

Converting Colors

Hex(2C120E)

Have a look what the booklet for
Hex(2C120E) contains.

Hex(2C120E)	3
<i>Conversions</i>	4
<i>Details</i>	6
<i>Harmonies</i>	11
<i>Previews</i>	23
<i>Color Blindness Simulation</i>	26
<i>CSS Examples</i>	29

Color

Hex(2C120E)

Conversions

Conversions Part 1

Format	Color
Hex	2C120E
RGB	44, 18, 14
RGB Percent	17%, 7%, 5%
CMY	0.8275, 0.9294, 0.9451
CMYK	0.00, 0.59, 0.68, 0.83
HSL	8°, 52%, 11%
HSV	8°, 68%, 17%
XYZ	1.3343, 0.9998, 0.5381
YIQ	25.3180, 16.7800, 4.2680

Conversions

Conversions Part 2

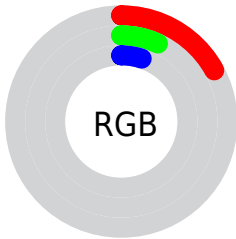
Format	Color
R_{YB}	44, 19, 14
Decimal	2888206
CIE Lab	8.99, 12.90, 7.80
CIE LCh	9, 15.078, 31.164
Yxy	0.9998, 0.4646, 0.3481
Android (android.graphics.Color)	4281078286 (0xFF2C120E)
YUV	25.3180, -5.5798, 16.3841
Hunter-Lab	9.9990, 6.3212, 3.8084

Details

The Hex color **2C120E** is a dark color, and the websafe version is hex **330000**. A complement of this color would be **0E282C**, and the grayscale version is **191919**.

A 20% lighter version of the original color is **5B3D39**, and **000000** is the 20% darker color. If you saturate the color by 10%, you get **2C0E0A**, and if you desaturate by 10%, it is **2C1612**.

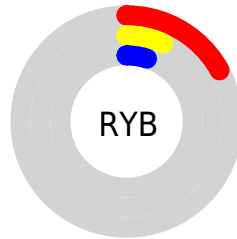
Distribution



Red (17%)

Green (7%)

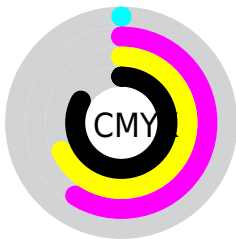
Blue (5%)



Red (17%)

Yellow (7%)

Blue (5%)

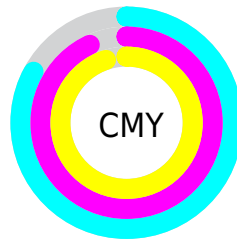


Cyan (0%)

Magenta (59%)

Yellow (68%)

Black (83%)



Cyan (83%)

Magenta (93%)

Yellow (95%)

Brightness & Saturation Gradients

These gradients show how the Hex color 2C120E changes by changing the brightness by 10 percent. The first figure shows a shift by +10% for each color and the second figure -10%.

Similar to the brightness gradients but the following saturation gradients show a change of the Hex color 2C120E by changing the saturation by 10% instead.

 2C120E

 2C120E

 FFF3ED

 140000

 5B3D39

 000000

 745450

 8F6C68

 A98681

 C5A09B

 E1BBB6

 FED7D1

 2C120E

 2C120E

■ 2C0E0A

■ 2C1612

■ 2C0A05

■ 2C1A17

■ 2C0701

■ 2C1D1B

■ 2C0600

■ 2C2120

■ 2C2524

■ 2C2928

■ 2C2D2D

■ 2C3131

■ 2C3436

Harmonies

Analogous

The Analogous color harmony consists of three colors that are next to each other on the color wheel.



2C1119



2C120E



281501

Triad

The Triadic color harmony groups three colors that are evenly spaced from another and form a triangle on the color wheel.



2C120E



061E0E



081A2E

Complementary

The Complementary color scheme is a pair of colors which are on the opposite of each other on the color wheel.



2C120E



0E282C

Split Complementary

Split-complementary colors differ from the complementary color scheme. The scheme consists of three colors, the original color and two neighbors of the complement color.



001D2B



2C120E



001F1A

Square

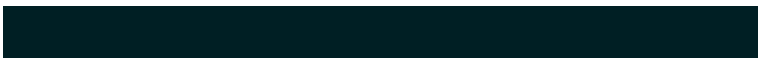
The Square scheme is like the rectangle color scheme, but the four colors are evenly spaced on the color wheel.



2C120E



161C01



001F24



1B172B

Rectangle

The Rectangle color scheme consists of four colors that form a rectangle on the color wheel.



2C120E



241800



001F24



011B2D

Sweetspot

The Sweet Spot groups the original color and five complimentary colors.



2C120E



382E2D



2C0E28



1C1615



9C9C9C



1C1C1C

Same Dimension

The Same Dimension uses a secret algorithm to generate beautiful new colors.



2C120E



38100A



2C210E



171515



570C00



D61D00

Inverse Universe

The Inverse Universe completely reimagines the original color for something new.



0E282C



0A3238



0E192C



151717



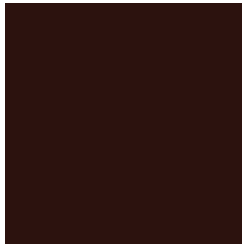
004B57



00BAD6

Previews

White Background



This preview shows how the Hex color 2C120E looks on a white background.

Color Contrast Check

Large Text (above 18pt) WCAG AA ✓ Pass

Any Text WCAG AA ✓ Pass

Large Text (above 18pt) WCAG AAA ✓ Pass

Any Text WCAG AAA ✓ Pass

Black Background



Color Contrast Check

Large Text (above 18pt) WCAG AA × Fail

Any Text WCAG AA × Fail

Large Text (above 18pt) WCAG AAA × Fail

Any Text WCAG AAA × Fail

If you want to check with other color combinations, try the [Color Contrast Checker](#).

Hex 2C120E Background



This preview shows how black text looks on a background with the Hex color 2C120E.



This preview shows how white text looks on a background with the Hex color 2C120E.

Color Blindness Simulation

Color vision deficiency is a very complex topic, and I could not describe the different causes any better than Wikipedia does, so if you want to learn more, you should check out their [article about color blindness](#).

Dichromacy

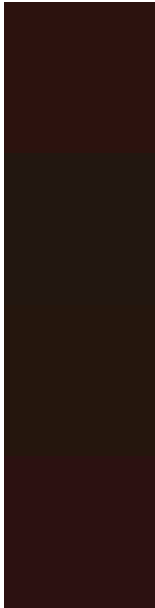


Original Color
2C120E

Protanopia
1D1A11

Deuteranopia
21190D

Trichromacy



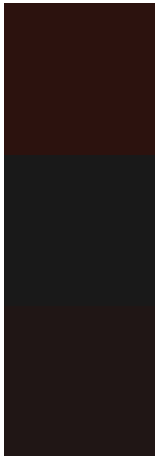
Original Color
2C120E

Protanomaly
221710

Deuteranomaly
25160D

Tritanomaly
2C1111

Monochromacy



Original Color
2C120E

Achromatopsia
191919

Achromatomaly
201615

CSS Examples

Text

The CSS property to change the color of the text to Hex 2C120E is called "color". The color property can be set on classes, ids or directly on the HTML element.

This example shows how text in the color #2C120E looks like.

```
.text, #text, p{  
    color:#2C120E  
}
```

If you want to add a text shadow in that color use the text-shadow property, you can generate a text shadow directly with our [CSS Text Shadow Generator](#).

Here you see how black text with a 4 pixel #2C120E colored shadow looks like.

```
.shadow{ text-shadow: 4px 4px 2px #2C120E
}
```

Border

The CSS property to change the border of an element to Hex 2C120E is called "border". The border property can be set on classes, ids or directly on the HTML element.

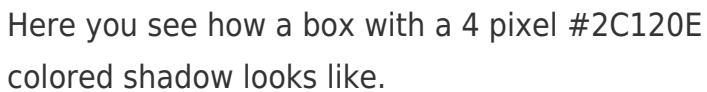
This example shows the color as border, it can be applied via the CSS property "border" or "border-color".

```
.border, #border, table{ border:4px solid
#2C120E }
```

If only the border color should be changed use the property `border-color`.

```
.border{ border-color:#2C120E }
```

If you want to add a box shadow in that color use:



Here you see how a box with a 4 pixel #2C120E colored shadow looks like.

```
.boxshadow{ -moz-box-shadow:4px 4px 4px  
4px #2C120E; -webkit-box-shadow:4px 4px  
4px 4px #2C120E; box-shadow:4px 4px 4px  
4px #2C120E }
```

Background

The CSS property to change the background color of an element to Hex 2C120E is called "background". The background property can be set on classes, ids or directly on the HTML element.

```
.background, #background, body{  
background:#2C120E }
```

If only the background color should be changed can be used:

```
.background{ background-color:#2C120E }
```

This example shows the color as background, it is applied via the CSS property "background".

To optimize and compress your CSS code, you can use our [online CSS compressor and optimizer](#) based on csstidy. If you want to create a linear or radial gradient as background or border, check our [CSS Gradient Generator](#).

Hey! You found this booklet interesting? Support Converting Colors with the new Membership Option!

The pro membership hides all ads, plus gives you double the colors in the color bucket, and more awesome pro features!

[Learn more, Memberships starting at \\$2.50/m!](#)

**Follow me
on Twitter!**

@ConvertingColor