

Converting Colors

Hex(2C1217)

Have a look what the booklet for
Hex(2C1217) contains.

Hex(2C1217)	3
<i>Conversions</i>	4
<i>Details</i>	6
<i>Harmonies</i>	11
<i>Previews</i>	23
<i>Color Blindness Simulation</i>	26
<i>CSS Examples</i>	29

Color

Hex(2C1217)

Conversions

Conversions Part 1

Format	Color
Hex	2C1217
RGB	44, 18, 23
RGB Percent	17%, 7%, 9%
CMY	0.8275, 0.9294, 0.9098
CMYK	0.00, 0.59, 0.48, 0.83
HSL	348°, 42%, 12%
HSV	348°, 59%, 17%
XYZ	1.4097, 1.0299, 0.9351
YIQ	26.3440, 13.8910, 7.0670

Conversions

Conversions Part 2

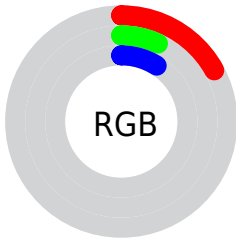
Format	Color
R_{YB}	44, 18, 23
Decimal	2888215
CIE Lab	9.24, 14.06, 2.55
CIE LCh	9, 14.290, 10.292
Yxy	1.0299, 0.4177, 0.3052
Android (android.graphics.Color)	4281078295 (0xFF2C1217)
YUV	26.3440, -1.6486, 15.4843
Hunter-Lab	10.1486, 7.0339, 1.6410

Details

The Hex color **2C1217** is a dark color, and the websafe version is hex **330000**. A complement of this color would be **122C27**, and the grayscale version is **1A1A1A**.

A 20% lighter version of the original color is **5B3D41**, and **000000** is the 20% darker color. If you saturate the color by 10%, you get **2C0E13**, and if you desaturate by 10%, it is **2C161B**.

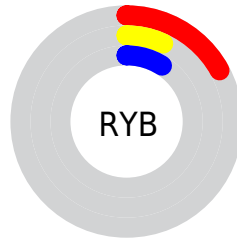
Distribution



Red (17%)

Green (7%)

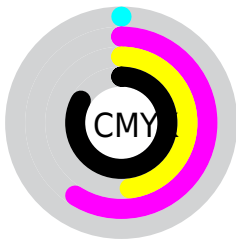
Blue (9%)



Red (17%)

Yellow (7%)

Blue (9%)

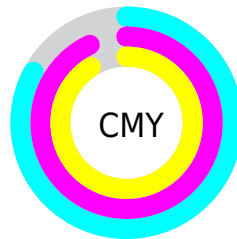


Cyan (0%)

Magenta (59%)

Yellow (48%)

Black (83%)



Cyan (83%)

Magenta (93%)

Yellow (91%)

Brightness & Saturation Gradients

These gradients show how the Hex color 2C1217 changes by changing the brightness by 10 percent. The first figure shows a shift by +10% for each color and the second figure -10%.

Similar to the brightness gradients but the following saturation gradients show a change of the Hex color 2C1217 by changing the saturation by 10% instead.

 2C1217

 2C1217

 FFF3F8

 170000

 5B3D41

 000000

 745459

 8E6D71

 A9868B

 C4A0A5

 E0BBC0

 FDD7DC

 2C1217

 2C1217

■ 2C0E13

■ 2C161B

■ 2C0910

■ 2C1B1E

■ 2C050C

■ 2C1F22

■ 2C0009

■ 2C2425

■ 2C0008

■ 2C2829

■ 2C2C2C

■ 2C3130

■ 2C3533

■ 2C3A37

Harmonies

Analogous

The Analogous color harmony consists of three colors that are next to each other on the color wheel.



281321



2C1217



2B140C

Triad

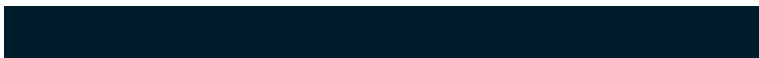
The Triadic color harmony groups three colors that are evenly spaced from another and form a triangle on the color wheel.



2C1217



131D07



001D2C

Complementary

The Complementary color scheme is a pair of colors which are on the opposite of each other on the color wheel.



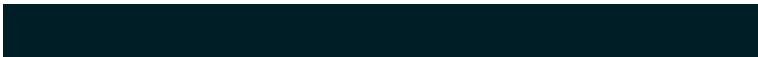
2C1217



122C27

Split Complementary

Split-complementary colors differ from the complementary color scheme. The scheme consists of three colors, the original color and two neighbors of the complement color.



001E26



2C1217



041F13

Square

The Square scheme is like the rectangle color scheme, but the four colors are evenly spaced on the color wheel.



2C1217



1E1A00



001F1D



101A2D

Rectangle

The Rectangle color scheme consists of four colors that form a rectangle on the color wheel.



2C1217



281604



001F1D



001D2A

Sweetspot

The Sweet Spot groups the original color and five complimentary colors.



2C1217



382E30



27122C



1C1617



9C9C9C



1C1C1C

Same Dimension

The Same Dimension uses a secret algorithm to generate beautiful new colors.



2C1217



381018



2C1A12



171515



570011



D60029

Inverse Universe

The Inverse Universe completely reimagines the original color for something new.



2C1217



381018



12242C



171515



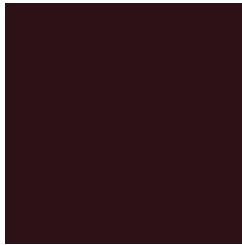
570011



D60029

Previews

White Background



This preview shows how the Hex color 2C1217 looks on a white background.

Color Contrast Check

Large Text (above 18pt) WCAG AA ✓ Pass

Any Text WCAG AA ✓ Pass

Large Text (above 18pt) WCAG AAA ✓ Pass

Any Text WCAG AAA ✓ Pass

Black Background



Color Contrast Check

Large Text (above 18pt) WCAG AA × Fail

Any Text WCAG AA × Fail

Large Text (above 18pt) WCAG AAA × Fail

Any Text WCAG AAA × Fail

If you want to check with other color combinations, try the [Color Contrast Checker](#).

Hex 2C1217 Background



This preview shows how black text looks on a background with the Hex color 2C1217.

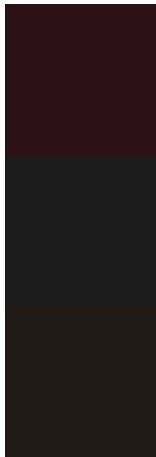


This preview shows how white text looks on a background with the Hex color 2C1217.

Color Blindness Simulation

Color vision deficiency is a very complex topic, and I could not describe the different causes any better than Wikipedia does, so if you want to learn more, you should check out their [article about color blindness](#).

Dichromacy



Original Color
2C1217

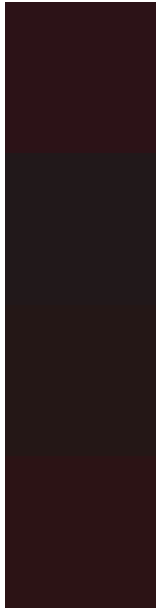
Protanopia
1B1B1C

Deuteranopia
1F1A16



Tritanopia
2C1314

Trichromacy



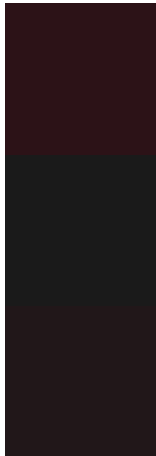
Original Color
2C1217

Protanomaly
21181A

Deuteranomaly
241716

Tritanomaly
2C1315

Monochromacy



Original Color
2C1217

Achromatopsia
1A1A1A

Achromatomaly
211719

CSS Examples

Text

The CSS property to change the color of the text to Hex 2C1217 is called "color". The color property can be set on classes, ids or directly on the HTML element.

This example shows how text in the color #2C1217 looks like.

```
.text, #text, p{  
    color:#2C1217  
}
```

If you want to add a text shadow in that color use the text-shadow property, you can generate a text shadow directly with our [CSS Text Shadow Generator](#).

Here you see how black text with a 4 pixel #2C1217 colored shadow looks like.

```
.shadow{ text-shadow: 4px 4px 2px #2C1217
}
```

Border

The CSS property to change the border of an element to Hex 2C1217 is called "border". The border property can be set on classes, ids or directly on the HTML element.

This example shows the color as border, it can be applied via the CSS property "border" or "border-color".

```
.border, #border, table{ border:4px solid
#2C1217 }
```

If only the border color should be changed use the property `border-color`.

```
.border{ border-color:#2C1217 }
```

If you want to add a box shadow in that color use:

Here you see how a box with a 4 pixel #2C1217 colored shadow looks like.

```
.boxshadow{ -moz-box-shadow:4px 4px 4px  
4px #2C1217; -webkit-box-shadow:4px 4px  
4px 4px #2C1217; box-shadow:4px 4px 4px  
4px #2C1217 }
```

Background

The CSS property to change the background color of an element to Hex 2C1217 is called "background". The background property can be set on classes, ids or directly on the HTML element.

```
.background, #background, body{  
background:#2C1217 }
```

If only the background color should be changed can be used:

```
.background{ background-color:#2C1217 }
```

This example shows the color as background, it is applied via the CSS property "background".

To optimize and compress your CSS code, you can use our [online CSS compressor and optimizer](#) based on csstidy. If you want to create a linear or radial gradient as background or border, check our [CSS Gradient Generator](#).

Hey! You found this booklet interesting? Support Converting Colors with the new Membership Option!

The pro membership hides all ads, plus gives you double the colors in the color bucket, and more awesome pro features!

[Learn more, Memberships starting at \\$2.50/m!](#)

**Follow me
on Twitter!**

@ConvertingColor