

Converting Colors

Hex(2C1302)

Have a look what the booklet for
Hex(2C1302) contains.

Hex(2C1302)	3
<i>Conversions</i>	4
<i>Details</i>	6
<i>Harmonies</i>	11
<i>Previews</i>	23
<i>Color Blindness Simulation</i>	26
<i>CSS Examples</i>	29

Color

Hex(2C1302)

Conversions

Conversions Part 1

Format	Color
Hex	2C1302
RGB	44, 19, 2
RGB Percent	17%, 7%, 1%
CMY	0.8275, 0.9255, 0.9922
CMYK	0.00, 0.57, 0.95, 0.83
HSL	24°, 91%, 9%
HSV	24°, 95%, 17%
XYZ	1.2825, 1.0056, 0.1839
YIQ	24.5370, 20.3570, 0.0130

Conversions

Conversions Part 2

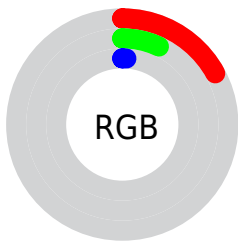
Format	Color
RYB	44, 31, 2
Decimal	2888450
CIELab	9.04, 11.11, 12.95
CIElCh	9, 17.067, 49.367
Yxy	1.0056, 0.5188, 0.4068
Android (android.graphics.Color)	4281078530 (0xFF2C1302)
YUV	24.5370, -11.1107, 17.0691
Hunter-Lab	10.0280, 5.2805, 5.9321

Details

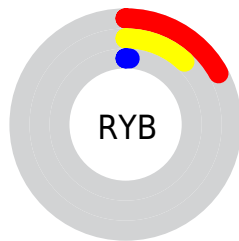
The Hex color **2C1302** is a dark color, and the websafe version is hex **330000**. A complement of this color would be **021B2C**, and the grayscale version is **191919**.

A 20% lighter version of the original color is **5B3E31**, and **000000** is the 20% darker color. If you saturate the color by 10%, you get **2C1200**, and if you desaturate by 10%, it is **2C1606**.

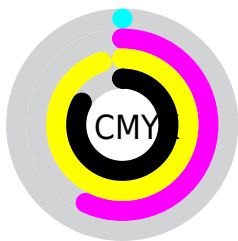
Distribution



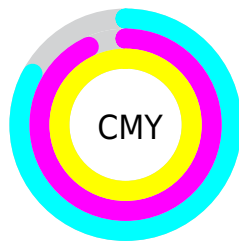
- Red (17%)
- Green (7%)
- Blue (1%)



- Red (17%)
- Yellow (12%)
- Blue (1%)



- Cyan (0%)
- Magenta (57%)
- Yellow (95%)
- Black (83%)



- Cyan (83%)
- Magenta (93%)
- Yellow (99%)

Brightness & Saturation Gradients

These gradients show how the Hex color 2C1302 changes by changing the brightness by 10 percent. The first figure shows a shift by +10% for each color and the second figure -10%.

Similar to the brightness gradients but the following saturation gradients show a change of the Hex color 2C1302 by changing the saturation by 10% instead.

 2C1302

 2C1302

 FFF4E4

 110000

 5B3E31

 000000

 745547

 8F6D5F

 AA8778

 C5A192

 E2BCAC

 FED8C8

 2C1302

 2C1302

■ 2C1200

■ 2C1606

■ 2C180B

■ 2C1B0F

■ 2C1D14

■ 2C2018

■ 2C231C

■ 2C2521

■ 2C2825

■ 2C2B2A

Harmonies

Analogous

The Analogous color harmony consists of three colors that are next to each other on the color wheel.



2F1012



2C1302



251700

Triad

The Triadic color harmony groups three colors that are evenly spaced from another and form a triangle on the color wheel.



2C1302



001F15



13182F

Complementary

The Complementary color scheme is a pair of colors which are on the opposite of each other on the color wheel.



2C1302



021B2C

Split Complementary

Split-complementary colors differ from the complementary color scheme. The scheme consists of three colors, the original color and two neighbors of the complement color.



001C30



2C1302



002021

Square

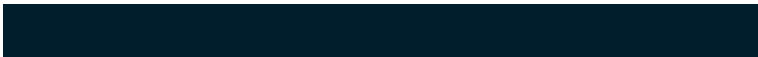
The Square scheme is like the rectangle color scheme, but the four colors are evenly spaced on the color wheel.



2C1302



0C1E05



001E2B



231429

Rectangle

The Rectangle color scheme consists of four colors that form a rectangle on the color wheel.



2C1302



1E1A00



001E2B



0B1A30

Sweetspot

The Sweet Spot groups the original color and five complimentary colors.



2C1302



382E28



2C021B



1C1612



9C9C9C



1C1C1C

Same Dimension

The Same Dimension uses a secret algorithm to generate beautiful new colors.



2C1302



381700



2C2802



171615



572300



D65700

Inverse Universe

The Inverse Universe completely reimagines the original color for something new.



021B2C



002138



02062C



151617



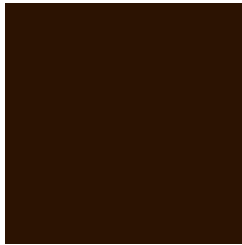
003457



0080D6

Previews

White Background



This preview shows how the Hex color 2C1302 looks on a white background.

Color Contrast Check

Large Text (above 18pt) WCAG AA ✓ Pass

Any Text WCAG AA ✓ Pass

Large Text (above 18pt) WCAG AAA ✓ Pass

Any Text WCAG AAA ✓ Pass

Black Background



Color Contrast Check

Large Text (above 18pt) WCAG AA × Fail

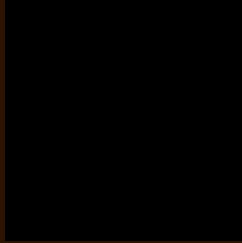
Any Text WCAG AA × Fail

Large Text (above 18pt) WCAG AAA × Fail

Any Text WCAG AAA × Fail

If you want to check with other color combinations, try the [Color Contrast Checker](#).

Hex 2C1302 Background



This preview shows how black text looks on a background with the Hex color 2C1302.

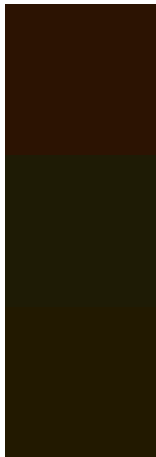


This preview shows how white text looks on a background with the Hex color 2C1302.

Color Blindness Simulation

Color vision deficiency is a very complex topic, and I could not describe the different causes any better than Wikipedia does, so if you want to learn more, you should check out their [article about color blindness](#).

Dichromacy



Original Color
2C1302

Protanopia
1E1B05

Deuteranopia
221900

Trichromacy



Original Color
2C1302

Protanomaly
231804

Deuteranomaly
261701

Tritanomaly
2C120D

Monochromacy



Original Color
2C1302

Achromatopsia
191919

Achromatomaly
201711

CSS Examples

Text

The CSS property to change the color of the text to Hex 2C1302 is called "color". The color property can be set on classes, ids or directly on the HTML element.

This example shows how text in the color #2C1302 looks like.

```
.text, #text, p{  
    color:#2C1302  
}
```

If you want to add a text shadow in that color use the text-shadow property, you can generate a text shadow directly with our [CSS Text Shadow Generator](#).

Here you see how black text with a 4 pixel #2C1302 colored shadow looks like.

```
.shadow{ text-shadow: 4px 4px 2px #2C1302
}
```

Border

The CSS property to change the border of an element to Hex 2C1302 is called "border". The border property can be set on classes, ids or directly on the HTML element.

This example shows the color as border, it can be applied via the CSS property "border" or "border-color".

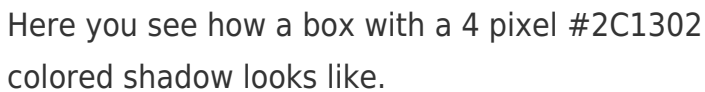
```
.border, #border, table{ border:4px solid
#2C1302 }
```

If only the border color should be changed use the property `border-color`.

```
.border{ border-color:#2C1302 }
```

If you want to add a box shadow in that color use:

Here you see how a box with a 4 pixel #2C1302 colored shadow looks like.



```
.boxshadow{ -moz-box-shadow:4px 4px 4px  
4px #2C1302; -webkit-box-shadow:4px 4px  
4px 4px #2C1302; box-shadow:4px 4px 4px  
4px #2C1302 }
```

Background

The CSS property to change the background color of an element to Hex 2C1302 is called "background". The background property can be set on classes, ids or directly on the HTML element.

```
.background, #background, body{  
background:#2C1302 }
```

If only the background color should be changed can be used:

```
.background{ background-color:#2C1302 }
```

This example shows the color as background, it is applied via the CSS property "background".

To optimize and compress your CSS code, you can use our [online CSS compressor and optimizer](#) based on csstidy. If you want to create a linear or radial gradient as background or border, check our [CSS Gradient Generator](#).

Hey! You found this booklet interesting? Support Converting Colors with the new Membership Option!

The pro membership hides all ads, plus gives you double the colors in the color bucket, and more awesome pro features!

[Learn more, Memberships starting at \\$2.50/m!](#)

**Follow me
on Twitter!**

@ConvertingColor