

Converting Colors

Hex(2C131D)

Have a look what the booklet for
Hex(2C131D) contains.

Hex(2C131D)	3
<i>Conversions</i>	4
<i>Details</i>	6
<i>Harmonies</i>	11
<i>Previews</i>	23
<i>Color Blindness Simulation</i>	26
<i>CSS Examples</i>	29

Color

Hex(2C131D)

Conversions

Conversions Part 1

Format	Color
Hex	2C131D
RGB	44, 19, 29
RGB Percent	17%, 7%, 11%
CMY	0.8275, 0.9255, 0.8863
CMYK	0.00, 0.57, 0.34, 0.83
HSL	336°, 40%, 12%
HSV	336°, 57%, 17%
XYZ	1.4933, 1.0899, 1.2941
YIQ	27.6150, 11.6900, 8.4100

Conversions

Conversions Part 2

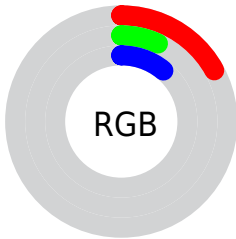
Format	Color
RYB	44, 19, 29
Decimal	2888477
CIELab	9.72, 14.37, -1.30
CIELCh	10, 14.431, 354.838
Yxy	1.0899, 0.3851, 0.2811
Android (android.graphics.Color)	4281078557 (0xFF2C131D)
YUV	27.6150, 0.6828, 14.3696
Hunter-Lab	10.4400, 7.2630, -0.0412

Details

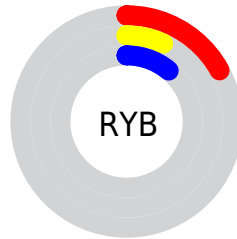
The Hex color **2C131D** is a dark color, and the websafe version is hex **330000**. A complement of this color would be **132C22**, and the grayscale version is **1C1C1C**.

A 20% lighter version of the original color is **5B3E48**, and **000000** is the 20% darker color. If you saturate the color by 10%, you get **2C0F1A**, and if you desaturate by 10%, it is **2C1720**.

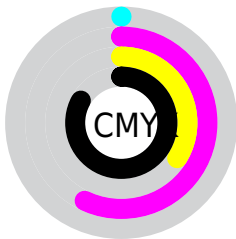
Distribution



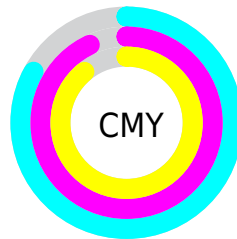
- Red (17%)
- Green (7%)
- Blue (11%)



- Red (17%)
- Yellow (7%)
- Blue (11%)



- Cyan (0%)
- Magenta (57%)
- Yellow (34%)
- Black (83%)



- Cyan (83%)
- Magenta (93%)
- Yellow (89%)

Brightness & Saturation Gradients

These gradients show how the Hex color 2C131D changes by changing the brightness by 10 percent. The first figure shows a shift by +10% for each color and the second figure -10%.

Similar to the brightness gradients but the following saturation gradients show a change of the Hex color 2C131D by changing the saturation by 10% instead.

 2C131D

 2C131D

 FFF5FF

 1A0003

 5B3E48

 000000

 745560

 8D6E79

 A88793

 C3A2AD

 E0BDC8

 FCD8E4

 2C131D

 2C131D

■ 2C0F1A

■ 2C1720

■ 2C0A18

■ 2C1C22

■ 2C0615

■ 2C2025

■ 2C0112

■ 2C2528

■ 2C0012

■ 2C292A

■ 2C2D2D

■ 2C322F

■ 2C3632

■ 2C3B35

Harmonies

Analogous

The Analogous color harmony consists of three colors that are next to each other on the color wheel.



251526



2C131D



2D1313

Triad

The Triadic color harmony groups three colors that are evenly spaced from another and form a triangle on the color wheel.



2C131D



1A1D03



001F2B

Complementary

The Complementary color scheme is a pair of colors which are on the opposite of each other on the color wheel.



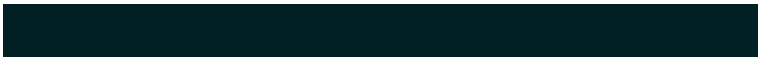
2C131D



132C22

Split Complementary

Split-complementary colors differ from the complementary color scheme. The scheme consists of three colors, the original color and two neighbors of the complement color.



002023



2C131D



0D1F0E

Square

The Square scheme is like the rectangle color scheme, but the four colors are evenly spaced on the color wheel.



2C131D



231A00



002019



061C2E

Rectangle

The Rectangle color scheme consists of four colors that form a rectangle on the color wheel.



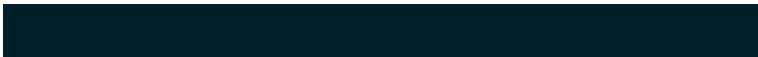
2C131D



2C150B



002019



001F28

Sweetspot

The Sweet Spot groups the original color and five complimentary colors.



2C131D



382F32



22132C



1C1619



9C9C9C



1C1C1C

Same Dimension

The Same Dimension uses a secret algorithm to generate beautiful new colors.



2C131D



381221



2C1513



171516



570023



D60056

Inverse Universe

The Inverse Universe completely reimagines the original color for something new.



2C131D



381221



13292C



171516



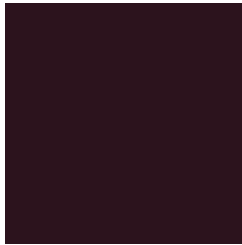
570023



D60056

Previews

White Background



This preview shows how the Hex color 2C131D looks on a white background.

Color Contrast Check

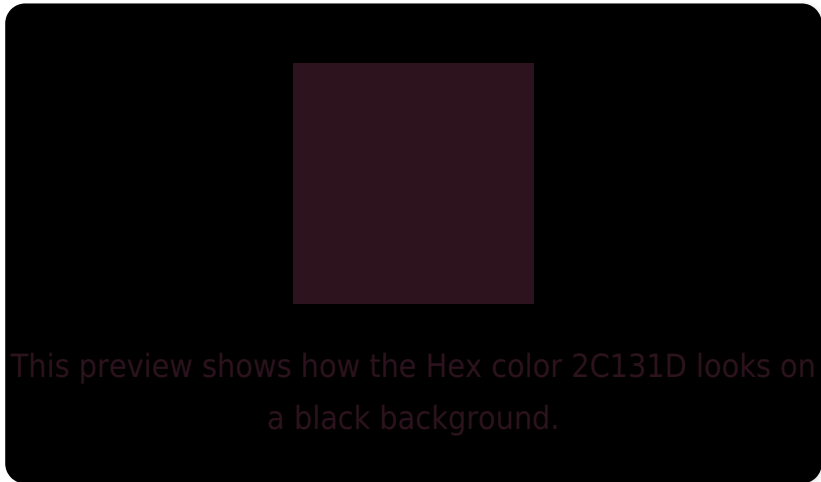
Large Text (above 18pt) WCAG AA ✓ Pass

Any Text WCAG AA ✓ Pass

Large Text (above 18pt) WCAG AAA ✓ Pass

Any Text WCAG AAA ✓ Pass

Black Background



Color Contrast Check

Large Text (above 18pt) WCAG AA × Fail

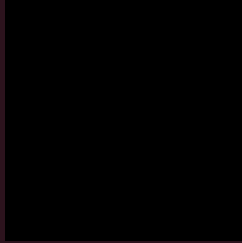
Any Text WCAG AA × Fail

Large Text (above 18pt) WCAG AAA × Fail

Any Text WCAG AAA × Fail

If you want to check with other color combinations, try the [Color Contrast Checker](#).

Hex 2C131D Background



This preview shows how black text looks on a background with the Hex color 2C131D.



This preview shows how white text looks on a background with the Hex color 2C131D.

Color Blindness Simulation

Color vision deficiency is a very complex topic, and I could not describe the different causes any better than Wikipedia does, so if you want to learn more, you should check out their [article about color blindness](#).

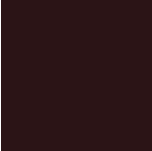
Dichromacy



Original Color
2C131D

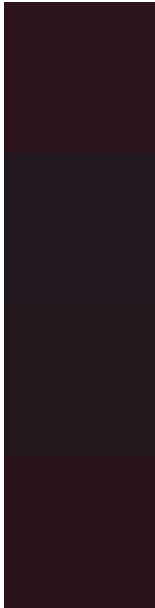
Protanopia
1A1B22

Deuteranopia
1E1B1C



Tritanopia
2B1416

Trichromacy



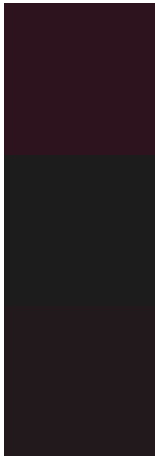
Original Color
2C131D

Protanomaly
211820

Deuteranomaly
23181C

Tritanomaly
2B1419

Monochromacy



Original Color
2C131D

Achromatopsia
1C1C1C

Achromatomaly
22191C

CSS Examples

Text

The CSS property to change the color of the text to Hex 2C131D is called "color". The color property can be set on classes, ids or directly on the HTML element.

This example shows how text in the color #2C131D looks like.

```
.text, #text, p{  
    color:#2C131D  
}
```

If you want to add a text shadow in that color use the text-shadow property, you can generate a text shadow directly with our [CSS Text Shadow Generator](#).

Here you see how black text with a 4 pixel #2C131D colored shadow looks like.

```
.shadow{ text-shadow: 4px 4px 2px #2C131D
}
```

Border

The CSS property to change the border of an element to Hex 2C131D is called "border". The border property can be set on classes, ids or directly on the HTML element.

This example shows the color as border, it can be applied via the CSS property "border" or "border-color".

```
.border, #border, table{ border:4px solid
#2C131D }
```

If only the border color should be changed use the property `border-color`.

```
.border{ border-color:#2C131D }
```

If you want to add a box shadow in that color use:

Here you see how a box with a 4 pixel #2C131D colored shadow looks like.

```
.boxshadow{ -moz-box-shadow:4px 4px 4px  
4px #2C131D; -webkit-box-shadow:4px 4px  
4px 4px #2C131D; box-shadow:4px 4px 4px  
4px #2C131D }
```

Background

The CSS property to change the background color of an element to Hex 2C131D is called "background". The background property can be set on classes, ids or directly on the HTML element.

```
.background, #background, body{  
background:#2C131D }
```

If only the background color should be changed can be used:

```
.background{ background-color:#2C131D }
```

This example shows the color as background, it is applied via the CSS property "background".

To optimize and compress your CSS code, you can use our [online CSS compressor and optimizer](#) based on csstidy. If you want to create a linear or radial gradient as background or border, check our [CSS Gradient Generator](#).

Hey! You found this booklet interesting? Support Converting Colors with the new Membership Option!

The pro membership hides all ads, plus gives you double the colors in the color bucket, and more awesome pro features!

[Learn more, Memberships starting at \\$2.50/m!](#)

**Follow me
on Twitter!**

@ConvertingColor