

Converting Colors

Hex(2C140B)

Have a look what the booklet for
Hex(2C140B) contains.

Hex(2C140B)	3
<i>Conversions</i>	4
<i>Details</i>	6
<i>Harmonies</i>	11
<i>Previews</i>	23
<i>Color Blindness Simulation</i>	26
<i>CSS Examples</i>	29

Color

Hex(2C140B)

Conversions

Conversions Part 1

Format	Color
Hex	2C140B
RGB	44, 20, 11
RGB Percent	17%, 8%, 4%
CMY	0.8275, 0.9216, 0.9569
CMYK	0.00, 0.55, 0.75, 0.83
HSL	16°, 60%, 11%
HSV	16°, 75%, 17%
XYZ	1.3493, 1.0599, 0.4501
YIQ	26.1500, 17.1930, 2.2890

Conversions

Conversions Part 2

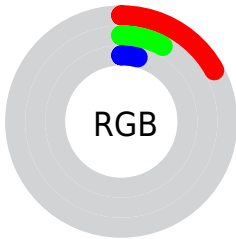
Format	Color
RYB	44, 23, 11
Decimal	2888715
CIELab	9.48, 11.23, 9.91
CIElCh	9, 14.979, 41.415
Yxy	1.0599, 0.4719, 0.3707
Android (android.graphics.Color)	4281078795 (0xFF2C140B)
YUV	26.1500, -7.4689, 15.6545
Hunter-Lab	10.2954, 5.3765, 4.6148

Details

The Hex color **2C140B** is a dark color, and the websafe version is hex **330000**. A complement of this color would be **0B232C**, and the grayscale version is **1A1A1A**.

A 20% lighter version of the original color is **5B3F37**, and **000000** is the 20% darker color. If you saturate the color by 10%, you get **2C1107**, and if you desaturate by 10%, it is **2C170F**.

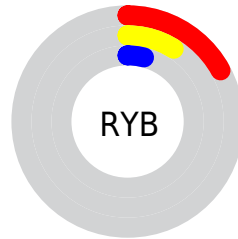
Distribution



Red (17%)

Green (8%)

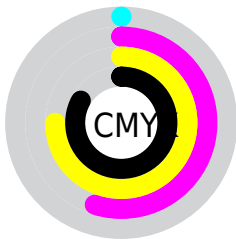
Blue (4%)



Red (17%)

Yellow (9%)

Blue (4%)

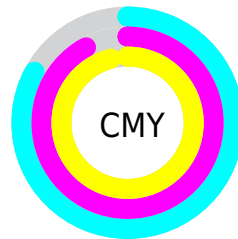


Cyan (0%)

Magenta (55%)

Yellow (75%)

Black (83%)



Cyan (83%)

Magenta (92%)

Yellow (96%)

Brightness & Saturation Gradients

These gradients show how the Hex color 2C140B changes by changing the brightness by 10 percent. The first figure shows a shift by +10% for each color and the second figure -10%.

Similar to the brightness gradients but the following saturation gradients show a change of the Hex color 2C140B by changing the saturation by 10% instead.

 2C140B

 2C140B

 FFF6EB

 140000

 5B3F37

 000000

 74564D

 8E6E65

 A9887E

 C5A298

 E1BDB3

 FED9CF

 2C140B

 2C140B

■ 2C1107

■ 2C170F

■ 2C0E02

■ 2C1A14

■ 2C0C00

■ 2C1E18

■ 2C211D

■ 2C2421

■ 2C2725

■ 2C2A2A

■ 2C2E2E

■ 2C3133

Harmonies

Analogous

The Analogous color harmony consists of three colors that are next to each other on the color wheel.



2D1217



2C140B



271800

Triad

The Triadic color harmony groups three colors that are evenly spaced from another and form a triangle on the color wheel.



2C140B



031F14



111A2E

Complementary

The Complementary color scheme is a pair of colors which are on the opposite of each other on the color wheel.



2C140B



0B232C

Split Complementary

Split-complementary colors differ from the complementary color scheme. The scheme consists of three colors, the original color and two neighbors of the complement color.



001D2D



2C140B



00201E

Square

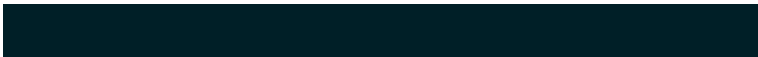
The Square scheme is like the rectangle color scheme, but the four colors are evenly spaced on the color wheel.



2C140B



131E07



001F27



20162A

Rectangle

The Rectangle color scheme consists of four colors that form a rectangle on the color wheel.



2C140B



211A00



001F27



091B2E

Sweetspot

The Sweet Spot groups the original color and five complimentary colors.



2C140B



382F2B



2C0B23



1C1614



9C9C9C



1C1C1C

Same Dimension

The Same Dimension uses a secret algorithm to generate beautiful new colors.



2C140B



381306



2C240B



171515



571800



D63A00

Inverse Universe

The Inverse Universe completely reimagines the original color for something new.



0B232C



062A38



0B132C



151617



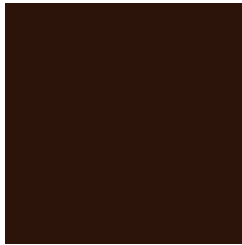
003F57



009CD6

Previews

White Background



This preview shows how the Hex color 2C140B looks on a white background.

Color Contrast Check

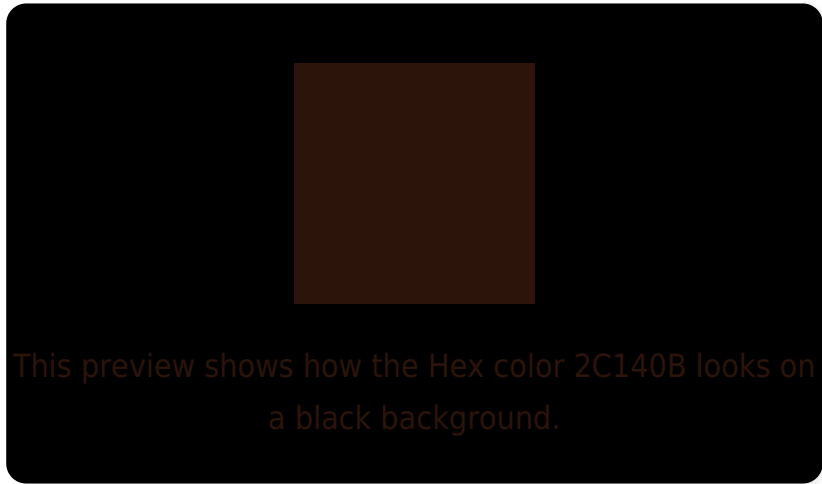
Large Text (above 18pt) WCAG AA ✓ Pass

Any Text WCAG AA ✓ Pass

Large Text (above 18pt) WCAG AAA ✓ Pass

Any Text WCAG AAA ✓ Pass

Black Background



Color Contrast Check

Large Text (above 18pt) WCAG AA × Fail

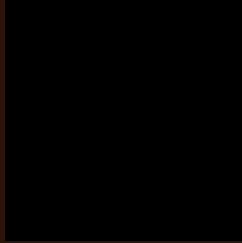
Any Text WCAG AA × Fail

Large Text (above 18pt) WCAG AAA × Fail

Any Text WCAG AAA × Fail

If you want to check with other color combinations, try the [Color Contrast Checker](#).

Hex 2C140B Background



This preview shows how black text looks on a background with the Hex color 2C140B.



This preview shows how white text looks on a background with the Hex color 2C140B.

Color Blindness Simulation

Color vision deficiency is a very complex topic, and I could not describe the different causes any better than Wikipedia does, so if you want to learn more, you should check out their [article about color blindness](#).

Dichromacy

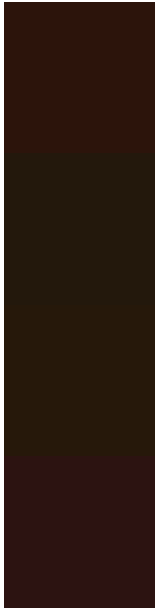


Original Color
2C140B

Protanopia
1E1B0D

Deuteranopia
221A09

Trichromacy



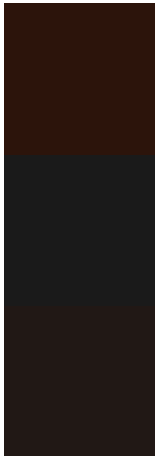
Original Color
2C140B

Protanomaly
23180C

Deuteranomaly
26180A

Tritanomaly
2C1311

Monochromacy



Original Color
2C140B

Achromatopsia
1A1A1A

Achromatomaly
211815

CSS Examples

Text

The CSS property to change the color of the text to Hex 2C140B is called "color". The color property can be set on classes, ids or directly on the HTML element.

This example shows how text in the color #2C140B looks like.

```
.text, #text, p{  
    color:#2C140B  
}
```

If you want to add a text shadow in that color use the text-shadow property, you can generate a text shadow directly with our [CSS Text Shadow Generator](#).

Here you see how black text with a 4 pixel #2C140B colored shadow looks like.

```
.shadow{ text-shadow: 4px 4px 2px #2C140B
}
```

Border

The CSS property to change the border of an element to Hex 2C140B is called "border". The border property can be set on classes, ids or directly on the HTML element.

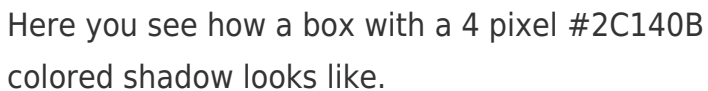
This example shows the color as border, it can be applied via the CSS property "border" or "border-color".

```
.border, #border, table{ border:4px solid
#2C140B }
```

If only the border color should be changed use the property `border-color`.

```
.border{ border-color:#2C140B }
```

If you want to add a box shadow in that color use:



Here you see how a box with a 4 pixel #2C140B colored shadow looks like.

```
.boxshadow{ -moz-box-shadow:4px 4px 4px  
4px #2C140B; -webkit-box-shadow:4px 4px  
4px 4px #2C140B; box-shadow:4px 4px 4px  
4px #2C140B }
```

Background

The CSS property to change the background color of an element to Hex 2C140B is called "background". The background property can be set on classes, ids or directly on the HTML element.

```
.background, #background, body{  
background:#2C140B }
```

If only the background color should be changed can be used:

```
.background{ background-color:#2C140B }
```

This example shows the color as background, it is applied via the CSS property "background".

To optimize and compress your CSS code, you can use our [online CSS compressor and optimizer](#) based on csstidy. If you want to create a linear or radial gradient as background or border, check our [CSS Gradient Generator](#).

Hey! You found this booklet interesting? Support Converting Colors with the new Membership Option!

The pro membership hides all ads, plus gives you double the colors in the color bucket, and more awesome pro features!

[Learn more, Memberships starting at \\$2.50/m!](#)

**Follow me
on Twitter!**

@ConvertingColor