

Converting Colors

Hex(2D1516)

Have a look what the booklet for
Hex(2D1516) contains.

Hex(2D1516)	3
<i>Conversions</i>	4
<i>Details</i>	6
<i>Harmonies</i>	11
<i>Previews</i>	23
<i>Color Blindness Simulation</i>	26
<i>CSS Examples</i>	29

Color

Hex(2D1516)

Conversions

Conversions Part 1

Format	Color
Hex	2D1516
RGB	45, 21, 22
RGB Percent	18%, 8%, 9%
CMY	0.8235, 0.9176, 0.9137
CMYK	0.00, 0.53, 0.51, 0.82
HSL	358°, 36%, 13%
HSV	358°, 53%, 18%
XYZ	1.4952, 1.1521, 0.9026
YIQ	28.2900, 13.9830, 5.3990

Conversions

Conversions Part 2

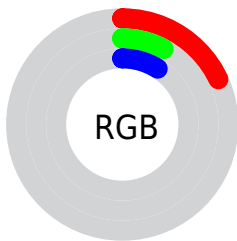
Format	Color
R_{YB}	45, 21, 22
Decimal	2954518
CIE _{Lab}	10.20, 12.35, 4.67
CIE _{LCh}	10, 13.207, 20.728
Yxy	1.1521, 0.4212, 0.3246
Android (android.graphics.Color)	4281144598 (0xFF2D1516)
YUV	28.2900, -3.1010, 14.6547
Hunter-Lab	10.7338, 6.0801, 2.5278

Details


The Hex color **2D1516** is a dark color, and the websafe version is hex **330000**. A complement of this color would be **152D2C**, and the grayscale version is **1C1C1C**.

A 20% lighter version of the original color is **5C4040**, and **000000** is the 20% darker color. If you saturate the color by 10%, you get **2D1112**, and if you desaturate by 10%, it is **2D1A1A**.

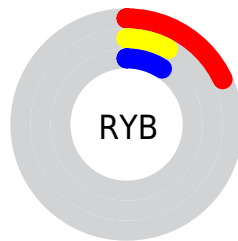
Distribution



 Red (18%)

 Green (8%)

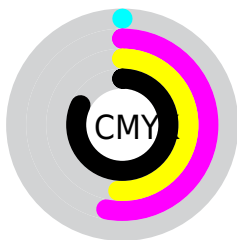
 Blue (9%)




 Red (18%)

 Yellow (8%)

 Blue (9%)

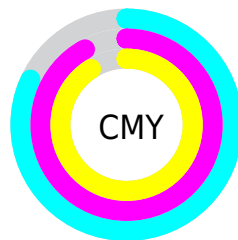


 Cyan (0%)

 Magenta (53%)

 Yellow (51%)

 Black (82%)



 Cyan (82%)

 Magenta (92%)

 Yellow (91%)

Brightness & Saturation Gradients

These gradients show how the Hex color 2D1516 changes by changing the brightness by 10 percent. The first figure shows a shift by +10% for each color and the second figure -10%.

Similar to the brightness gradients but the following saturation gradients show a change of the Hex color 2D1516 by changing the saturation by 10% instead.

 2D1516

 2D1516

 FFF7F7

 1A0000

 5C4040

 000000

 755758

 8F7070

 AA8989

 C5A4A4

 E2BFBF

 FEDBDA

 2D1516

 2D1516

■ 2D1112

■ 2D1A1A

■ 2D0C0D

■ 2D1E1F

■ 2D0709

■ 2D2323

■ 2D0305

■ 2D2727

■ 2D0002

■ 2D2C2C

■ 2D3030

■ 2D3534

■ 2D3939

■ 2D3E3D

Harmonies

Analogous

The Analogous color harmony consists of three colors that are next to each other on the color wheel.



2B151F



2D1516



2B170C

Triad

The Triadic color harmony groups three colors that are evenly spaced from another and form a triangle on the color wheel.



2D1516



111F0F



081E2D

Complementary

The Complementary color scheme is a pair of colors which are on the opposite of each other on the color wheel.



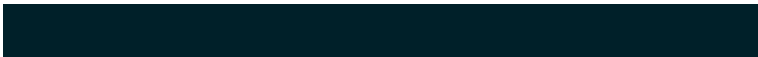
2D1516



152D2C

Split Complementary

Split-complementary colors differ from the complementary color scheme. The scheme consists of three colors, the original color and two neighbors of the complement color.



002029



2D1516



042019

Square

The Square scheme is like the rectangle color scheme, but the four colors are evenly spaced on the color wheel.



2D1516



1C1D07



002122



191B2D

Rectangle

The Rectangle color scheme consists of four colors that form a rectangle on the color wheel.



2D1516



271907



002122



031E2D

Sweetspot

The Sweet Spot groups the original color and five complimentary colors.



2D1516



3B3132



2C152D



1F1919



9E9E9E



1F1F1F

Same Dimension

The Same Dimension uses a secret algorithm to generate beautiful new colors.



2D1516



3B1517



2D2015



171515



570004



D60009

Inverse Universe

The Inverse Universe completely reimagines the original color for something new.



2D1516



3B1517



15222D



171515



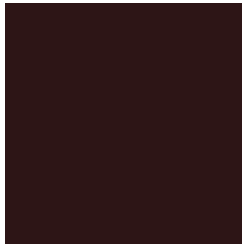
570004



D60009

Previews

White Background



This preview shows how the Hex color 2D1516 looks on a white background.

Color Contrast Check

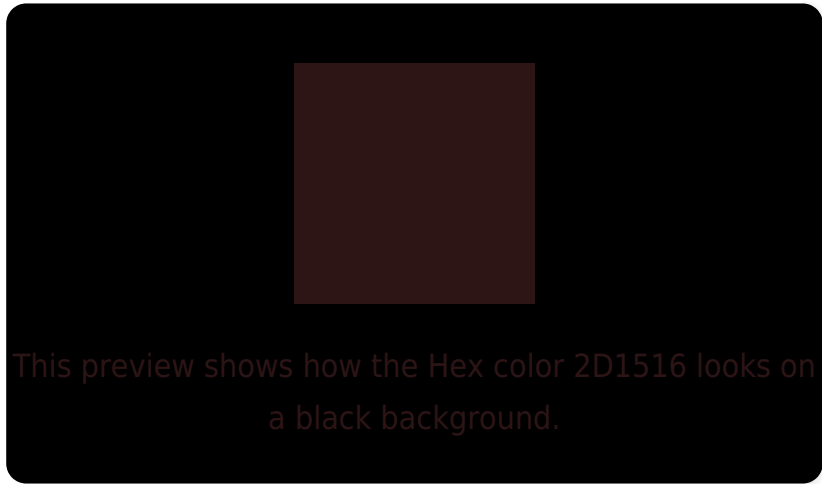
Large Text (above 18pt) WCAG AA ✓ Pass

Any Text WCAG AA ✓ Pass

Large Text (above 18pt) WCAG AAA ✓ Pass

Any Text WCAG AAA ✓ Pass

Black Background



Color Contrast Check

Large Text (above 18pt) WCAG AA × Fail

Any Text WCAG AA × Fail

Large Text (above 18pt) WCAG AAA × Fail

Any Text WCAG AAA × Fail

If you want to check with other color combinations, try the [Color Contrast Checker](#).

Hex 2D1516 Background



This preview shows how black text looks on a background with the Hex color 2D1516.

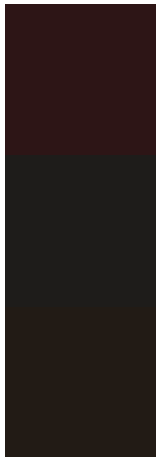


This preview shows how white text looks on a background with the Hex color 2D1516.

Color Blindness Simulation

Color vision deficiency is a very complex topic, and I could not describe the different causes any better than Wikipedia does, so if you want to learn more, you should check out their [article about color blindness](#).

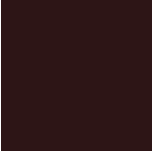
Dichromacy



Original Color
2D1516

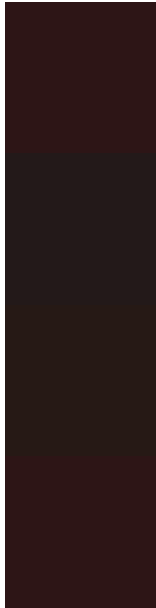
Protanopia
1E1C1A

Deuteranopia
221B15



Tritanopia
2D1516

Trichromacy



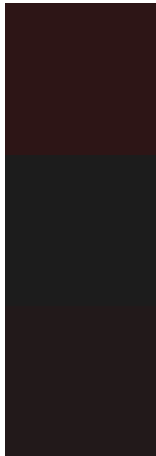
Original Color
2D1516

Protanomaly
231919

Deuteranomaly
261915

Tritanomaly
2D1516

Monochromacy



Original Color
2D1516

Achromatopsia
1C1C1C

Achromatomaly
22191A

CSS Examples

Text

The CSS property to change the color of the text to Hex 2D1516 is called "color". The color property can be set on classes, ids or directly on the HTML element.

This example shows how text in the color #2D1516 looks like.

```
.text, #text, p{  
    color:#2D1516  
}
```

If you want to add a text shadow in that color use the text-shadow property, you can generate a text shadow directly with our [CSS Text Shadow Generator](#).

Here you see how black text with a 4 pixel #2D1516 colored shadow looks like.

```
.shadow{ text-shadow: 4px 4px 2px #2D1516
}
```

Border

The CSS property to change the border of an element to Hex 2D1516 is called "border". The border property can be set on classes, ids or directly on the HTML element.

This example shows the color as border, it can be applied via the CSS property "border" or "border-color".

```
.border, #border, table{ border:4px solid
#2D1516 }
```

If only the border color should be changed use the property `border-color`.

```
.border{ border-color:#2D1516 }
```

If you want to add a box shadow in that color use:

Here you see how a box with a 4 pixel #2D1516 colored shadow looks like.

```
.boxshadow{ -moz-box-shadow:4px 4px 4px  
4px #2D1516; -webkit-box-shadow:4px 4px  
4px 4px #2D1516; box-shadow:4px 4px 4px  
4px #2D1516 }
```

Background

The CSS property to change the background color of an element to Hex 2D1516 is called "background". The background property can be set on classes, ids or directly on the HTML element.

```
.background, #background, body{  
background:#2D1516 }
```

If only the background color should be changed can be used:

```
.background{ background-color:#2D1516 }
```

This example shows the color as background, it is applied via the CSS property "background".

To optimize and compress your CSS code, you can use our [online CSS compressor and optimizer](#) based on csstidy. If you want to create a linear or radial gradient as background or border, check our [CSS Gradient Generator](#).

Hey! You found this booklet interesting? Support Converting Colors with the new Membership Option!

The pro membership hides all ads, plus gives you double the colors in the color bucket, and more awesome pro features!

[Learn more, Memberships starting at \\$2.50/m!](#)

**Follow me
on Twitter!**

@ConvertingColor