

Converting Colors

Hex(2D1606)

Have a look what the booklet for
Hex(2D1606) contains.

Hex(2D1606)	3
<i>Conversions</i>	4
<i>Details</i>	6
<i>Harmonies</i>	11
<i>Previews</i>	23
<i>Color Blindness Simulation</i>	26
<i>CSS Examples</i>	29

Color

Hex(2D1606)

Conversions

Conversions Part 1

Format	Color
Hex	2D1606
RGB	45, 22, 6
RGB Percent	18%, 9%, 2%
CMY	0.8235, 0.9137, 0.9765
CMYK	0.00, 0.51, 0.87, 0.82
HSL	25°, 76%, 10%
HSV	25°, 87%, 18%
XYZ	1.4020, 1.1449, 0.3194
YIQ	27.0530, 18.8440, -0.1000

Conversions

Conversions Part 2

Format	Color
RYB	45, 33, 6
Decimal	2954758
CIELab	10.14, 9.93, 12.92
CIELCh	10, 16.298, 52.453
Yxy	1.1449, 0.4891, 0.3994
Android (android.graphics.Color)	4281144838 (0xFF2D1606)
YUV	27.0530, -10.3791, 15.7395
Hunter-Lab	10.6998, 4.6638, 5.7201

Details

The Hex color **2D1606** is a dark color, and the websafe version is hex **330000**. A complement of this color would be **061D2D**, and the grayscale version is **1B1B1B**.

A 20% lighter version of the original color is **5C4133**, and **000000** is the 20% darker color. If you saturate the color by 10%, you get **2D1301**, and if you desaturate by 10%, it is **2D190A**.

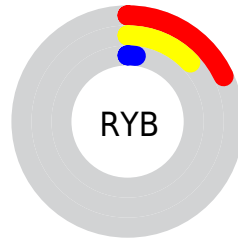
Distribution



Red (18%)

Green (9%)

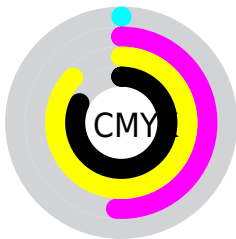
Blue (2%)



Red (18%)

Yellow (13%)

Blue (2%)

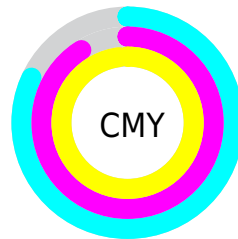


Cyan (0%)

Magenta (51%)

Yellow (87%)

Black (82%)



Cyan (82%)

Magenta (91%)

Yellow (98%)

Brightness & Saturation Gradients

These gradients show how the Hex color 2D1606 changes by changing the brightness by 10 percent. The first figure shows a shift by +10% for each color and the second figure -10%.

Similar to the brightness gradients but the following saturation gradients show a change of the Hex color 2D1606 by changing the saturation by 10% instead.

 2D1606

 2D1606

 FFF8E7

 160000

 5C4133

 000000

 76584A

 907162

 AB8A7B

 C6A595

 E3C0AF

 FFDCCB

 2D1606

 2D1606

■ 2D1301

■ 2D190A

■ 2D1200

■ 2D1B0F

■ 2D1E13

■ 2D2118

■ 2D231D

■ 2D2621

■ 2D2926

■ 2D2B2A

■ 2D2E2F

Harmonies

Analogous

The Analogous color harmony consists of three colors that are next to each other on the color wheel.



301314



2D1606



261A00

Triad

The Triadic color harmony groups three colors that are evenly spaced from another and form a triangle on the color wheel.



2D1606



002119



181A30

Complementary

The Complementary color scheme is a pair of colors which are on the opposite of each other on the color wheel.



2D1606



061D2D

Split Complementary

Split-complementary colors differ from the complementary color scheme. The scheme consists of three colors, the original color and two neighbors of the complement color.



001E31



2D1606



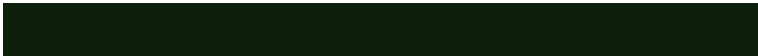
002124

Square

The Square scheme is like the rectangle color scheme, but the four colors are evenly spaced on the color wheel.



2D1606



0D200C



00202D



271629

Rectangle

The Rectangle color scheme consists of four colors that form a rectangle on the color wheel.



2D1606



1F1C00



00202D



111B31

Sweetspot

The Sweet Spot groups the original color and five complimentary colors.



2D1606



3B322B



2D061D



1F1915



9E9E9E



1F1F1F

Same Dimension

The Same Dimension uses a secret algorithm to generate beautiful new colors.



2D1606



3B1800



2D2906



171615



572400



D65800

Inverse Universe

The Inverse Universe completely reimagines the original color for something new.



061D2D



00233B



060A2D



151617



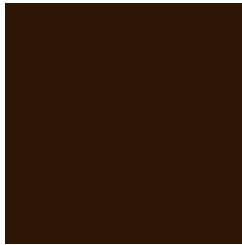
003357



007ED6

Previews

White Background



This preview shows how the Hex color 2D1606 looks on a white background.

Color Contrast Check

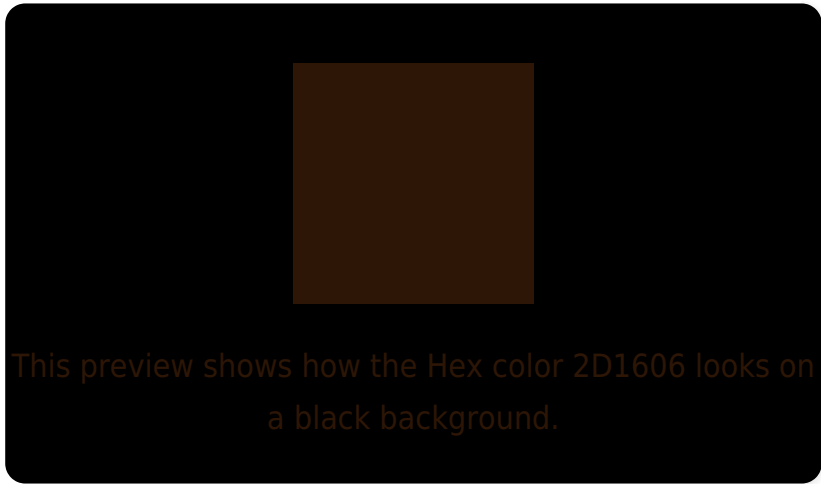
Large Text (above 18pt) WCAG AA ✓ Pass

Any Text WCAG AA ✓ Pass

Large Text (above 18pt) WCAG AAA ✓ Pass

Any Text WCAG AAA ✓ Pass

Black Background



Color Contrast Check

Large Text (above 18pt) WCAG AA × Fail

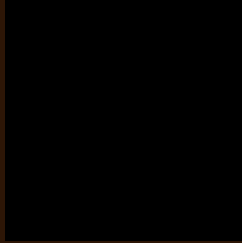
Any Text WCAG AA × Fail

Large Text (above 18pt) WCAG AAA × Fail

Any Text WCAG AAA × Fail

If you want to check with other color combinations, try the [Color Contrast Checker](#).

Hex 2D1606 Background



This preview shows how black text looks on a background with the Hex color 2D1606.

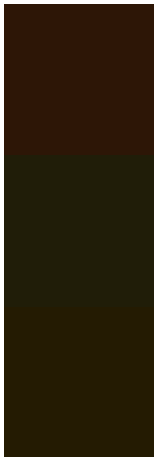


This preview shows how white text looks on a background with the Hex color 2D1606.

Color Blindness Simulation

Color vision deficiency is a very complex topic, and I could not describe the different causes any better than Wikipedia does, so if you want to learn more, you should check out their [article about color blindness](#).

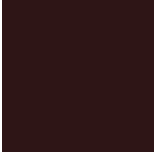
Dichromacy



Original Color
2D1606

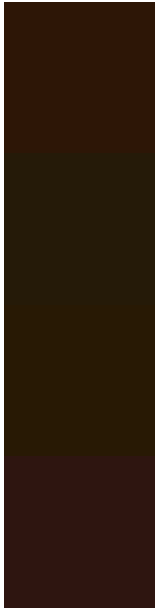
Protanopia
201D08

Deuteranopia
241B02



Tritanopia
2E1516

Trichromacy



Original Color
2D1606

Protanomaly
251A07

Deuteranomaly
271903

Tritanomaly
2E1510

Monochromacy



Original Color
2D1606

Achromatopsia
1B1B1B

Achromatomaly
221913

CSS Examples

Text

The CSS property to change the color of the text to Hex 2D1606 is called "color". The color property can be set on classes, ids or directly on the HTML element.

This example shows how text in the color #2D1606 looks like.

```
.text, #text, p{  
    color:#2D1606  
}
```

If you want to add a text shadow in that color use the text-shadow property, you can generate a text shadow directly with our [CSS Text Shadow Generator](#).

Here you see how black text with a 4 pixel #2D1606 colored shadow looks like.

```
.shadow{ text-shadow: 4px 4px 2px #2D1606
}
```

Border

The CSS property to change the border of an element to Hex 2D1606 is called "border". The border property can be set on classes, ids or directly on the HTML element.

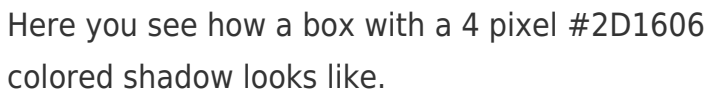
This example shows the color as border, it can be applied via the CSS property "border" or "border-color".

```
.border, #border, table{ border:4px solid
#2D1606 }
```

If only the border color should be changed use the property `border-color`.

```
.border{ border-color:#2D1606 }
```

If you want to add a box shadow in that color use:



Here you see how a box with a 4 pixel #2D1606 colored shadow looks like.

```
.boxshadow{ -moz-box-shadow:4px 4px 4px  
4px #2D1606; -webkit-box-shadow:4px 4px  
4px 4px #2D1606; box-shadow:4px 4px 4px  
4px #2D1606 }
```

Background

The CSS property to change the background color of an element to Hex 2D1606 is called "background". The background property can be set on classes, ids or directly on the HTML element.

```
.background, #background, body{  
background:#2D1606 }
```

If only the background color should be changed can be used:

```
.background{ background-color:#2D1606 }
```

This example shows the color as background, it is applied via the CSS property "background".

To optimize and compress your CSS code, you can use our [online CSS compressor and optimizer](#) based on csstidy. If you want to create a linear or radial gradient as background or border, check our [CSS Gradient Generator](#).

Hey! You found this booklet interesting? Support Converting Colors with the new Membership Option!

The pro membership hides all ads, plus gives you double the colors in the color bucket, and more awesome pro features!

[Learn more, Memberships starting at \\$2.50/m!](#)

**Follow me
on Twitter!**

@ConvertingColor