

Converting Colors

Hex(2D170E)

Have a look what the booklet for
Hex(2D170E) contains.

Hex(2D170E)	3
<i>Conversions</i>	4
<i>Details</i>	6
<i>Harmonies</i>	11
<i>Previews</i>	23
<i>Color Blindness Simulation</i>	26
<i>CSS Examples</i>	29

Color

Hex(2D170E)

Conversions

Conversions Part 1

Format	Color
Hex	2D170E
RGB	45, 23, 14
RGB Percent	18%, 9%, 5%
CMY	0.8235, 0.9098, 0.9451
CMYK	0.00, 0.49, 0.69, 0.82
HSL	17°, 53%, 12%
HSV	17°, 69%, 18%
XYZ	1.4678, 1.2024, 0.5702
YIQ	28.5520, 16.0010, 1.8650

Conversions

Conversions Part 2

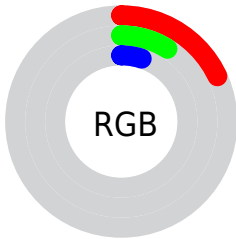
Format	Color
RYB	45, 27, 14
Decimal	2955022
CIELab	10.57, 9.97, 10.08
CIELCh	11, 14.173, 45.316
Yxy	1.2024, 0.4530, 0.3711
Android (android.graphics.Color)	4281145102 (0xFF2D170E)
YUV	28.5520, -7.1741, 14.4249
Hunter-Lab	10.9653, 4.7051, 4.5927

Details

The Hex color **2D170E** is a dark color, and the websafe version is hex **330000**. A complement of this color would be **0E242D**, and the grayscale version is **1D1D1D**.

A 20% lighter version of the original color is **5C4239**, and **000000** is the 20% darker color. If you saturate the color by 10%, you get **2D140A**, and if you desaturate by 10%, it is **2D1A13**.

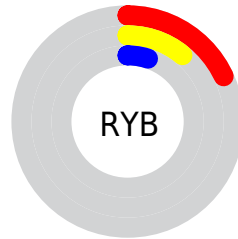
Distribution



Red (18%)

Green (9%)

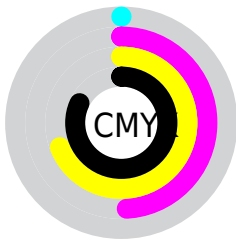
Blue (5%)



Red (18%)

Yellow (11%)

Blue (5%)

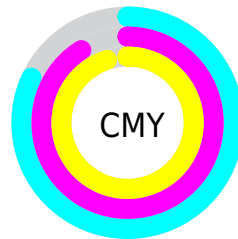


Cyan (0%)

Magenta (49%)

Yellow (69%)

Black (82%)



Cyan (82%)

Magenta (91%)

Yellow (95%)

Brightness & Saturation Gradients

These gradients show how the Hex color 2D170E changes by changing the brightness by 10 percent. The first figure shows a shift by +10% for each color and the second figure -10%.

Similar to the brightness gradients but the following saturation gradients show a change of the Hex color 2D170E by changing the saturation by 10% instead.

 2D170E

 2D170E

 FFFAEE

 180000

 5C4239

 000000

 755950

 8F7268

 AA8B81

 C6A69B

 E2C1B6

 FFDDD1

 2D170E

 2D170E

■ 2D140A

■ 2D1A13

■ 2D1105

■ 2D1D17

■ 2D0D01

■ 2D211C

■ 2D0D00

■ 2D2420

■ 2D2725

■ 2D2A29

■ 2D2D2E

■ 2D3132

■ 2D3437

Harmonies

Analogous

The Analogous color harmony consists of three colors that are next to each other on the color wheel.



2F1518



2D170E



271A05

Triad

The Triadic color harmony groups three colors that are evenly spaced from another and form a triangle on the color wheel.



2D170E



052117



161C2F

Complementary

The Complementary color scheme is a pair of colors which are on the opposite of each other on the color wheel.



2D170E



0E242D

Split Complementary

Split-complementary colors differ from the complementary color scheme. The scheme consists of three colors, the original color and two neighbors of the complement color.



031F2F



2D170E



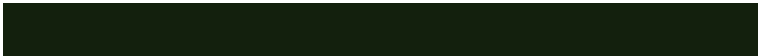
002221

Square

The Square scheme is like the rectangle color scheme, but the four colors are evenly spaced on the color wheel.



2D170E



13200D



00212A



24182A

Rectangle

The Rectangle color scheme consists of four colors that form a rectangle on the color wheel.



2D170E



221D04



00212A



101D30

Sweetspot

The Sweet Spot groups the original color and five complimentary colors.



2D170E



3B322E



2D0E24



1F1917



9E9E9E



1F1F1F

Same Dimension

The Same Dimension uses a secret algorithm to generate beautiful new colors.



2D170E



3B180A



2D260E



171515



571900



D63E00

Inverse Universe

The Inverse Universe completely reimagines the original color for something new.



0E242D



0A2D3B



0E152D



151617



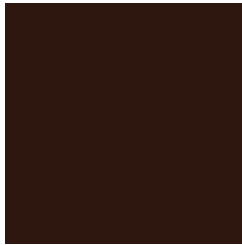
003E57



0098D6

Previews

White Background



This preview shows how the Hex color 2D170E looks on a white background.

Color Contrast Check

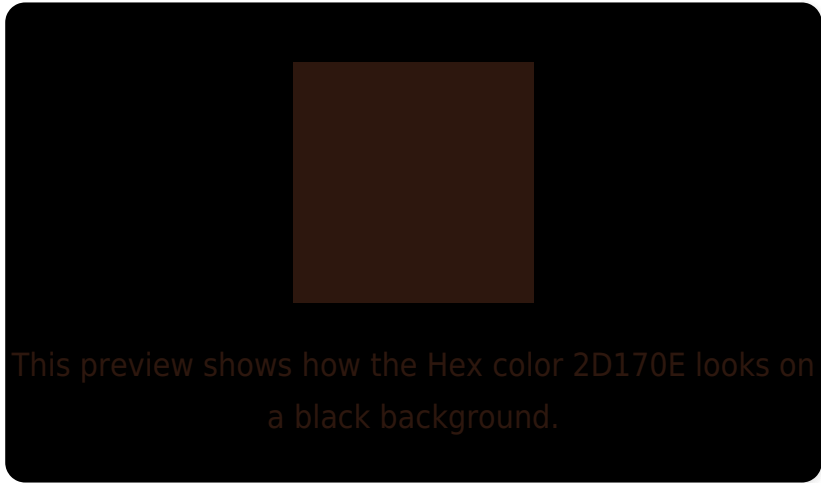
Large Text (above 18pt) WCAG AA ✓ Pass

Any Text WCAG AA ✓ Pass

Large Text (above 18pt) WCAG AAA ✓ Pass

Any Text WCAG AAA ✓ Pass

Black Background



Color Contrast Check

Large Text (above 18pt) WCAG AA × Fail

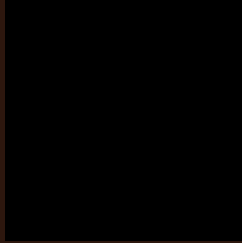
Any Text WCAG AA × Fail

Large Text (above 18pt) WCAG AAA × Fail

Any Text WCAG AAA × Fail

If you want to check with other color combinations, try the [Color Contrast Checker](#).

Hex 2D170E Background



This preview shows how black text looks on a background with the Hex color 2D170E.



This preview shows how white text looks on a background with the Hex color 2D170E.

Color Blindness Simulation

Color vision deficiency is a very complex topic, and I could not describe the different causes any better than Wikipedia does, so if you want to learn more, you should check out their [article about color blindness](#).

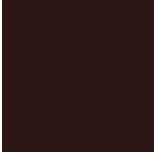
Dichromacy



Original Color
2D170E

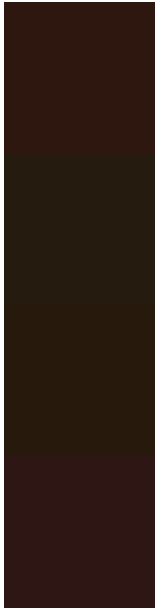
Protanopia
201D10

Deuteranopia
241C0D



Tritanopia
2E1617

Trichromacy



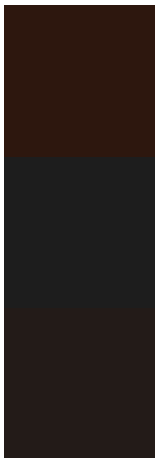
Original Color
2D170E

Protanomaly
251B0F

Deuteranomaly
271A0D

Tritanomaly
2E1614

Monochromacy



Original Color
2D170E

Achromatopsia
1D1D1D

Achromatomaly
231B18

CSS Examples

Text

The CSS property to change the color of the text to Hex 2D170E is called "color". The color property can be set on classes, ids or directly on the HTML element.

This example shows how text in the color #2D170E looks like.

```
.text, #text, p{  
    color:#2D170E  
}
```

If you want to add a text shadow in that color use the text-shadow property, you can generate a text shadow directly with our [CSS Text Shadow Generator](#).

Here you see how black text with a 4 pixel #2D170E colored shadow looks like.

```
.shadow{ text-shadow: 4px 4px 2px #2D170E
}
```

Border

The CSS property to change the border of an element to Hex 2D170E is called "border". The border property can be set on classes, ids or directly on the HTML element.

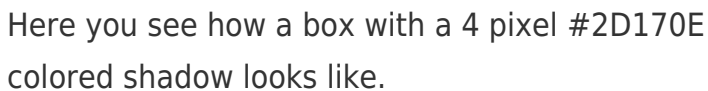
This example shows the color as border, it can be applied via the CSS property "border" or "border-color".

```
.border, #border, table{ border:4px solid
#2D170E }
```

If only the border color should be changed use the property `border-color`.

```
.border{ border-color:#2D170E }
```

If you want to add a box shadow in that color use:



Here you see how a box with a 4 pixel #2D170E colored shadow looks like.

```
.boxshadow{ -moz-box-shadow:4px 4px 4px  
4px #2D170E; -webkit-box-shadow:4px 4px  
4px 4px #2D170E; box-shadow:4px 4px 4px  
4px #2D170E }
```

Background

The CSS property to change the background color of an element to Hex 2D170E is called "background". The background property can be set on classes, ids or directly on the HTML element.

```
.background, #background, body{  
background:#2D170E }
```

If only the background color should be changed can be used:

```
.background{ background-color:#2D170E }
```

This example shows the color as background, it is applied via the CSS property "background".

To optimize and compress your CSS code, you can use our [online CSS compressor and optimizer](#) based on csstidy. If you want to create a linear or radial gradient as background or border, check our [CSS Gradient Generator](#).

Hey! You found this booklet interesting? Support Converting Colors with the new Membership Option!

The pro membership hides all ads, plus gives you double the colors in the color bucket, and more awesome pro features!

[Learn more, Memberships starting at \\$2.50/m!](#)

**Follow me
on Twitter!**

@ConvertingColor