

Converting Colors

Hex(2D1719)

Have a look what the booklet for
Hex(2D1719) contains.

Hex(2D1719)	3
<i>Conversions</i>	4
<i>Details</i>	6
<i>Harmonies</i>	11
<i>Previews</i>	23
<i>Color Blindness Simulation</i>	26
<i>CSS Examples</i>	29

Color

Hex(2D1719)

Conversions

Conversions Part 1

Format	Color
Hex	2D1719
RGB	45, 23, 25
RGB Percent	18%, 9%, 10%
CMY	0.8235, 0.9098, 0.9020
CMYK	0.00, 0.49, 0.44, 0.82
HSL	355°, 32%, 13%
HSV	355°, 49%, 18%
XYZ	1.5641, 1.2409, 1.0768
YIQ	29.8060, 12.4700, 5.2860

Conversions

Conversions Part 2

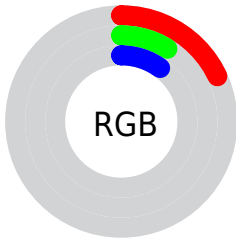
Format	Color
RYB	45, 23, 25
Decimal	2955033
CIELab	10.86, 11.42, 3.37
CIElCh	11, 11.908, 16.457
Yxy	1.2409, 0.4029, 0.3197
Android (android.graphics.Color)	4281145113 (0xFF2D1719)
YUV	29.8060, -2.3694, 13.3251
Hunter-Lab	11.1394, 5.5686, 2.0664

Details

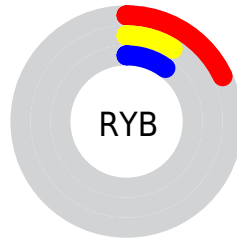
The Hex color **2D1719** is a dark color, and the websafe version is hex **333333**. A complement of this color would be **172D2B**, and the grayscale version is **1E1E1E**.

A 20% lighter version of the original color is **5C4244**, and **000000** is the 20% darker color. If you saturate the color by 10%, you get **2D1315**, and if you desaturate by 10%, it is **2D1B1D**.

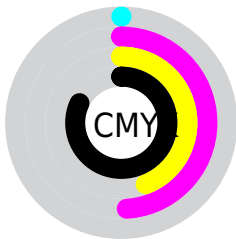
Distribution



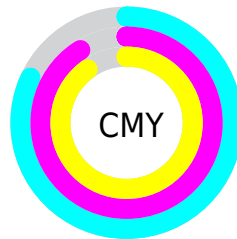
- Red (18%)
- Green (9%)
- Blue (10%)



- Red (18%)
- Yellow (9%)
- Blue (10%)



- Cyan (0%)
- Magenta (49%)
- Yellow (44%)
- Black (82%)



- Cyan (82%)
- Magenta (91%)
- Yellow (90%)

Brightness & Saturation Gradients

These gradients show how the Hex color 2D1719 changes by changing the brightness by 10 percent. The first figure shows a shift by +10% for each color and the second figure -10%.

Similar to the brightness gradients but the following saturation gradients show a change of the Hex color 2D1719 by changing the saturation by 10% instead.

 2D1719

 2D1719

 FFFAFB

 1A0000

 5C4244

 000000

 755A5B

 8F7274

 A98C8D

 C5A6A8

 E1C1C3

 FEDDDF

 2D1719

 2D1719

■ 2D1315

■ 2D1B1D

■ 2D0E11

■ 2D2021

■ 2D0A0D

■ 2D2525

■ 2D0509

■ 2D2929

■ 2D0105

■ 2D2E2D

■ 2D0004

■ 2D3232

■ 2D3736

■ 2D3B3A

■ 2D403E

Harmonies

Analogous

The Analogous color harmony consists of three colors that are next to each other on the color wheel.



2B1721



2D1719



2B1911

Triad

The Triadic color harmony groups three colors that are evenly spaced from another and form a triangle on the color wheel.



2D1719



152011



0B1F2D

Complementary

The Complementary color scheme is a pair of colors which are on the opposite of each other on the color wheel.



2D1719



172D2B

Split Complementary

Split-complementary colors differ from the complementary color scheme. The scheme consists of three colors, the original color and two neighbors of the complement color.



012129



2D1719



0B2119

Square

The Square scheme is like the rectangle color scheme, but the four colors are evenly spaced on the color wheel.



2D1719



1F1E0B



022221



191C2D

Rectangle

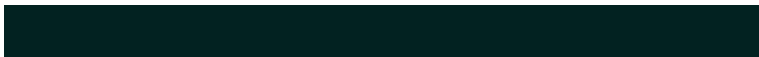
The Rectangle color scheme consists of four colors that form a rectangle on the color wheel.



2D1719



281A0D



022221



06202C

Sweetspot

The Sweet Spot groups the original color and five complimentary colors.



2D1719



3B3233



2B172D



1F191A



9E9E9E



1F1F1F

Same Dimension

The Same Dimension uses a secret algorithm to generate beautiful new colors.



2D1719



3B181B



2D2017



171515



570008



D60013

Inverse Universe

The Inverse Universe completely reimagines the original color for something new.



2D1719



3B181B



17242D



171515



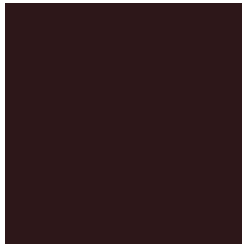
570008



D60013

Previews

White Background



This preview shows how the Hex color 2D1719 looks on a white background.

Color Contrast Check

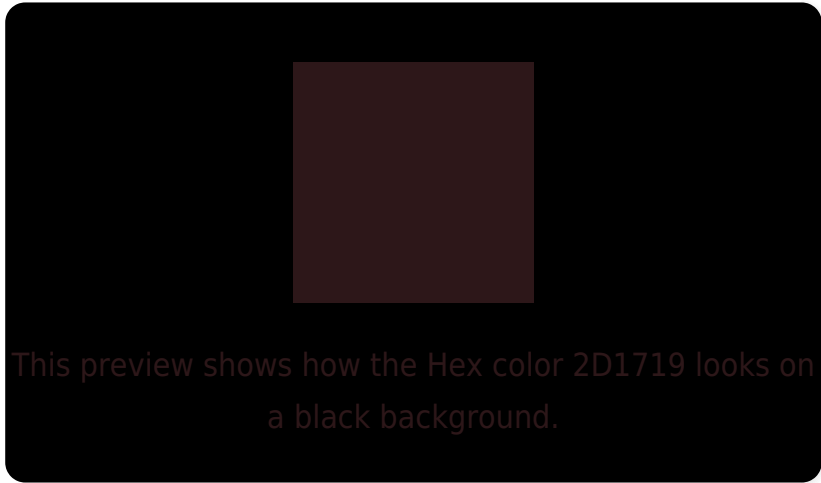
Large Text (above 18pt) WCAG AA ✓ Pass

Any Text WCAG AA ✓ Pass

Large Text (above 18pt) WCAG AAA ✓ Pass

Any Text WCAG AAA ✓ Pass

Black Background



Color Contrast Check

Large Text (above 18pt) WCAG AA × Fail

Any Text WCAG AA × Fail

Large Text (above 18pt) WCAG AAA × Fail

Any Text WCAG AAA × Fail

If you want to check with other color combinations, try the [Color Contrast Checker](#).

Hex 2D1719 Background



This preview shows how black text looks on a background with the Hex color 2D1719.

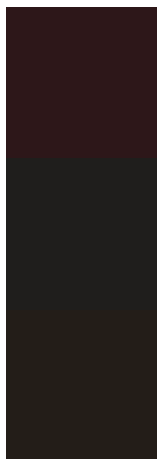


This preview shows how white text looks on a background with the Hex color 2D1719.

Color Blindness Simulation

Color vision deficiency is a very complex topic, and I could not describe the different causes any better than Wikipedia does, so if you want to learn more, you should check out their [article about color blindness](#).

Dichromacy

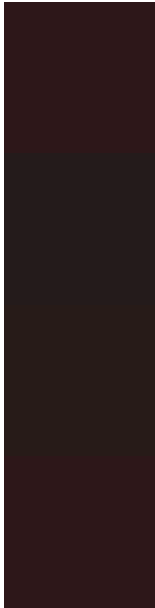


Original Color
2D1719

Protanopia
1F1E1C

Deuteranopia
231D18

Trichromacy



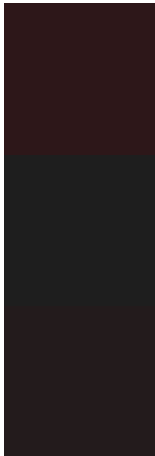
Original Color
2D1719

Protanomaly
241B1B

Deuteranomaly
271B18

Tritanomaly
2D1719

Monochromacy



Original Color
2D1719

Achromatopsia
1E1E1E

Achromatomaly
231B1C

CSS Examples

Text

The CSS property to change the color of the text to Hex 2D1719 is called "color". The color property can be set on classes, ids or directly on the HTML element.

This example shows how text in the color #2D1719 looks like.

```
.text, #text, p{  
    color:#2D1719  
}
```

If you want to add a text shadow in that color use the text-shadow property, you can generate a text shadow directly with our [CSS Text Shadow Generator](#).

Here you see how black text with a 4 pixel #2D1719 colored shadow looks like.

```
.shadow{ text-shadow: 4px 4px 2px #2D1719
}
```

Border

The CSS property to change the border of an element to Hex 2D1719 is called "border". The border property can be set on classes, ids or directly on the HTML element.

This example shows the color as border, it can be applied via the CSS property "border" or "border-color".

```
.border, #border, table{ border:4px solid
#2D1719 }
```

If only the border color should be changed use the property `border-color`.

```
.border{ border-color:#2D1719 }
```

If you want to add a box shadow in that color use:

Here you see how a box with a 4 pixel #2D1719 colored shadow looks like.

```
.boxshadow{ -moz-box-shadow:4px 4px 4px  
4px #2D1719; -webkit-box-shadow:4px 4px  
4px 4px #2D1719; box-shadow:4px 4px 4px  
4px #2D1719 }
```

Background

The CSS property to change the background color of an element to Hex 2D1719 is called "background". The background property can be set on classes, ids or directly on the HTML element.

```
.background, #background, body{  
background:#2D1719 }
```

If only the background color should be changed can be used:

```
.background{ background-color:#2D1719 }
```

This example shows the color as background, it is applied via the CSS property "background".

To optimize and compress your CSS code, you can use our [online CSS compressor and optimizer](#) based on csstidy. If you want to create a linear or radial gradient as background or border, check our [CSS Gradient Generator](#).

Hey! You found this booklet interesting? Support Converting Colors with the new Membership Option!

The pro membership hides all ads, plus gives you double the colors in the color bucket, and more awesome pro features!

[Learn more, Memberships starting at \\$2.50/m!](#)

**Follow me
on Twitter!**

@ConvertingColor