

Converting Colors

Hex(2E180D)

Have a look what the booklet for
Hex(2E180D) contains.

Hex(2E180D)	3
<i>Conversions</i>	4
<i>Details</i>	6
<i>Harmonies</i>	11
<i>Previews</i>	23
<i>Color Blindness Simulation</i>	26
<i>CSS Examples</i>	29

Color

Hex(2E180D)

Conversions

Conversions Part 1

Format	Color
Hex	2E180D
RGB	46, 24, 13
RGB Percent	18%, 9%, 5%
CMY	0.8196, 0.9059, 0.9490
CMYK	0.00, 0.48, 0.72, 0.82
HSL	20°, 56%, 12%
HSV	20°, 72%, 18%
XYZ	1.5260, 1.2632, 0.5442
YIQ	29.3240, 16.6430, 1.2430

Conversions

Conversions Part 2

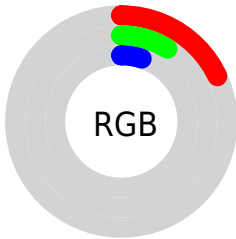
Format	Color
RYB	46, 30, 13
Decimal	3020813
CIELab	11.02, 9.69, 11.21
CIElCh	11, 14.817, 49.154
Yxy	1.2632, 0.4578, 0.3790
Android (android.graphics.Color)	4281210893 (0xFF2E180D)
YUV	29.3240, -8.0477, 14.6249
Hunter-Lab	11.2391, 4.5676, 4.9967

Details

The Hex color **2E180D** is a dark color, and the websafe version is hex **330000**. A complement of this color would be **0D232E**, and the grayscale version is **1D1D1D**.

A 20% lighter version of the original color is **5D4338**, and **000000** is the 20% darker color. If you saturate the color by 10%, you get **2E1508**, and if you desaturate by 10%, it is **2E1B12**.

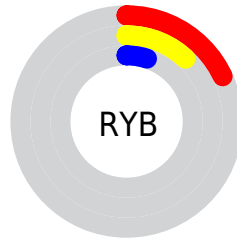
Distribution



Red (18%)

Green (9%)

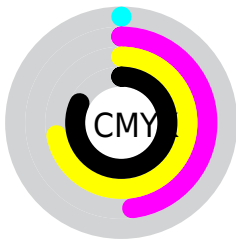
Blue (5%)



Red (18%)

Yellow (12%)

Blue (5%)

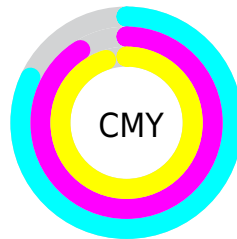


Cyan (0%)

Magenta (48%)

Yellow (72%)

Black (82%)



Cyan (82%)

Magenta (91%)

Yellow (95%)

Brightness & Saturation Gradients

These gradients show how the Hex color 2E180D changes by changing the brightness by 10 percent. The first figure shows a shift by +10% for each color and the second figure -10%.

Similar to the brightness gradients but the following saturation gradients show a change of the Hex color 2E180D by changing the saturation by 10% instead.

 2E180D

 2E180D

 FFFBED

 180000

 5D4338

 000000

 775B4F

 917367

 AC8D80

 C7A79A

 E4C2B5

 FFDED0

 2E180D

 2E180D

■ 2E1508

■ 2E1B12

■ 2E1204

■ 2E1E16

■ 2E0F00

■ 2E211B

■ 2E241F

■ 2E2724

■ 2E2A29

■ 2E2D2D

■ 2E3132

■ 2E3436

Harmonies

Analogous

The Analogous color harmony consists of three colors that are next to each other on the color wheel.



311517



2E180D



281C05

Triad

The Triadic color harmony groups three colors that are evenly spaced from another and form a triangle on the color wheel.



2E180D



032219



191C31

Complementary

The Complementary color scheme is a pair of colors which are on the opposite of each other on the color wheel.



2E180D



0D232E

Split Complementary

Split-complementary colors differ from the complementary color scheme. The scheme consists of three colors, the original color and two neighbors of the complement color.



042031



2E180D



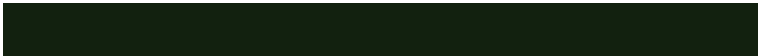
002324

Square

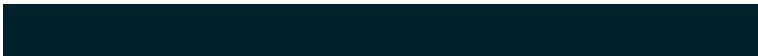
The Square scheme is like the rectangle color scheme, but the four colors are evenly spaced on the color wheel.



2E180D



12210F



00222C



26182B

Rectangle

The Rectangle color scheme consists of four colors that form a rectangle on the color wheel.



2E180D



221E04



00222C



131E31

Sweetspot

The Sweet Spot groups the original color and five complimentary colors.



2E180D



3B322E



2E0D23



1F1917



9E9E9E



1F1F1F

Same Dimension

The Same Dimension uses a secret algorithm to generate beautiful new colors.



2E180D



3B1908



2E290D



171515



571D00



D64700

Inverse Universe

The Inverse Universe completely reimagines the original color for something new.



0D232E



082A3B



0D132E



151617



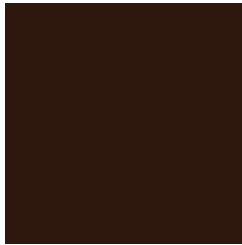
003A57



008FD6

Previews

White Background



This preview shows how the Hex color 2E180D looks on a white background.

Color Contrast Check

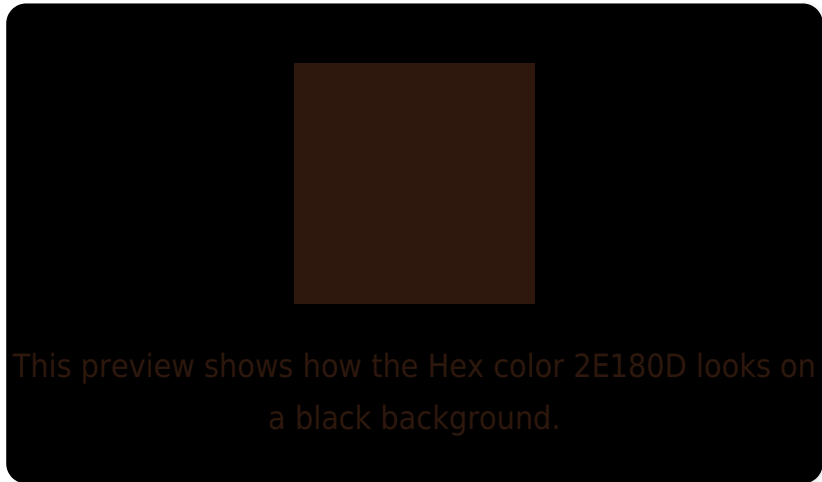
Large Text (above 18pt) WCAG AA ✓ Pass

Any Text WCAG AA ✓ Pass

Large Text (above 18pt) WCAG AAA ✓ Pass

Any Text WCAG AAA ✓ Pass

Black Background



Color Contrast Check

Large Text (above 18pt) WCAG AA × Fail

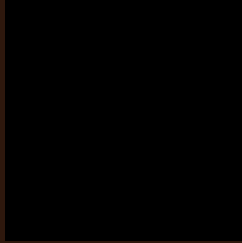
Any Text WCAG AA × Fail

Large Text (above 18pt) WCAG AAA × Fail

Any Text WCAG AAA × Fail

If you want to check with other color combinations, try the [Color Contrast Checker](#).

Hex 2E180D Background



This preview shows how black text looks on a background with the Hex color 2E180D.

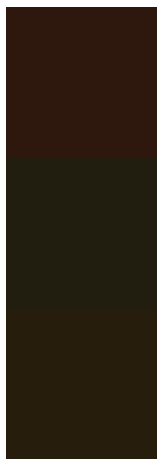


This preview shows how white text looks on a background with the Hex color 2E180D.

Color Blindness Simulation

Color vision deficiency is a very complex topic, and I could not describe the different causes any better than Wikipedia does, so if you want to learn more, you should check out their [article about color blindness](#).

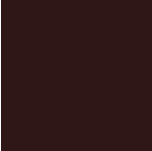
Dichromacy



Original Color
2E180D

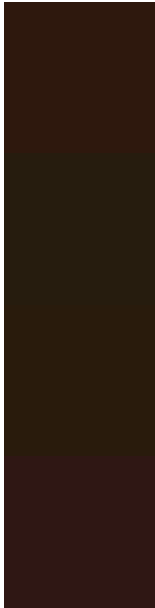
Protanopia
211E0F

Deuteranopia
261D0C



Tritanopia
2F1718

Trichromacy



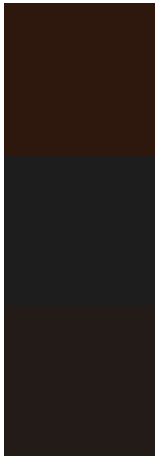
Original Color
2E180D

Protanomaly
261C0E

Deuteranomaly
291B0C

Tritanomaly
2F1714

Monochromacy



Original Color
2E180D

Achromatopsia
1D1D1D

Achromatomaly
231B17

CSS Examples

Text

The CSS property to change the color of the text to Hex 2E180D is called "color". The color property can be set on classes, ids or directly on the HTML element.

This example shows how text in the color #2E180D looks like.

```
.text, #text, p{  
    color:#2E180D  
}
```

If you want to add a text shadow in that color use the text-shadow property, you can generate a text shadow directly with our [CSS Text Shadow Generator](#).

Here you see how black text with a 4 pixel #2E180D colored shadow looks like.

```
.shadow{ text-shadow: 4px 4px 2px #2E180D
}
```

Border

The CSS property to change the border of an element to Hex 2E180D is called "border". The border property can be set on classes, ids or directly on the HTML element.

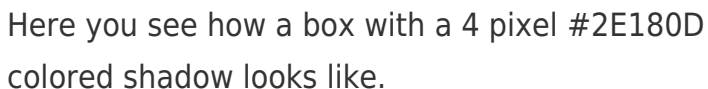
This example shows the color as border, it can be applied via the CSS property "border" or "border-color".

```
.border, #border, table{ border:4px solid
#2E180D }
```

If only the border color should be changed use the property `border-color`.

```
.border{ border-color:#2E180D }
```

If you want to add a box shadow in that color use:



Here you see how a box with a 4 pixel #2E180D colored shadow looks like.

```
.boxshadow{ -moz-box-shadow:4px 4px 4px  
4px #2E180D; -webkit-box-shadow:4px 4px  
4px 4px #2E180D; box-shadow:4px 4px 4px  
4px #2E180D }
```

Background

The CSS property to change the background color of an element to Hex 2E180D is called "background". The background property can be set on classes, ids or directly on the HTML element.

```
.background, #background, body{  
background:#2E180D }
```

If only the background color should be changed can be used:

```
.background{ background-color:#2E180D }
```

This example shows the color as background, it is applied via the CSS property "background".

To optimize and compress your CSS code, you can use our [online CSS compressor and optimizer](#) based on csstidy. If you want to create a linear or radial gradient as background or border, check our [CSS Gradient Generator](#).

Hey! You found this booklet interesting? Support Converting Colors with the new Membership Option!

The pro membership hides all ads, plus gives you double the colors in the color bucket, and more awesome pro features!

[Learn more, Memberships starting at \\$2.50/m!](#)

**Follow me
on Twitter!**

@ConvertingColor