

Converting Colors

Hex(2E190D)

Have a look what the booklet for
Hex(2E190D) contains.

Hex(2E190D)	3
<i>Conversions</i>	4
<i>Details</i>	6
<i>Harmonies</i>	11
<i>Previews</i>	23
<i>Color Blindness Simulation</i>	26
<i>CSS Examples</i>	29

Color

Hex(2E190D)

Conversions

Conversions Part 1

Format	Color
Hex	2E190D
RGB	46, 25, 13
RGB Percent	18%, 10%, 5%
CMY	0.8196, 0.9020, 0.9490
CMYK	0.00, 0.46, 0.72, 0.82
HSL	22°, 56%, 12%
HSV	22°, 72%, 18%
XYZ	1.5470, 1.3052, 0.5512
YIQ	29.9110, 16.3680, 0.7200

Conversions

Conversions Part 2

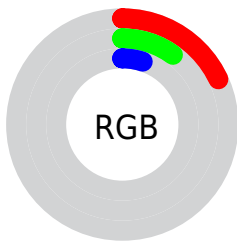
Format	Color
RYB	46, 32, 13
Decimal	3021069
CIELab	11.31, 8.99, 11.62
CIElCh	11, 14.691, 52.269
Yxy	1.3052, 0.4546, 0.3835
Android (android.graphics.Color)	4281211149 (0xFF2E190D)
YUV	29.9110, -8.3371, 14.1101
Hunter-Lab	11.4244, 4.1783, 5.1367

Details

The Hex color **2E190D** is a dark color, and the websafe version is hex **330000**. A complement of this color would be **0D222E**, and the grayscale version is **1E1E1E**.

A 20% lighter version of the original color is **5D4438**, and **000000** is the 20% darker color. If you saturate the color by 10%, you get **2E1608**, and if you desaturate by 10%, it is **2E1C12**.

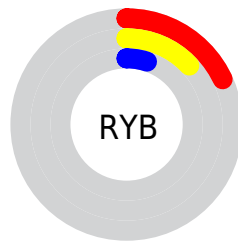
Distribution



Red (18%)

Green (10%)

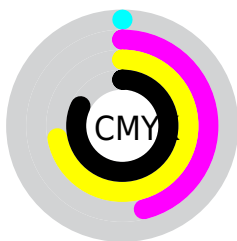
Blue (5%)



Red (18%)

Yellow (13%)

Blue (5%)

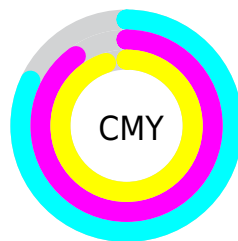


Cyan (0%)

Magenta (46%)

Yellow (72%)

Black (82%)



Cyan (82%)

Magenta (90%)

Yellow (95%)

Brightness & Saturation Gradients

These gradients show how the Hex color 2E190D changes by changing the brightness by 10 percent. The first figure shows a shift by +10% for each color and the second figure -10%.

Similar to the brightness gradients but the following saturation gradients show a change of the Hex color 2E190D by changing the saturation by 10% instead.

 2E190D

 2E190D


 FFFCED

 180000

 5D4438

 000000

 775C4F

 917467

 AC8E80

 C7A89A

 E3C4B5

 FFE0D0

 2E190D

 2E190D

■ 2E1608

■ 2E1C12

■ 2E1304

■ 2E1F16

■ 2E1100

■ 2E221B

■ 2E251F

■ 2E2824

■ 2E2B29

■ 2E2D2D

■ 2E3032

■ 2E3336

Harmonies

Analogous

The Analogous color harmony consists of three colors that are next to each other on the color wheel.



311617



2E190D



271D06

Triad

The Triadic color harmony groups three colors that are evenly spaced from another and form a triangle on the color wheel.



2E190D



03231B



1B1C31

Complementary

The Complementary color scheme is a pair of colors which are on the opposite of each other on the color wheel.



2E190D



0D222E

Split Complementary

Split-complementary colors differ from the complementary color scheme. The scheme consists of three colors, the original color and two neighbors of the complement color.



072032



2E190D



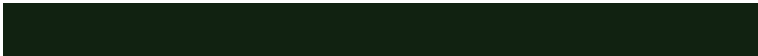
002325

Square

The Square scheme is like the rectangle color scheme, but the four colors are evenly spaced on the color wheel.



2E190D



112211



00222E



28192A

Rectangle

The Rectangle color scheme consists of four colors that form a rectangle on the color wheel.



2E190D



211F06



00222E



151E32

Sweetspot

The Sweet Spot groups the original color and five complimentary colors.



2E190D



3B322E



2E0D22



1F1A17



9E9E9E



1F1F1F

Same Dimension

The Same Dimension uses a secret algorithm to generate beautiful new colors.



2E190D



3B1B08



2E290D



171515



572000



D64E00

Inverse Universe

The Inverse Universe completely reimagines the original color for something new.



0D222E



08283B



0D122E



151617



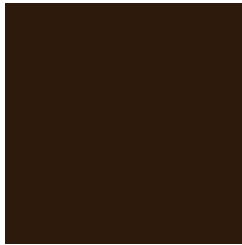
003757



0088D6

Previews

White Background



This preview shows how the Hex color 2E190D looks on a white background.

Color Contrast Check

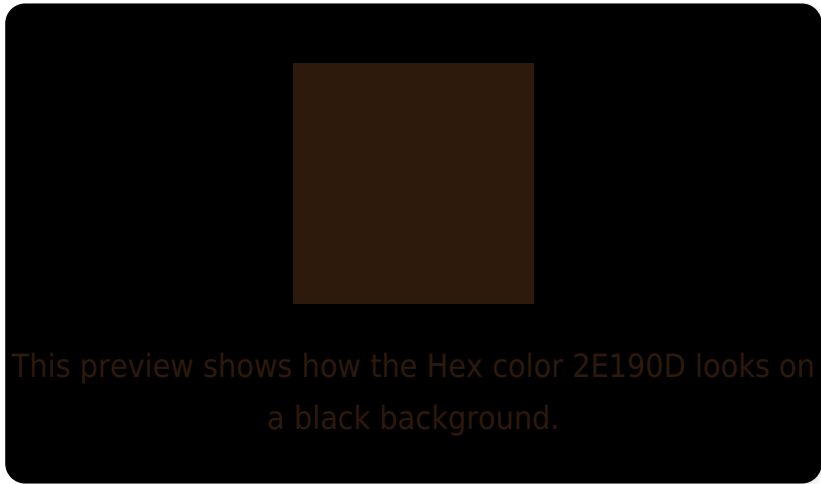
Large Text (above 18pt) WCAG AA ✓ Pass

Any Text WCAG AA ✓ Pass

Large Text (above 18pt) WCAG AAA ✓ Pass

Any Text WCAG AAA ✓ Pass

Black Background



Color Contrast Check

Large Text (above 18pt) WCAG AA × Fail

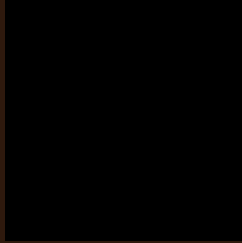
Any Text WCAG AA × Fail

Large Text (above 18pt) WCAG AAA × Fail

Any Text WCAG AAA × Fail

If you want to check with other color combinations, try the [Color Contrast Checker](#).

Hex 2E190D Background



This preview shows how black text looks on a background with the Hex color 2E190D.

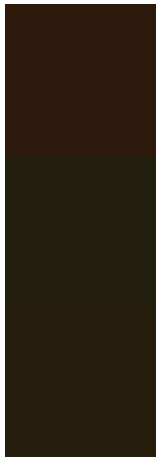


This preview shows how white text looks on a background with the Hex color 2E190D.

Color Blindness Simulation

Color vision deficiency is a very complex topic, and I could not describe the different causes any better than Wikipedia does, so if you want to learn more, you should check out their [article about color blindness](#).

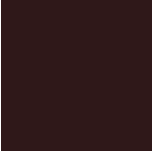
Dichromacy



Original Color
2E190D

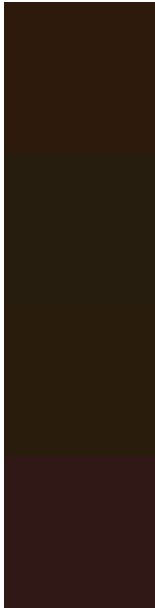
Protanopia
221F0F

Deuteranopia
261D0C



Tritanopia
2F1819

Trichromacy



Original Color
2E190D

Protanomaly
261D0E

Deuteranomaly
291C0C

Tritanomaly
2F1815

Monochromacy



Original Color
2E190D

Achromatopsia
1E1E1E

Achromatomaly
241C18

CSS Examples

Text

The CSS property to change the color of the text to Hex 2E190D is called "color". The color property can be set on classes, ids or directly on the HTML element.

This example shows how text in the color #2E190D looks like.

```
.text, #text, p{  
    color:#2E190D  
}
```

If you want to add a text shadow in that color use the text-shadow property, you can generate a text shadow directly with our [CSS Text Shadow Generator](#).

Here you see how black text with a 4 pixel #2E190D colored shadow looks like.

```
.shadow{ text-shadow: 4px 4px 2px #2E190D
}
```

Border

The CSS property to change the border of an element to Hex 2E190D is called "border". The border property can be set on classes, ids or directly on the HTML element.

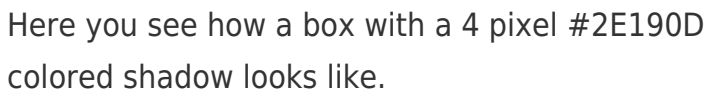
This example shows the color as border, it can be applied via the CSS property "border" or "border-color".

```
.border, #border, table{ border:4px solid
#2E190D }
```

If only the border color should be changed use the property `border-color`.

```
.border{ border-color:#2E190D }
```

If you want to add a box shadow in that color use:



Here you see how a box with a 4 pixel #2E190D colored shadow looks like.

```
.boxshadow{ -moz-box-shadow:4px 4px 4px  
4px #2E190D; -webkit-box-shadow:4px 4px  
4px 4px #2E190D; box-shadow:4px 4px 4px  
4px #2E190D }
```

Background

The CSS property to change the background color of an element to Hex 2E190D is called "background". The background property can be set on classes, ids or directly on the HTML element.

```
.background, #background, body{  
background:#2E190D }
```

If only the background color should be changed can be used:

```
.background{ background-color:#2E190D }
```

This example shows the color as background, it is applied via the CSS property "background".

To optimize and compress your CSS code, you can use our [online CSS compressor and optimizer](#) based on csstidy. If you want to create a linear or radial gradient as background or border, check our [CSS Gradient Generator](#).

Hey! You found this booklet interesting? Support Converting Colors with the new Membership Option!

The pro membership hides all ads, plus gives you double the colors in the color bucket, and more awesome pro features!

[Learn more, Memberships starting at \\$2.50/m!](#)

**Follow me
on Twitter!**

@ConvertingColor