

Converting Colors

Hex(2F0E11)

Have a look what the booklet for
Hex(2F0E11) contains.

Hex(2F0E11)	3
<i>Conversions</i>	4
<i>Details</i>	6
<i>Harmonies</i>	11
<i>Previews</i>	23
<i>Color Blindness Simulation</i>	26
<i>CSS Examples</i>	29

Color

Hex(2F0E11)

Conversions

Conversions Part 1

Format	Color
Hex	2F0E11
RGB	47, 14, 17
RGB Percent	18%, 5%, 7%
CMY	0.8157, 0.9451, 0.9333
CMYK	0.00, 0.70, 0.64, 0.82
HSL	355°, 54%, 12%
HSV	355°, 70%, 18%
XYZ	1.4305, 0.9589, 0.6400
YIQ	24.2090, 18.7050, 7.9290

Conversions

Conversions Part 2

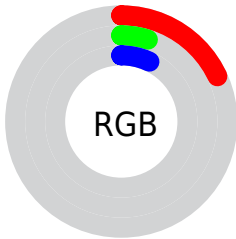
Format	Color
R_YB	47, 14, 17
Decimal	3083793
CIE Lab	8.64, 17.22, 5.75
CIE LCh	9, 18.158, 18.459
Yxy	0.9589, 0.4722, 0.3165
Android (android.graphics.Color)	4281273873 (0xFF2F0E11)
YUV	24.2090, -3.5540, 19.9877
Hunter-Lab	9.7923, 8.9397, 2.9795

Details

The Hex color **2F0E11** is a dark color, and the websafe version is hex **330000**. A complement of this color would be **0E2F2C**, and the grayscale version is **181818**.

A 20% lighter version of the original color is **5F393B**, and **000000** is the 20% darker color. If you saturate the color by 10%, you get **2F090D**, and if you desaturate by 10%, it is **2F1315**.

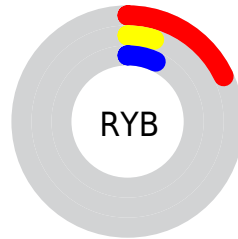
Distribution



Red (18%)

Green (5%)

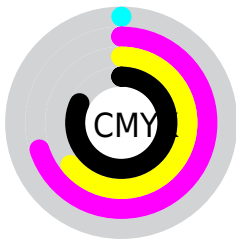
Blue (7%)



Red (18%)

Yellow (5%)

Blue (7%)

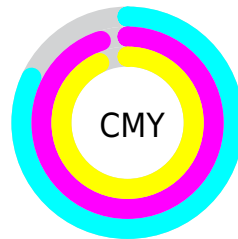


Cyan (0%)

Magenta (70%)

Yellow (64%)

Black (82%)



Cyan (82%)

Magenta (95%)

Yellow (93%)

Brightness & Saturation Gradients

These gradients show how the Hex color 2F0E11 changes by changing the brightness by 10 percent. The first figure shows a shift by +10% for each color and the second figure -10%.

Similar to the brightness gradients but the following saturation gradients show a change of the Hex color 2F0E11 by changing the saturation by 10% instead.

 2F0E11

 2F0E11

 FFEFF1

 180001

 5F393B

 000000

 795052

 93696B

 AE8284

 CA9C9E

 E6B7B9

 FFD3D4

 2F0E11

 2F0E11

■ 2F090D

■ 2F1315

■ 2F0508

■ 2F171A

■ 2F0004

■ 2F1C1E

■ 2F2122

■ 2F2626

■ 2F2A2B

■ 2F2F2F

■ 2F3433

■ 2F3837

Harmonies

Analogous

The Analogous color harmony consists of three colors that are next to each other on the color wheel.



2C0E1E



2F0E11



2C1200

Triad

The Triadic color harmony groups three colors that are evenly spaced from another and form a triangle on the color wheel.



2F0E11



0A1D02



001B30

Complementary

The Complementary color scheme is a pair of colors which are on the opposite of each other on the color wheel.



2F0E11



0E2F2C

Split Complementary

Split-complementary colors differ from the complementary color scheme. The scheme consists of three colors, the original color and two neighbors of the complement color.



001E2B



2F0E11



001F13

Square

The Square scheme is like the rectangle color scheme, but the four colors are evenly spaced on the color wheel.



2F0E11



1A1A00



001F20



111730

Rectangle

The Rectangle color scheme consists of four colors that form a rectangle on the color wheel.



2F0E11



271500



001F20



001C2F

Sweetspot

The Sweet Spot groups the original color and five complimentary colors.



2F0E11



3D3032



2C0E2F



1F1718



9E9E9E



1F1F1F

Same Dimension

The Same Dimension uses a secret algorithm to generate beautiful new colors.



2F0E11



3D0A0E



2F1B0E



171515



570008



D60013

Inverse Universe

The Inverse Universe completely reimagines the original color for something new.



2F0E11



3D0A0E



0E222F



171515



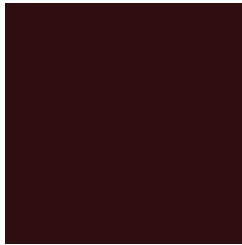
570008



D60013

Previews

White Background



This preview shows how the Hex color 2F0E11 looks on a white background.

Color Contrast Check

Large Text (above 18pt) WCAG AA ✓ Pass

Any Text WCAG AA ✓ Pass

Large Text (above 18pt) WCAG AAA ✓ Pass

Any Text WCAG AAA ✓ Pass

Black Background



Color Contrast Check

Large Text (above 18pt) WCAG AA × Fail

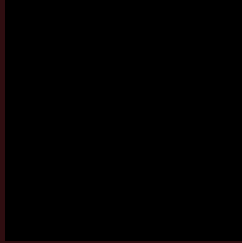
Any Text WCAG AA × Fail

Large Text (above 18pt) WCAG AAA × Fail

Any Text WCAG AAA × Fail

If you want to check with other color combinations, try the [Color Contrast Checker](#).

Hex 2F0E11 Background



This preview shows how black text looks on a background with the Hex color 2F0E11.

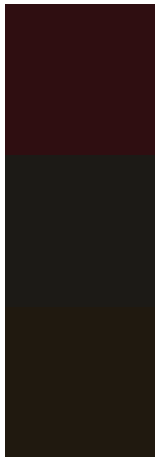


This preview shows how white text looks on a background with the Hex color 2F0E11.

Color Blindness Simulation

Color vision deficiency is a very complex topic, and I could not describe the different causes any better than Wikipedia does, so if you want to learn more, you should check out their [article about color blindness](#).

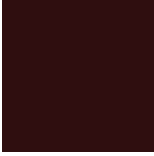
Dichromacy



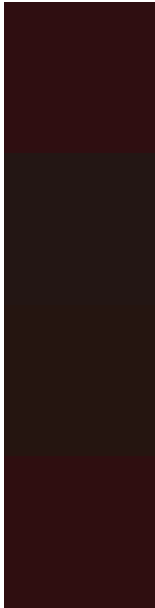
Original Color
2F0E11

Protanopia
1C1A16

Deuteranopia
20190F



Trichromacy



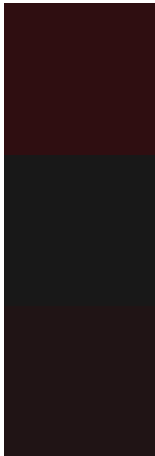
Original Color
2F0E11

Protanomaly
231614

Deuteranomaly
251510

Tritanomaly
2F0E10

Monochromacy



Original Color
2F0E11

Achromatopsia
181818

Achromatomaly
201415

CSS Examples

Text

The CSS property to change the color of the text to Hex 2F0E11 is called "color". The color property can be set on classes, ids or directly on the HTML element.

This example shows how text in the color #2F0E11 looks like.

```
.text, #text, p{  
    color:#2F0E11  
}
```

If you want to add a text shadow in that color use the text-shadow property, you can generate a text shadow directly with our [CSS Text Shadow Generator](#).

Here you see how black text with a 4 pixel #2F0E11 colored shadow looks like.

```
.shadow{ text-shadow: 4px 4px 2px #2F0E11  
}
```

Border

The CSS property to change the border of an element to Hex 2F0E11 is called "border". The border property can be set on classes, ids or directly on the HTML element.

This example shows the color as border, it can be applied via the CSS property "border" or "border-color".

```
.border, #border, table{ border:4px solid  
#2F0E11 }
```

If only the border color should be changed use the property `border-color`.

```
.border{ border-color:#2F0E11 }
```

If you want to add a box shadow in that color use:

Here you see how a box with a 4 pixel #2F0E11 colored shadow looks like.

```
.boxshadow{ -moz-box-shadow:4px 4px 4px  
4px #2F0E11; -webkit-box-shadow:4px 4px  
4px 4px #2F0E11; box-shadow:4px 4px 4px  
4px #2F0E11 }
```

Background

The CSS property to change the background color of an element to Hex 2F0E11 is called "background". The background property can be set on classes, ids or directly on the HTML element.

```
.background, #background, body{  
background:#2F0E11 }
```

If only the background color should be changed can be used:

```
.background{ background-color:#2F0E11 }
```

This example shows the color as background, it is applied via the CSS property "background".

To optimize and compress your CSS code, you can use our [online CSS compressor and optimizer](#) based on csstidy. If you want to create a linear or radial gradient as background or border, check our [CSS Gradient Generator](#).

Hey! You found this booklet interesting? Support Converting Colors with the new Membership Option!

The pro membership hides all ads, plus gives you double the colors in the color bucket, and more awesome pro features!

[Learn more, Memberships starting at \\$2.50/m!](#)

**Follow me
on Twitter!**

@ConvertingColor