

Converting Colors

Hex(2F1010)

Have a look what the booklet for
Hex(2F1010) contains.

Hex(2F1010)	3
<i>Conversions</i>	4
<i>Details</i>	6
<i>Harmonies</i>	11
<i>Previews</i>	23
<i>Color Blindness Simulation</i>	26
<i>CSS Examples</i>	29

Color

Hex(2F1010)

Conversions

Conversions Part 1

Format	Color
Hex	2F1010
RGB	47, 16, 16
RGB Percent	18%, 6%, 6%
CMY	0.8157, 0.9373, 0.9373
CMYK	0.00, 0.66, 0.66, 0.82
HSL	0°, 49%, 12%
HSV	0°, 66%, 18%
XYZ	1.4511, 1.0123, 0.6091
YIQ	25.2690, 18.4760, 6.5720

Conversions

Conversions Part 2

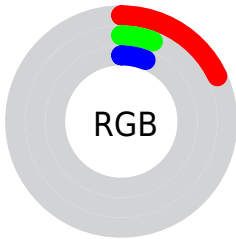
Format	Color
RYB	47, 16, 16
Decimal	3084304
CIELab	9.09, 15.88, 6.97
CIELCh	9, 17.337, 23.691
Yxy	1.0123, 0.4723, 0.3295
Android (android.graphics.Color)	4281274384 (0xFF2F1010)
YUV	25.2690, -4.5696, 19.0581
Hunter-Lab	10.0615, 8.1365, 3.4536

Details

The Hex color **2F1010** is a dark color, and the websafe version is hex **330000**. A complement of this color would be **102F2F**, and the grayscale version is **191919**.

A 20% lighter version of the original color is **5F3B3A**, and **000000** is the 20% darker color. If you saturate the color by 10%, you get **2F0B0B**, and if you desaturate by 10%, it is **2F1515**.

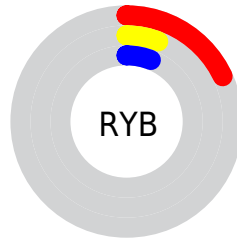
Distribution



 Red (18%)

 Green (6%)

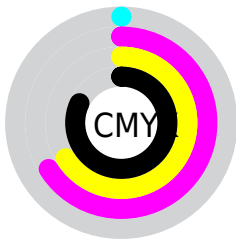
 Blue (6%)



 Red (18%)

 Yellow (6%)

 Blue (6%)

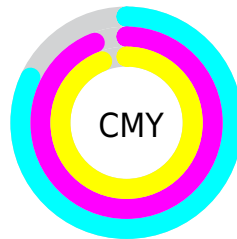


 Cyan (0%)

 Magenta (66%)

 Yellow (66%)

 Black (82%)



 Cyan (82%)

 Magenta (94%)

 Yellow (94%)

Brightness & Saturation Gradients

These gradients show how the Hex color 2F1010 changes by changing the brightness by 10 percent. The first figure shows a shift by +10% for each color and the second figure -10%.

Similar to the brightness gradients but the following saturation gradients show a change of the Hex color 2F1010 by changing the saturation by 10% instead.

 2F1010

 2F1010

 FFF1F0

 190001

 5F3B3A

 000000

 795251

 936B6A

 AE8483

 CA9E9D

 E6B9B8

 FFD5D3

 2F1010

 2F1010

■ 2F0B0B

■ 2F1515

■ 2F0707

■ 2F1919

■ 2F0202

■ 2F1E1E

■ 2F0000

■ 2F2323

■ 2F2828

■ 2F2C2C

■ 2F3131

■ 2F3636

■ 2F3A3A

Harmonies

Analogous

The Analogous color harmony consists of three colors that are next to each other on the color wheel.



2D101D



2F1010



2C1400

Triad

The Triadic color harmony groups three colors that are evenly spaced from another and form a triangle on the color wheel.



2F1010



081E08



001C31

Complementary

The Complementary color scheme is a pair of colors which are on the opposite of each other on the color wheel.



2F1010



102F2F

Split Complementary

Split-complementary colors differ from the complementary color scheme. The scheme consists of three colors, the original color and two neighbors of the complement color.



001E2C



2F1010



002017

Square

The Square scheme is like the rectangle color scheme, but the four colors are evenly spaced on the color wheel.



2F1010



191C00



002023



16182F

Rectangle

The Rectangle color scheme consists of four colors that form a rectangle on the color wheel.



2F1010



271700



002023



001D30

Sweetspot

The Sweet Spot groups the original color and five complimentary colors.



2F1010



3D3131



2F102F



1F1717



9E9E9E



1F1F1F

Same Dimension

The Same Dimension uses a secret algorithm to generate beautiful new colors.



2F1010



3D0D0D



2F2010



171515



570000



D60000

Inverse Universe

The Inverse Universe completely reimagines the original color for something new.



102F2F



0D3D3D



10202F



151717



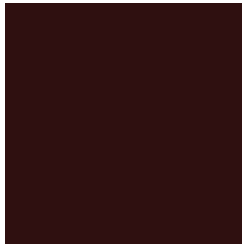
005757



00D6D6

Previews

White Background



This preview shows how the Hex color 2F1010 looks on a white background.

Color Contrast Check

Large Text (above 18pt) WCAG AA ✓ Pass

Any Text WCAG AA ✓ Pass

Large Text (above 18pt) WCAG AAA ✓ Pass

Any Text WCAG AAA ✓ Pass

Black Background



Color Contrast Check

Large Text (above 18pt) WCAG AA × Fail

Any Text WCAG AA × Fail

Large Text (above 18pt) WCAG AAA × Fail

Any Text WCAG AAA × Fail

If you want to check with other color combinations, try the [Color Contrast Checker](#).

Hex 2F1010 Background



This preview shows how black text looks on a background with the Hex color 2F1010.



This preview shows how white text looks on a background with the Hex color 2F1010.

Color Blindness Simulation

Color vision deficiency is a very complex topic, and I could not describe the different causes any better than Wikipedia does, so if you want to learn more, you should check out their [article about color blindness](#).

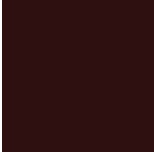
Dichromacy



Original Color
2F1010

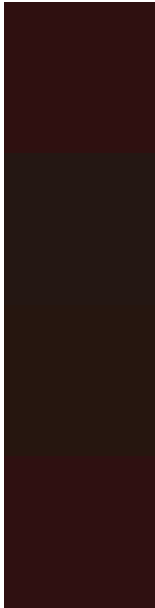
Protanopia
1D1B14

Deuteranopia
211A0E



Tritanopia
2F1011

Trichromacy



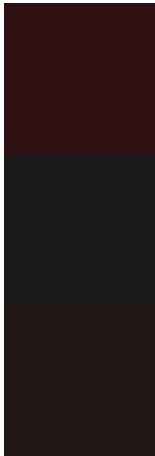
Original Color
2F1010

Protanomaly
241713

Deuteranomaly
26160F

Tritanomaly
2F1011

Monochromacy



Original Color
2F1010

Achromatopsia
191919

Achromatomaly
211616

CSS Examples

Text

The CSS property to change the color of the text to Hex 2F1010 is called "color". The color property can be set on classes, ids or directly on the HTML element.

This example shows how text in the color #2F1010 looks like.

```
.text, #text, p{  
    color:#2F1010  
}
```

If you want to add a text shadow in that color use the text-shadow property, you can generate a text shadow directly with our [CSS Text Shadow Generator](#).

Here you see how black text with a 4 pixel #2F1010 colored shadow looks like.

```
.shadow{ text-shadow: 4px 4px 2px #2F1010
}
```

Border

The CSS property to change the border of an element to Hex 2F1010 is called "border". The border property can be set on classes, ids or directly on the HTML element.

This example shows the color as border, it can be applied via the CSS property "border" or "border-color".

```
.border, #border, table{ border:4px solid
#2F1010 }
```

If only the border color should be changed use the property `border-color`.

```
.border{ border-color:#2F1010 }
```

If you want to add a box shadow in that color use:

Here you see how a box with a 4 pixel #2F1010 colored shadow looks like.

```
.boxshadow{ -moz-box-shadow:4px 4px 4px  
4px #2F1010; -webkit-box-shadow:4px 4px  
4px 4px #2F1010; box-shadow:4px 4px 4px  
4px #2F1010 }
```

Background

The CSS property to change the background color of an element to Hex 2F1010 is called "background". The background property can be set on classes, ids or directly on the HTML element.

```
.background, #background, body{  
background:#2F1010 }
```

If only the background color should be changed can be used:

```
.background{ background-color:#2F1010 }
```

This example shows the color as background, it is applied via the CSS property "background".

To optimize and compress your CSS code, you can use our [online CSS compressor and optimizer](#) based on csstidy. If you want to create a linear or radial gradient as background or border, check our [CSS Gradient Generator](#).

Hey! You found this booklet interesting? Support Converting Colors with the new Membership Option!

The pro membership hides all ads, plus gives you double the colors in the color bucket, and more awesome pro features!

[Learn more, Memberships starting at \\$2.50/m!](#)

**Follow me
on Twitter!**

@ConvertingColor