

# Converting Colors

Hex(2F190F)

Have a look what the booklet for  
Hex(2F190F) contains.

<b>Hex(2F190F)</b> .....	3
<b><i>Conversions</i></b> .....	4
<b><i>Details</i></b> .....	6
<b><i>Harmonies</i></b> .....	11
<b><i>Previews</i></b> .....	23
<b><i>Color Blindness Simulation</i></b> .....	26
<b><i>CSS Examples</i></b> .....	29

# Color

**Hex(2F190F)**

# Conversions

## Conversions Part 1

Format	Color
Hex	2F190F
RGB	47, 25, 15
RGB Percent	18%, 10%, 6%
CMY	0.8157, 0.9020, 0.9412
CMYK	0.00, 0.47, 0.68, 0.82
HSL	19°, 52%, 12%
HSV	19°, 68%, 18%
XYZ	1.6061, 1.3341, 0.6248
YIQ	30.4380, 16.3220, 1.5540

# Conversions

## Conversions Part 2

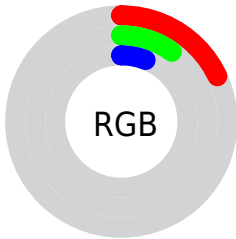
<b>Format</b>	<b>Color</b>
<a href="#">RYB</a>	<a href="#">47, 30, 15</a>
Decimal	<a href="#">3086607</a>
CIELab	<a href="#">11.51, 9.72, 10.91</a>
CIELCh	<a href="#">12, 14.614, 48.299</a>
Yxy	<a href="#">1.3341, 0.4505, 0.3742</a>
Android (android.graphics.Color)	<a href="#">4281276687 (0xFF2F190F)</a>
YUV	<a href="#">30.4380, -7.6109, 14.5249</a>
Hunter-Lab	<a href="#">11.5503, 4.6087, 4.8780</a>

# Details

The Hex color **2F190F** is a dark color, and the websafe version is hex **330000**. A complement of this color would be **0F252F**, and the grayscale version is **1F1F1F**.

A 20% lighter version of the original color is **5F443A**, and **000000** is the 20% darker color. If you saturate the color by 10%, you get **2F160A**, and if you desaturate by 10%, it is **2F1C14**.

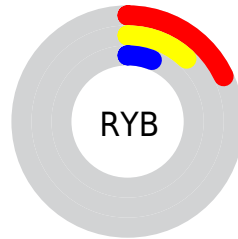
# Distribution



Red (18%)

Green (10%)

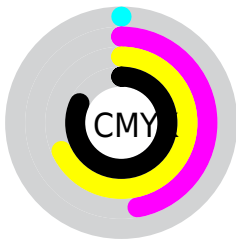
Blue (6%)



Red (18%)

Yellow (12%)

Blue (6%)

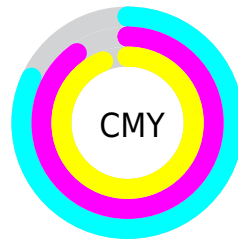


Cyan (0%)

Magenta (47%)

Yellow (68%)

Black (82%)



Cyan (82%)

Magenta (90%)

Yellow (94%)

# Brightness & Saturation Gradients

These gradients show how the Hex color 2F190F changes by changing the brightness by 10 percent. The first figure shows a shift by +10% for each color and the second figure -10%.

Similar to the brightness gradients but the following saturation gradients show a change of the Hex color 2F190F by changing the saturation by 10% instead.



 2F190F

 2F190F

 FFFCEF

 1A0000

 5F443A

 000000

 785C50

 927469

 AD8E82

 C9A89C

 E5C4B7

 FFE0D2

 2F190F

 2F190F

■ 2F160A

■ 2F1C14

■ 2F1306

■ 2F1F18

■ 2F0F01

■ 2F231D

■ 2F0F00

■ 2F2622

■ 2F2927

■ 2F2C2B

■ 2F3030

■ 2F3335

■ 2F3639

# Harmonies

## Analogous

The Analogous color harmony consists of three colors that are next to each other on the color wheel.



321719



2F190F



291D07

# Triad

The Triadic color harmony groups three colors that are evenly spaced from another and form a triangle on the color wheel.



2F190F



05231A



191D31

# Complementary

The Complementary color scheme is a pair of colors which are on the opposite of each other on the color wheel.



2F190F



0F252F

# Split Complementary

Split-complementary colors differ from the complementary color scheme. The scheme consists of three colors, the original color and two neighbors of the complement color.



052132



2F190F



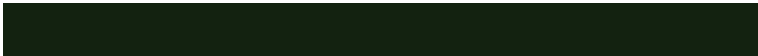
002424

# Square

The Square scheme is like the rectangle color scheme, but the four colors are evenly spaced on the color wheel.



2F190F



132210



00232D



271A2C

# Rectangle

The Rectangle color scheme consists of four colors that form a rectangle on the color wheel.



2F190F



231F06



00232D



131F32



# Sweetspot

The Sweet Spot groups the original color and five complimentary colors.



2F190F



3D3531



2F0F25



1F1A17



9E9E9E



1F1F1F



# Same Dimension

The Same Dimension uses a secret algorithm to generate beautiful new colors.



2F190F



3D1B0B



2F290F



171515



571B00



D64300



# Inverse Universe

The Inverse Universe completely reimagines the original color for something new.



0F252F



0B2E3D



0F152F



151617



003C57

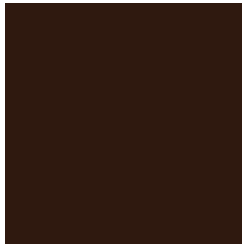


0093D6



# Previews

## White Background



This preview shows how the Hex color 2F190F looks on a white background.

## Color Contrast Check

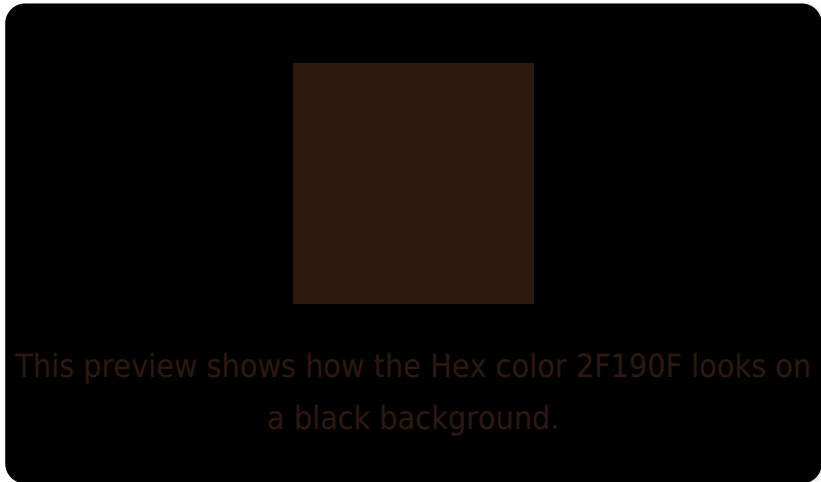
Large Text (above 18pt) WCAG AA ✓ Pass

Any Text WCAG AA ✓ Pass

Large Text (above 18pt) WCAG AAA ✓ Pass

Any Text WCAG AAA ✓ Pass

# Black Background



## Color Contrast Check

Large Text (above 18pt) WCAG AA × Fail

Any Text WCAG AA × Fail

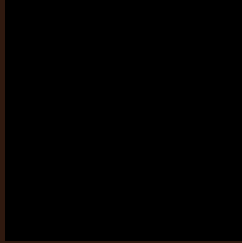
Large Text (above 18pt) WCAG AAA × Fail

Any Text WCAG AAA × Fail

If you want to check with other color combinations, try the [Color Contrast Checker](#).



## Hex 2F190F Background



This preview shows how black text looks on a background with the Hex color 2F190F.

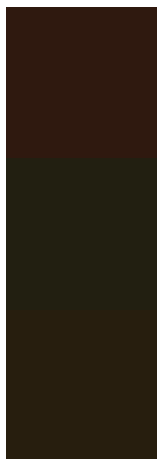


This preview shows how white text looks on a background with the Hex color 2F190F.

# Color Blindness Simulation

Color vision deficiency is a very complex topic, and I could not describe the different causes any better than Wikipedia does, so if you want to learn more, you should check out their [article about color blindness](#).

## Dichromacy



**Original Color**  
2F190F

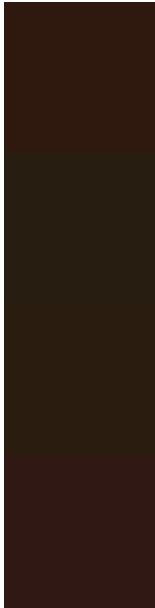
**Protanopia**  
221F11

**Deuteranopia**  
271E0E



**Tritanopia**  
301819

# Trichromacy



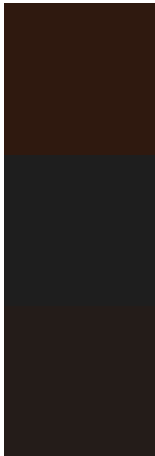
**Original Color**  
2F190F

**Protanomaly**  
271D10

**Deuteranomaly**  
2A1C0E

**Tritanomaly**  
301815

# Monochromacy



**Original Color**  
2F190F

**Achromatopsia**  
1E1E1E

**Achromatomaly**  
241C19

# CSS Examples

## Text

The CSS property to change the color of the text to Hex 2F190F is called "color". The color property can be set on classes, ids or directly on the HTML element.

This example shows how text in the color #2F190F looks like.

```
.text, #text, p{  
    color:#2F190F  
}
```

If you want to add a text shadow in that color use the text-shadow property, you can generate a text shadow directly with our [CSS Text Shadow Generator](#).

Here you see how black text with a 4 pixel #2F190F colored shadow looks like.

```
.shadow{ text-shadow: 4px 4px 2px #2F190F
}
```

## Border

The CSS property to change the border of an element to Hex 2F190F is called "border". The border property can be set on classes, ids or directly on the HTML element.

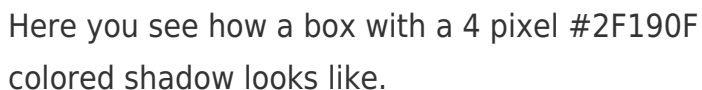
This example shows the color as border, it can be applied via the CSS property "border" or "border-color".

```
.border, #border, table{ border:4px solid
#2F190F }
```

If only the border color should be changed use the property `border-color`.

```
.border{ border-color:#2F190F }
```

If you want to add a box shadow in that color use:



Here you see how a box with a 4 pixel #2F190F colored shadow looks like.

```
.boxshadow{ -moz-box-shadow:4px 4px 4px  
4px #2F190F; -webkit-box-shadow:4px 4px  
4px 4px #2F190F; box-shadow:4px 4px 4px  
4px #2F190F }
```

# Background

The CSS property to change the background color of an element to Hex 2F190F is called "background". The background property can be set on classes, ids or directly on the HTML element.

```
.background, #background, body{  
background:#2F190F }
```

If only the background color should be changed can be used:

```
.background{ background-color:#2F190F }
```

This example shows the color as background, it is applied via the CSS property "background".

To optimize and compress your CSS code, you can use our [online CSS compressor and optimizer](#) based on csstidy. If you want to create a linear or radial gradient as background or border, check our [CSS Gradient Generator](#).



# Hey! You found this booklet interesting? Support Converting Colors with the new Membership Option!

The pro membership hides all ads, plus gives you double the colors in the color bucket, and more awesome pro features!

**[Learn more, Memberships starting at \\$2.50/m!](#)**

**Follow me  
on Twitter!**

@ConvertingColor