

Converting Colors

Hex(301203)

Have a look what the booklet for
Hex(301203) contains.

Hex(301203)	3
<i>Conversions</i>	4
<i>Details</i>	6
<i>Harmonies</i>	11
<i>Previews</i>	23
<i>Color Blindness Simulation</i>	26
<i>CSS Examples</i>	29

Color

Hex(301203)

Conversions

Conversions Part 1

Format	Color
Hex	301203
RGB	48, 18, 3
RGB Percent	19%, 7%, 1%
CMY	0.8118, 0.9294, 0.9882
CMYK	0.00, 0.63, 0.94, 0.81
HSL	20°, 88%, 10%
HSV	20°, 94%, 19%
XYZ	1.4517, 1.0676, 0.2157
YIQ	25.2600, 22.6950, 1.6950

Conversions

Conversions Part 2

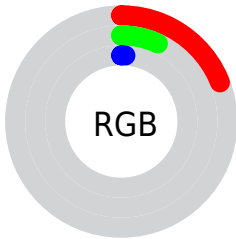
Format	Color
RYB	48, 26, 3
Decimal	3150339
CIELab	9.54, 13.96, 13.37
CIELCh	10, 19.327, 43.757
Yxy	1.0676, 0.5308, 0.3903
Android (android.graphics.Color)	4281340419 (0xFF301203)
YUV	25.2600, -10.9742, 19.9430
Hunter-Lab	10.3323, 6.9973, 5.9949

Details

The Hex color **301203** is a dark color, and the websafe version is hex **330000**. A complement of this color would be **032130**, and the grayscale version is **191919**.

A 20% lighter version of the original color is **603D32**, and **000000** is the 20% darker color. If you saturate the color by 10%, you get **301000**, and if you desaturate by 10%, it is **301508**.

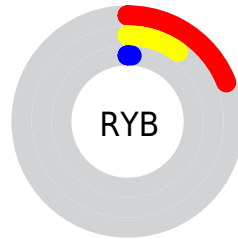
Distribution



Red (19%)

Green (7%)

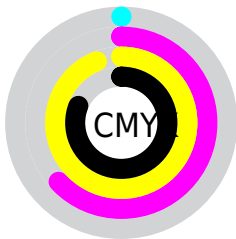
Blue (1%)



Red (19%)

Yellow (10%)

Blue (1%)

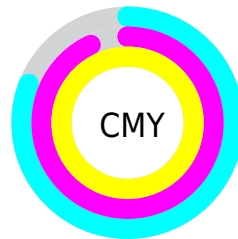


Cyan (0%)

Magenta (63%)

Yellow (94%)

Black (81%)



Cyan (81%)

Magenta (93%)

Yellow (99%)

Brightness & Saturation Gradients

These gradients show how the Hex color 301203 changes by changing the brightness by 10 percent. The first figure shows a shift by +10% for each color and the second figure -10%.

Similar to the brightness gradients but the following saturation gradients show a change of the Hex color 301203 by changing the saturation by 10% instead.

 301203

 301203

 FFF4E4

 190001

 603D32

 000000

 7A5448

 946D60

 B08679

 CCA092

 E8BBAD

 FFD7C8

 301203

 301203

■ 301000

■ 301508

■ 30180D

■ 301C11

■ 301F16

■ 30221B

■ 302520

■ 302825

■ 302C29

■ 302F2E

Harmonies

Analogous

The Analogous color harmony consists of three colors that are next to each other on the color wheel.



320F15



301203



281700

Triad

The Triadic color harmony groups three colors that are evenly spaced from another and form a triangle on the color wheel.



301203



002113



0D1A34

Complementary

The Complementary color scheme is a pair of colors which are on the opposite of each other on the color wheel.



301203



032130

Split Complementary

Split-complementary colors differ from the complementary color scheme. The scheme consists of three colors, the original color and two neighbors of the complement color.



001E33



301203



002120

Square

The Square scheme is like the rectangle color scheme, but the four colors are evenly spaced on the color wheel.



301203



0F1F00



00202C



23152D

Rectangle

The Rectangle color scheme consists of four colors that form a rectangle on the color wheel.



301203



211A00



00202C



011C34

Sweetspot

The Sweet Spot groups the original color and five complimentary colors.



301203



3D322C



300321



1F1814



9E9E9E



1F1F1F

Same Dimension

The Same Dimension uses a secret algorithm to generate beautiful new colors.



301203



3D1400



302903



171515



571D00



D64700

Inverse Universe

The Inverse Universe completely reimagines the original color for something new.



032130



00293D



030B30



151617



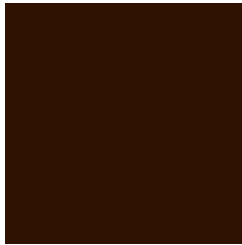
003A57



008FD6

Previews

White Background



This preview shows how the Hex color 301203 looks on a white background.

Color Contrast Check

Large Text (above 18pt) WCAG AA ✓ Pass

Any Text WCAG AA ✓ Pass

Large Text (above 18pt) WCAG AAA ✓ Pass

Any Text WCAG AAA ✓ Pass

Black Background



Color Contrast Check

Large Text (above 18pt) WCAG AA × Fail

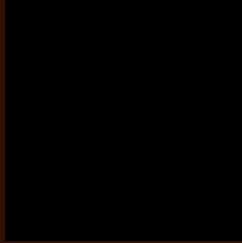
Any Text WCAG AA × Fail

Large Text (above 18pt) WCAG AAA × Fail

Any Text WCAG AAA × Fail

If you want to check with other color combinations, try the [Color Contrast Checker](#).

Hex 301203 Background



This preview shows how black text looks on a background with the Hex color 301203.

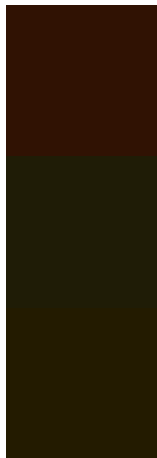


This preview shows how white text looks on a background with the Hex color 301203.

Color Blindness Simulation

Color vision deficiency is a very complex topic, and I could not describe the different causes any better than Wikipedia does, so if you want to learn more, you should check out their [article about color blindness](#).

Dichromacy



Original Color
301203

Protanopia
1F1C06

Deuteranopia
231B00



Tritanopia
301112

Trichromacy



Original Color
301203

Protanomaly
251805

Deuteranomaly
281801

Tritanomaly
30110D

Monochromacy



Original Color
301203

Achromatopsia
191919

Achromatomaly
211611

CSS Examples

Text

The CSS property to change the color of the text to Hex 301203 is called "color". The color property can be set on classes, ids or directly on the HTML element.

This example shows how text in the color #301203 looks like.

```
.text, #text, p{  
    color:#301203  
}
```

If you want to add a text shadow in that color use the text-shadow property, you can generate a text shadow directly with our [CSS Text Shadow Generator](#).

Here you see how black text with a 4 pixel #301203 colored shadow looks like.

```
.shadow{ text-shadow: 4px 4px 2px #301203
}
```

Border

The CSS property to change the border of an element to Hex 301203 is called "border". The border property can be set on classes, ids or directly on the HTML element.

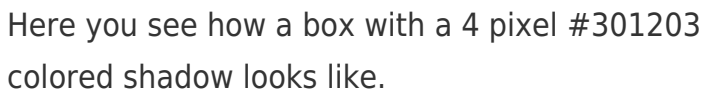
This example shows the color as border, it can be applied via the CSS property "border" or "border-color".

```
.border, #border, table{ border:4px solid
#301203 }
```

If only the border color should be changed use the property `border-color`.

```
.border{ border-color:#301203 }
```

If you want to add a box shadow in that color use:



Here you see how a box with a 4 pixel #301203 colored shadow looks like.

```
.boxshadow{ -moz-box-shadow:4px 4px 4px  
4px #301203; -webkit-box-shadow:4px 4px  
4px 4px #301203; box-shadow:4px 4px 4px  
4px #301203 }
```

Background

The CSS property to change the background color of an element to Hex 301203 is called "background". The background property can be set on classes, ids or directly on the HTML element.

```
.background, #background, body{  
background:#301203 }
```

If only the background color should be changed can be used:

```
.background{ background-color:#301203 }
```

This example shows the color as background, it is applied via the CSS property "background".

To optimize and compress your CSS code, you can use our [online CSS compressor and optimizer](#) based on csstidy. If you want to create a linear or radial gradient as background or border, check our [CSS Gradient Generator](#).

Hey! You found this booklet interesting? Support Converting Colors with the new Membership Option!

The pro membership hides all ads, plus gives you double the colors in the color bucket, and more awesome pro features!

[Learn more, Memberships starting at \\$2.50/m!](#)

**Follow me
on Twitter!**

@ConvertingColor