

Converting Colors

Hex(30170E)

Have a look what the booklet for
Hex(30170E) contains.

Hex(30170E)	3
<i>Conversions</i>	4
<i>Details</i>	6
<i>Harmonies</i>	11
<i>Previews</i>	23
<i>Color Blindness Simulation</i>	26
<i>CSS Examples</i>	29

Color

Hex(30170E)

Conversions

Conversions Part 1

Format	Color
Hex	30170E
RGB	48, 23, 14
RGB Percent	19%, 9%, 5%
CMY	0.8118, 0.9098, 0.9451
CMYK	0.00, 0.52, 0.71, 0.81
HSL	16°, 55%, 12%
HSV	16°, 71%, 19%
XYZ	1.6046, 1.2729, 0.5766
YIQ	29.4490, 17.7890, 2.5010

Conversions

Conversions Part 2

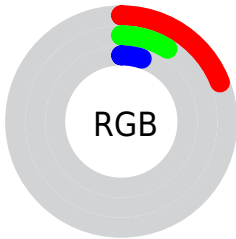
Format	Color
R_{YB}	48, 26, 14
Decimal	3151630
CIE _{Lab}	11.08, 11.52, 10.86
CIE _{LCh}	11, 15.837, 43.315
Yxy	1.2729, 0.4646, 0.3685
Android (android.graphics.Color)	4281341710 (0xFF30170E)
YUV	29.4490, -7.6164, 16.2692
Hunter-Lab	11.2822, 5.6430, 4.8675

Details

The Hex color **30170E** is a dark color, and the websafe version is hex **330000**. A complement of this color would be **0E2730**, and the grayscale version is **1E1E1E**.

A 20% lighter version of the original color is **604239**, and **000000** is the 20% darker color. If you saturate the color by 10%, you get **301309**, and if you desaturate by 10%, it is **301B13**.

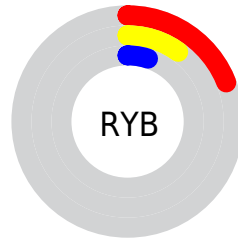
Distribution



Red (19%)

Green (9%)

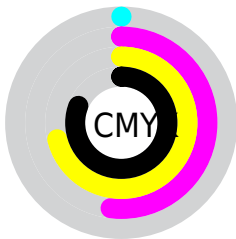
Blue (5%)



Red (19%)

Yellow (10%)

Blue (5%)

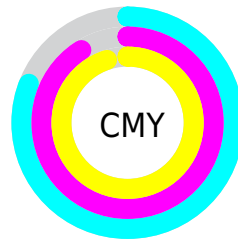


Cyan (0%)

Magenta (52%)

Yellow (71%)

Black (81%)



Cyan (81%)

Magenta (91%)

Yellow (95%)

Brightness & Saturation Gradients

These gradients show how the Hex color 30170E changes by changing the brightness by 10 percent. The first figure shows a shift by +10% for each color and the second figure -10%.

Similar to the brightness gradients but the following saturation gradients show a change of the Hex color 30170E by changing the saturation by 10% instead.

 30170E

 30170E

 FFFAEE

 1B0000

 604239

 000000

 795A50

 947268

 AF8C81

 CAA69B

 E7C1B6

 FFDDD1

 30170E

 30170E

■ 301309

■ 301B13

■ 301004

■ 301E18

■ 300D00

■ 30221C

■ 302521

■ 302926

■ 302C2B

■ 303030

■ 303334

■ 303739

Harmonies

Analogous

The Analogous color harmony consists of three colors that are next to each other on the color wheel.



321519



30170E



2A1B04

Triad

The Triadic color harmony groups three colors that are evenly spaced from another and form a triangle on the color wheel.



30170E



042317



141D33

Complementary

The Complementary color scheme is a pair of colors which are on the opposite of each other on the color wheel.



30170E



0E2730

Split Complementary

Split-complementary colors differ from the complementary color scheme. The scheme consists of three colors, the original color and two neighbors of the complement color.



002032



30170E



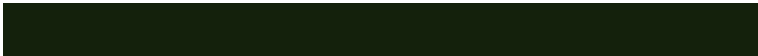
002322

Square

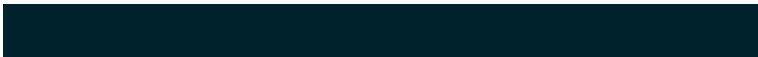
The Square scheme is like the rectangle color scheme, but the four colors are evenly spaced on the color wheel.



30170E



14210C



00222C



25192D

Rectangle

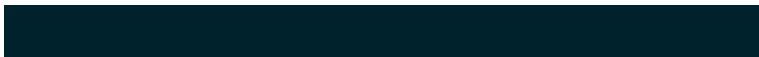
The Rectangle color scheme consists of four colors that form a rectangle on the color wheel.



30170E



241D02



00222C



0D1E33

Sweetspot

The Sweet Spot groups the original color and five complimentary colors.



30170E



3D3430



300E27



1F1917



9E9E9E



1F1F1F

Same Dimension

The Same Dimension uses a secret algorithm to generate beautiful new colors.



30170E



3D1709



30270E



171515



571700



D63900

Inverse Universe

The Inverse Universe completely reimagines the original color for something new.



0E2730



092F3D



0E1630



151617



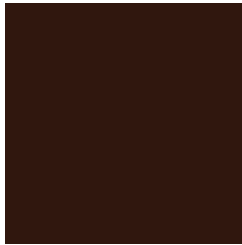
004057



009ED6

Previews

White Background



This preview shows how the Hex color 30170E looks on a white background.

Color Contrast Check

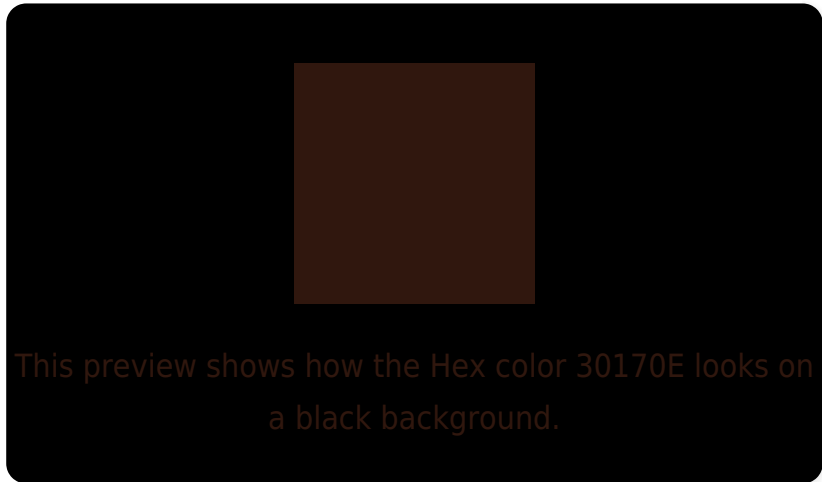
Large Text (above 18pt) WCAG AA ✓ Pass

Any Text WCAG AA ✓ Pass

Large Text (above 18pt) WCAG AAA ✓ Pass

Any Text WCAG AAA ✓ Pass

Black Background



Color Contrast Check

Large Text (above 18pt) WCAG AA × Fail

Any Text WCAG AA × Fail

Large Text (above 18pt) WCAG AAA × Fail

Any Text WCAG AAA × Fail

If you want to check with other color combinations, try the [Color Contrast Checker](#).

Hex 30170E Background



This preview shows how black text looks on a background with the Hex color 30170E.



This preview shows how white text looks on a background with the Hex color 30170E.

Color Blindness Simulation

Color vision deficiency is a very complex topic, and I could not describe the different causes any better than Wikipedia does, so if you want to learn more, you should check out their [article about color blindness](#).

Dichromacy



Original Color
30170E

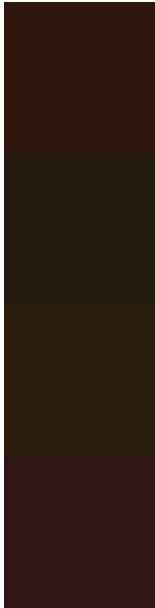
Protanopia
211E10

Deuteranopia
261D0D



Tritanopia
301617

Trichromacy



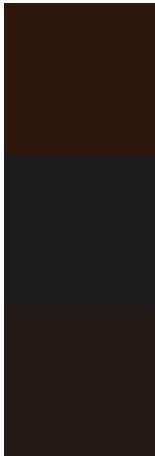
Original Color
30170E

Protanomaly
261B0F

Deuteranomaly
2A1B0D

Tritanomaly
301614

Monochromacy



Original Color
30170E

Achromatopsia
1D1D1D

Achromatomaly
241B18

CSS Examples

Text

The CSS property to change the color of the text to Hex 30170E is called "color". The color property can be set on classes, ids or directly on the HTML element.

This example shows how text in the color #30170E looks like.

```
.text, #text, p{  
    color:#30170E  
}
```

If you want to add a text shadow in that color use the text-shadow property, you can generate a text shadow directly with our [CSS Text Shadow Generator](#).

Here you see how black text with a 4 pixel #30170E colored shadow looks like.

```
.shadow{ text-shadow: 4px 4px 2px #30170E
}
```

Border

The CSS property to change the border of an element to Hex 30170E is called "border". The border property can be set on classes, ids or directly on the HTML element.

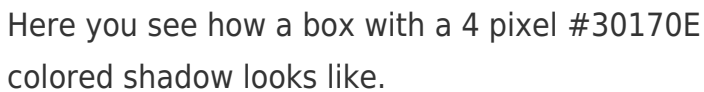
This example shows the color as border, it can be applied via the CSS property "border" or "border-color".

```
.border, #border, table{ border:4px solid
#30170E }
```

If only the border color should be changed use the property `border-color`.

```
.border{ border-color:#30170E }
```

If you want to add a box shadow in that color use:



Here you see how a box with a 4 pixel #30170E colored shadow looks like.

```
.boxshadow{ -moz-box-shadow:4px 4px 4px  
4px #30170E; -webkit-box-shadow:4px 4px  
4px 4px #30170E; box-shadow:4px 4px 4px  
4px #30170E }
```

Background

The CSS property to change the background color of an element to Hex 30170E is called "background". The background property can be set on classes, ids or directly on the HTML element.

```
.background, #background, body{  
background:#30170E }
```

If only the background color should be changed can be used:

```
.background{ background-color:#30170E }
```

This example shows the color as background, it is applied via the CSS property "background".

To optimize and compress your CSS code, you can use our [online CSS compressor and optimizer](#) based on csstidy. If you want to create a linear or radial gradient as background or border, check our [CSS Gradient Generator](#).

Hey! You found this booklet interesting? Support Converting Colors with the new Membership Option!

The pro membership hides all ads, plus gives you double the colors in the color bucket, and more awesome pro features!

[Learn more, Memberships starting at \\$2.50/m!](#)

**Follow me
on Twitter!**

@ConvertingColor