

Converting Colors

Hex(30190F)

Have a look what the booklet for
Hex(30190F) contains.

Hex(30190F)	3
<i>Conversions</i>	4
<i>Details</i>	6
<i>Harmonies</i>	11
<i>Previews</i>	23
<i>Color Blindness Simulation</i>	26
<i>CSS Examples</i>	29

Color

Hex(30190F)

Conversions

Conversions Part 1

Format	Color
Hex	30190F
RGB	48, 25, 15
RGB Percent	19%, 10%, 6%
CMY	0.8118, 0.9020, 0.9412
CMYK	0.00, 0.48, 0.69, 0.81
HSL	18°, 52%, 12%
HSV	18°, 69%, 19%
XYZ	1.6528, 1.3581, 0.6270
YIQ	30.7370, 16.9180, 1.7660

Conversions

Conversions Part 2

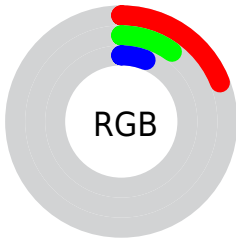
Format	Color
RYB	48, 29, 15
Decimal	3152143
CIELab	11.68, 10.24, 11.16
CIElCh	12, 15.151, 47.459
Yxy	1.3581, 0.4543, 0.3733
Android (android.graphics.Color)	4281342223 (0xFF30190F)
YUV	30.7370, -7.7583, 15.1397
Hunter-Lab	11.6539, 4.9210, 4.9680

Details

The Hex color **30190F** is a dark color, and the websafe version is hex **330000**. A complement of this color would be **0F2630**, and the grayscale version is **1F1F1F**.

A 20% lighter version of the original color is **60443A**, and **000000** is the 20% darker color. If you saturate the color by 10%, you get **30160A**, and if you desaturate by 10%, it is **301C14**.

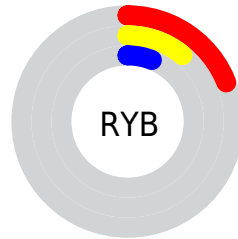
Distribution



Red (19%)

Green (10%)

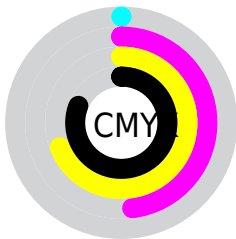
Blue (6%)



Red (19%)

Yellow (11%)

Blue (6%)

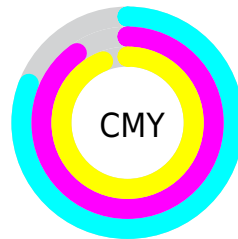


Cyan (0%)

Magenta (48%)

Yellow (69%)

Black (81%)



Cyan (81%)

Magenta (90%)

Yellow (94%)

Brightness & Saturation Gradients

These gradients show how the Hex color 30190F changes by changing the brightness by 10 percent. The first figure shows a shift by +10% for each color and the second figure -10%.

Similar to the brightness gradients but the following saturation gradients show a change of the Hex color 30190F by changing the saturation by 10% instead.

 30190F

 30190F

 FFFCEF

 1B0000

 60443A

 000000

 795C50

 937569

 AE8E82

 CAA99C

 E6C4B7

 FFE0D2

 30190F

 30190F

■ 30160A

■ 301C14

■ 301205

■ 302019

■ 300F01

■ 30231D

■ 300F00

■ 302622

■ 302A27

■ 302D2C

■ 303031

■ 303435

■ 30373A

Harmonies

Analogous

The Analogous color harmony consists of three colors that are next to each other on the color wheel.



331719



30190F



291D06

Triad

The Triadic color harmony groups three colors that are evenly spaced from another and form a triangle on the color wheel.



30190F



04241A



191E33

Complementary

The Complementary color scheme is a pair of colors which are on the opposite of each other on the color wheel.



30190F



0F2630

Split Complementary

Split-complementary colors differ from the complementary color scheme. The scheme consists of three colors, the original color and two neighbors of the complement color.



032133



30190F



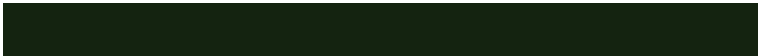
002425

Square

The Square scheme is like the rectangle color scheme, but the four colors are evenly spaced on the color wheel.



30190F



142310



00232E



271A2D

Rectangle

The Rectangle color scheme consists of four colors that form a rectangle on the color wheel.



30190F



231F06



00232E



131F33

Sweetspot

The Sweet Spot groups the original color and five complimentary colors.



30190F



3D3430



300F26



1F1917



9E9E9E



1F1F1F

Same Dimension

The Same Dimension uses a secret algorithm to generate beautiful new colors.



30190F



3D1A0A



30290F



171515



571A00



D64100

Inverse Universe

The Inverse Universe completely reimagines the original color for something new.



0F2630



0A2E3D



0F1630



151617



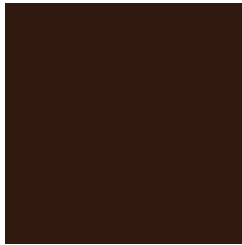
003C57



0095D6

Previews

White Background



This preview shows how the Hex color 30190F looks on a white background.

Color Contrast Check

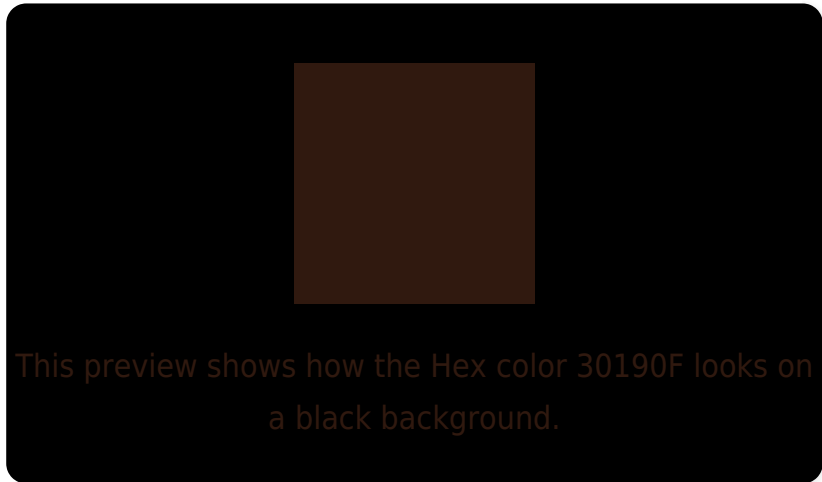
Large Text (above 18pt) WCAG AA ✓ Pass

Any Text WCAG AA ✓ Pass

Large Text (above 18pt) WCAG AAA ✓ Pass

Any Text WCAG AAA ✓ Pass

Black Background



Color Contrast Check

Large Text (above 18pt) WCAG AA × Fail

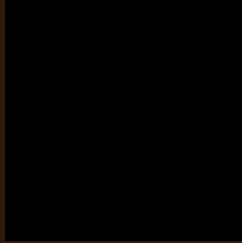
Any Text WCAG AA × Fail

Large Text (above 18pt) WCAG AAA × Fail

Any Text WCAG AAA × Fail

If you want to check with other color combinations, try the [Color Contrast Checker](#).

Hex 30190F Background



This preview shows how black text looks on a background with the Hex color 30190F.

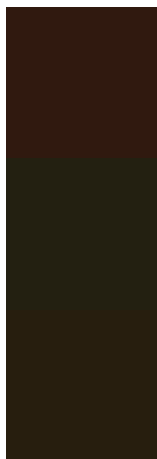


This preview shows how white text looks on a background with the Hex color 30190F.

Color Blindness Simulation

Color vision deficiency is a very complex topic, and I could not describe the different causes any better than Wikipedia does, so if you want to learn more, you should check out their [article about color blindness](#).

Dichromacy



Original Color
30190F

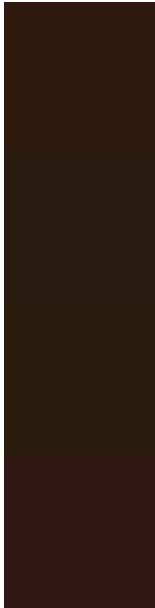
Protanopia
232011

Deuteranopia
271E0E



Tritanopia
311819

Trichromacy



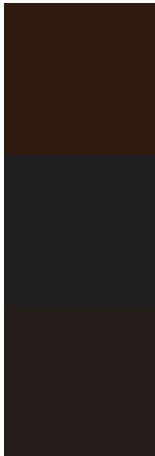
Original Color
30190F

Protanomaly
281D10

Deuteranomaly
2A1C0E

Tritanomaly
311815

Monochromacy



Original Color
30190F

Achromatopsia
1F1F1F

Achromatomaly
251D19

CSS Examples

Text

The CSS property to change the color of the text to Hex 30190F is called "color". The color property can be set on classes, ids or directly on the HTML element.

This example shows how text in the color #30190F looks like.

```
.text, #text, p{  
    color:#30190F  
}
```

If you want to add a text shadow in that color use the text-shadow property, you can generate a text shadow directly with our [CSS Text Shadow Generator](#).

Here you see how black text with a 4 pixel #30190F colored shadow looks like.

```
.shadow{ text-shadow: 4px 4px 2px #30190F  
}
```

Border

The CSS property to change the border of an element to Hex 30190F is called "border". The border property can be set on classes, ids or directly on the HTML element.

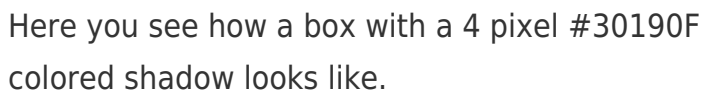
This example shows the color as border, it can be applied via the CSS property "border" or "border-color".

```
.border, #border, table{ border:4px solid  
#30190F }
```

If only the border color should be changed use the property `border-color`.

```
.border{ border-color:#30190F }
```

If you want to add a box shadow in that color use:



Here you see how a box with a 4 pixel #30190F colored shadow looks like.

```
.boxshadow{ -moz-box-shadow:4px 4px 4px  
4px #30190F; -webkit-box-shadow:4px 4px  
4px 4px #30190F; box-shadow:4px 4px 4px  
4px #30190F }
```

Background

The CSS property to change the background color of an element to Hex 30190F is called "background". The background property can be set on classes, ids or directly on the HTML element.

```
.background, #background, body{  
background:#30190F }
```

If only the background color should be changed can be used:

```
.background{ background-color:#30190F }
```

This example shows the color as background, it is applied via the CSS property "background".

To optimize and compress your CSS code, you can use our [online CSS compressor and optimizer](#) based on csstidy. If you want to create a linear or radial gradient as background or border, check our [CSS Gradient Generator](#).

Hey! You found this booklet interesting? Support Converting Colors with the new Membership Option!

The pro membership hides all ads, plus gives you double the colors in the color bucket, and more awesome pro features!

[Learn more, Memberships starting at \\$2.50/m!](#)

**Follow me
on Twitter!**

@ConvertingColor