

Converting Colors

Hex(301C10)

Have a look what the booklet for
Hex(301C10) contains.

| | |
|--|----|
| Hex(301C10) | 3 |
| <i>Conversions</i> | 4 |
| <i>Details</i> | 6 |
| <i>Harmonies</i> | 11 |
| <i>Previews</i> | 23 |
| <i>Color Blindness Simulation</i> | 26 |
| <i>CSS Examples</i> | 29 |

Color

Hex(301C10)

Conversions

Conversions Part 1

| Format | Color |
|-------------|--------------------------|
| Hex | 301C10 |
| RGB | 48, 28, 16 |
| RGB Percent | 19%, 11%, 6% |
| CMY | 0.8118, 0.8902, 0.9373 |
| CMYK | 0.00, 0.42, 0.67, 0.81 |
| HSL | 22°, 50%, 13% |
| HSV | 22°, 67%, 19% |
| XYZ | 1.7277, 1.4963, 0.6880 |
| YIQ | 32.6120, 15.7720, 0.5080 |

Conversions

Conversions Part 2

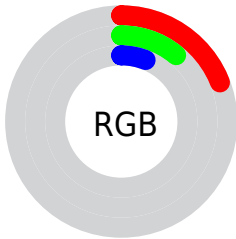
| Format | Color |
|-------------------------------------|------------------------------|
| RYB | 48, 35, 16 |
| Decimal | 3152912 |
| CIELab | 12.58, 8.26, 11.86 |
| CIELCh | 13, 14.449, 55.148 |
| Yxy | 1.4963, 0.4416, 0.3825 |
| Android (android.graphics.Color) | 4281342992 (0xFF301C10) |
| YUV | 32.6120, -8.1897, 13.4953 |
| Hunter-Lab | 12.2323, 3.8049, 5.2281 |

Details

The Hex color **301C10** is a dark color, and the websafe version is hex **333333**. A complement of this color would be **102430**, and the grayscale version is **212121**.

A 20% lighter version of the original color is **60483A**, and **000000** is the 20% darker color. If you saturate the color by 10%, you get **30190B**, and if you desaturate by 10%, it is **301F15**.

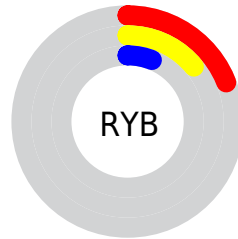
Distribution



Red (19%)

Green (11%)

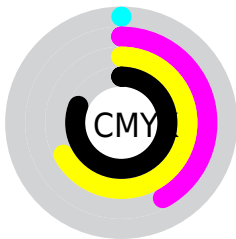
Blue (6%)



Red (19%)

Yellow (14%)

Blue (6%)

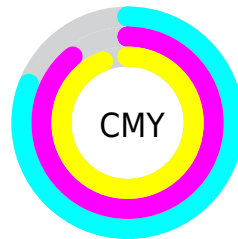


Cyan (0%)

Magenta (42%)

Yellow (67%)

Black (81%)



Cyan (81%)

Magenta (89%)

Yellow (94%)

Brightness & Saturation Gradients

These gradients show how the Hex color 301C10 changes by changing the brightness by 10 percent. The first figure shows a shift by +10% for each color and the second figure -10%.

Similar to the brightness gradients but the following saturation gradients show a change of the Hex color 301C10 by changing the saturation by 10% instead.

 301C10

 301C10

 FFFFF0

 1B0300

 60483A

 000000

 795F51

 93786A

 AE9283

 CAAC9D

 E6C8B8

 FFE4D3

 301C10

 301C10

■ 30190B

■ 301F15

■ 301606

■ 30221A

■ 301302

■ 30251E

■ 301200

■ 302823

■ 302B28

■ 302E2D

■ 303132

■ 303436

■ 30373B

Harmonies

Analogous

The Analogous color harmony consists of three colors that are next to each other on the color wheel.



341919



301C10



29200A

Triad

The Triadic color harmony groups three colors that are evenly spaced from another and form a triangle on the color wheel.



301C10



04261F



1F1F33

Complementary

The Complementary color scheme is a pair of colors which are on the opposite of each other on the color wheel.



301C10



102430

Split Complementary

Split-complementary colors differ from the complementary color scheme. The scheme consists of three colors, the original color and two neighbors of the complement color.



0D2234



301C10



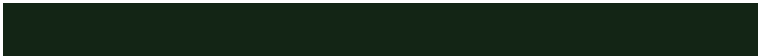
002629

Square

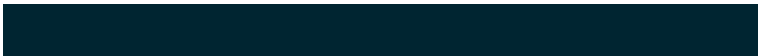
The Square scheme is like the rectangle color scheme, but the four colors are evenly spaced on the color wheel.



301C10



132515



002531



2C1B2C

Rectangle

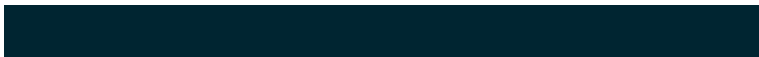
The Rectangle color scheme consists of four colors that form a rectangle on the color wheel.



301C10



22220B



002531



1A2034

Sweetspot

The Sweet Spot groups the original color and five complimentary colors.



301C10



3D3631



301024



1F1A17



9E9E9E



1F1F1F

Same Dimension

The Same Dimension uses a secret algorithm to generate beautiful new colors.



301C10



3D1F0C



302C10



171615



572100



D65000

Inverse Universe

The Inverse Universe completely reimagines the original color for something new.



102430



0C2B3D



101430



151617



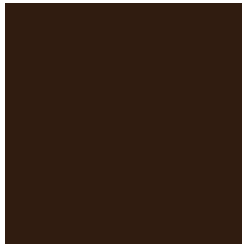
003657



0086D6

Previews

White Background



This preview shows how the Hex color 301C10 looks on a white background.

Color Contrast Check

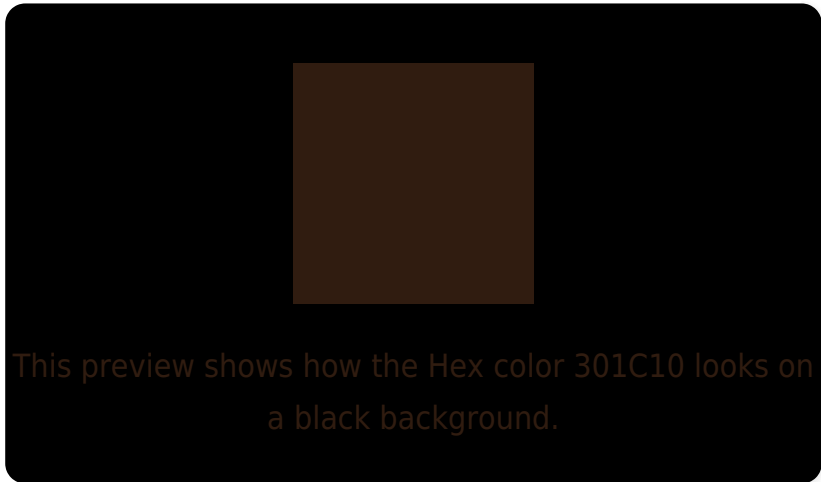
Large Text (above 18pt) WCAG AA ✓ Pass

Any Text WCAG AA ✓ Pass

Large Text (above 18pt) WCAG AAA ✓ Pass

Any Text WCAG AAA ✓ Pass

Black Background



Color Contrast Check

Large Text (above 18pt) WCAG AA × Fail

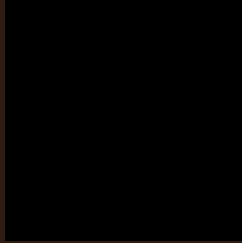
Any Text WCAG AA × Fail

Large Text (above 18pt) WCAG AAA × Fail

Any Text WCAG AAA × Fail

If you want to check with other color combinations, try the [Color Contrast Checker](#).

Hex 301C10 Background



This preview shows how black text looks on a background with the Hex color 301C10.

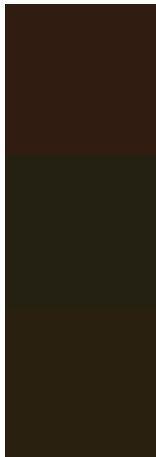


This preview shows how white text looks on a background with the Hex color 301C10.

Color Blindness Simulation

Color vision deficiency is a very complex topic, and I could not describe the different causes any better than Wikipedia does, so if you want to learn more, you should check out their [article about color blindness](#).

Dichromacy



Original Color
301C10

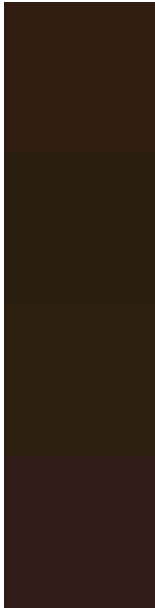
Protanopia
252112

Deuteranopia
29200F



Tritanopia
311B1C

Trichromacy



Original Color
301C10

Protanomaly
291F11

Deuteranomaly
2C1F0F

Tritanomaly
311B18

Monochromacy



Original Color
301C10

Achromatopsia
212121

Achromatomaly
261F1B

CSS Examples

Text

The CSS property to change the color of the text to Hex 301C10 is called "color". The color property can be set on classes, ids or directly on the HTML element.

This example shows how text in the color #301C10 looks like.

```
.text, #text, p{  
    color:#301C10  
}
```

If you want to add a text shadow in that color use the text-shadow property, you can generate a text shadow directly with our [CSS Text Shadow Generator](#).

Here you see how black text with a 4 pixel #301C10 colored shadow looks like.

```
.shadow{ text-shadow: 4px 4px 2px #301C10
}
```

Border

The CSS property to change the border of an element to Hex 301C10 is called "border". The border property can be set on classes, ids or directly on the HTML element.

This example shows the color as border, it can be applied via the CSS property "border" or "border-color".

```
.border, #border, table{ border:4px solid
#301C10 }
```

If only the border color should be changed use the property `border-color`.

```
.border{ border-color:#301C10 }
```

If you want to add a box shadow in that color use:

Here you see how a box with a 4 pixel #301C10 colored shadow looks like.

```
.boxshadow{ -moz-box-shadow:4px 4px 4px  
4px #301C10; -webkit-box-shadow:4px 4px  
4px 4px #301C10; box-shadow:4px 4px 4px  
4px #301C10 }
```

Background

The CSS property to change the background color of an element to Hex 301C10 is called "background". The background property can be set on classes, ids or directly on the HTML element.

```
.background, #background, body{  
background:#301C10 }
```

If only the background color should be changed can be used:

```
.background{ background-color:#301C10 }
```

This example shows the color as background, it is applied via the CSS property "background".

To optimize and compress your CSS code, you can use our [online CSS compressor and optimizer](#) based on csstidy. If you want to create a linear or radial gradient as background or border, check our [CSS Gradient Generator](#).

Hey! You found this booklet interesting? Support Converting Colors with the new Membership Option!

The pro membership hides all ads, plus gives you double the colors in the color bucket, and more awesome pro features!

[Learn more, Memberships starting at \\$2.50/m!](#)

**Follow me
on Twitter!**

@ConvertingColor