

# Converting Colors

Hex(311C0F)

Have a look what the booklet for  
Hex(311C0F) contains.

<b>Hex(311C0F)</b> .....	3
<b><i>Conversions</i></b> .....	4
<b><i>Details</i></b> .....	6
<b><i>Harmonies</i></b> .....	11
<b><i>Previews</i></b> .....	23
<b><i>Color Blindness Simulation</i></b> .....	26
<b><i>CSS Examples</i></b> .....	29

# Color

Hex(311C0F)

# Conversions

## Conversions Part 1

Format	Color
Hex	311C0F
RGB	49, 28, 15
RGB Percent	19%, 11%, 6%
CMY	0.8078, 0.8902, 0.9412
CMYK	0.00, 0.43, 0.69, 0.81
HSL	23°, 53%, 13%
HSV	23°, 69%, 19%
XYZ	1.7681, 1.5180, 0.6517
YIQ	32.7970, 16.6890, 0.4090

# Conversions

## Conversions Part 2

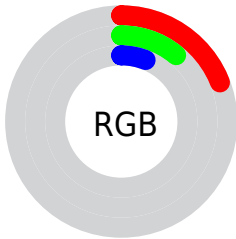
<b>Format</b>	<b>Color</b>
<b>R<sub>YB</sub></b>	49, 36, 15
Decimal	3218447
CIE <sub>Lab</sub>	12.72, 8.68, 12.61
CIE <sub>LCh</sub>	13, 15.311, 55.457
Yxy	1.5180, 0.4490, 0.3855
Android (android.graphics.Color)	4281408527 (0xFF311C0F)
YUV	32.7970, -8.7739, 14.2100
Hunter-Lab	12.3206, 4.0552, 5.4880

# Details

The Hex color **311C0F** is a dark color, and the websafe version is hex **333333**. A complement of this color would be **0F2431**, and the grayscale version is **212121**.

A 20% lighter version of the original color is **61483A**, and **000000** is the 20% darker color. If you saturate the color by 10%, you get **31190A**, and if you desaturate by 10%, it is **311F14**.

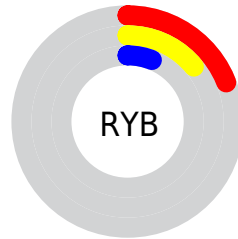
# Distribution



Red (19%)

Green (11%)

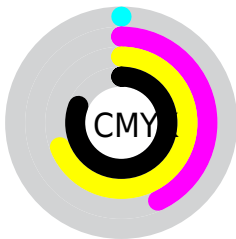
Blue (6%)



Red (19%)

Yellow (14%)

Blue (6%)

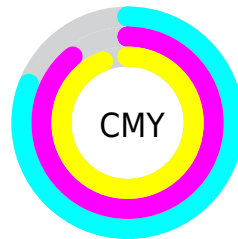


Cyan (0%)

Magenta (43%)

Yellow (69%)

Black (81%)



Cyan (81%)

Magenta (89%)


Yellow (94%)

# Brightness & Saturation Gradients

These gradients show how the Hex color 311C0F changes by changing the brightness by 10 percent. The first figure shows a shift by +10% for each color and the second figure -10%.

Similar to the brightness gradients but the following saturation gradients show a change of the Hex color 311C0F by changing the saturation by 10% instead.



 311C0F

 311C0F

 FFFFEF

 1C0300

 61483A

 000000

 7A5F51


 947869


 AF9282

 CBAC9C

 E8C8B7

 FFE4D2

 311C0F

 311C0F

■ 31190A

■ 311F14

■ 311605

■ 312219

■ 311300

■ 31251E

■ 312823

■ 312B28

■ 312E2C

■ 313131

■ 313436

■ 31373B

# Harmonies

## Analogous

The Analogous color harmony consists of three colors that are next to each other on the color wheel.



351918



311C0F



292009

# Triad

The Triadic color harmony groups three colors that are evenly spaced from another and form a triangle on the color wheel.



311C0F



02261F



1F1F34

# Complementary

The Complementary color scheme is a pair of colors which are on the opposite of each other on the color wheel.



311C0F



0F2431

# Split Complementary

Split-complementary colors differ from the complementary color scheme. The scheme consists of three colors, the original color and two neighbors of the complement color.



0C2336



311C0F



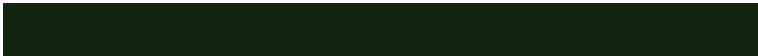
00262A

# Square

The Square scheme is like the rectangle color scheme, but the four colors are evenly spaced on the color wheel.



311C0F



122515



002532



2D1B2D

# Rectangle

The Rectangle color scheme consists of four colors that form a rectangle on the color wheel.



311C0F



23220A



002532



1A2035



# Sweetspot

The Sweet Spot groups the original color and five complimentary colors.



311C0F



403732



310F25



211C19



A1A1A1



212121



# Same Dimension

The Same Dimension uses a secret algorithm to generate beautiful new colors.



311C0F



401F0B



312C0F



1A1817



592200



D95300



# Inverse Universe

The Inverse Universe completely reimagines the original color for something new.



0F2431



0B2C40



0F1431



17191A



003759

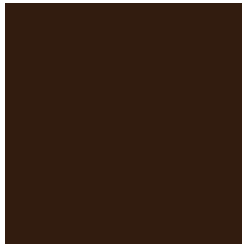


0086D9



# Previews

## White Background



This preview shows how the Hex color 311C0F looks on a white background.

## Color Contrast Check

Large Text (above 18pt) WCAG AA ✓ Pass

Any Text WCAG AA ✓ Pass

Large Text (above 18pt) WCAG AAA ✓ Pass

Any Text WCAG AAA ✓ Pass

# Black Background



## Color Contrast Check

Large Text (above 18pt) WCAG AA × Fail

Any Text WCAG AA × Fail

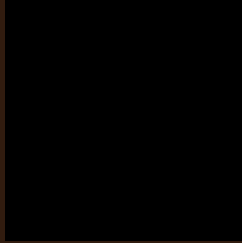
Large Text (above 18pt) WCAG AAA × Fail

Any Text WCAG AAA × Fail

If you want to check with other color combinations, try the [Color Contrast Checker](#).



## Hex 311C0F Background



This preview shows how black text looks on a background with the Hex color 311C0F.

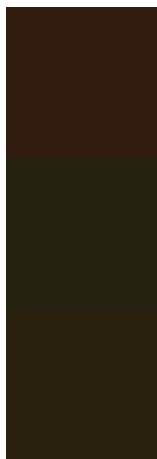


This preview shows how white text looks on a background with the Hex color 311C0F.

# Color Blindness Simulation

Color vision deficiency is a very complex topic, and I could not describe the different causes any better than Wikipedia does, so if you want to learn more, you should check out their [article about color blindness](#).

## Dichromacy



**Original Color**  
311C0F

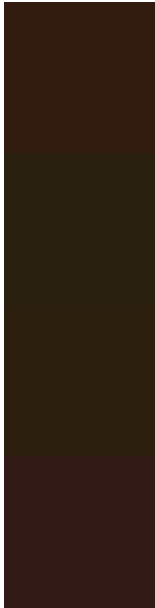
**Protanopia**  
252211

**Deuteranopia**  
2A200E



**Tritanopia**  
321A1C

# Trichromacy



**Original Color**  
311C0F

**Protanomaly**  
292010

**Deuteranomaly**  
2D1F0E

**Tritanomaly**  
321B17

# Monochromacy



**Original Color**  
311C0F

**Achromatopsia**  
212121

**Achromatomaly**  
271F1A

# CSS Examples

## Text

The CSS property to change the color of the text to Hex 311C0F is called "color". The color property can be set on classes, ids or directly on the HTML element.

This example shows how text in the color #311C0F looks like.

```
.text, #text, p{  
    color:#311C0F  
}
```

If you want to add a text shadow in that color use the text-shadow property, you can generate a text shadow directly with our [CSS Text Shadow Generator](#).

Here you see how black text with a 4 pixel #311C0F colored shadow looks like.

```
.shadow{ text-shadow: 4px 4px 2px #311C0F
}
```

## Border

The CSS property to change the border of an element to Hex 311C0F is called "border". The border property can be set on classes, ids or directly on the HTML element.

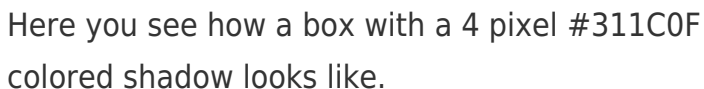
This example shows the color as border, it can be applied via the CSS property "border" or "border-color".

```
.border, #border, table{ border:4px solid
#311C0F }
```

If only the border color should be changed use the property `border-color`.

```
.border{ border-color:#311C0F }
```

If you want to add a box shadow in that color use:



Here you see how a box with a 4 pixel #311C0F colored shadow looks like.

```
.boxshadow{ -moz-box-shadow:4px 4px 4px  
4px #311C0F; -webkit-box-shadow:4px 4px  
4px 4px #311C0F; box-shadow:4px 4px 4px  
4px #311C0F }
```

# Background

The CSS property to change the background color of an element to Hex 311C0F is called "background". The background property can be set on classes, ids or directly on the HTML element.

```
.background, #background, body{  
background:#311C0F }
```

If only the background color should be changed can be used:

```
.background{ background-color:#311C0F }
```

This example shows the color as background, it is applied via the CSS property "background".

To optimize and compress your CSS code, you can use our [online CSS compressor and optimizer](#) based on csstidy. If you want to create a linear or radial gradient as background or border, check our [CSS Gradient Generator](#).



# Hey! You found this booklet interesting? Support Converting Colors with the new Membership Option!

The pro membership hides all ads, plus gives you double the colors in the color bucket, and more awesome pro features!

**[Learn more, Memberships starting at \\$2.50/m!](#)**

**Follow me  
on Twitter!**

@ConvertingColor