

Converting Colors

Hex(32190C)

Have a look what the booklet for
Hex(32190C) contains.

Hex(32190C)	3
<i>Conversions</i>	4
<i>Details</i>	6
<i>Harmonies</i>	11
<i>Previews</i>	23
<i>Color Blindness Simulation</i>	26
<i>CSS Examples</i>	29

Color

Hex(32190C)

Conversions

Conversions Part 1

Format	Color
Hex	32190C
RGB	50, 25, 12
RGB Percent	20%, 10%, 5%
CMY	0.8039, 0.9020, 0.9529
CMYK	0.00, 0.50, 0.76, 0.80
HSL	21°, 61%, 12%
HSV	21°, 76%, 20%
XYZ	1.7294, 1.3999, 0.5269
YIQ	30.9930, 19.0730, 1.2570

Conversions

Conversions Part 2

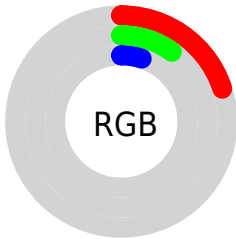
Format	Color
R_{YB}	50, 32, 12
Decimal	3283212
CIE Lab	11.96, 11.00, 13.08
CIE LCh	12, 17.093, 49.925
Yxy	1.3999, 0.4730, 0.3829
Android (android.graphics.Color)	4281473292 (0xFF32190C)
YUV	30.9930, -9.3635, 16.6691
Hunter-Lab	11.8318, 5.3846, 5.6420

Details

The Hex color **32190C** is a dark color, and the websafe version is hex **330000**. A complement of this color would be **0C2532**, and the grayscale version is **1F1F1F**.

A 20% lighter version of the original color is **624437**, and **000000** is the 20% darker color. If you saturate the color by 10%, you get **321607**, and if you desaturate by 10%, it is **321C11**.

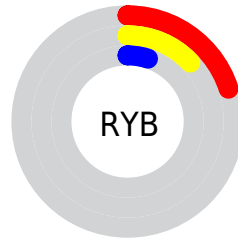
Distribution



Red (20%)

Green (10%)

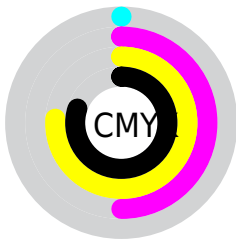
Blue (5%)



Red (20%)

Yellow (13%)

Blue (5%)

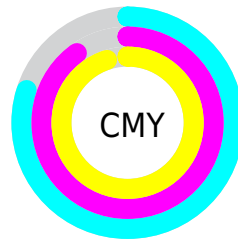


Cyan (0%)

Magenta (50%)

Yellow (76%)

Black (80%)



Cyan (80%)

Magenta (90%)

Yellow (95%)

Brightness & Saturation Gradients

These gradients show how the Hex color 32190C changes by changing the brightness by 10 percent. The first figure shows a shift by +10% for each color and the second figure -10%.

Similar to the brightness gradients but the following saturation gradients show a change of the Hex color 32190C by changing the saturation by 10% instead.

 32190C

 32190C

 FFFDEC

 1D0000

 624437

 000000

 7C5C4E

 967566

 B18E7F

 CDA999

 EAC4B4

 FFE0CF

 32190C

 32190C

■ 321607

■ 321C11

■ 321202

■ 322016

■ 321100

■ 32231B

■ 322620

■ 322925

■ 322D2A

■ 32302F

■ 323334

■ 323739

Harmonies

Analogous

The Analogous color harmony consists of three colors that are next to each other on the color wheel.



351618



32190C



2A1D02

Triad

The Triadic color harmony groups three colors that are evenly spaced from another and form a triangle on the color wheel.



32190C



00251B



1A1E35

Complementary

The Complementary color scheme is a pair of colors which are on the opposite of each other on the color wheel.



32190C



0C2532

Split Complementary

Split-complementary colors differ from the complementary color scheme. The scheme consists of three colors, the original color and two neighbors of the complement color.



002236



32190C



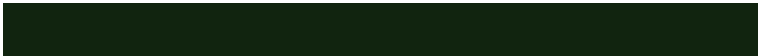
002527

Square

The Square scheme is like the rectangle color scheme, but the four colors are evenly spaced on the color wheel.



32190C



11240F



002431



2A192F

Rectangle

The Rectangle color scheme consists of four colors that form a rectangle on the color wheel.



32190C



232002



002431



121F36

Sweetspot

The Sweet Spot groups the original color and five complimentary colors.



32190C



403631



320C25



211B18



A1A1A1



212121

Same Dimension

The Same Dimension uses a secret algorithm to generate beautiful new colors.



32190C



401A06



322C0C



1A1817



591F00



D94A00

Inverse Universe

The Inverse Universe completely reimagines the original color for something new.



0C2532



062C40



0C1232



17191A



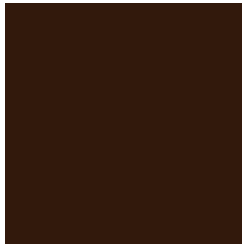
003B59



008FD9

Previews

White Background



This preview shows how the Hex color 32190C looks on a white background.

Color Contrast Check

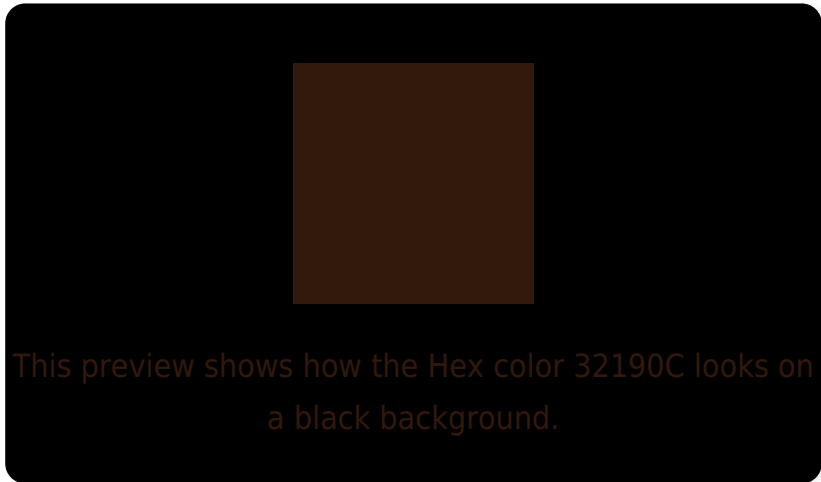
Large Text (above 18pt) WCAG AA ✓ Pass

Any Text WCAG AA ✓ Pass

Large Text (above 18pt) WCAG AAA ✓ Pass

Any Text WCAG AAA ✓ Pass

Black Background



Color Contrast Check

Large Text (above 18pt) WCAG AA × Fail

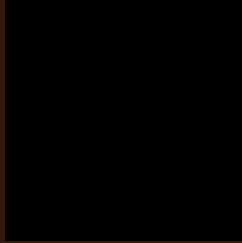
Any Text WCAG AA × Fail

Large Text (above 18pt) WCAG AAA × Fail

Any Text WCAG AAA × Fail

If you want to check with other color combinations, try the [Color Contrast Checker](#).

Hex 32190C Background



This preview shows how black text looks on a background with the Hex color 32190C.



This preview shows how white text looks on a background with the Hex color 32190C.

Color Blindness Simulation

Color vision deficiency is a very complex topic, and I could not describe the different causes any better than Wikipedia does, so if you want to learn more, you should check out their [article about color blindness](#).

Dichromacy



Original Color
32190C

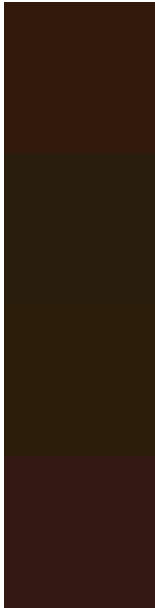
Protanopia
24200E

Deuteranopia
281F0A



Tritanopia
331819

Trichromacy



Original Color
32190C

Protanomaly
291D0D

Deuteranomaly
2C1D0B

Tritanomaly
331814

Monochromacy



Original Color
32190C

Achromatopsia
1F1F1F

Achromatomaly
261D18

CSS Examples

Text

The CSS property to change the color of the text to Hex 32190C is called "color". The color property can be set on classes, ids or directly on the HTML element.

This example shows how text in the color #32190C looks like.

```
.text, #text, p{  
    color:#32190C  
}
```

If you want to add a text shadow in that color use the text-shadow property, you can generate a text shadow directly with our [CSS Text Shadow Generator](#).

Here you see how black text with a 4 pixel #32190C colored shadow looks like.

```
.shadow{ text-shadow: 4px 4px 2px #32190C
}
```

Border

The CSS property to change the border of an element to Hex 32190C is called "border". The border property can be set on classes, ids or directly on the HTML element.

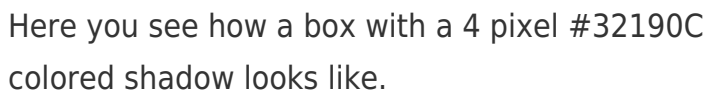
This example shows the color as border, it can be applied via the CSS property "border" or "border-color".

```
.border, #border, table{ border:4px solid
#32190C }
```

If only the border color should be changed use the property `border-color`.

```
.border{ border-color:#32190C }
```

If you want to add a box shadow in that color use:



Here you see how a box with a 4 pixel #32190C colored shadow looks like.

```
.boxshadow{ -moz-box-shadow:4px 4px 4px  
4px #32190C; -webkit-box-shadow:4px 4px  
4px 4px #32190C; box-shadow:4px 4px 4px  
4px #32190C }
```

Background

The CSS property to change the background color of an element to Hex 32190C is called "background". The background property can be set on classes, ids or directly on the HTML element.

```
.background, #background, body{  
background:#32190C }
```

If only the background color should be changed can be used:

```
.background{ background-color:#32190C }
```

This example shows the color as background, it is applied via the CSS property "background".

To optimize and compress your CSS code, you can use our [online CSS compressor and optimizer](#) based on csstidy. If you want to create a linear or radial gradient as background or border, check our [CSS Gradient Generator](#).

Hey! You found this booklet interesting? Support Converting Colors with the new Membership Option!

The pro membership hides all ads, plus gives you double the colors in the color bucket, and more awesome pro features!

[Learn more, Memberships starting at \\$2.50/m!](#)

**Follow me
on Twitter!**

@ConvertingColor