

# Converting Colors

Hex(321915)

Have a look what the booklet for  
Hex(321915) contains.

<b>Hex(321915)</b> .....	3
<i><b>Conversions</b></i> .....	4
<i><b>Details</b></i> .....	6
<i><b>Harmonies</b></i> .....	11
<i><b>Previews</b></i> .....	23
<i><b>Color Blindness Simulation</b></i> .....	26
<i><b>CSS Examples</b></i> .....	29

# Color

Hex(321915)

# Conversions

## Conversions Part 1

Format	Color
Hex	321915
RGB	50, 25, 21
RGB Percent	20%, 10%, 8%
CMY	0.8039, 0.9020, 0.9176
CMYK	0.00, 0.50, 0.58, 0.80
HSL	8°, 41%, 14%
HSV	8°, 58%, 20%
XYZ	1.7984, 1.4275, 0.8902
YIQ	32.0190, 16.1840, 4.0560

# Conversions

## Conversions Part 2

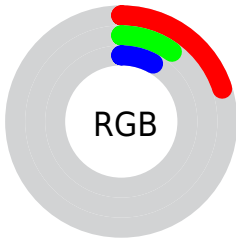
<b>Format</b>	<b>Color</b>
<b>R<sub>YB</sub></b>	50, 26, 21
Decimal	3283221
CIE Lab	12.14, 11.94, 8.20
CIE LCh	12, 14.486, 34.463
Yxy	1.4275, 0.4369, 0.3468
Android (android.graphics.Color)	4281473301 (0xFF321915)
YUV	32.0190, -5.4324, 15.7693
Hunter-Lab	11.9479, 5.9589, 3.9459

# Details

The Hex color **321915** is a dark color, and the websafe version is hex **330000**. A complement of this color would be **152E32**, and the grayscale version is **202020**.

A 20% lighter version of the original color is **62443F**, and **000000** is the 20% darker color. If you saturate the color by 10%, you get **321510**, and if you desaturate by 10%, it is **321D1A**.

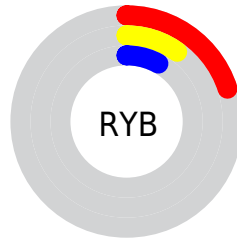
# Distribution



Red (20%)

Green (10%)

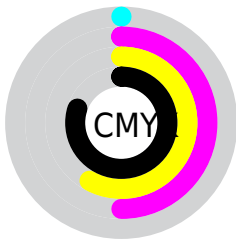
Blue (8%)



Red (20%)

Yellow (10%)

Blue (8%)

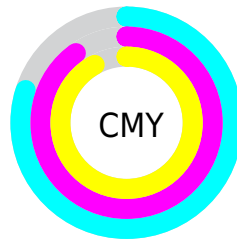


Cyan (0%)

Magenta (50%)

Yellow (58%)

Black (80%)



Cyan (80%)

Magenta (90%)

Yellow (92%)

# Brightness & Saturation Gradients

These gradients show how the Hex color 321915 changes by changing the brightness by 10 percent. The first figure shows a shift by +10% for each color and the second figure -10%.

Similar to the brightness gradients but the following saturation gradients show a change of the Hex color 321915 by changing the saturation by 10% instead.



 321915

 321915

 FFFDF6

 1E0000

 62443F

 000000

 7B5C56

 96756F

 B18E88

 CCA9A2

 E9C4BD

 FFE0D9

 321915

 321915

■ 321510

■ 321D1A

■ 32100B

■ 32221F

■ 320C06

■ 322624

■ 320801

■ 322A29

■ 320700

■ 322F2E

■ 323333

■ 323738

■ 323B3D

■ 324042

# Harmonies

## Analogous

The Analogous color harmony consists of three colors that are next to each other on the color wheel.



32181F



321915



2D1C0C

# Triad

The Triadic color harmony groups three colors that are evenly spaced from another and form a triangle on the color wheel.



321915



0D2417



132034

# Complementary

The Complementary color scheme is a pair of colors which are on the opposite of each other on the color wheel.



321915



152E32

# Split Complementary

Split-complementary colors differ from the complementary color scheme. The scheme consists of three colors, the original color and two neighbors of the complement color.



002332



321915



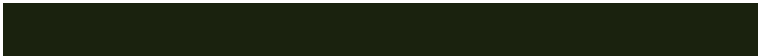
002521

# Square

The Square scheme is like the rectangle color scheme, but the four colors are evenly spaced on the color wheel.



321915



1A220E



00252B



231D30

# Rectangle

The Rectangle color scheme consists of four colors that form a rectangle on the color wheel.



321915



281F09



00252B



0C2133



# Sweetspot

The Sweet Spot groups the original color and five complimentary colors.



321915



403635



32152E



211B1B



A1A1A1



212121



# Same Dimension

The Same Dimension uses a secret algorithm to generate beautiful new colors.



321915



401913



322715



1A1717



590C00



D91E00



# Inverse Universe

The Inverse Universe completely reimagines the original color for something new.



152E32



133A40



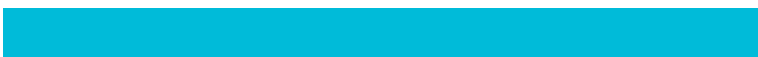
152032



17191A



004D59

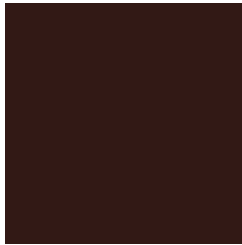


00BBD9



# Previews

## White Background



This preview shows how the Hex color 321915 looks on a white background.

## Color Contrast Check

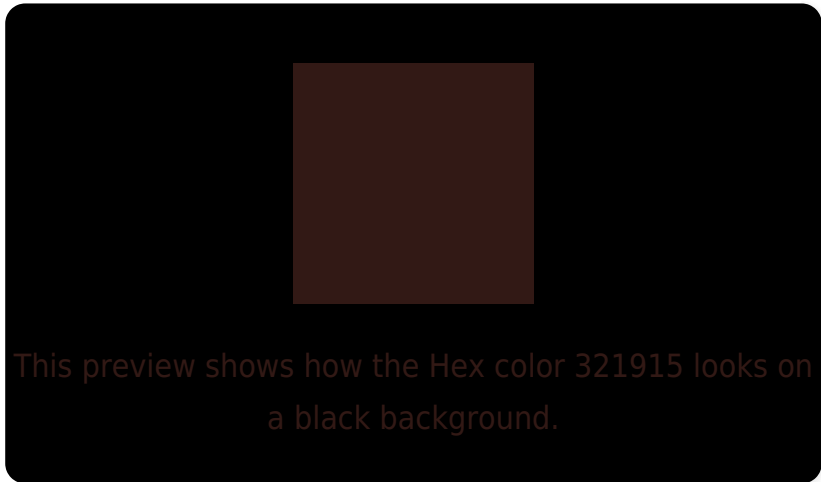
Large Text (above 18pt) WCAG AA ✓ Pass

Any Text WCAG AA ✓ Pass

Large Text (above 18pt) WCAG AAA ✓ Pass

Any Text WCAG AAA ✓ Pass

# Black Background



## Color Contrast Check

Large Text (above 18pt) WCAG AA × Fail

Any Text WCAG AA × Fail

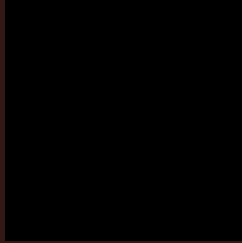
Large Text (above 18pt) WCAG AAA × Fail

Any Text WCAG AAA × Fail

If you want to check with other color combinations, try the [Color Contrast Checker](#).



## Hex 321915 Background



This preview shows how black text looks on a background with the Hex color 321915.



This preview shows how white text looks on a background with the Hex color 321915.

# Color Blindness Simulation

Color vision deficiency is a very complex topic, and I could not describe the different causes any better than Wikipedia does, so if you want to learn more, you should check out their [article about color blindness](#).

## Dichromacy



**Original Color**  
321915

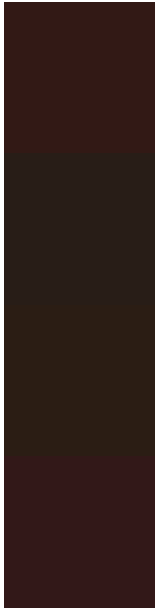
**Protanopia**  
232018

**Deuteranopia**  
271F14



**Tritanopia**  
32181A

# Trichromacy



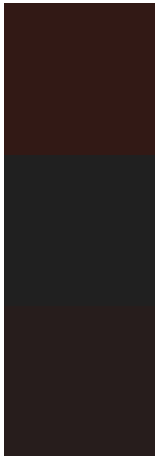
**Original Color**  
321915

**Protanomaly**  
281D17

**Deuteranomaly**  
2B1D14

**Tritanomaly**  
321818

# Monochromacy



**Original Color**  
321915

**Achromatopsia**  
202020

**Achromatomaly**  
271D1C

# CSS Examples

## Text

The CSS property to change the color of the text to Hex 321915 is called "color". The color property can be set on classes, ids or directly on the HTML element.

This example shows how text in the color #321915 looks like.

```
.text, #text, p{  
    color:#321915  
}
```

If you want to add a text shadow in that color use the text-shadow property, you can generate a text shadow directly with our [CSS Text Shadow Generator](#).

Here you see how black text with a 4 pixel #321915 colored shadow looks like.

```
.shadow{ text-shadow: 4px 4px 2px #321915
}
```

## Border

The CSS property to change the border of an element to Hex 321915 is called "border". The border property can be set on classes, ids or directly on the HTML element.

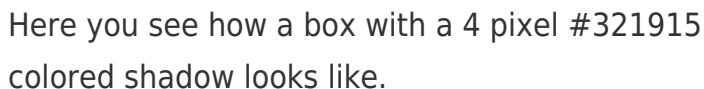
This example shows the color as border, it can be applied via the CSS property "border" or "border-color".

```
.border, #border, table{ border:4px solid
#321915 }
```

If only the border color should be changed use the property `border-color`.

```
.border{ border-color:#321915 }
```

If you want to add a box shadow in that color use:



Here you see how a box with a 4 pixel #321915 colored shadow looks like.

```
.boxshadow{ -moz-box-shadow:4px 4px 4px  
4px #321915; -webkit-box-shadow:4px 4px  
4px 4px #321915; box-shadow:4px 4px 4px  
4px #321915 }
```

# Background

The CSS property to change the background color of an element to Hex 321915 is called "background". The background property can be set on classes, ids or directly on the HTML element.

```
.background, #background, body{  
background:#321915 }
```

If only the background color should be changed can be used:

```
.background{ background-color:#321915 }
```

This example shows the color as background, it is applied via the CSS property "background".

To optimize and compress your CSS code, you can use our [online CSS compressor and optimizer](#) based on csstidy. If you want to create a linear or radial gradient as background or border, check our [CSS Gradient Generator](#).



# Hey! You found this booklet interesting? Support Converting Colors with the new Membership Option!

The pro membership hides all ads, plus gives you double the colors in the color bucket, and more awesome pro features!

**[Learn more, Memberships starting at \\$2.50/m!](#)**

**Follow me  
on Twitter!**

@ConvertingColor