

Converting Colors

Hex(321C0F)

Have a look what the booklet for
Hex(321C0F) contains.

Hex(321C0F)	3
<i>Conversions</i>	4
<i>Details</i>	6
<i>Harmonies</i>	11
<i>Previews</i>	23
<i>Color Blindness Simulation</i>	26
<i>CSS Examples</i>	29

Color

Hex(321C0F)

Conversions

Conversions Part 1

Format	Color
Hex	321C0F
RGB	50, 28, 15
RGB Percent	20%, 11%, 6%
CMY	0.8039, 0.8902, 0.9412
CMYK	0.00, 0.44, 0.70, 0.80
HSL	22°, 54%, 13%
HSV	22°, 70%, 20%
XYZ	1.8169, 1.5431, 0.6540
YIQ	33.0960, 17.2850, 0.6210

Conversions

Conversions Part 2

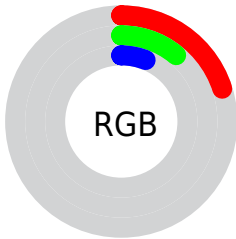
Format	Color
R_{YB}	50, 36, 15
Decimal	3283983
CIE _{Lab}	12.88, 9.21, 12.85
CIE _{LCh}	13, 15.810, 54.375
Yxy	1.5431, 0.4526, 0.3844
Android (android.graphics.Color)	4281474063 (0xFF321C0F)
YUV	33.0960, -8.9213, 14.8248
Hunter-Lab	12.4222, 4.3686, 5.5739

Details

The Hex color **321C0F** is a dark color, and the websafe version is hex **330000**. A complement of this color would be **0F2532**, and the grayscale version is **212121**.

A 20% lighter version of the original color is **62483A**, and **000000** is the 20% darker color. If you saturate the color by 10%, you get **32190A**, and if you desaturate by 10%, it is **321F14**.

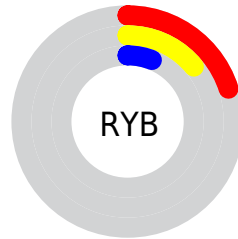
Distribution



Red (20%)

Green (11%)

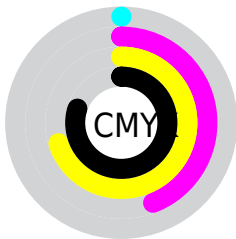
Blue (6%)



Red (20%)

Yellow (14%)

Blue (6%)

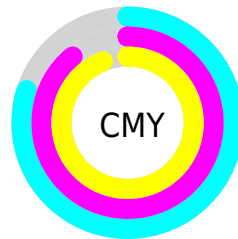


Cyan (0%)

Magenta (44%)

Yellow (70%)

Black (80%)



Cyan (80%)

Magenta (89%)

Yellow (94%)

Brightness & Saturation Gradients

These gradients show how the Hex color 321C0F changes by changing the brightness by 10 percent. The first figure shows a shift by +10% for each color and the second figure -10%.

Similar to the brightness gradients but the following saturation gradients show a change of the Hex color 321C0F by changing the saturation by 10% instead.

 321C0F

 321C0F

 FFFFEF

 1D0300

 62483A

 000000

 7C5F51

 967869

 B19282

 CDAC9C

 E9C8B7

 FFE4D2

 321C0F

 321C0F

■ 32190A

■ 321F14

■ 321605

■ 322219

■ 321300

■ 32251E

■ 322923

■ 322C28

■ 322F2D

■ 323232

■ 323537

■ 32383C

Harmonies

Analogous

The Analogous color harmony consists of three colors that are next to each other on the color wheel.



361919



321C0F



2A2008

Triad

The Triadic color harmony groups three colors that are evenly spaced from another and form a triangle on the color wheel.



321C0F



01271F



1F1F35

Complementary

The Complementary color scheme is a pair of colors which are on the opposite of each other on the color wheel.



321C0F



0F2532

Split Complementary

Split-complementary colors differ from the complementary color scheme. The scheme consists of three colors, the original color and two neighbors of the complement color.



0A2337



321C0F



00272A

Square

The Square scheme is like the rectangle color scheme, but the four colors are evenly spaced on the color wheel.



321C0F



122614



002633



2D1B2E

Rectangle

The Rectangle color scheme consists of four colors that form a rectangle on the color wheel.



321C0F



232209



002633



192136

Sweetspot

The Sweet Spot groups the original color and five complimentary colors.



321C0F



403732



320F25



211C19



A1A1A1



212121

Same Dimension

The Same Dimension uses a secret algorithm to generate beautiful new colors.



321C0F



401E0A



322D0F



1A1817



592100



D95100

Inverse Universe

The Inverse Universe completely reimagines the original color for something new.



0F2532



0A2C40



0F1432



17191A



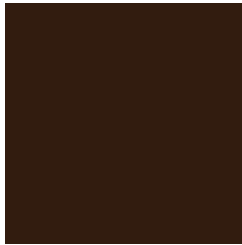
003859



0088D9

Previews

White Background



This preview shows how the Hex color 321C0F looks on a white background.

Color Contrast Check

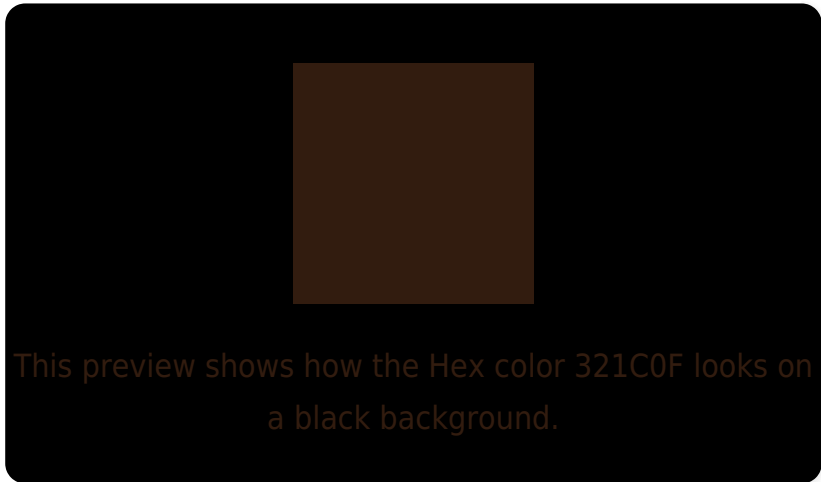
Large Text (above 18pt) WCAG AA ✓ Pass

Any Text WCAG AA ✓ Pass

Large Text (above 18pt) WCAG AAA ✓ Pass

Any Text WCAG AAA ✓ Pass

Black Background



Color Contrast Check

Large Text (above 18pt) WCAG AA × Fail

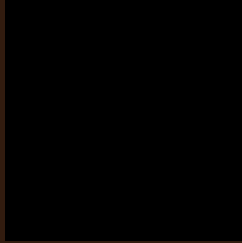
Any Text WCAG AA × Fail

Large Text (above 18pt) WCAG AAA × Fail

Any Text WCAG AAA × Fail

If you want to check with other color combinations, try the [Color Contrast Checker](#).

Hex 321C0F Background



This preview shows how black text looks on a background with the Hex color 321C0F.

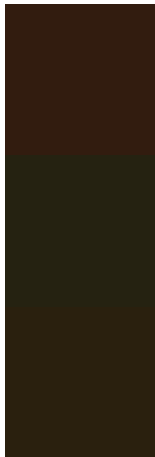


This preview shows how white text looks on a background with the Hex color 321C0F.

Color Blindness Simulation

Color vision deficiency is a very complex topic, and I could not describe the different causes any better than Wikipedia does, so if you want to learn more, you should check out their [article about color blindness](#).

Dichromacy



Original Color
321C0F

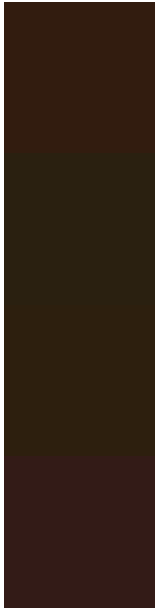
Protanopia
252211

Deuteranopia
2A200E



Tritanopia
331A1C

Trichromacy



Original Color
321C0F

Protanomaly
2A2010

Deuteranomaly
2D1F0E

Tritanomaly
331B17

Monochromacy



Original Color
321C0F

Achromatopsia
212121

Achromatomaly
271F1A

CSS Examples

Text

The CSS property to change the color of the text to Hex 321C0F is called "color". The color property can be set on classes, ids or directly on the HTML element.

This example shows how text in the color #321C0F looks like.

```
.text, #text, p{  
    color:#321C0F  
}
```

If you want to add a text shadow in that color use the text-shadow property, you can generate a text shadow directly with our [CSS Text Shadow Generator](#).

Here you see how black text with a 4 pixel #321C0F colored shadow looks like.

```
.shadow{ text-shadow: 4px 4px 2px #321C0F
}
```

Border

The CSS property to change the border of an element to Hex 321C0F is called "border". The border property can be set on classes, ids or directly on the HTML element.

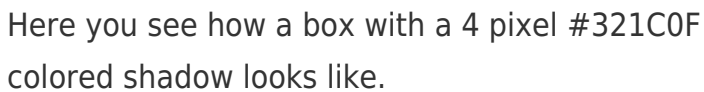
This example shows the color as border, it can be applied via the CSS property "border" or "border-color".

```
.border, #border, table{ border:4px solid
#321C0F }
```

If only the border color should be changed use the property `border-color`.

```
.border{ border-color:#321C0F }
```

If you want to add a box shadow in that color use:



Here you see how a box with a 4 pixel `#321C0F` colored shadow looks like.

```
.boxshadow{ -moz-box-shadow:4px 4px 4px  
4px #321C0F; -webkit-box-shadow:4px 4px  
4px 4px #321C0F; box-shadow:4px 4px 4px  
4px #321C0F }
```

Background

The CSS property to change the background color of an element to Hex 321C0F is called "background". The background property can be set on classes, ids or directly on the HTML element.

```
.background, #background, body{  
background:#321C0F }
```

If only the background color should be changed can be used:

```
.background{ background-color:#321C0F }
```

This example shows the color as background, it is applied via the CSS property "background".

To optimize and compress your CSS code, you can use our [online CSS compressor and optimizer](#) based on csstidy. If you want to create a linear or radial gradient as background or border, check our [CSS Gradient Generator](#).

Hey! You found this booklet interesting? Support Converting Colors with the new Membership Option!

The pro membership hides all ads, plus gives you double the colors in the color bucket, and more awesome pro features!

[Learn more, Memberships starting at \\$2.50/m!](#)

**Follow me
on Twitter!**

@ConvertingColor