

# Converting Colors

Hex(34160E)

Have a look what the booklet for  
Hex(34160E) contains.

<b>Hex(34160E)</b> .....	3
<b><i>Conversions</i></b> .....	4
<b><i>Details</i></b> .....	6
<b><i>Harmonies</i></b> .....	11
<b><i>Previews</i></b> .....	23
<b><i>Color Blindness Simulation</i></b> .....	26
<b><i>CSS Examples</i></b> .....	29

# Color

**Hex(34160E)**

# Conversions

## Conversions Part 1

Format	Color
Hex	34160E
RGB	52, 22, 14
RGB Percent	20%, 9%, 5%
CMY	0.7961, 0.9137, 0.9451
CMYK	0.00, 0.58, 0.73, 0.80
HSL	13°, 58%, 13%
HSV	13°, 73%, 20%
XYZ	1.7823, 1.3356, 0.5793
YIQ	30.0580, 20.4480, 3.8720

# Conversions

## Conversions Part 2

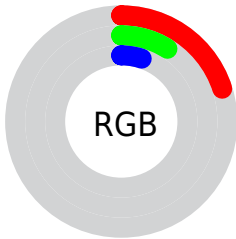
Format	Color
<a href="#">RYB</a>	<a href="#">52, 24, 14</a>
Decimal	<a href="#">3413518</a>
CIELab	<a href="#">11.52, 14.21, 11.58</a>
CIElCh	<a href="#">12, 18.329, 39.180</a>
Yxy	<a href="#">1.3356, 0.4821, 0.3612</a>
Android (android.graphics.Color)	<a href="#">4281603598 (0xFF34160E)</a>
YUV	<a href="#">30.0580, -7.9166, 19.2431</a>
Hunter-Lab	<a href="#">11.5568, 7.3049, 5.1176</a>

# Details

The Hex color **34160E** is a dark color, and the websafe version is hex **330000**. A complement of this color would be **0E2C34**, and the grayscale version is **1E1E1E**.

A 20% lighter version of the original color is **654139**, and **000000** is the 20% darker color. If you saturate the color by 10%, you get **341209**, and if you desaturate by 10%, it is **341A13**.

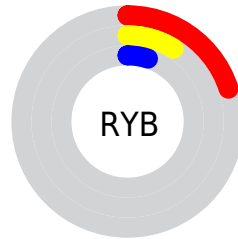
# Distribution



 Red (20%)

 Green (9%)

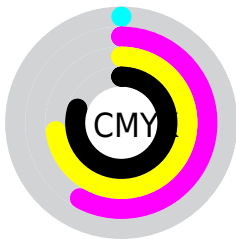
 Blue (5%)




 Red (20%)

 Yellow (9%)

 Blue (5%)

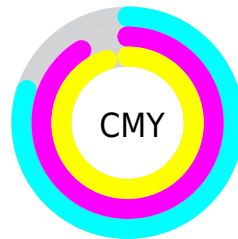


 Cyan (0%)

 Magenta (58%)

 Yellow (73%)

 Black (80%)



 Cyan (80%)

 Magenta (91%)

 Yellow (95%)

# Brightness & Saturation Gradients

These gradients show how the Hex color 34160E changes by changing the brightness by 10 percent. The first figure shows a shift by +10% for each color and the second figure -10%.

Similar to the brightness gradients but the following saturation gradients show a change of the Hex color 34160E by changing the saturation by 10% instead.



 34160E

 34160E

 FFF9ED

 1F0000

 654139

 000000

 7F5950

 997268

 B58B81

 D1A69B

 EDC1B6

 FFDDD1

 34160E

 34160E

■ 341209

■ 341A13

■ 340E04

■ 341E18

■ 340B00

■ 34221E

■ 342623

■ 342B28

■ 342F2D

■ 343332

■ 343738

■ 343B3D

# Harmonies

## Analogous

The Analogous color harmony consists of three colors that are next to each other on the color wheel.



36131B



34160E



2E1B00

# Triad

The Triadic color harmony groups three colors that are evenly spaced from another and form a triangle on the color wheel.



34160E



022415



0F1F37

# Complementary

The Complementary color scheme is a pair of colors which are on the opposite of each other on the color wheel.



34160E



0E2C34

# Split Complementary

Split-complementary colors differ from the complementary color scheme. The scheme consists of three colors, the original color and two neighbors of the complement color.



002236



34160E



002522

# Square

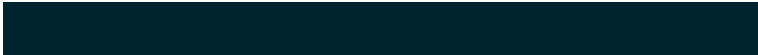
The Square scheme is like the rectangle color scheme, but the four colors are evenly spaced on the color wheel.



34160E



152207



00242E



241A32

# Rectangle

The Rectangle color scheme consists of four colors that form a rectangle on the color wheel.



34160E



271E00



00242E



032038



# Sweetspot

The Sweet Spot groups the original color and five complimentary colors.



34160E



453936



340E2C



241C1A



A3A3A3



242424



# Same Dimension

The Same Dimension uses a secret algorithm to generate beautiful new colors.



34160E



451508



34290E



1A1717



591300



D92E00



# Inverse Universe

The Inverse Universe completely reimagines the original color for something new.



0E2C34



083845



0E1934



17191A



004659

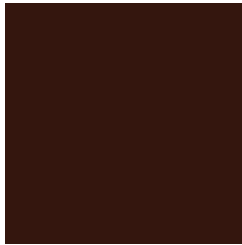


00ABD9



# Previews

## White Background



This preview shows how the Hex color 34160E looks on a white background.

## Color Contrast Check

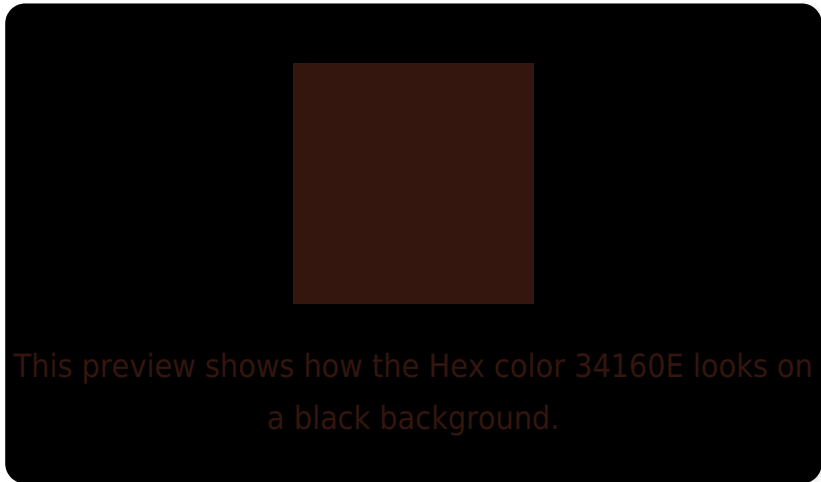
Large Text (above 18pt) WCAG AA ✓ Pass

Any Text WCAG AA ✓ Pass

Large Text (above 18pt) WCAG AAA ✓ Pass

Any Text WCAG AAA ✓ Pass

# Black Background



## Color Contrast Check

Large Text (above 18pt) WCAG AA × Fail

Any Text WCAG AA × Fail

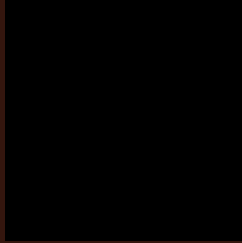
Large Text (above 18pt) WCAG AAA × Fail

Any Text WCAG AAA × Fail

If you want to check with other color combinations, try the [Color Contrast Checker](#).



## Hex 34160E Background



This preview shows how black text looks on a background with the Hex color 34160E.

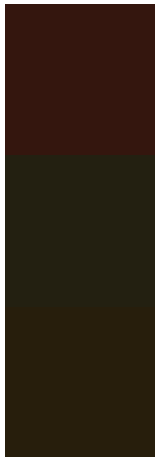


This preview shows how white text looks on a background with the Hex color 34160E.

# Color Blindness Simulation

Color vision deficiency is a very complex topic, and I could not describe the different causes any better than Wikipedia does, so if you want to learn more, you should check out their [article about color blindness](#).

## Dichromacy



**Original Color**  
34160E

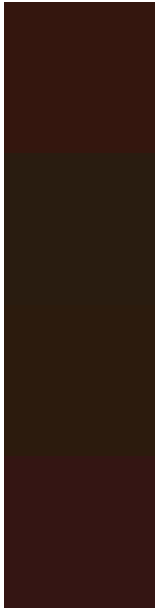
**Protanopia**  
232011

**Deuteranopia**  
271E0C



**Tritanopia**  
341516

# Trichromacy



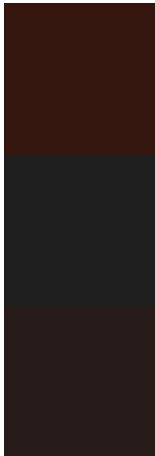
**Original Color**  
34160E

**Protanomaly**  
291C10

**Deuteranomaly**  
2C1B0D

**Tritanomaly**  
341513

# Monochromacy



**Original Color**  
34160E

**Achromatopsia**  
1E1E1E

**Achromatomaly**  
261B18

# CSS Examples

## Text

The CSS property to change the color of the text to Hex 34160E is called "color". The color property can be set on classes, ids or directly on the HTML element.

This example shows how text in the color #34160E looks like.

```
.text, #text, p{  
    color:#34160E  
}
```

If you want to add a text shadow in that color use the text-shadow property, you can generate a text shadow directly with our [CSS Text Shadow Generator](#).

Here you see how black text with a 4 pixel #34160E colored shadow looks like.

```
.shadow{ text-shadow: 4px 4px 2px #34160E
}
```

## Border

The CSS property to change the border of an element to Hex 34160E is called "border". The border property can be set on classes, ids or directly on the HTML element.

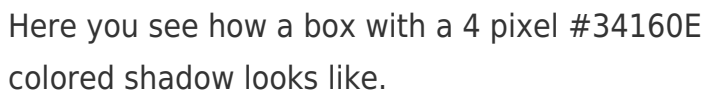
This example shows the color as border, it can be applied via the CSS property "border" or "border-color".

```
.border, #border, table{ border:4px solid
#34160E }
```

If only the border color should be changed use the property `border-color`.

```
.border{ border-color:#34160E }
```

If you want to add a box shadow in that color use:



Here you see how a box with a 4 pixel #34160E colored shadow looks like.

```
.boxshadow{ -moz-box-shadow:4px 4px 4px  
4px #34160E; -webkit-box-shadow:4px 4px  
4px 4px #34160E; box-shadow:4px 4px 4px  
4px #34160E }
```

# Background

The CSS property to change the background color of an element to Hex 34160E is called "background". The background property can be set on classes, ids or directly on the HTML element.

```
.background, #background, body{  
background:#34160E }
```

If only the background color should be changed can be used:

```
.background{ background-color:#34160E }
```

This example shows the color as background, it is applied via the CSS property "background".

To optimize and compress your CSS code, you can use our [online CSS compressor and optimizer](#) based on csstidy. If you want to create a linear or radial gradient as background or border, check our [CSS Gradient Generator](#).



# Hey! You found this booklet interesting? Support Converting Colors with the new Membership Option!

The pro membership hides all ads, plus gives you double the colors in the color bucket, and more awesome pro features!

**[Learn more, Memberships starting at \\$2.50/m!](#)**

**Follow me  
on Twitter!**

@ConvertingColor