

Converting Colors

Hex(361012)

Have a look what the booklet for
Hex(361012) contains.

Hex(361012)	3
<i>Conversions</i>	4
<i>Details</i>	6
<i>Harmonies</i>	11
<i>Previews</i>	23
<i>Color Blindness Simulation</i>	26
<i>CSS Examples</i>	29

Color

Hex(361012)

Conversions

Conversions Part 1

Format	Color
Hex	361012
RGB	54, 16, 18
RGB Percent	21%, 6%, 7%
CMY	0.7882, 0.9373, 0.9294
CMYK	0.00, 0.70, 0.67, 0.79
HSL	357°, 54%, 14%
HSV	357°, 70%, 21%
XYZ	1.8158, 1.1985, 0.7079
YIQ	27.5900, 22.0060, 8.6780

Conversions

Conversions Part 2

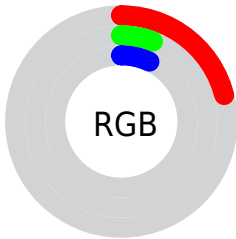
Format	Color
R_{YB}	54, 16, 18
Decimal	3543058
CIE _{Lab}	10.55, 19.24, 8.06
CIE _{LCh}	11, 20.858, 22.726
Yxy	1.1985, 0.4878, 0.3220
Android (android.graphics.Color)	4281733138 (0xFF361012)
YUV	27.5900, -4.7279, 23.1616
Hunter-Lab	10.9477, 10.4476, 3.8296

Details

The Hex color **361012** is a dark color, and the websafe version is hex **330000**. A complement of this color would be **103634**, and the grayscale version is **1C1C1C**.

A 20% lighter version of the original color is **683C3C**, and **000000** is the 20% darker color. If you saturate the color by 10%, you get **360B0D**, and if you desaturate by 10%, it is **361517**.

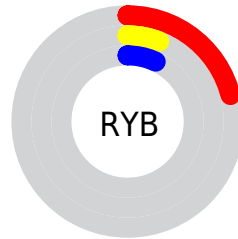
Distribution



Red (21%)

Green (6%)

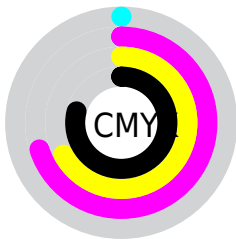
Blue (7%)



Red (21%)

Yellow (6%)

Blue (7%)

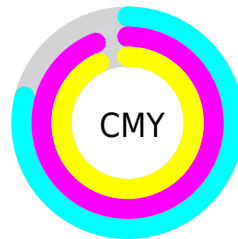


Cyan (0%)

Magenta (70%)

Yellow (67%)

Black (79%)



Cyan (79%)

Magenta (94%)

Yellow (93%)

Brightness & Saturation Gradients

These gradients show how the Hex color 361012 changes by changing the brightness by 10 percent. The first figure shows a shift by +10% for each color and the second figure -10%.

Similar to the brightness gradients but the following saturation gradients show a change of the Hex color 361012 by changing the saturation by 10% instead.

 361012

 361012

 FFF3F2

 220001

 683C3C

 000000

 825353

 9C6C6B

 B88585

 D4A09F

 F1BBBA

 FFD7D5

 361012

 361012

■ 360B0D

■ 361517

■ 360508

■ 361B1C

■ 360003

■ 362021

■ 362626

■ 362B2C

■ 363031

■ 363636

■ 363B3B

■ 364140

Harmonies

Analogous

The Analogous color harmony consists of three colors that are next to each other on the color wheel.



340F21



361012



321500

Triad

The Triadic color harmony groups three colors that are evenly spaced from another and form a triangle on the color wheel.



361012



082207



001F39

Complementary

The Complementary color scheme is a pair of colors which are on the opposite of each other on the color wheel.



361012



103634

Split Complementary

Split-complementary colors differ from the complementary color scheme. The scheme consists of three colors, the original color and two neighbors of the complement color.



002233



361012



002319

Square

The Square scheme is like the rectangle color scheme, but the four colors are evenly spaced on the color wheel.



361012



1B1F00



002327



161A37

Rectangle

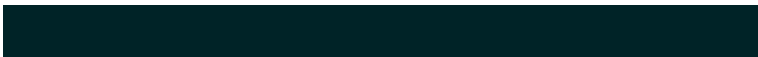
The Rectangle color scheme consists of four colors that form a rectangle on the color wheel.



361012



2C1900



002327



002037

Sweetspot

The Sweet Spot groups the original color and five complimentary colors.



361012



473839



331036



241B1B



A3A3A3



242424

Same Dimension

The Same Dimension uses a secret algorithm to generate beautiful new colors.



361012



470B0F



362010



1C1919



5C0005



DB000C

Inverse Universe

The Inverse Universe completely reimagines the original color for something new.



361012



470B0F



102636



1C1919



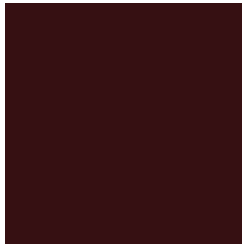
5C0005



DB000C

Previews

White Background



This preview shows how the Hex color 361012 looks on a white background.

Color Contrast Check

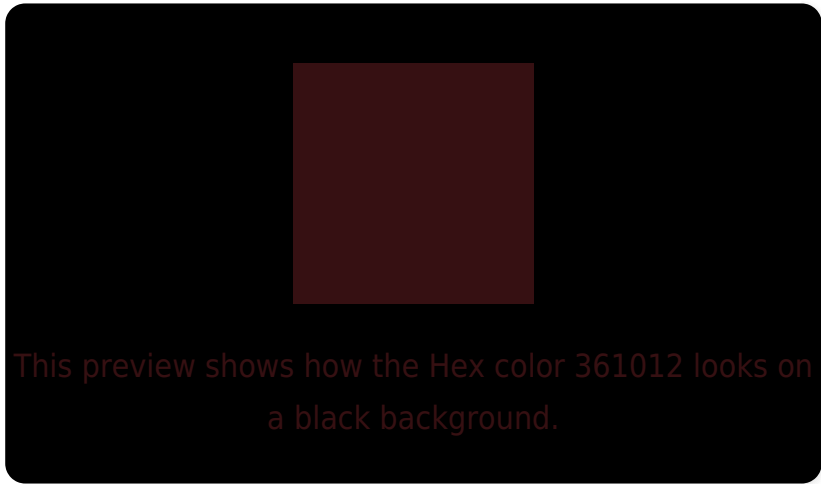
Large Text (above 18pt) WCAG AA ✓ Pass

Any Text WCAG AA ✓ Pass

Large Text (above 18pt) WCAG AAA ✓ Pass

Any Text WCAG AAA ✓ Pass

Black Background



Color Contrast Check

Large Text (above 18pt) WCAG AA × Fail

Any Text WCAG AA × Fail

Large Text (above 18pt) WCAG AAA × Fail

Any Text WCAG AAA × Fail

If you want to check with other color combinations, try the [Color Contrast Checker](#).

Hex 361012 Background



This preview shows how black text looks on a background with the Hex color 361012.



This preview shows how white text looks on a background with the Hex color 361012.

Color Blindness Simulation

Color vision deficiency is a very complex topic, and I could not describe the different causes any better than Wikipedia does, so if you want to learn more, you should check out their [article about color blindness](#).

Dichromacy



Original Color
361012

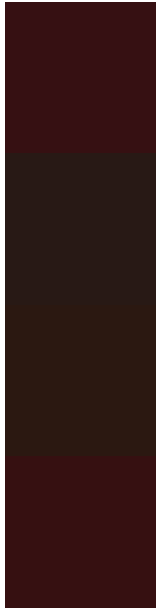
Protanopia
201E17

Deuteranopia
251D10



Tritanopia
361011

Trichromacy



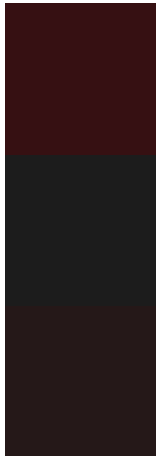
Original Color
361012

Protanomaly
281915

Deuteranomaly
2B1811

Tritanomaly
361011

Monochromacy



Original Color
361012

Achromatopsia
1C1C1C

Achromatomaly
251818

CSS Examples

Text

The CSS property to change the color of the text to Hex 361012 is called "color". The color property can be set on classes, ids or directly on the HTML element.

This example shows how text in the color #361012 looks like.

```
.text, #text, p{  
    color:#361012  
}
```

If you want to add a text shadow in that color use the text-shadow property, you can generate a text shadow directly with our [CSS Text Shadow Generator](#).

Here you see how black text with a 4 pixel #361012 colored shadow looks like.

```
.shadow{ text-shadow: 4px 4px 2px #361012
}
```

Border

The CSS property to change the border of an element to Hex 361012 is called "border". The border property can be set on classes, ids or directly on the HTML element.

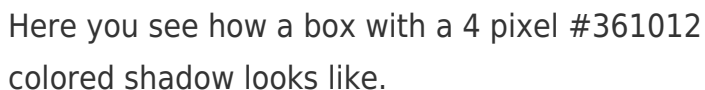
This example shows the color as border, it can be applied via the CSS property "border" or "border-color".

```
.border, #border, table{ border:4px solid
#361012 }
```

If only the border color should be changed use the property `border-color`.

```
.border{ border-color:#361012 }
```

If you want to add a box shadow in that color use:



Here you see how a box with a 4 pixel #361012 colored shadow looks like.

```
.boxshadow{ -moz-box-shadow:4px 4px 4px  
4px #361012; -webkit-box-shadow:4px 4px  
4px 4px #361012; box-shadow:4px 4px 4px  
4px #361012 }
```

Background

The CSS property to change the background color of an element to Hex 361012 is called "background". The background property can be set on classes, ids or directly on the HTML element.

```
.background, #background, body{  
background:#361012 }
```

If only the background color should be changed can be used:

```
.background{ background-color:#361012 }
```

This example shows the color as background, it is applied via the CSS property "background".

To optimize and compress your CSS code, you can use our [online CSS compressor and optimizer](#) based on csstidy. If you want to create a linear or radial gradient as background or border, check our [CSS Gradient Generator](#).

Hey! You found this booklet interesting? Support Converting Colors with the new Membership Option!

The pro membership hides all ads, plus gives you double the colors in the color bucket, and more awesome pro features!

[Learn more, Memberships starting at \\$2.50/m!](#)

**Follow me
on Twitter!**

@ConvertingColor