

Converting Colors

Hex(361F1A)

Have a look what the booklet for
Hex(361F1A) contains.

Hex(361F1A)	3
<i>Conversions</i>	4
<i>Details</i>	6
<i>Harmonies</i>	11
<i>Previews</i>	23
<i>Color Blindness Simulation</i>	26
<i>CSS Examples</i>	29

Color

Hex(361F1A)

Conversions

Conversions Part 1

Format	Color
Hex	361F1A
RGB	54, 31, 26
RGB Percent	21%, 12%, 10%
CMY	0.7882, 0.8784, 0.8980
CMYK	0.00, 0.43, 0.52, 0.79
HSL	11°, 35%, 16%
HSV	11°, 52%, 21%
XYZ	2.1978, 1.8388, 1.2164
YIQ	37.3070, 15.3130, 3.3210

Conversions

Conversions Part 2

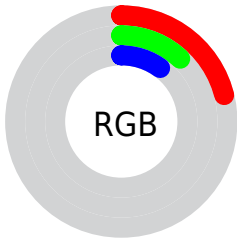
Format	Color
R_{YB}	54, 32, 26
Decimal	3546906
CIE Lab	14.62, 10.47, 8.08
CIE LCh	15, 13.228, 37.647
Yxy	1.8388, 0.4184, 0.3501
Android (android.graphics.Color)	4281736986 (0xFF361F1A)
YUV	37.3070, -5.5744, 14.6398
Hunter-Lab	13.5603, 5.1994, 4.1739

Details

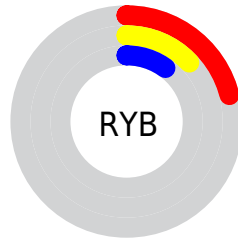
The Hex color **361F1A** is a dark color, and the websafe version is hex **333333**. A complement of this color would be **1A3136**, and the grayscale version is **252525**.

A 20% lighter version of the original color is **664B45**, and **000000** is the 20% darker color. If you saturate the color by 10%, you get **361B15**, and if you desaturate by 10%, it is **36231F**.

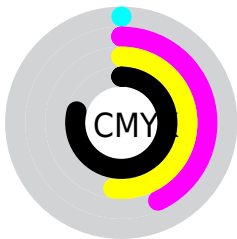
Distribution



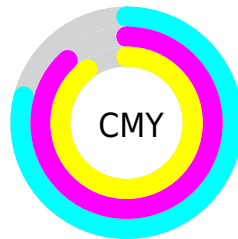
- Red (21%)
- Green (12%)
- Blue (10%)



- Red (21%)
- Yellow (13%)
- Blue (10%)



- Cyan (0%)
- Magenta (43%)
- Yellow (52%)
- Black (79%)



- Cyan (79%)
- Magenta (88%)
- Yellow (90%)

Brightness & Saturation Gradients

These gradients show how the Hex color 361F1A changes by changing the brightness by 10 percent. The first figure shows a shift by +10% for each color and the second figure -10%.

Similar to the brightness gradients but the following saturation gradients show a change of the Hex color 361F1A by changing the saturation by 10% instead.

■ 361F1A

■ 361F1A

FFFFFFD

■ 220800

■ 664B45

■ 000000

■ 80635D

■ 9A7C75

■ B5968F

■ D1B1A9

■ EDCCC4

■ FFE8E0

■ 361F1A

■ 361F1A

■ 361B15

■ 36231F

■ 36160F

■ 362825

■ 36120A

■ 362C2A

■ 360D04

■ 363130

■ 360A00

■ 363535

■ 363A3A

■ 363E40

■ 364245

■ 36474B

Harmonies

Analogous

The Analogous color harmony consists of three colors that are next to each other on the color wheel.



371E23



361F1A



312214

Triad

The Triadic color harmony groups three colors that are evenly spaced from another and form a triangle on the color wheel.



361F1A



13291E



1B2537

Complementary

The Complementary color scheme is a pair of colors which are on the opposite of each other on the color wheel.



361F1A



1A3136

Split Complementary

Split-complementary colors differ from the complementary color scheme. The scheme consists of three colors, the original color and two neighbors of the complement color.



0B2836



361F1A



072A27

Square

The Square scheme is like the rectangle color scheme, but the four colors are evenly spaced on the color wheel.



361F1A



1F2816



022930



292234

Rectangle

The Rectangle color scheme consists of four colors that form a rectangle on the color wheel.



361F1A



2C2412



022930



162637

Sweetspot

The Sweet Spot groups the original color and five complimentary colors.



361F1A



473E3C



361A31



241E1D



A3A3A3



242424

Same Dimension

The Same Dimension uses a secret algorithm to generate beautiful new colors.



361F1A



47231B



362D1A



1C1A19



5C1000



DB2700

Inverse Universe

The Inverse Universe completely reimagines the original color for something new.



1A3136



1B3F47



1A2336



191C1C



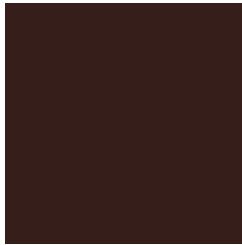
004B5C



00B4DB

Previews

White Background



This preview shows how the Hex color 361F1A looks on a white background.

Color Contrast Check

Large Text (above 18pt) WCAG AA ✓ Pass

Any Text WCAG AA ✓ Pass

Large Text (above 18pt) WCAG AAA ✓ Pass

Any Text WCAG AAA ✓ Pass

Black Background



Color Contrast Check

Large Text (above 18pt) WCAG AA × Fail

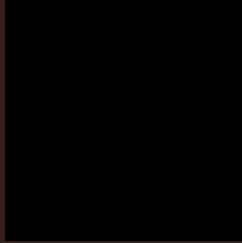
Any Text WCAG AA × Fail

Large Text (above 18pt) WCAG AAA × Fail

Any Text WCAG AAA × Fail

If you want to check with other color combinations, try the [Color Contrast Checker](#).

Hex 361F1A Background



This preview shows how black text looks on a background with the Hex color 361F1A.



This preview shows how white text looks on a background with the Hex color 361F1A.

Color Blindness Simulation

Color vision deficiency is a very complex topic, and I could not describe the different causes any better than Wikipedia does, so if you want to learn more, you should check out their [article about color blindness](#).

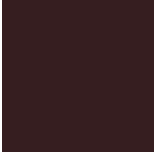
Dichromacy



Original Color
361F1A

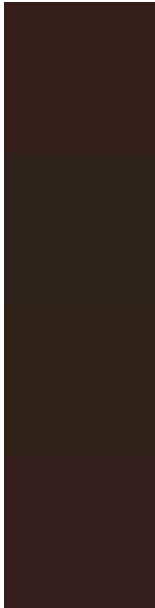
Protanopia
28251D

Deuteranopia
2D2419



Tritanopia
361E20

Trichromacy



Original Color

361F1A

Protanomaly

2D231C

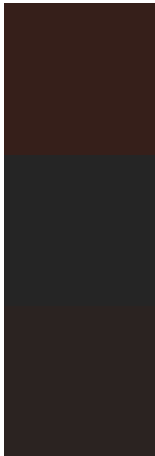
Deuteranomaly

302219

Tritanomaly

361E1E

Monochromacy



Original Color

361F1A

Achromatopsia

252525

Achromatomaly

2B2321

CSS Examples

Text

The CSS property to change the color of the text to Hex 361F1A is called "color". The color property can be set on classes, ids or directly on the HTML element.

This example shows how text in the color #361F1A looks like.

```
.text, #text, p{  
    color:#361F1A  
}
```

If you want to add a text shadow in that color use the text-shadow property, you can generate a text shadow directly with our [CSS Text Shadow Generator](#).

Here you see how black text with a 4 pixel #361F1A colored shadow looks like.

```
.shadow{ text-shadow: 4px 4px 2px #361F1A
}
```

Border

The CSS property to change the border of an element to Hex 361F1A is called "border". The border property can be set on classes, ids or directly on the HTML element.

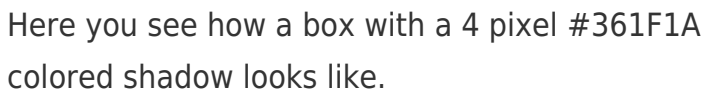
This example shows the color as border, it can be applied via the CSS property "border" or "border-color".

```
.border, #border, table{ border:4px solid
#361F1A }
```

If only the border color should be changed use the property `border-color`.

```
.border{ border-color:#361F1A }
```

If you want to add a box shadow in that color use:



Here you see how a box with a 4 pixel #361F1A colored shadow looks like.

```
.boxshadow{ -moz-box-shadow:4px 4px 4px  
4px #361F1A; -webkit-box-shadow:4px 4px  
4px 4px #361F1A; box-shadow:4px 4px 4px  
4px #361F1A }
```

Background

The CSS property to change the background color of an element to Hex 361F1A is called "background". The background property can be set on classes, ids or directly on the HTML element.

```
.background, #background, body{  
background:#361F1A }
```

If only the background color should be changed can be used:

```
.background{ background-color:#361F1A }
```

This example shows the color as background, it is applied via the CSS property "background".

To optimize and compress your CSS code, you can use our [online CSS compressor and optimizer](#) based on csstidy. If you want to create a linear or radial gradient as background or border, check our [CSS Gradient Generator](#).

Hey! You found this booklet interesting? Support Converting Colors with the new Membership Option!

The pro membership hides all ads, plus gives you double the colors in the color bucket, and more awesome pro features!

[Learn more, Memberships starting at \\$2.50/m!](#)

**Follow me
on Twitter!**

@ConvertingColor