

Converting Colors

Hex(392011)

Have a look what the booklet for
Hex(392011) contains.

Hex(392011)	3
<i>Conversions</i>	4
<i>Details</i>	6
<i>Harmonies</i>	11
<i>Previews</i>	23
<i>Color Blindness Simulation</i>	26
<i>CSS Examples</i>	29

Color

Hex(392011)

Conversions

Conversions Part 1

Format	Color
Hex	392011
RGB	57, 32, 17
RGB Percent	22%, 13%, 7%
CMY	0.7765, 0.8745, 0.9333
CMYK	0.00, 0.44, 0.70, 0.78
HSL	22°, 54%, 15%
HSV	22°, 70%, 22%
XYZ	2.3050, 1.9434, 0.7839
YIQ	37.7650, 19.7150, 0.6350

Conversions

Conversions Part 2

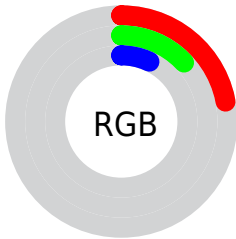
Format	Color
RYB	57, 41, 17
Decimal	3743761
CIELab	15.19, 10.30, 14.97
CIElCh	15, 18.173, 55.474
Yxy	1.9434, 0.4580, 0.3862
Android (android.graphics.Color)	4281933841 (0xFF392011)
YUV	37.7650, -10.2371, 16.8691
Hunter-Lab	13.9404, 5.1190, 6.4242

Details

The Hex color **392011** is a dark color, and the websafe version is hex **330000**. A complement of this color would be **112A39**, and the grayscale version is **262626**.

A 20% lighter version of the original color is **6A4C3B**, and **000000** is the 20% darker color. If you saturate the color by 10%, you get **391C0B**, and if you desaturate by 10%, it is **392417**.

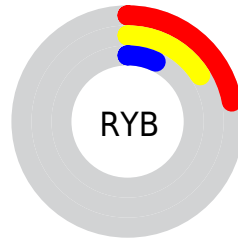
Distribution



Red (22%)

Green (13%)

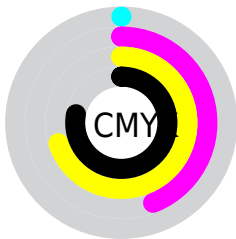
Blue (7%)



Red (22%)

Yellow (16%)

Blue (7%)

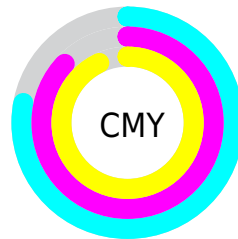


Cyan (0%)

Magenta (44%)

Yellow (70%)

Black (78%)



Cyan (78%)

Magenta (87%)

Yellow (93%)

Brightness & Saturation Gradients

These gradients show how the Hex color 392011 changes by changing the brightness by 10 percent. The first figure shows a shift by +10% for each color and the second figure -10%.

Similar to the brightness gradients but the following saturation gradients show a change of the Hex color 392011 by changing the saturation by 10% instead.

 392011

 392011

 FFFFFF1

 230A00

 6A4C3B

 000000

 846453

 9F7D6B

 BA9784

 D6B29E

 F3CDB9

 FFE9D5

 392011

 392011

■ 391C0B

■ 392417

■ 391906

■ 39271C

■ 391500

■ 392B22

■ 392E28

■ 39322E

■ 393533

■ 393939

■ 393D3F

■ 394044

Harmonies

Analogous

The Analogous color harmony consists of three colors that are next to each other on the color wheel.



3E1C1C



392011



30250A

Triad

The Triadic color harmony groups three colors that are evenly spaced from another and form a triangle on the color wheel.



392011



002C24



24233D

Complementary

The Complementary color scheme is a pair of colors which are on the opposite of each other on the color wheel.



392011



112A39

Split Complementary

Split-complementary colors differ from the complementary color scheme. The scheme consists of three colors, the original color and two neighbors of the complement color.



09283F



392011



002C31

Square

The Square scheme is like the rectangle color scheme, but the four colors are evenly spaced on the color wheel.



392011



132B17



002B3B



341F35

Rectangle

The Rectangle color scheme consists of four colors that form a rectangle on the color wheel.



392011



27270B



002B3B



1D253F

Sweetspot

The Sweet Spot groups the original color and five complimentary colors.



392011



4A403A



39112A



26201D



A6A6A6



262626

Same Dimension

The Same Dimension uses a secret algorithm to generate beautiful new colors.



392011



4A230C



393411



1C1A19



5C2200



DB5200

Inverse Universe

The Inverse Universe completely reimagines the original color for something new.



112A39



0C334A



111639



191B1C



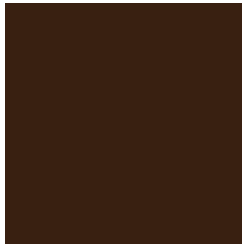
00395C



0089DB

Previews

White Background



This preview shows how the Hex color 392011 looks on a white background.

Color Contrast Check

Large Text (above 18pt) WCAG AA ✓ Pass

Any Text WCAG AA ✓ Pass

Large Text (above 18pt) WCAG AAA ✓ Pass

Any Text WCAG AAA ✓ Pass

Black Background



Color Contrast Check

Large Text (above 18pt) WCAG AA × Fail

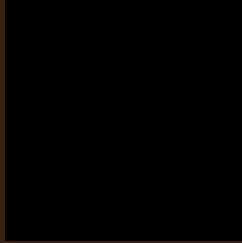
Any Text WCAG AA × Fail

Large Text (above 18pt) WCAG AAA × Fail

Any Text WCAG AAA × Fail

If you want to check with other color combinations, try the [Color Contrast Checker](#).

Hex 392011 Background



This preview shows how black text looks on a background with the Hex color 392011.

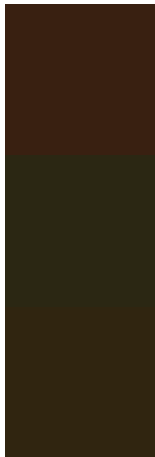


This preview shows how white text looks on a background with the Hex color 392011.

Color Blindness Simulation

Color vision deficiency is a very complex topic, and I could not describe the different causes any better than Wikipedia does, so if you want to learn more, you should check out their [article about color blindness](#).

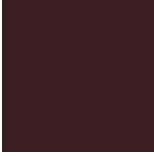
Dichromacy



Original Color
392011

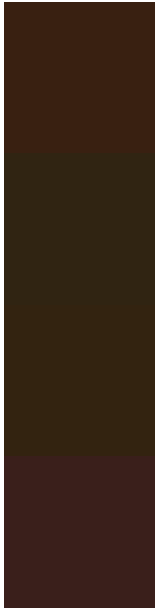
Protanopia
2B2713

Deuteranopia
302510



Tritanopia
3A1E20

Trichromacy



Original Color
392011

Protanomaly
302412

Deuteranomaly
332310

Tritanomaly
3A1F1B

Monochromacy



Original Color
392011

Achromatopsia
262626

Achromatomaly
2D241E

CSS Examples

Text

The CSS property to change the color of the text to Hex 392011 is called "color". The color property can be set on classes, ids or directly on the HTML element.

This example shows how text in the color #392011 looks like.

```
.text, #text, p{  
    color:#392011  
}
```

If you want to add a text shadow in that color use the text-shadow property, you can generate a text shadow directly with our [CSS Text Shadow Generator](#).

Here you see how black text with a 4 pixel #392011 colored shadow looks like.

```
.shadow{ text-shadow: 4px 4px 2px #392011
}
```

Border

The CSS property to change the border of an element to Hex 392011 is called "border". The border property can be set on classes, ids or directly on the HTML element.

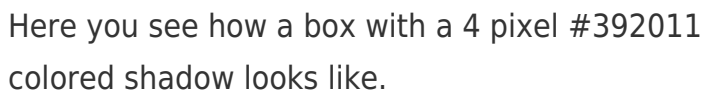
This example shows the color as border, it can be applied via the CSS property "border" or "border-color".

```
.border, #border, table{ border:4px solid
#392011 }
```

If only the border color should be changed use the property `border-color`.

```
.border{ border-color:#392011 }
```

If you want to add a box shadow in that color use:



Here you see how a box with a 4 pixel #392011 colored shadow looks like.

```
.boxshadow{ -moz-box-shadow:4px 4px 4px  
4px #392011; -webkit-box-shadow:4px 4px  
4px 4px #392011; box-shadow:4px 4px 4px  
4px #392011 }
```

Background

The CSS property to change the background color of an element to Hex 392011 is called "background". The background property can be set on classes, ids or directly on the HTML element.

```
.background, #background, body{  
background:#392011 }
```

If only the background color should be changed can be used:

```
.background{ background-color:#392011 }
```

This example shows the color as background, it is applied via the CSS property "background".

To optimize and compress your CSS code, you can use our [online CSS compressor and optimizer](#) based on csstidy. If you want to create a linear or radial gradient as background or border, check our [CSS Gradient Generator](#).

Hey! You found this booklet interesting? Support Converting Colors with the new Membership Option!

The pro membership hides all ads, plus gives you double the colors in the color bucket, and more awesome pro features!

[Learn more, Memberships starting at \\$2.50/m!](#)

**Follow me
on Twitter!**

@ConvertingColor