

# Converting Colors

Hex(3A1517)

Have a look what the booklet for  
Hex(3A1517) contains.

<b>Hex(3A1517)</b> .....	3
<b><i>Conversions</i></b> .....	4
<b><i>Details</i></b> .....	6
<b><i>Harmonies</i></b> .....	11
<b><i>Previews</i></b> .....	23
<b><i>Color Blindness Simulation</i></b> .....	26
<b><i>CSS Examples</i></b> .....	29

**Color**

**Hex(3A1517)**

# Conversions

## Conversions Part 1

Format	Color
Hex	3A1517
RGB	58, 21, 23
RGB Percent	23%, 8%, 9%
CMY	0.7725, 0.9176, 0.9098
CMYK	0.00, 0.64, 0.60, 0.77
HSL	357°, 47%, 15%
HSV	357°, 64%, 23%
XYZ	2.1677, 1.4977, 0.9854
YIQ	32.2910, 21.4100, 8.4660

# Conversions

## Conversions Part 2

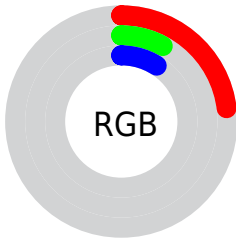
Format	Color
<a href="#">RYB</a>	<a href="#">58, 21, 23</a>
Decimal	<a href="#">3806487</a>
CIELab	<a href="#">12.59, 18.55, 7.62</a>
CIElCh	<a href="#">13, 20.051, 22.336</a>
Yxy	<a href="#">1.4977, 0.4661, 0.3220</a>
Android (android.graphics.Color)	<a href="#">4281996567 (0xFF3A1517)</a>
YUV	<a href="#">32.2910, -4.5805, 22.5468</a>
Hunter-Lab	<a href="#">12.2382, 10.2008, 3.7926</a>

# Details

The Hex color **3A1517** is a dark color, and the websafe version is hex **330000**. A complement of this color would be **153A38**, and the grayscale version is **202020**.

A 20% lighter version of the original color is **6C4141**, and **000000** is the 20% darker color. If you saturate the color by 10%, you get **3A0F12**, and if you desaturate by 10%, it is **3A1B1C**.

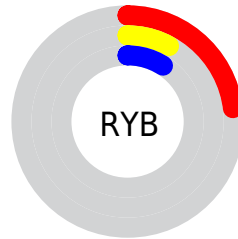
# Distribution



 Red (23%)

 Green (8%)

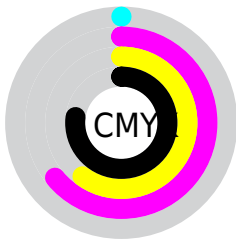
 Blue (9%)



 Red (23%)

 Yellow (8%)

 Blue (9%)

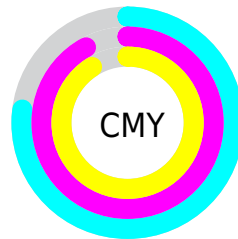


 Cyan (0%)

 Magenta (64%)

 Yellow (60%)

 Black (77%)



 Cyan (77%)

 Magenta (92%)

 Yellow (91%)

# Brightness & Saturation Gradients

These gradients show how the Hex color 3A1517 changes by changing the brightness by 10 percent. The first figure shows a shift by +10% for each color and the second figure -10%.

Similar to the brightness gradients but the following saturation gradients show a change of the Hex color 3A1517 by changing the saturation by 10% instead.





3A1517



3A1517



FFFAF8



260000



6C4141



000000



865959



A17271



BC8B8B



D8A6A5



F5C1C0



FFDDDC



3A1517



3A1517

■ 3A0F12

■ 3A1B1C

■ 3A090C

■ 3A2122

■ 3A0407

■ 3A2627

■ 3A0003

■ 3A2C2D

■ 3A3232

■ 3A3838

■ 3A3E3D

■ 3A4343

■ 3A4948

# Harmonies

## Analogous

The Analogous color harmony consists of three colors that are next to each other on the color wheel.



381525



3A1517



361908

# Triad

The Triadic color harmony groups three colors that are evenly spaced from another and form a triangle on the color wheel.



3A1517



0D260E



00233C

# Complementary

The Complementary color scheme is a pair of colors which are on the opposite of each other on the color wheel.



3A1517



153A38

# Split Complementary

Split-complementary colors differ from the complementary color scheme. The scheme consists of three colors, the original color and two neighbors of the complement color.



002636



3A1517



00271D

# Square

The Square scheme is like the rectangle color scheme, but the four colors are evenly spaced on the color wheel.



3A1517



1F2300



00272B



1B1F3A

# Rectangle

The Rectangle color scheme consists of four colors that form a rectangle on the color wheel.



3A1517



301D00



00272B



00243B



# Sweetspot

The Sweet Spot groups the original color and five complimentary colors.



3A1517



4D3E3F



38153A



261D1E



A6A6A6



262626



# Same Dimension

The Same Dimension uses a secret algorithm to generate beautiful new colors.



3A1517



4D1215



3A2515



1C1919



5C0005



DB000C



# Inverse Universe

The Inverse Universe completely reimagines the original color for something new.



3A1517



4D1215



152A3A



1C1919



5C0005

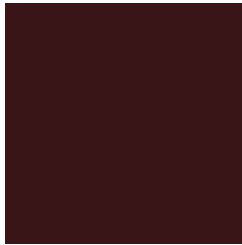


DB000C



# Previews

## White Background



This preview shows how the Hex color 3A1517 looks on a white background.

## Color Contrast Check

Large Text (above 18pt) WCAG AA ✓ Pass

Any Text WCAG AA ✓ Pass

Large Text (above 18pt) WCAG AAA ✓ Pass

Any Text WCAG AAA ✓ Pass

# Black Background



## Color Contrast Check

Large Text (above 18pt) WCAG AA × Fail

Any Text WCAG AA × Fail

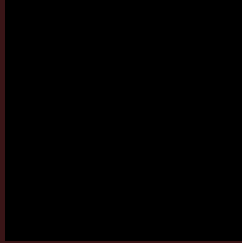
Large Text (above 18pt) WCAG AAA × Fail

Any Text WCAG AAA × Fail

If you want to check with other color combinations, try the [Color Contrast Checker](#).



## Hex 3A1517 Background



This preview shows how black text looks on a background with the Hex color 3A1517.



This preview shows how white text looks on a background with the Hex color 3A1517.

# Color Blindness Simulation

Color vision deficiency is a very complex topic, and I could not describe the different causes any better than Wikipedia does, so if you want to learn more, you should check out their [article about color blindness](#).

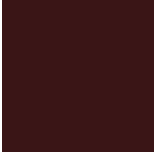
## Dichromacy



**Original Color**  
3A1517

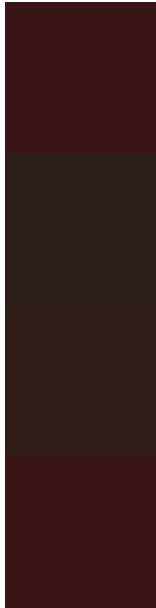
**Protanopia**  
24221D

**Deuteranopia**  
292015



**Tritanopia**  
3A1516

# Trichromacy



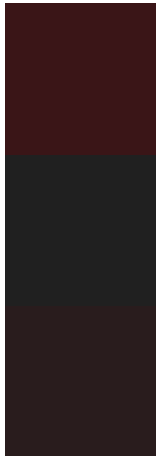
**Original Color**  
3A1517

**Protanomaly**  
2C1D1B

**Deuteranomaly**  
2F1C16

**Tritanomaly**  
3A1516

# Monochromacy



**Original Color**  
3A1517

**Achromatopsia**  
202020

**Achromatomaly**  
291C1D

# CSS Examples

## Text

The CSS property to change the color of the text to Hex 3A1517 is called "color". The color property can be set on classes, ids or directly on the HTML element.

This example shows how text in the color #3A1517 looks like.

```
.text, #text, p{  
    color:#3A1517  
}
```

If you want to add a text shadow in that color use the text-shadow property, you can generate a text shadow directly with our [CSS Text Shadow Generator](#).

Here you see how black text with a 4 pixel #3A1517 colored shadow looks like.

```
.shadow{ text-shadow: 4px 4px 2px #3A1517
}
```

## Border

The CSS property to change the border of an element to Hex 3A1517 is called "border". The border property can be set on classes, ids or directly on the HTML element.

This example shows the color as border, it can be applied via the CSS property "border" or "border-color".

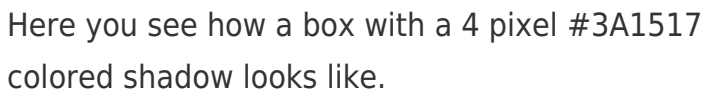
```
.border, #border, table{ border:4px solid
#3A1517 }
```

If only the border color should be changed use the property `border-color`.

```
.border{ border-color:#3A1517 }
```

If you want to add a box shadow in that color use:

Here you see how a box with a 4 pixel #3A1517 colored shadow looks like.

A rectangular box with a dark red border and a dark red shadow. The box is white with a thin dark red border on the top and left sides, and a thicker dark red shadow on the bottom and right sides.

```
.boxshadow{ -moz-box-shadow:4px 4px 4px  
4px #3A1517; -webkit-box-shadow:4px 4px  
4px 4px #3A1517; box-shadow:4px 4px 4px  
4px #3A1517 }
```

# Background

The CSS property to change the background color of an element to Hex 3A1517 is called "background". The background property can be set on classes, ids or directly on the HTML element.

```
.background, #background, body{  
background:#3A1517 }
```

If only the background color should be changed can be used:

```
.background{ background-color:#3A1517 }
```

This example shows the color as background, it is applied via the CSS property "background".

To optimize and compress your CSS code, you can use our [online CSS compressor and optimizer](#) based on csstidy. If you want to create a linear or radial gradient as background or border, check our [CSS Gradient Generator](#).



# Hey! You found this booklet interesting? Support Converting Colors with the new Membership Option!

The pro membership hides all ads, plus gives you double the colors in the color bucket, and more awesome pro features!

**[Learn more, Memberships starting at \\$2.50/m!](#)**

**Follow me  
on Twitter!**

@ConvertingColor