

Converting Colors

Hex(3B160F)

Have a look what the booklet for
Hex(3B160F) contains.

Hex(3B160F)	3
<i>Conversions</i>	4
<i>Details</i>	6
<i>Harmonies</i>	11
<i>Previews</i>	23
<i>Color Blindness Simulation</i>	26
<i>CSS Examples</i>	29

Color

Hex(3B160F)

Conversions

Conversions Part 1

Format	Color
Hex	3B160F
RGB	59, 22, 15
RGB Percent	23%, 9%, 6%
CMY	0.7686, 0.9137, 0.9412
CMYK	0.00, 0.63, 0.75, 0.77
HSL	10°, 59%, 15%
HSV	10°, 75%, 23%
XYZ	2.1768, 1.5381, 0.6341
YIQ	32.2650, 24.2990, 5.6670

Conversions

Conversions Part 2

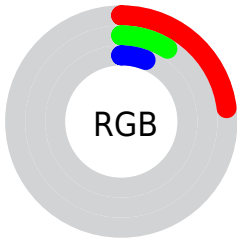
Format	Color
RYB	59, 23, 15
Decimal	3872271
CIELab	12.85, 17.64, 13.08
CIElCh	13, 21.966, 36.555
Yxy	1.5381, 0.5005, 0.3537
Android (android.graphics.Color)	4282062351 (0xFF3B160F)
YUV	32.2650, -8.5116, 23.4466
Hunter-Lab	12.4021, 9.6260, 5.6501

Details

The Hex color **3B160F** is a dark color, and the websafe version is hex **330000**. A complement of this color would be **0F343B**, and the grayscale version is **202020**.

A 20% lighter version of the original color is **6D4239**, and **000000** is the 20% darker color. If you saturate the color by 10%, you get **3B1109**, and if you desaturate by 10%, it is **3B1B15**.

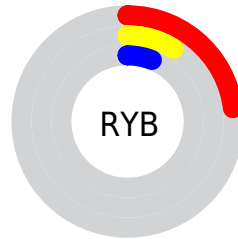
Distribution



Red (23%)

Green (9%)

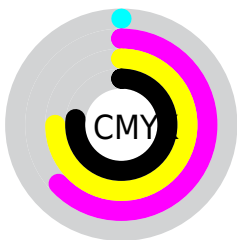
Blue (6%)



Red (23%)

Yellow (9%)

Blue (6%)

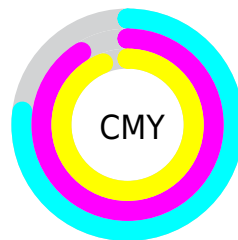


Cyan (0%)

Magenta (63%)

Yellow (75%)

Black (77%)



Cyan (77%)

Magenta (91%)

Yellow (94%)

Brightness & Saturation Gradients

These gradients show how the Hex color 3B160F changes by changing the brightness by 10 percent. The first figure shows a shift by +10% for each color and the second figure -10%.

Similar to the brightness gradients but the following saturation gradients show a change of the Hex color 3B160F by changing the saturation by 10% instead.

 3B160F

 3B160F

 FFFBEF

 250000

 6D4239

 000000

 885A50

 A37369

 BE8C82

 DBA79C

 F8C2B7

 FFDED2

 3B160F

 3B160F

■ 3B1109

■ 3B1B15

■ 3B0C03

■ 3B201B

■ 3B0900

■ 3B2521

■ 3B2A27

■ 3B2F2D

■ 3B3432

■ 3B3938

■ 3B3E3E

■ 3B4344

Harmonies

Analogous

The Analogous color harmony consists of three colors that are next to each other on the color wheel.



3D131F



3B160F



341C00

Triad

The Triadic color harmony groups three colors that are evenly spaced from another and form a triangle on the color wheel.



3B160F



002815



06223F

Complementary

The Complementary color scheme is a pair of colors which are on the opposite of each other on the color wheel.



3B160F



0F343B

Split Complementary

Split-complementary colors differ from the complementary color scheme. The scheme consists of three colors, the original color and two neighbors of the complement color.



00263D



3B160F



002924

Square

The Square scheme is like the rectangle color scheme, but the four colors are evenly spaced on the color wheel.



3B160F



172503



002833



261C3A

Rectangle

The Rectangle color scheme consists of four colors that form a rectangle on the color wheel.



3B160F



2C2000



002833



002340

Sweetspot

The Sweet Spot groups the original color and five complimentary colors.



3B160F



4D3E3C



3B0F34



261E1C



A6A6A6



262626

Same Dimension

The Same Dimension uses a secret algorithm to generate beautiful new colors.



3B160F



4D1308



3B2C0F



1F1C1C



5E0F00



DE2300

Inverse Universe

The Inverse Universe completely reimagines the original color for something new.



0F343B



08424D



0F1E3B



1C1E1F



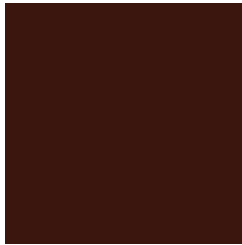
004F5E



00BBDE

Previews

White Background



This preview shows how the Hex color 3B160F looks on a white background.

Color Contrast Check

Large Text (above 18pt) WCAG AA ✓ Pass

Any Text WCAG AA ✓ Pass

Large Text (above 18pt) WCAG AAA ✓ Pass

Any Text WCAG AAA ✓ Pass

Black Background



Color Contrast Check

Large Text (above 18pt) WCAG AA × Fail

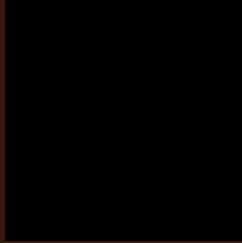
Any Text WCAG AA × Fail

Large Text (above 18pt) WCAG AAA × Fail

Any Text WCAG AAA × Fail

If you want to check with other color combinations, try the [Color Contrast Checker](#).

Hex 3B160F Background



This preview shows how black text looks on a background with the Hex color 3B160F.

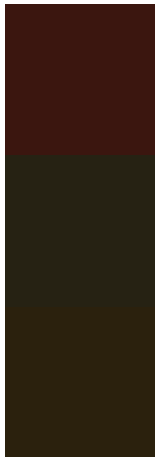


This preview shows how white text looks on a background with the Hex color 3B160F.

Color Blindness Simulation

Color vision deficiency is a very complex topic, and I could not describe the different causes any better than Wikipedia does, so if you want to learn more, you should check out their [article about color blindness](#).

Dichromacy



Original Color
3B160F

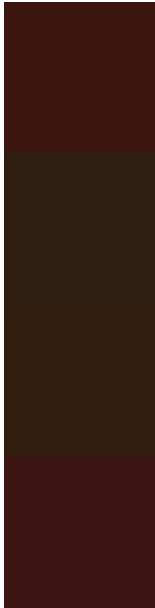
Protanopia
262213

Deuteranopia
2B210D



Tritanopia
3B1516

Trichromacy



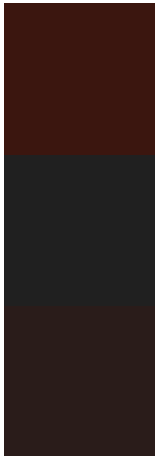
Original Color
3B160F

Protanomaly
2E1E12

Deuteranomaly
311D0E

Tritanomaly
3B1513

Monochromacy



Original Color
3B160F

Achromatopsia
202020

Achromatomaly
2A1C1A

CSS Examples

Text

The CSS property to change the color of the text to Hex 3B160F is called "color". The color property can be set on classes, ids or directly on the HTML element.

This example shows how text in the color #3B160F looks like.

```
.text, #text, p{  
    color:#3B160F  
}
```

If you want to add a text shadow in that color use the text-shadow property, you can generate a text shadow directly with our [CSS Text Shadow Generator](#).

Here you see how black text with a 4 pixel #3B160F colored shadow looks like.

```
.shadow{ text-shadow: 4px 4px 2px #3B160F
}
```

Border

The CSS property to change the border of an element to Hex 3B160F is called "border". The border property can be set on classes, ids or directly on the HTML element.

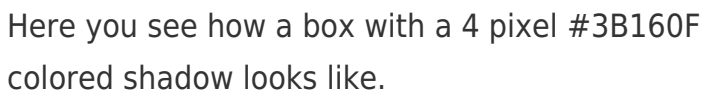
This example shows the color as border, it can be applied via the CSS property "border" or "border-color".

```
.border, #border, table{ border:4px solid
#3B160F }
```

If only the border color should be changed use the property `border-color`.

```
.border{ border-color:#3B160F }
```

If you want to add a box shadow in that color use:



Here you see how a box with a 4 pixel #3B160F colored shadow looks like.

```
.boxshadow{ -moz-box-shadow:4px 4px 4px  
4px #3B160F; -webkit-box-shadow:4px 4px  
4px 4px #3B160F; box-shadow:4px 4px 4px  
4px #3B160F }
```

Background

The CSS property to change the background color of an element to Hex 3B160F is called "background". The background property can be set on classes, ids or directly on the HTML element.

```
.background, #background, body{  
background:#3B160F }
```

If only the background color should be changed can be used:

```
.background{ background-color:#3B160F }
```

This example shows the color as background, it is applied via the CSS property "background".

To optimize and compress your CSS code, you can use our [online CSS compressor and optimizer](#) based on csstidy. If you want to create a linear or radial gradient as background or border, check our [CSS Gradient Generator](#).

Hey! You found this booklet
interesting? Support Converting
Colors with the new Membership
Option!

The pro membership hides all ads, plus gives you
double the colors in the color bucket, and more
awesome pro features!

[Learn more, Memberships starting at \\$2.50/m!](#)

**Follow me
on Twitter!**

@ConvertingColor