

# Converting Colors

Hex(3B1D19)

Have a look what the booklet for  
Hex(3B1D19) contains.

<b>Hex(3B1D19)</b> .....	3
<i><b>Conversions</b></i> .....	4
<i><b>Details</b></i> .....	6
<i><b>Harmonies</b></i> .....	11
<i><b>Previews</b></i> .....	23
<i><b>Color Blindness Simulation</b></i> .....	26
<i><b>CSS Examples</b></i> .....	29

**Color**

**Hex(3B1D19)**

# Conversions

## Conversions Part 1

Format	Color
Hex	3B1D19
RGB	59, 29, 25
RGB Percent	23%, 11%, 10%
CMY	0.7686, 0.8863, 0.9020
CMYK	0.00, 0.51, 0.58, 0.77
HSL	7°, 40%, 16%
HSV	7°, 58%, 23%
XYZ	2.4185, 1.8787, 1.1549
YIQ	37.5140, 19.1640, 5.1160

# Conversions

## Conversions Part 2

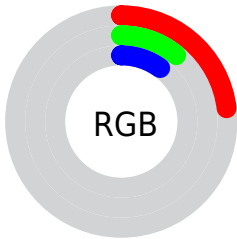
<b>Format</b>	<b>Color</b>
<b>R<sub>YB</sub></b>	59, 30, 25
Decimal	3874073
CIE <sub>Lab</sub>	14.84, 14.14, 9.23
CIE <sub>LCh</sub>	15, 16.886, 33.116
Yxy	1.8787, 0.4436, 0.3446
Android (android.graphics.Color)	4282064153 (0xFF3B1D19)
YUV	37.5140, -6.1694, 18.8432
Hunter-Lab	13.7067, 7.5087, 4.5991

# Details

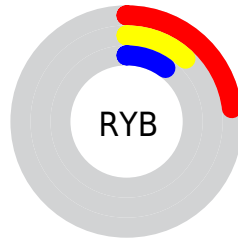
The Hex color **3B1D19** is a dark color, and the websafe version is hex **330000**. A complement of this color would be **19373B**, and the grayscale version is **262626**.

A 20% lighter version of the original color is **6C4944**, and **000000** is the 20% darker color. If you saturate the color by 10%, you get **3B1813**, and if you desaturate by 10%, it is **3B221F**.

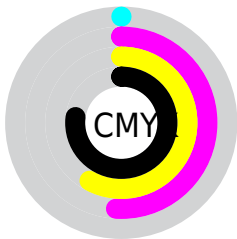
# Distribution



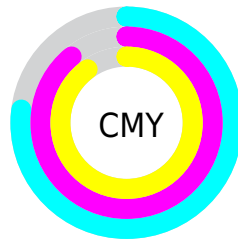
- Red (23%)
- Green (11%)
- Blue (10%)



- Red (23%)
- Yellow (12%)
- Blue (10%)



- Cyan (0%)
- Magenta (51%)
- Yellow (58%)
- Black (77%)



- Cyan (77%)
- Magenta (89%)
- Yellow (90%)

# Brightness & Saturation Gradients

These gradients show how the Hex color 3B1D19 changes by changing the brightness by 10 percent. The first figure shows a shift by +10% for each color and the second figure -10%.

Similar to the brightness gradients but the following saturation gradients show a change of the Hex color 3B1D19 by changing the saturation by 10% instead.



■ 3B1D19

■ 3B1D19

FFFFFC

■ 260600

■ 6C4944

■ 000000

■ 86615B

■ A17A74

■ BC948D

■ D8AFA8

■ F5CAC3

■ FFE6DF

■ 3B1D19

■ 3B1D19

■ 3B1813

■ 3B221F

■ 3B130D

■ 3B2725

■ 3B0D07

■ 3B2D2B

■ 3B0801

■ 3B3231

■ 3B0700

■ 3B3736

■ 3B3C3C

■ 3B4142

■ 3B4748

■ 3B4C4E

# Harmonies

## Analogous

The Analogous color harmony consists of three colors that are next to each other on the color wheel.



3B1C25



3B1D19



352110

# Triad

The Triadic color harmony groups three colors that are evenly spaced from another and form a triangle on the color wheel.



3B1D19



102B1A



14263D

# Complementary

The Complementary color scheme is a pair of colors which are on the opposite of each other on the color wheel.



3B1D19



19373B

# Split Complementary

Split-complementary colors differ from the complementary color scheme. The scheme consists of three colors, the original color and two neighbors of the complement color.



00293A



3B1D19



002B26

# Square

The Square scheme is like the rectangle color scheme, but the four colors are evenly spaced on the color wheel.



3B1D19



1F2811



002B32



282239

# Rectangle

The Rectangle color scheme consists of four colors that form a rectangle on the color wheel.



3B1D19



2F240C



002B32



0A273D



# Sweetspot

The Sweet Spot groups the original color and five complimentary colors.



3B1D19



4D413F



3B1937



261F1F



A6A6A6



262626



# Same Dimension

The Same Dimension uses a secret algorithm to generate beautiful new colors.



3B1D19



4D1E18



3B2E19



1F1C1C



5E0B00



DE1A00



# Inverse Universe

The Inverse Universe completely reimagines the original color for something new.



19373B



18464D



19263B



1C1E1F



00535E

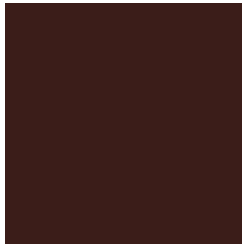


00C4DE



# Previews

## White Background



This preview shows how the Hex color 3B1D19 looks on a white background.

## Color Contrast Check

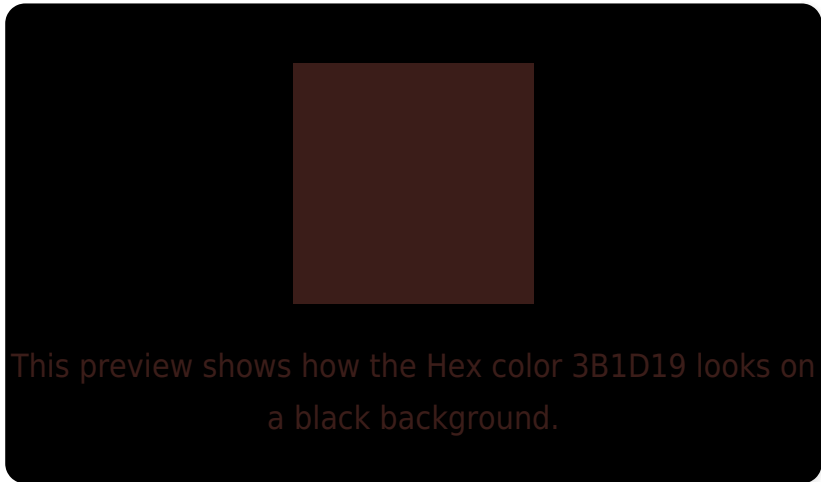
Large Text (above 18pt) WCAG AA ✓ Pass

Any Text WCAG AA ✓ Pass

Large Text (above 18pt) WCAG AAA ✓ Pass

Any Text WCAG AAA ✓ Pass

# Black Background



## Color Contrast Check

Large Text (above 18pt) WCAG AA × Fail

Any Text WCAG AA × Fail

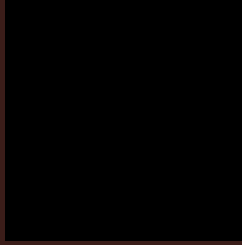
Large Text (above 18pt) WCAG AAA × Fail

Any Text WCAG AAA × Fail

If you want to check with other color combinations, try the [Color Contrast Checker](#).



## Hex 3B1D19 Background



This preview shows how black text looks on a background with the Hex color 3B1D19.



This preview shows how white text looks on a background with the Hex color 3B1D19.

# Color Blindness Simulation

Color vision deficiency is a very complex topic, and I could not describe the different causes any better than Wikipedia does, so if you want to learn more, you should check out their [article about color blindness](#).

## Dichromacy



**Original Color**  
3B1D19

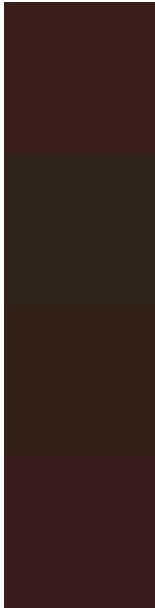
**Protanopia**  
29261D

**Deuteranopia**  
2E2418



**Tritanopia**  
3B1C1E

# Trichromacy



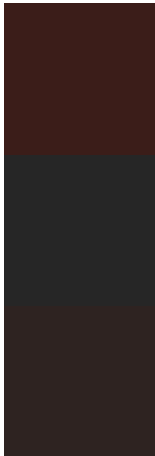
**Original Color**  
3B1D19

**Protanomaly**  
30231C

**Deuteranomaly**  
332118

**Tritanomaly**  
3B1C1C

# Monochromacy



**Original Color**  
3B1D19

**Achromatopsia**  
262626

**Achromatomaly**  
2E2321

# CSS Examples

## Text

The CSS property to change the color of the text to Hex 3B1D19 is called "color". The color property can be set on classes, ids or directly on the HTML element.

This example shows how text in the color #3B1D19 looks like.

```
.text, #text, p{  
    color:#3B1D19  
}
```

If you want to add a text shadow in that color use the text-shadow property, you can generate a text shadow directly with our [CSS Text Shadow Generator](#).

Here you see how black text with a 4 pixel #3B1D19 colored shadow looks like.

```
.shadow{ text-shadow: 4px 4px 2px #3B1D19
}
```

## Border

The CSS property to change the border of an element to Hex 3B1D19 is called "border". The border property can be set on classes, ids or directly on the HTML element.

This example shows the color as border, it can be applied via the CSS property "border" or "border-color".

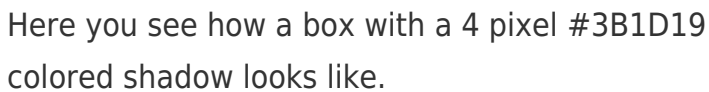
```
.border, #border, table{ border:4px solid
#3B1D19 }
```

If only the border color should be changed use the property `border-color`.

```
.border{ border-color:#3B1D19 }
```

If you want to add a box shadow in that color use:

Here you see how a box with a 4 pixel #3B1D19 colored shadow looks like.



```
.boxshadow{ -moz-box-shadow:4px 4px 4px  
4px #3B1D19; -webkit-box-shadow:4px 4px  
4px 4px #3B1D19; box-shadow:4px 4px 4px  
4px #3B1D19 }
```

# Background

The CSS property to change the background color of an element to Hex 3B1D19 is called "background". The background property can be set on classes, ids or directly on the HTML element.

```
.background, #background, body{  
background:#3B1D19 }
```

If only the background color should be changed can be used:

```
.background{ background-color:#3B1D19 }
```

This example shows the color as background, it is applied via the CSS property "background".

To optimize and compress your CSS code, you can use our [online CSS compressor and optimizer](#) based on csstidy. If you want to create a linear or radial gradient as background or border, check our [CSS Gradient Generator](#).



# Hey! You found this booklet interesting? Support Converting Colors with the new Membership Option!

The pro membership hides all ads, plus gives you double the colors in the color bucket, and more awesome pro features!

**[Learn more, Memberships starting at \\$2.50/m!](#)**

**Follow me  
on Twitter!**

@ConvertingColor