

# Converting Colors

Hex(3B1E1E)

Have a look what the booklet for  
Hex(3B1E1E) contains.

<b>Hex(3B1E1E)</b> .....	3
<i><b>Conversions</b></i> .....	4
<i><b>Details</b></i> .....	6
<i><b>Harmonies</b></i> .....	11
<i><b>Previews</b></i> .....	23
<i><b>Color Blindness Simulation</b></i> .....	26
<i><b>CSS Examples</b></i> .....	29

# Color

**Hex(3B1E1E)**

# Conversions

## Conversions Part 1

Format	Color
Hex	3B1E1E
RGB	59, 30, 30
RGB Percent	23%, 12%, 12%
CMY	0.7686, 0.8824, 0.8824
CMYK	0.00, 0.49, 0.49, 0.77
HSL	0°, 33%, 17%
HSV	0°, 49%, 23%
XYZ	2.5022, 1.9521, 1.4732
YIQ	38.6710, 17.2840, 6.1480

# Conversions

## Conversions Part 2

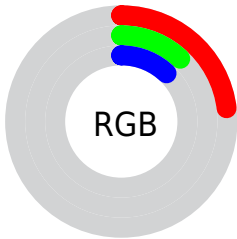
Format	Color
<b>RYB</b>	59, 30, 30
Decimal	3874334
CIELab	15.23, 14.11, 6.19
CIELCh	15, 15.413, 23.695
Yxy	1.9521, 0.4221, 0.3293
Android (android.graphics.Color)	4282064414 (0xFF3B1E1E)
YUV	38.6710, -4.2748, 17.8285
Hunter-Lab	13.9717, 7.5177, 3.5286

# Details

The Hex color **3B1E1E** is a dark color, and the websafe version is hex **330000**. A complement of this color would be **1E3B3B**, and the grayscale version is **272727**.

A 20% lighter version of the original color is **6C4A4A**, and **000000** is the 20% darker color. If you saturate the color by 10%, you get **3B1818**, and if you desaturate by 10%, it is **3B2424**.

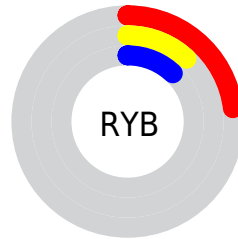
# Distribution



Red (23%)

Green (12%)

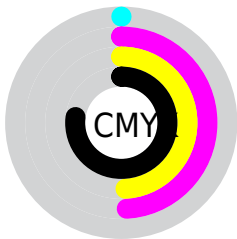
Blue (12%)



Red (23%)

Yellow (12%)

Blue (12%)

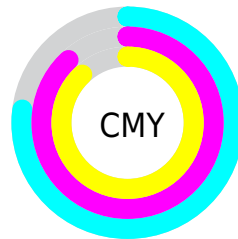


Cyan (0%)

Magenta (49%)

Yellow (49%)

Black (77%)



Cyan (77%)

Magenta (88%)

Yellow (88%)

# Brightness & Saturation Gradients

These gradients show how the Hex color 3B1E1E changes by changing the brightness by 10 percent. The first figure shows a shift by +10% for each color and the second figure -10%.

Similar to the brightness gradients but the following saturation gradients show a change of the Hex color 3B1E1E by changing the saturation by 10% instead.





3B1E1E



3B1E1E

FFFFFF



260705



6C4A4A



000000



866261



A07B7A



BC9594



D8B0AE



F4CBCA



FFE8E6



3B1E1E



3B1E1E

■ 3B1818

■ 3B2424

■ 3B1212

■ 3B2A2A

■ 3B0C0C

■ 3B3030

■ 3B0606

■ 3B3636

■ 3B0000

■ 3B3B3B

■ 3B4141

■ 3B4747

■ 3B4D4D

■ 3B5353

# Harmonies

## Analogous

The Analogous color harmony consists of three colors that are next to each other on the color wheel.



391E29



3B1E1E



372115

# Triad

The Triadic color harmony groups three colors that are evenly spaced from another and form a triangle on the color wheel.



3B1E1E



182B19



11283C

# Complementary

The Complementary color scheme is a pair of colors which are on the opposite of each other on the color wheel.



3B1E1E



1E3B3B

# Split Complementary

Split-complementary colors differ from the complementary color scheme. The scheme consists of three colors, the original color and two neighbors of the complement color.



002B37



3B1E1E



072C23

# Square

The Square scheme is like the rectangle color scheme, but the four colors are evenly spaced on the color wheel.



3B1E1E



242812



002C2F



24243A

# Rectangle

The Rectangle color scheme consists of four colors that form a rectangle on the color wheel.



3B1E1E



322311



002C2F



08293B



# Sweetspot

The Sweet Spot groups the original color and five complimentary colors.



3B1E1E



4D4141



3B1E3B



261F1F



A6A6A6



262626



# Same Dimension

The Same Dimension uses a secret algorithm to generate beautiful new colors.



3B1E1E



4D1F1F



3B2D1E



1F1C1C



5E0000



DE0000



# Inverse Universe

The Inverse Universe completely reimagines the original color for something new.



1E3B3B



1F4D4D



1E2D3B



1C1F1F



005E5E

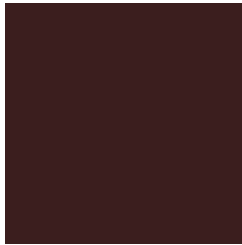


00DEDE



# Previews

## White Background



This preview shows how the Hex color 3B1E1E looks on a white background.

## Color Contrast Check

Large Text (above 18pt) WCAG AA ✓ Pass

Any Text WCAG AA ✓ Pass

Large Text (above 18pt) WCAG AAA ✓ Pass

Any Text WCAG AAA ✓ Pass

# Black Background



## Color Contrast Check

Large Text (above 18pt) WCAG AA × Fail

Any Text WCAG AA × Fail

Large Text (above 18pt) WCAG AAA × Fail

Any Text WCAG AAA × Fail

If you want to check with other color combinations, try the [Color Contrast Checker](#).



## Hex 3B1E1E Background



This preview shows how black text looks on a background with the Hex color 3B1E1E.



This preview shows how white text looks on a background with the Hex color 3B1E1E.

# Color Blindness Simulation

Color vision deficiency is a very complex topic, and I could not describe the different causes any better than Wikipedia does, so if you want to learn more, you should check out their [article about color blindness](#).

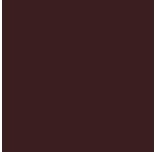
## Dichromacy



**Original Color**  
3B1E1E

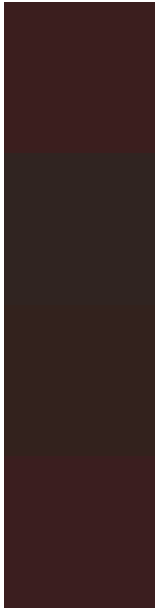
**Protanopia**  
292722

**Deuteranopia**  
2E251D



**Tritanopia**  
3B1E20

# Trichromacy



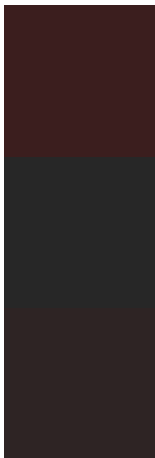
**Original Color**  
3B1E1E

**Protanomaly**  
302421

**Deuteranomaly**  
33221D

**Tritanomaly**  
3B1E1F

# Monochromacy



**Original Color**  
3B1E1E

**Achromatopsia**  
272727

**Achromatomaly**  
2E2424

# CSS Examples

## Text

The CSS property to change the color of the text to Hex 3B1E1E is called "color". The color property can be set on classes, ids or directly on the HTML element.

This example shows how text in the color #3B1E1E looks like.

```
.text, #text, p{  
    color:#3B1E1E  
}
```

If you want to add a text shadow in that color use the text-shadow property, you can generate a text shadow directly with our [CSS Text Shadow Generator](#).

Here you see how black text with a 4 pixel #3B1E1E colored shadow looks like.

```
.shadow{ text-shadow: 4px 4px 2px #3B1E1E
}
```

## Border

The CSS property to change the border of an element to Hex 3B1E1E is called "border". The border property can be set on classes, ids or directly on the HTML element.

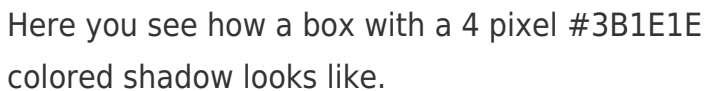
This example shows the color as border, it can be applied via the CSS property "border" or "border-color".

```
.border, #border, table{ border:4px solid
#3B1E1E }
```

If only the border color should be changed use the property `border-color`.

```
.border{ border-color:#3B1E1E }
```

If you want to add a box shadow in that color use:



Here you see how a box with a 4 pixel #3B1E1E colored shadow looks like.

```
.boxshadow{ -moz-box-shadow:4px 4px 4px  
4px #3B1E1E; -webkit-box-shadow:4px 4px  
4px 4px #3B1E1E; box-shadow:4px 4px 4px  
4px #3B1E1E }
```

# Background

The CSS property to change the background color of an element to Hex 3B1E1E is called "background". The background property can be set on classes, ids or directly on the HTML element.

```
.background, #background, body{  
background:#3B1E1E }
```

If only the background color should be changed can be used:

```
.background{ background-color:#3B1E1E }
```

This example shows the color as background, it is applied via the CSS property "background".

To optimize and compress your CSS code, you can use our [online CSS compressor and optimizer](#) based on csstidy. If you want to create a linear or radial gradient as background or border, check our [CSS Gradient Generator](#).



# Hey! You found this booklet interesting? Support Converting Colors with the new Membership Option!

The pro membership hides all ads, plus gives you double the colors in the color bucket, and more awesome pro features!

**[Learn more, Memberships starting at \\$2.50/m!](#)**

**Follow me  
on Twitter!**

@ConvertingColor