

Converting Colors

Hex(3C241B)

Have a look what the booklet for
Hex(3C241B) contains.

Hex(3C241B)	3
<i>Conversions</i>	4
<i>Details</i>	6
<i>Harmonies</i>	11
<i>Previews</i>	23
<i>Color Blindness Simulation</i>	26
<i>CSS Examples</i>	29

Color

Hex(3C241B)

Conversions

Conversions Part 1

Format	Color
Hex	3C241B
RGB	60, 36, 27
RGB Percent	24%, 14%, 11%
CMY	0.7647, 0.8588, 0.8941
CMYK	0.00, 0.40, 0.55, 0.76
HSL	16°, 38%, 17%
HSV	16°, 55%, 24%
XYZ	2.6922, 2.3015, 1.3393
YIQ	42.1500, 17.1930, 2.2890

Conversions

Conversions Part 2

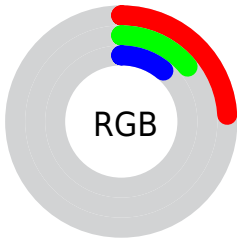
Format	Color
RYB	60, 39, 27
Decimal	3941403
CIELab	17.00, 10.19, 10.72
CIElCh	17, 14.792, 46.463
Yxy	2.3015, 0.4251, 0.3634
Android (android.graphics.Color)	4282131483 (0xFF3C241B)
YUV	42.1500, -7.4689, 15.6545
Hunter-Lab	15.1708, 5.1273, 5.3856

Details

The Hex color **3C241B** is a dark color, and the websafe version is hex **333333**. A complement of this color would be **1B333C**, and the grayscale version is **2A2A2A**.

A 20% lighter version of the original color is **6D5146**, and **000000** is the 20% darker color. If you saturate the color by 10%, you get **3C2015**, and if you desaturate by 10%, it is **3C2821**.

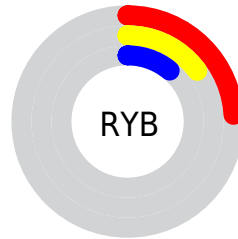
Distribution



Red (24%)

Green (14%)

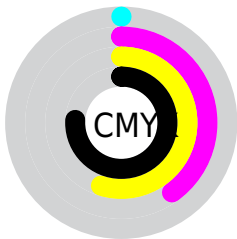
Blue (11%)



Red (24%)

Yellow (15%)

Blue (11%)

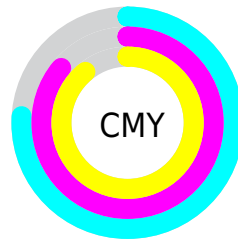


Cyan (0%)

Magenta (40%)

Yellow (55%)

Black (76%)



Cyan (76%)

Magenta (86%)

Yellow (89%)

Brightness & Saturation Gradients

These gradients show how the Hex color 3C241B changes by changing the brightness by 10 percent. The first figure shows a shift by +10% for each color and the second figure -10%.

Similar to the brightness gradients but the following saturation gradients show a change of the Hex color 3C241B by changing the saturation by 10% instead.



3C241B



3C241B

FFFFFF



260F00



6D5146



000000



87695E



A18277



BD9C90



D9B7AB



F5D3C6



FFEF2



3C241B



3C241B

■ 3C2015

■ 3C2821

■ 3C1B0F

■ 3C2D27

■ 3C1709

■ 3C312D

■ 3C1303

■ 3C3533

■ 3C1000

■ 3C3A39

■ 3C3E3F

■ 3C4345

■ 3C474B

■ 3C4B51

Harmonies

Analogous

The Analogous color harmony consists of three colors that are next to each other on the color wheel.



3F2224



3C241B



352815

Triad

The Triadic color harmony groups three colors that are evenly spaced from another and form a triangle on the color wheel.



3C241B



112F25



24293E

Complementary

The Complementary color scheme is a pair of colors which are on the opposite of each other on the color wheel.



3C241B



1B333C

Split Complementary

Split-complementary colors differ from the complementary color scheme. The scheme consists of three colors, the original color and two neighbors of the complement color.



122C3E



3C241B



03302F

Square

The Square scheme is like the rectangle color scheme, but the four colors are evenly spaced on the color wheel.



3C241B



1F2E1B



012F39



322539

Rectangle

The Rectangle color scheme consists of four colors that form a rectangle on the color wheel.



3C241B



2F2A15



012F39



1E2A3F

Sweetspot

The Sweet Spot groups the original color and five complimentary colors.



3C241B



4F4542



3C1B33



292321



A8A8A8



292929

Same Dimension

The Same Dimension uses a secret algorithm to generate beautiful new colors.



3C241B



4F291B



3C341B



1F1C1C



5E1A00



DE3D00

Inverse Universe

The Inverse Universe completely reimagines the original color for something new.



1B333C



1B414F



1B233C



1C1E1F



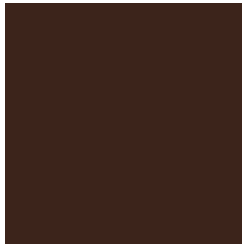
00455E



00A1DE

Previews

White Background



This preview shows how the Hex color 3C241B looks on a white background.

Color Contrast Check

Large Text (above 18pt) WCAG AA ✓ Pass

Any Text WCAG AA ✓ Pass

Large Text (above 18pt) WCAG AAA ✓ Pass

Any Text WCAG AAA ✓ Pass

Black Background



Color Contrast Check

Large Text (above 18pt) WCAG AA × Fail

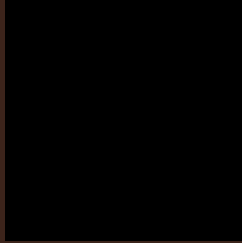
Any Text WCAG AA × Fail

Large Text (above 18pt) WCAG AAA × Fail

Any Text WCAG AAA × Fail

If you want to check with other color combinations, try the [Color Contrast Checker](#).

Hex 3C241B Background



This preview shows how black text looks on a background with the Hex color 3C241B.

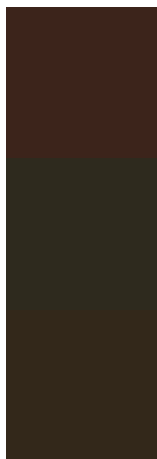


This preview shows how white text looks on a background with the Hex color 3C241B.

Color Blindness Simulation

Color vision deficiency is a very complex topic, and I could not describe the different causes any better than Wikipedia does, so if you want to learn more, you should check out their [article about color blindness](#).

Dichromacy

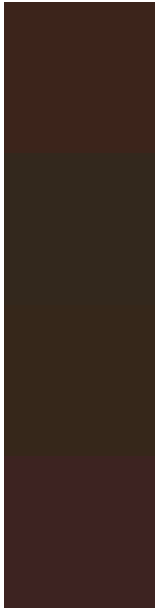


Original Color
3C241B

Protanopia
2E2A1E

Deuteranopia
33281A

Trichromacy



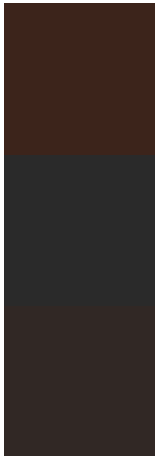
Original Color
3C241B

Protanomaly
33281D

Deuteranomaly
36271A

Tritanomaly
3D2321

Monochromacy



Original Color
3C241B

Achromatopsia
2A2A2A

Achromatomaly
312825

CSS Examples

Text

The CSS property to change the color of the text to Hex 3C241B is called "color". The color property can be set on classes, ids or directly on the HTML element.

This example shows how text in the color #3C241B looks like.

```
.text, #text, p{  
    color:#3C241B  
}
```

If you want to add a text shadow in that color use the text-shadow property, you can generate a text shadow directly with our [CSS Text Shadow Generator](#).

Here you see how black text with a 4 pixel #3C241B colored shadow looks like.

```
.shadow{ text-shadow: 4px 4px 2px #3C241B
}
```

Border

The CSS property to change the border of an element to Hex 3C241B is called "border". The border property can be set on classes, ids or directly on the HTML element.

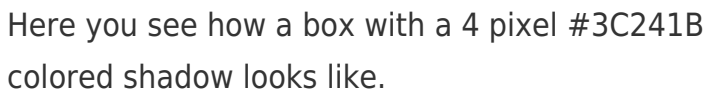
This example shows the color as border, it can be applied via the CSS property "border" or "border-color".

```
.border, #border, table{ border:4px solid
#3C241B }
```

If only the border color should be changed use the property `border-color`.

```
.border{ border-color:#3C241B }
```

If you want to add a box shadow in that color use:



Here you see how a box with a 4 pixel #3C241B colored shadow looks like.

```
.boxshadow{ -moz-box-shadow:4px 4px 4px  
4px #3C241B; -webkit-box-shadow:4px 4px  
4px 4px #3C241B; box-shadow:4px 4px 4px  
4px #3C241B }
```

Background

The CSS property to change the background color of an element to Hex 3C241B is called "background". The background property can be set on classes, ids or directly on the HTML element.

```
.background, #background, body{  
background:#3C241B }
```

If only the background color should be changed can be used:

```
.background{ background-color:#3C241B }
```

This example shows the color as background, it is applied via the CSS property "background".

To optimize and compress your CSS code, you can use our [online CSS compressor and optimizer](#) based on csstidy. If you want to create a linear or radial gradient as background or border, check our [CSS Gradient Generator](#).

Hey! You found this booklet interesting? Support Converting Colors with the new Membership Option!

The pro membership hides all ads, plus gives you double the colors in the color bucket, and more awesome pro features!

[Learn more, Memberships starting at \\$2.50/m!](#)

**Follow me
on Twitter!**

@ConvertingColor