

Converting Colors

Hex(3C2822)

Have a look what the booklet for
Hex(3C2822) contains.

Hex(3C2822)	3
<i>Conversions</i>	4
<i>Details</i>	6
<i>Harmonies</i>	11
<i>Previews</i>	23
<i>Color Blindness Simulation</i>	26
<i>CSS Examples</i>	29

Color

Hex(3C2822)

Conversions

Conversions Part 1	
Format	Color
Hex	3C2822
RGB	60, 40, 34
RGB Percent	24%, 16%, 13%
CMY	0.7647, 0.8431, 0.8667
CMYK	0.00, 0.33, 0.43, 0.76
HSL	14°, 28%, 18%
HSV	14°, 43%, 24%
XYZ	2.9110, 2.5937, 1.8606
YIQ	45.2960, 13.8460, 2.3740

Conversions

Conversions Part 2

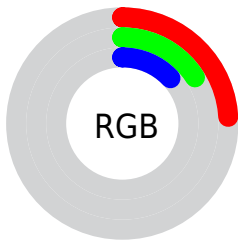
Format	Color
RYB	60, 42, 34
Decimal	3942434
CIELab	18.34, 8.43, 7.69
CIELCh	18, 11.410, 42.362
Yxy	2.5937, 0.3952, 0.3522
Android (android.graphics.Color)	4282132514 (0xFF3C2822)
YUV	45.2960, -5.5689, 12.8954
Hunter-Lab	16.1051, 4.0801, 4.4239

Details

The Hex color **3C2822** is a dark color, and the websafe version is hex **333333**. A complement of this color would be **22363C**, and the grayscale version is **2D2D2D**.

A 20% lighter version of the original color is **6C554E**, and **030000** is the 20% darker color. If you saturate the color by 10%, you get **3C231C**, and if you desaturate by 10%, it is **3C2D28**.

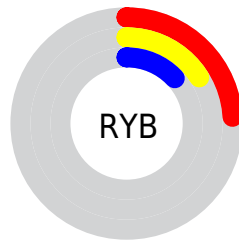
Distribution



Red (24%)

Green (16%)

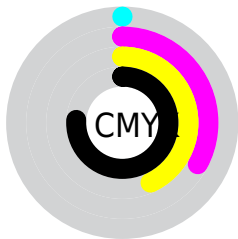
Blue (13%)



Red (24%)

Yellow (16%)

Blue (13%)

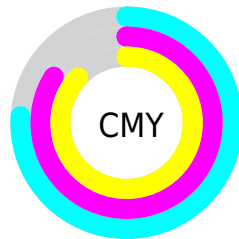


Cyan (0%)

Magenta (33%)

Yellow (43%)

Black (76%)



Cyan (76%)

Magenta (84%)

Yellow (87%)

Brightness & Saturation Gradients

These gradients show how the Hex color 3C2822 changes by changing the brightness by 10 percent. The first figure shows a shift by +10% for each color and the second figure -10%.

Similar to the brightness gradients but the following saturation gradients show a change of the Hex color 3C2822 by changing the saturation by 10% instead.

 3C2822

 3C2822

FFFFFF

 26140C

 6C554E

 030000

 866D66

 000000

 A0877F

 BCA199

 D7BCB4

 F4D8CF

 FFF4EC

 3C2822

 3C2822

 3C231C

 3C2D28

 3C1F16

 3C312E

 3C1A10

 3C3634

 3C160A

 3C3A3A

 3C1104

 3C3F40

 3C0E00

 3C4446

 3C484C

 3C4D52

 3C5258

Harmonies

Analogous

The Analogous color harmony consists of three colors that are next to each other on the color wheel.



3D272A



3C2822



372B1D

Triad

The Triadic color harmony groups three colors that are evenly spaced from another and form a triangle on the color wheel.



3C2822



1C3127



272C3D

Complementary

The Complementary color scheme is a pair of colors which are on the opposite of each other on the color wheel.



3C2822



22363C

Split Complementary

Split-complementary colors differ from the complementary color scheme. The scheme consists of three colors, the original color and two neighbors of the complement color.



1B2F3C



3C2822



153130

Square

The Square scheme is like the rectangle color scheme, but the four colors are evenly spaced on the color wheel.



3C2822



263020



143138



322939

Rectangle

The Rectangle color scheme consists of four colors that form a rectangle on the color wheel.



3C2822



322C1C



143138



232D3D

Sweetspot

The Sweet Spot groups the original color and five complimentary colors.



3C2822



4F4745



3C2236



292422



A8A8A8



292929

Same Dimension

The Same Dimension uses a secret algorithm to generate beautiful new colors.



3C2822



4F2F26



3C3522



1F1C1C



5E1600



DE3300

Inverse Universe

The Inverse Universe completely reimagines the original color for something new.



22363C



26464F



22293C



1C1E1F



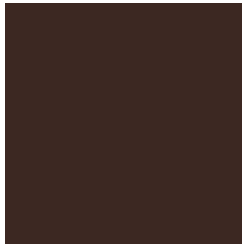
00495E



00ABDE

Previews

White Background



This preview shows how the Hex color 3C2822 looks on a white background.

Color Contrast Check

Large Text (above 18pt) WCAG AA ✓ Pass

Any Text WCAG AA ✓ Pass

Large Text (above 18pt) WCAG AAA ✓ Pass

Any Text WCAG AAA ✓ Pass

Black Background



Color Contrast Check

Large Text (above 18pt) WCAG AA × Fail

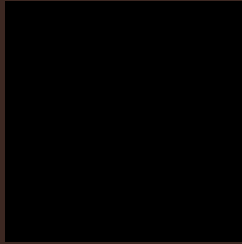
Any Text WCAG AA × Fail

Large Text (above 18pt) WCAG AAA × Fail

Any Text WCAG AAA × Fail

If you want to check with other color combinations, try the [Color Contrast Checker](#).

Hex 3C2822 Background



This preview shows how black text looks on a background with the Hex color 3C2822.

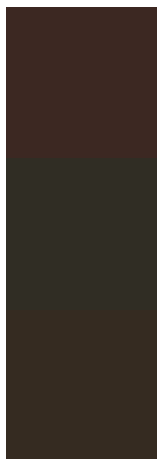


This preview shows how white text looks on a background with the Hex color 3C2822.

Color Blindness Simulation

Color vision deficiency is a very complex topic, and I could not describe the different causes any better than Wikipedia does, so if you want to learn more, you should check out their [article about color blindness](#).

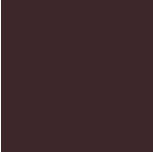
Dichromacy



Original Color
[3C2822](#)

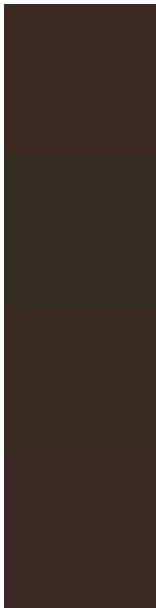
Protanopia
[302D24](#)

Deuteranopia
[352B21](#)



Tritanopia
3D272A

Trichromacy



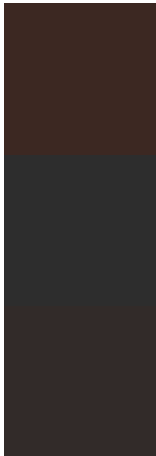
Original Color
3C2822

Protanomaly
342B23

Deuteranomaly
382A21

Tritanomaly
3D2727

Monochromacy



Original Color
3C2822

Achromatopsia
2D2D2D

Achromatomaly
322B29

CSS Examples

Text

The CSS property to change the color of the text to Hex 3C2822 is called "color". The color property can be set on classes, ids or directly on the HTML element.

This example shows how text in the color #3C2822 looks like.

```
.text, #text, p{  
    color:#3C2822  
}
```

If you want to add a text shadow in that color use the text-shadow property, you can generate a text shadow directly with our [CSS Text Shadow Generator](#).

Here you see how black text with a 4 pixel #3C2822 colored shadow looks like.

```
.shadow{ text-shadow: 4px 4px 2px #3C2822
}
```

Border

The CSS property to change the border of an element to Hex 3C2822 is called "border". The border property can be set on classes, ids or directly on the HTML element.

This example shows the color as border, it can be applied via the CSS property "border" or "border-color".

```
.border, #border, table{ border:4px solid
#3C2822 }
```

If only the border color should be changed use the property `border-color`.

```
.border{ border-color:#3C2822 }
```

If you want to add a box shadow in that color use:

Here you see how a box with a 4 pixel #3C2822 colored shadow looks like.

```
.boxshadow{ -moz-box-shadow:4px 4px 4px  
4px #3C2822; -webkit-box-shadow:4px 4px  
4px 4px #3C2822; box-shadow:4px 4px 4px  
4px #3C2822 }
```

Background

The CSS property to change the background color of an element to Hex 3C2822 is called "background". The background property can be set on classes, ids or directly on the HTML element.

```
.background, #background, body{  
background:#3C2822 }
```

If only the background color should be changed can be used:

```
.background{ background-color:#3C2822 }
```

This example shows the color as background, it is applied via the CSS property "background".

To optimize and compress your CSS code, you can use our [online CSS compressor and optimizer](#) based on csstidy. If you want to create a linear or radial gradient as background or border, check our [CSS Gradient Generator](#).

Hey! You found this booklet
interesting? Support Converting
Colors with the new Membership
Option!

The pro membership hides all ads, plus gives you
double the colors in the color bucket, and more
awesome pro features!

[Learn more, Memberships starting at \\$2.50/m!](#)

**Follow me
on Twitter!**

@ConvertingColor