

Converting Colors

Hex(3C2A2A)

Have a look what the booklet for
Hex(3C2A2A) contains.

Hex(3C2A2A)	3
<i>Conversions</i>	4
<i>Details</i>	6
<i>Harmonies</i>	11
<i>Previews</i>	23
<i>Color Blindness Simulation</i>	26
<i>CSS Examples</i>	29

Color

Hex(3C2A2A)

Conversions

Conversions Part 1

Format	Color
Hex	3C2A2A
RGB	60, 42, 42
RGB Percent	24%, 16%, 16%
CMY	0.7647, 0.8353, 0.8353
CMYK	0.00, 0.30, 0.30, 0.76
HSL	0°, 18%, 20%
HSV	0°, 30%, 24%
XYZ	3.1094, 2.7838, 2.5639
YIQ	47.3820, 10.7280, 3.8160

Conversions

Conversions Part 2

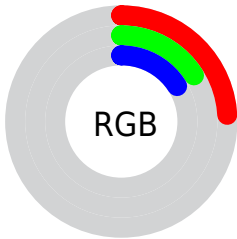
Format	Color
RYB	60, 42, 42
Decimal	3942954
CIELab	19.16, 8.38, 3.29
CIELCh	19, 8.999, 21.437
Yxy	2.7838, 0.3677, 0.3292
Android (android.graphics.Color)	4282133034 (0xFF3C2A2A)
YUV	47.3820, -2.6533, 11.0660
Hunter-Lab	16.6846, 4.0675, 2.5681

Details

The Hex color **3C2A2A** is a dark color, and the websafe version is hex **333333**. A complement of this color would be **2A3C3C**, and the grayscale version is **2F2F2F**.

A 20% lighter version of the original color is **6C5757**, and **0C0000** is the 20% darker color. If you saturate the color by 10%, you get **3C2424**, and if you desaturate by 10%, it is **3C3030**.

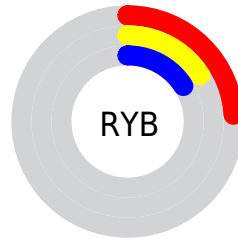
Distribution



Red (24%)

Green (16%)

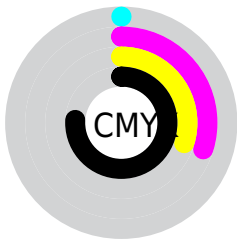
Blue (16%)



Red (24%)

Yellow (16%)

Blue (16%)

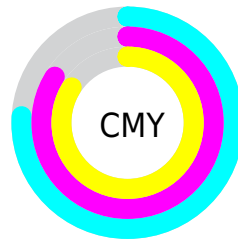


Cyan (0%)

Magenta (30%)

Yellow (30%)

Black (76%)



Cyan (76%)

Magenta (84%)

Yellow (84%)

Brightness & Saturation Gradients

These gradients show how the Hex color 3C2A2A changes by changing the brightness by 10 percent. The first figure shows a shift by +10% for each color and the second figure -10%.

Similar to the brightness gradients but the following saturation gradients show a change of the Hex color 3C2A2A by changing the saturation by 10% instead.

■ 3C2A2A

■ 3C2A2A

FFFFFF

■ 261516

■ 6C5757

■ 0C0000

■ 857070

■ 000000

■ A08989

■ BBA4A3

■ D6BFBE

■ F3DADA

■ FFF7F6

■ 3C2A2A

■ 3C2A2A

■ 3C2424

■ 3C3030

■ 3C1E1E

■ 3C3636

■ 3C1818

■ 3C3C3C

■ 3C1212

■ 3C4242

■ 3C0C0C

■ 3C4848

■ 3C0606

■ 3C4E4E

■ 3C0000

■ 3C5454

■ 3C5A5A

■ 3C6060

Harmonies

Analogous

The Analogous color harmony consists of three colors that are next to each other on the color wheel.



3A2A31



3C2A2A



3A2B25

Triad

The Triadic color harmony groups three colors that are evenly spaced from another and form a triangle on the color wheel.



3C2A2A



273126



24303B

Complementary

The Complementary color scheme is a pair of colors which are on the opposite of each other on the color wheel.



3C2A2A



2A3C3C

Split Complementary

Split-complementary colors differ from the complementary color scheme. The scheme consists of three colors, the original color and two neighbors of the complement color.



1E3138



3C2A2A



20322C

Square

The Square scheme is like the rectangle color scheme, but the four colors are evenly spaced on the color wheel.



3C2A2A



2E3022



1C3233



2D2D3B

Rectangle

The Rectangle color scheme consists of four colors that form a rectangle on the color wheel.



3C2A2A



372D22



1C3233



22303B

Sweetspot

The Sweet Spot groups the original color and five complimentary colors.



3C2A2A



4F4848



3C2A3C



292424



A8A8A8



292929

Same Dimension

The Same Dimension uses a secret algorithm to generate beautiful new colors.



3C2A2A



4F3333



3C332A



1F1C1C



5E0000



DE0000

Inverse Universe

The Inverse Universe completely reimagines the original color for something new.



2A3C3C



334F4F



2A333C



1C1F1F



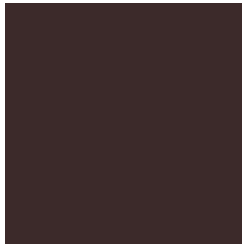
005E5E



00DEDE

Previews

White Background



This preview shows how the Hex color 3C2A2A looks on a white background.

Color Contrast Check

Large Text (above 18pt) WCAG AA ✓ Pass

Any Text WCAG AA ✓ Pass

Large Text (above 18pt) WCAG AAA ✓ Pass

Any Text WCAG AAA ✓ Pass

Black Background



Color Contrast Check

Large Text (above 18pt) WCAG AA × Fail

Any Text WCAG AA × Fail

Large Text (above 18pt) WCAG AAA × Fail

Any Text WCAG AAA × Fail

If you want to check with other color combinations, try the [Color Contrast Checker](#).

Hex 3C2A2A Background



This preview shows how black text looks on a background with the Hex color 3C2A2A.

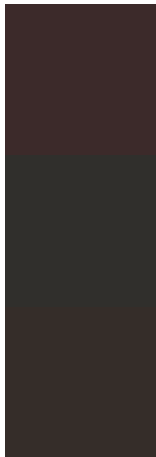


This preview shows how white text looks on a background with the Hex color 3C2A2A.

Color Blindness Simulation

Color vision deficiency is a very complex topic, and I could not describe the different causes any better than Wikipedia does, so if you want to learn more, you should check out their [article about color blindness](#).

Dichromacy



Original Color
3C2A2A

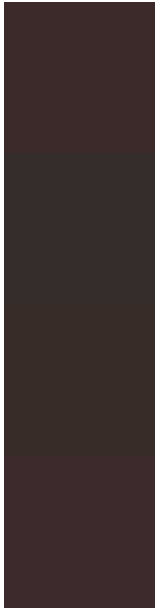
Protanopia
302F2C

Deuteranopia
352D29



Tritanopia
3C2A2D

Trichromacy



Original Color

3C2A2A

Protanomaly

342D2B

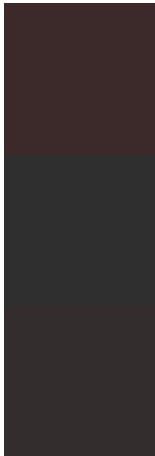
Deuteranomaly

382C29

Tritanomaly

3C2A2C

Monochromacy



Original Color

3C2A2A

Achromatopsia

2F2F2F

Achromatomaly

342D2D

CSS Examples

Text

The CSS property to change the color of the text to Hex 3C2A2A is called "color". The color property can be set on classes, ids or directly on the HTML element.

This example shows how text in the color #3C2A2A looks like.

```
.text, #text, p{  
    color:#3C2A2A  
}
```

If you want to add a text shadow in that color use the text-shadow property, you can generate a text shadow directly with our [CSS Text Shadow Generator](#).

Here you see how black text with a 4 pixel #3C2A2A colored shadow looks like.

```
.shadow{ text-shadow: 4px 4px 2px #3C2A2A
}
```

Border

The CSS property to change the border of an element to Hex 3C2A2A is called "border". The border property can be set on classes, ids or directly on the HTML element.

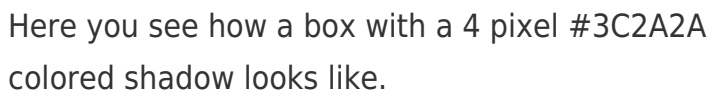
This example shows the color as border, it can be applied via the CSS property "border" or "border-color".

```
.border, #border, table{ border:4px solid
#3C2A2A }
```

If only the border color should be changed use the property `border-color`.

```
.border{ border-color:#3C2A2A }
```

If you want to add a box shadow in that color use:



Here you see how a box with a 4 pixel #3C2A2A colored shadow looks like.

```
.boxshadow{ -moz-box-shadow:4px 4px 4px  
4px #3C2A2A; -webkit-box-shadow:4px 4px  
4px 4px #3C2A2A; box-shadow:4px 4px 4px  
4px #3C2A2A }
```

Background

The CSS property to change the background color of an element to Hex 3C2A2A is called "background". The background property can be set on classes, ids or directly on the HTML element.

```
.background, #background, body{  
background:#3C2A2A }
```

If only the background color should be changed can be used:

```
.background{ background-color:#3C2A2A }
```

This example shows the color as background, it is applied via the CSS property "background".

To optimize and compress your CSS code, you can use our [online CSS compressor and optimizer](#) based on csstidy. If you want to create a linear or radial gradient as background or border, check our [CSS Gradient Generator](#).

Hey! You found this booklet
interesting? Support Converting
Colors with the new Membership
Option!

The pro membership hides all ads, plus gives you
double the colors in the color bucket, and more
awesome pro features!

[Learn more, Memberships starting at \\$2.50/m!](#)

**Follow me
on Twitter!**

@ConvertingColor