

Converting Colors

Hex(3D2929)

Have a look what the booklet for
Hex(3D2929) contains.

Hex(3D2929)	3
<i>Conversions</i>	4
<i>Details</i>	6
<i>Harmonies</i>	11
<i>Previews</i>	23
<i>Color Blindness Simulation</i>	26
<i>CSS Examples</i>	29

Color

Hex(3D2929)

Conversions

Conversions Part 1

Format	Color
Hex	3D2929
RGB	61, 41, 41
RGB Percent	24%, 16%, 16%
CMY	0.7608, 0.8392, 0.8392
CMYK	0.00, 0.33, 0.33, 0.76
HSL	0°, 20%, 20%
HSV	0°, 33%, 24%
XYZ	3.1176, 2.7381, 2.4620
YIQ	46.9800, 11.9200, 4.2400

Conversions

Conversions Part 2

Format	Color
RYB	61, 41, 41
Decimal	4008233
CIELab	18.96, 9.35, 3.73
CIELCh	19, 10.067, 21.720
Yxy	2.7381, 0.3748, 0.3292
Android (android.graphics.Color)	4282198313 (0xFF3D2929)
YUV	46.9800, -2.9481, 12.2955
Hunter-Lab	16.5471, 4.6738, 2.7614

Details

The Hex color **3D2929** is a dark color, and the websafe version is hex **333333**. A complement of this color would be **293D3D**, and the grayscale version is **2F2F2F**.

A 20% lighter version of the original color is **6D5656**, and **0D0000** is the 20% darker color. If you saturate the color by 10%, you get **3D2323**, and if you desaturate by 10%, it is **3D2F2F**.

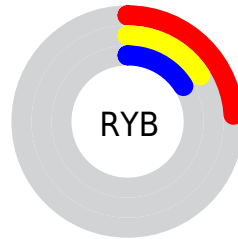
Distribution



Red (24%)

Green (16%)

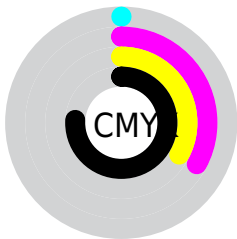
Blue (16%)



Red (24%)

Yellow (16%)

Blue (16%)

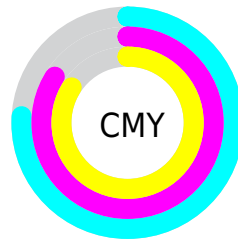


Cyan (0%)

Magenta (33%)

Yellow (33%)

Black (76%)



Cyan (76%)

Magenta (84%)

Yellow (84%)

Brightness & Saturation Gradients

These gradients show how the Hex color 3D2929 changes by changing the brightness by 10 percent. The first figure shows a shift by +10% for each color and the second figure -10%.

Similar to the brightness gradients but the following saturation gradients show a change of the Hex color 3D2929 by changing the saturation by 10% instead.



3D2929



3D2929

FFFFFF



271515



6D5656



0D0000



876F6E



000000



A18888



BCA2A2



D8BDBD



F5D9D9



FFF6F5



3D2929



3D2929

■ 3D2323

■ 3D2F2F

■ 3D1D1D

■ 3D3535

■ 3D1717

■ 3D3B3B

■ 3D1111

■ 3D4141

■ 3D0B0B

■ 3D4848

■ 3D0404

■ 3D4E4E

■ 3D0000

■ 3D5454

■ 3D5A5A

■ 3D6060

Harmonies

Analogous

The Analogous color harmony consists of three colors that are next to each other on the color wheel.



3B2930



3D2929



3B2B23

Triad

The Triadic color harmony groups three colors that are evenly spaced from another and form a triangle on the color wheel.



3D2929



263125



222F3C

Complementary

The Complementary color scheme is a pair of colors which are on the opposite of each other on the color wheel.



3D2929



293D3D

Split Complementary

Split-complementary colors differ from the complementary color scheme. The scheme consists of three colors, the original color and two neighbors of the complement color.



1B3139



3D2929



1E322C

Square

The Square scheme is like the rectangle color scheme, but the four colors are evenly spaced on the color wheel.



3D2929



2E2F20



193233



2D2D3C

Rectangle

The Rectangle color scheme consists of four colors that form a rectangle on the color wheel.



3D2929



372C20



193233



1F303C

Sweetspot

The Sweet Spot groups the original color and five complimentary colors.



3D2929



4F4747



3D293D



292424



A8A8A8



292929

Same Dimension

The Same Dimension uses a secret algorithm to generate beautiful new colors.



3D2929



4F3030



3D3329



1F1C1C



5E0000



DE0000

Inverse Universe

The Inverse Universe completely reimagines the original color for something new.



293D3D



304F4F



29333D



1C1F1F



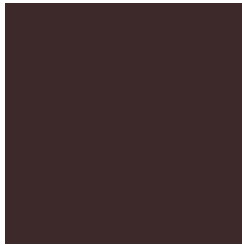
005E5E



00DEDE

Previews

White Background



This preview shows how the Hex color 3D2929 looks on a white background.

Color Contrast Check

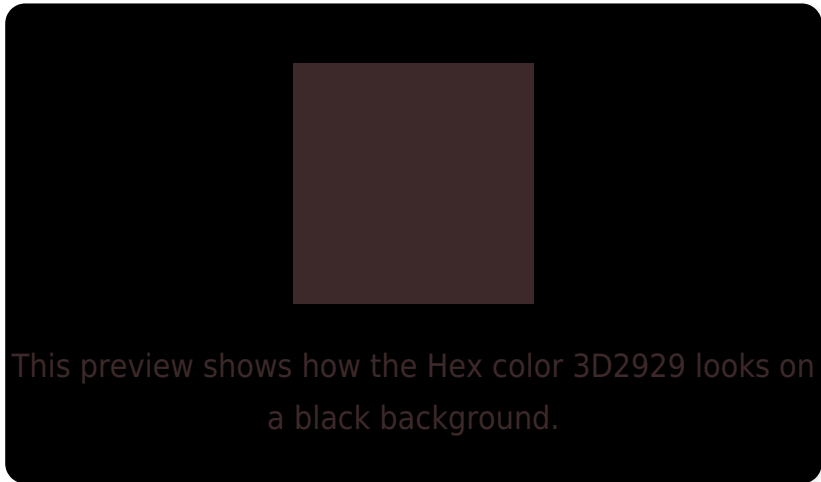
Large Text (above 18pt) WCAG AA ✓ Pass

Any Text WCAG AA ✓ Pass

Large Text (above 18pt) WCAG AAA ✓ Pass

Any Text WCAG AAA ✓ Pass

Black Background



Color Contrast Check

Large Text (above 18pt) WCAG AA × Fail

Any Text WCAG AA × Fail

Large Text (above 18pt) WCAG AAA × Fail

Any Text WCAG AAA × Fail

If you want to check with other color combinations, try the [Color Contrast Checker](#).

Hex 3D2929 Background



This preview shows how black text looks on a background with the Hex color 3D2929.

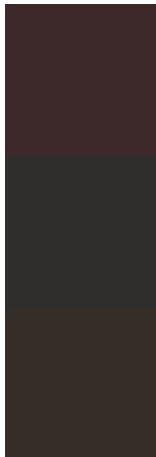


This preview shows how white text looks on a background with the Hex color 3D2929.

Color Blindness Simulation

Color vision deficiency is a very complex topic, and I could not describe the different causes any better than Wikipedia does, so if you want to learn more, you should check out their [article about color blindness](#).

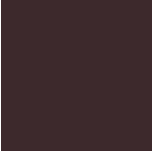
Dichromacy



Original Color
3D2929

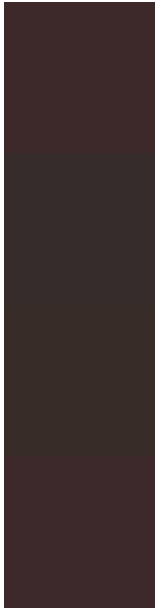
Protanopia
302E2C

Deuteranopia
352D28



Tritanopia
3D292C

Trichromacy



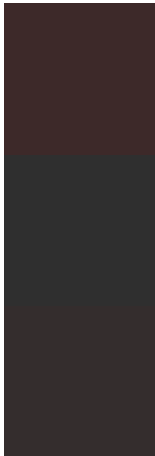
Original Color
3D2929

Protanomaly
352C2B

Deuteranomaly
382C28

Tritanomaly
3D292B

Monochromacy



Original Color
3D2929

Achromatopsia
2F2F2F

Achromatomaly
342D2D

CSS Examples

Text

The CSS property to change the color of the text to Hex 3D2929 is called "color". The color property can be set on classes, ids or directly on the HTML element.

This example shows how text in the color #3D2929 looks like.

```
.text, #text, p{  
    color:#3D2929  
}
```

If you want to add a text shadow in that color use the text-shadow property, you can generate a text shadow directly with our [CSS Text Shadow Generator](#).

Here you see how black text with a 4 pixel #3D2929 colored shadow looks like.

```
.shadow{ text-shadow: 4px 4px 2px #3D2929
}
```

Border

The CSS property to change the border of an element to Hex 3D2929 is called "border". The border property can be set on classes, ids or directly on the HTML element.

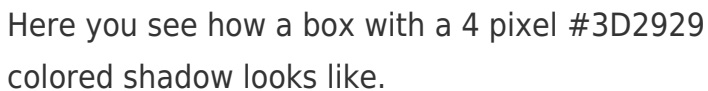
This example shows the color as border, it can be applied via the CSS property "border" or "border-color".

```
.border, #border, table{ border:4px solid
#3D2929 }
```

If only the border color should be changed use the property `border-color`.

```
.border{ border-color:#3D2929 }
```

If you want to add a box shadow in that color use:



Here you see how a box with a 4 pixel #3D2929 colored shadow looks like.

```
.boxshadow{ -moz-box-shadow:4px 4px 4px  
4px #3D2929; -webkit-box-shadow:4px 4px  
4px 4px #3D2929; box-shadow:4px 4px 4px  
4px #3D2929 }
```

Background

The CSS property to change the background color of an element to Hex 3D2929 is called "background". The background property can be set on classes, ids or directly on the HTML element.

```
.background, #background, body{  
background:#3D2929 }
```

If only the background color should be changed can be used:

```
.background{ background-color:#3D2929 }
```

This example shows the color as background, it is applied via the CSS property "background".

To optimize and compress your CSS code, you can use our [online CSS compressor and optimizer](#) based on csstidy. If you want to create a linear or radial gradient as background or border, check our [CSS Gradient Generator](#).

Hey! You found this booklet interesting? Support Converting Colors with the new Membership Option!

The pro membership hides all ads, plus gives you double the colors in the color bucket, and more awesome pro features!

[Learn more, Memberships starting at \\$2.50/m!](#)

**Follow me
on Twitter!**

@ConvertingColor