

Converting Colors

Hex(3D2F20)

Have a look what the booklet for
Hex(3D2F20) contains.

Hex(3D2F20)	3
<i>Conversions</i>	4
<i>Details</i>	6
<i>Harmonies</i>	11
<i>Previews</i>	23
<i>Color Blindness Simulation</i>	26
<i>CSS Examples</i>	29

Color

Hex(3D2F20)

Conversions

Conversions Part 1

Format	Color
Hex	3D2F20
RGB	61, 47, 32
RGB Percent	24%, 18%, 13%
CMY	0.7608, 0.8157, 0.8745
CMYK	0.00, 0.23, 0.48, 0.76
HSL	31°, 31%, 18%
HSV	31°, 48%, 24%
XYZ	3.2017, 3.1294, 1.8018
YIQ	49.4760, 13.1590, -1.6970

Conversions

Conversions Part 2

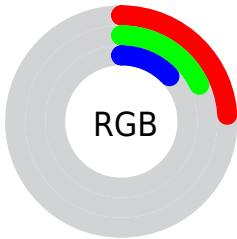
Format	Color
R _Y B	59, 61, 32
Decimal	4009760
CIE Lab	20.55, 3.92, 12.06
CIE LCh	21, 12.680, 72.014
Yxy	3.1294, 0.3937, 0.3848
Android (android.graphics.Color)	4282199840 (0xFF3D2F20)
YUV	49.4760, -8.6157, 10.1065
Hunter-Lab	17.6902, 1.3485, 6.3443

Details

The Hex color **3D2F20** is a dark color, and the websafe version is hex **333333**. A complement of this color would be **202E3D**, and the grayscale version is **323232**.

A 20% lighter version of the original color is **6D5D4C**, and **0D0000** is the 20% darker color. If you saturate the color by 10%, you get **3D2C1A**, and if you desaturate by 10%, it is **3D3226**.

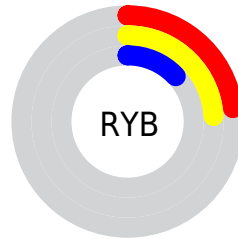
Distribution



Red (24%)

Green (18%)

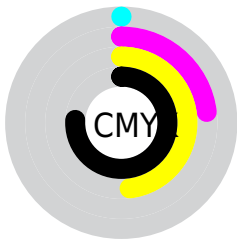
Blue (13%)



Red (23%)

Yellow (24%)

Blue (13%)

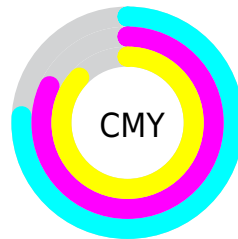


Cyan (0%)

Magenta (23%)

Yellow (48%)

Black (76%)



Cyan (76%)

Magenta (82%)

Yellow (87%)

Brightness & Saturation Gradients

These gradients show how the Hex color 3D2F20 changes by changing the brightness by 10 percent. The first figure shows a shift by +10% for each color and the second figure -10%.

Similar to the brightness gradients but the following saturation gradients show a change of the Hex color 3D2F20 by changing the saturation by 10% instead.



3D2F20



3D2F20

FFFFFF



271A09



6D5D4C



0D0000



877564



000000



A18F7D



BDA997



D9C5B2



F5E1CD



FFFDE9



3D2F20



3D2F20

■ 3D2C1A

■ 3D3226

■ 3D2914

■ 3D352C

■ 3D260E

■ 3D3832

■ 3D2308

■ 3D3B38

■ 3D2002

■ 3D3E3F

■ 3D2000

■ 3D4145

■ 3D444B

■ 3D4751

■ 3D4A57

Harmonies

Analogous

The Analogous color harmony consists of three colors that are next to each other on the color wheel.



432C25



3D2F20



34321F

Triad

The Triadic color harmony groups three colors that are evenly spaced from another and form a triangle on the color wheel.



3D2F20



163735



382E3F

Complementary

The Complementary color scheme is a pair of colors which are on the opposite of each other on the color wheel.



3D2F20



202E3D

Split Complementary

Split-complementary colors differ from the complementary color scheme. The scheme consists of three colors, the original color and two neighbors of the complement color.



2B3144



3D2F20



14363E

Square

The Square scheme is like the rectangle color scheme, but the four colors are evenly spaced on the color wheel.



3D2F20



1F362B



1D3443



402B37

Rectangle

The Rectangle color scheme consists of four colors that form a rectangle on the color wheel.



3D2F20



2D3422



1D3443



342F41

Sweetspot

The Sweet Spot groups the original color and five complimentary colors.



3D2F20



4F4A44



3D202E



292522



A8A8A8



292929

Same Dimension

The Same Dimension uses a secret algorithm to generate beautiful new colors.



3D2F20



4F3922



3D3D20



1F1D1C



5E3100



DE7300

Inverse Universe

The Inverse Universe completely reimagines the original color for something new.



202E3D



22384F



20203D



1C1D1F



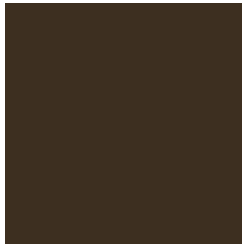
002E5E



006BDE

Previews

White Background



This preview shows how the Hex color 3D2F20 looks on a white background.

Color Contrast Check

Large Text (above 18pt) WCAG AA ✓ Pass

Any Text WCAG AA ✓ Pass

Large Text (above 18pt) WCAG AAA ✓ Pass

Any Text WCAG AAA ✓ Pass

Black Background



Color Contrast Check

Large Text (above 18pt) WCAG AA × Fail

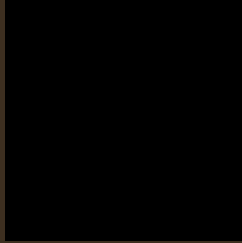
Any Text WCAG AA × Fail

Large Text (above 18pt) WCAG AAA × Fail

Any Text WCAG AAA × Fail

If you want to check with other color combinations, try the [Color Contrast Checker](#).

Hex 3D2F20 Background



This preview shows how black text looks on a background with the Hex color 3D2F20.

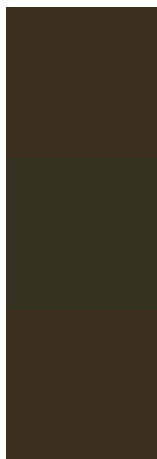


This preview shows how white text looks on a background with the Hex color 3D2F20.

Color Blindness Simulation

Color vision deficiency is a very complex topic, and I could not describe the different causes any better than Wikipedia does, so if you want to learn more, you should check out their [article about color blindness](#).

Dichromacy



Original Color

3D2F20

Protanopia

363221

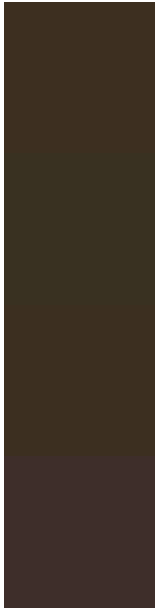
Deuteranopia

3C2F20



Tritanopia
3E2D30

Trichromacy



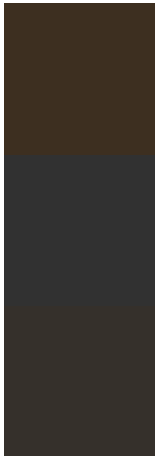
Original Color
3D2F20

Protanomaly
393121

Deuteranomaly
3C2F20

Tritanomaly
3E2E2A

Monochromacy



Original Color
3D2F20

Achromatopsia
313131

Achromatomaly
35302B

CSS Examples

Text

The CSS property to change the color of the text to Hex 3D2F20 is called "color". The color property can be set on classes, ids or directly on the HTML element.

This example shows how text in the color #3D2F20 looks like.

```
.text, #text, p{  
    color:#3D2F20  
}
```

If you want to add a text shadow in that color use the text-shadow property, you can generate a text shadow directly with our [CSS Text Shadow Generator](#).

Here you see how black text with a 4 pixel #3D2F20 colored shadow looks like.

```
.shadow{ text-shadow: 4px 4px 2px #3D2F20
}
```

Border

The CSS property to change the border of an element to Hex 3D2F20 is called "border". The border property can be set on classes, ids or directly on the HTML element.

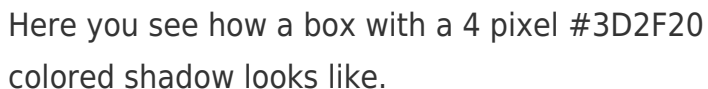
This example shows the color as border, it can be applied via the CSS property "border" or "border-color".

```
.border, #border, table{ border:4px solid
#3D2F20 }
```

If only the border color should be changed use the property `border-color`.

```
.border{ border-color:#3D2F20 }
```

If you want to add a box shadow in that color use:



Here you see how a box with a 4 pixel #3D2F20 colored shadow looks like.

```
.boxshadow{ -moz-box-shadow:4px 4px 4px  
4px #3D2F20; -webkit-box-shadow:4px 4px  
4px 4px #3D2F20; box-shadow:4px 4px 4px  
4px #3D2F20 }
```

Background

The CSS property to change the background color of an element to Hex 3D2F20 is called "background". The background property can be set on classes, ids or directly on the HTML element.

```
.background, #background, body{  
background:#3D2F20 }
```

If only the background color should be changed can be used:

```
.background{ background-color:#3D2F20 }
```

This example shows the color as background, it is applied via the CSS property "background".

To optimize and compress your CSS code, you can use our [online CSS compressor and optimizer](#) based on csstidy. If you want to create a linear or radial gradient as background or border, check our [CSS Gradient Generator](#).

Hey! You found this booklet interesting? Support Converting Colors with the new Membership Option!

The pro membership hides all ads, plus gives you double the colors in the color bucket, and more awesome pro features!

[Learn more, Memberships starting at \\$2.50/m!](#)

**Follow me
on Twitter!**

@ConvertingColor