

# Converting Colors

Hex(3E1B0B)

Have a look what the booklet for  
Hex(3E1B0B) contains.

<b>Hex(3E1B0B)</b> .....	3
<i><b>Conversions</b></i> .....	4
<i><b>Details</b></i> .....	6
<i><b>Harmonies</b></i> .....	11
<i><b>Previews</b></i> .....	23
<i><b>Color Blindness Simulation</b></i> .....	26
<i><b>CSS Examples</b></i> .....	29

# Color

**Hex(3E1B0B)**

# Conversions

## Conversions Part 1

Format	Color
Hex	3E1B0B
RGB	62, 27, 11
RGB Percent	24%, 11%, 4%
CMY	0.7569, 0.8941, 0.9569
CMYK	0.00, 0.56, 0.82, 0.76
HSL	19°, 70%, 14%
HSV	19°, 82%, 24%
XYZ	2.4389, 1.8322, 0.5417
YIQ	35.6410, 25.9960, 2.4440

# Conversions

## Conversions Part 2

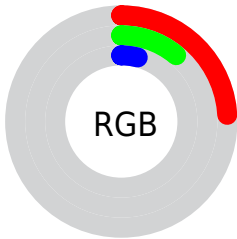
<b>Format</b>	<b>Color</b>
<b>RYB</b>	62, 34, 11
Decimal	4070155
CIELab	14.58, 15.66, 17.39
CIElCh	15, 23.405, 47.990
Yxy	1.8322, 0.5068, 0.3807
Android (android.graphics.Color)	4282260235 (0xFF3E1B0B)
YUV	35.6410, -12.1480, 23.1168
Hunter-Lab	13.5357, 8.4756, 7.1022

# Details

The Hex color **3E1B0B** is a dark color, and the websafe version is hex **330000**. A complement of this color would be **0B2E3E**, and the grayscale version is **242424**.

A 20% lighter version of the original color is **714736**, and **000000** is the 20% darker color. If you saturate the color by 10%, you get **3E1705**, and if you desaturate by 10%, it is **3E1F11**.

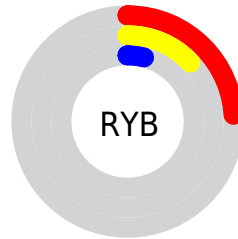
# Distribution



Red (24%)

Green (11%)

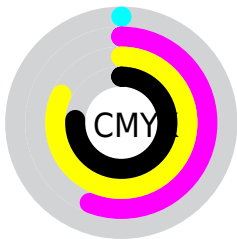
Blue (4%)



Red (24%)

Yellow (13%)

Blue (4%)

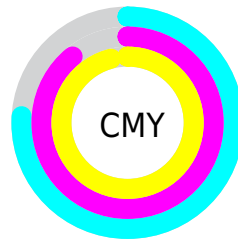


Cyan (0%)

Magenta (56%)

Yellow (82%)

Black (76%)



Cyan (76%)

Magenta (89%)

Yellow (96%)

# Brightness & Saturation Gradients

These gradients show how the Hex color 3E1B0B changes by changing the brightness by 10 percent. The first figure shows a shift by +10% for each color and the second figure -10%.

Similar to the brightness gradients but the following saturation gradients show a change of the Hex color 3E1B0B by changing the saturation by 10% instead.



 3E1B0B

 3E1B0B

 FFFFEB

 270400

 714736

 000000

 8B5F4D

 A67865

 C2927E

 DFAC98

 FCC8B3

 FFE4CF

 3E1B0B

 3E1B0B

■ 3E1705

■ 3E1F11

■ 3E1300

■ 3E2417

■ 3E281E

■ 3E2C24

■ 3E302A

■ 3E3530

■ 3E3936

■ 3E3D3D

■ 3E4143

# Harmonies

## Analogous

The Analogous color harmony consists of three colors that are next to each other on the color wheel.



43161C



3E1B0B



342200

# Triad

The Triadic color harmony groups three colors that are evenly spaced from another and form a triangle on the color wheel.



3E1B0B



002C1D



192344

# Complementary

The Complementary color scheme is a pair of colors which are on the opposite of each other on the color wheel.



3E1B0B



0B2E3E

# Split Complementary

Split-complementary colors differ from the complementary color scheme. The scheme consists of three colors, the original color and two neighbors of the complement color.



002945



3E1B0B



002D2E

# Square

The Square scheme is like the rectangle color scheme, but the four colors are evenly spaced on the color wheel.



3E1B0B



112A0D



002C3D



321C3B

# Rectangle

The Rectangle color scheme consists of four colors that form a rectangle on the color wheel.



3E1B0B



2A2500



002C3D



092545



# Sweetspot

The Sweet Spot groups the original color and five complimentary colors.



3E1B0B



52443D



3E0B2F



29201D



A8A8A8



292929



# Same Dimension

The Same Dimension uses a secret algorithm to generate beautiful new colors.



3E1B0B



521A01



3E340B



1F1D1C



5E1E00



DE4600



# Inverse Universe

The Inverse Universe completely reimagines the original color for something new.



0B2E3E



013852



0B153E



1C1E1F



00415E

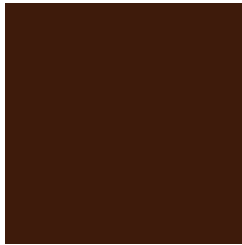


0098DE



# Previews

## White Background



This preview shows how the Hex color 3E1B0B looks on a white background.

## Color Contrast Check

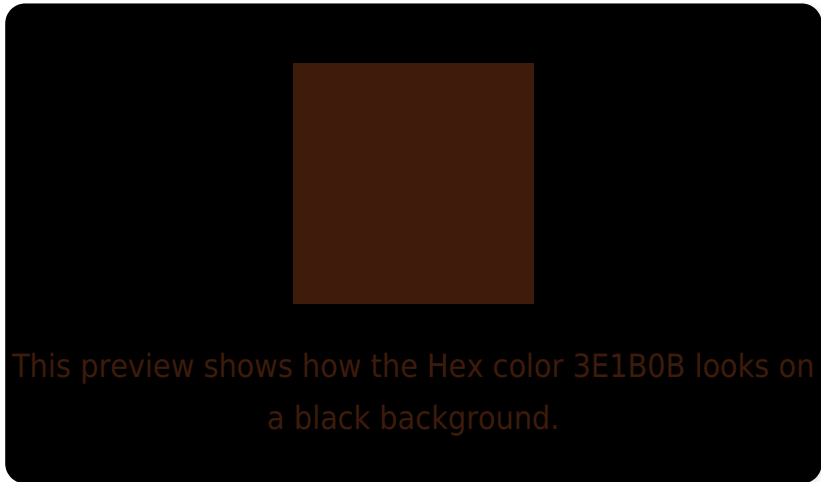
Large Text (above 18pt) WCAG AA ✓ Pass

Any Text WCAG AA ✓ Pass

Large Text (above 18pt) WCAG AAA ✓ Pass

Any Text WCAG AAA ✓ Pass

# Black Background



## Color Contrast Check

Large Text (above 18pt) WCAG AA × Fail

Any Text WCAG AA × Fail

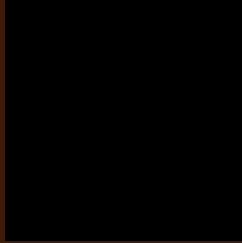
Large Text (above 18pt) WCAG AAA × Fail

Any Text WCAG AAA × Fail

If you want to check with other color combinations, try the [Color Contrast Checker](#).



## Hex 3E1B0B Background



This preview shows how black text looks on a background with the Hex color 3E1B0B.

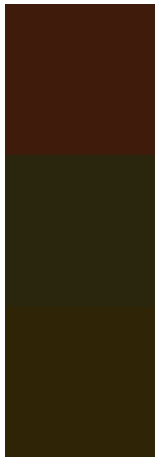


This preview shows how white text looks on a background with the Hex color 3E1B0B.

# Color Blindness Simulation

Color vision deficiency is a very complex topic, and I could not describe the different causes any better than Wikipedia does, so if you want to learn more, you should check out their [article about color blindness](#).

## Dichromacy



**Original Color**  
3E1B0B

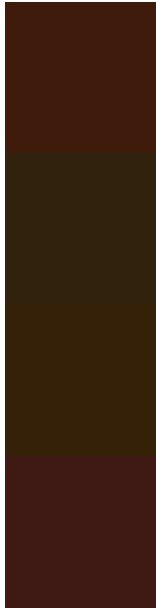
**Protanopia**  
2A260E

**Deuteranopia**  
302407



**Tritanopia**  
3F191B

# Trichromacy



**Original Color**  
3E1B0B

**Protanomaly**  
31220D

**Deuteranomaly**  
352108

**Tritanomaly**  
3F1A15

# Monochromacy



**Original Color**  
3E1B0B

**Achromatopsia**  
242424

**Achromatomaly**  
2D211B

# CSS Examples

## Text

The CSS property to change the color of the text to Hex 3E1B0B is called "color". The color property can be set on classes, ids or directly on the HTML element.

This example shows how text in the color #3E1B0B looks like.

```
.text, #text, p{  
    color:#3E1B0B  
}
```

If you want to add a text shadow in that color use the text-shadow property, you can generate a text shadow directly with our [CSS Text Shadow Generator](#).

Here you see how black text with a 4 pixel #3E1B0B colored shadow looks like.

```
.shadow{ text-shadow: 4px 4px 2px #3E1B0B
}
```

## Border

The CSS property to change the border of an element to Hex 3E1B0B is called "border". The border property can be set on classes, ids or directly on the HTML element.

This example shows the color as border, it can be applied via the CSS property "border" or "border-color".

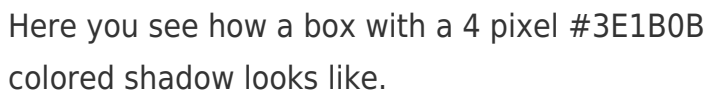
```
.border, #border, table{ border:4px solid
#3E1B0B }
```

If only the border color should be changed use the property `border-color`.

```
.border{ border-color:#3E1B0B }
```

If you want to add a box shadow in that color use:

Here you see how a box with a 4 pixel #3E1B0B colored shadow looks like.



```
.boxshadow{ -moz-box-shadow:4px 4px 4px  
4px #3E1B0B; -webkit-box-shadow:4px 4px  
4px 4px #3E1B0B; box-shadow:4px 4px 4px  
4px #3E1B0B }
```

# Background

The CSS property to change the background color of an element to Hex 3E1B0B is called "background". The background property can be set on classes, ids or directly on the HTML element.

```
.background, #background, body{  
background:#3E1B0B }
```

If only the background color should be changed can be used:

```
.background{ background-color:#3E1B0B }
```

This example shows the color as background, it is applied via the CSS property "background".

To optimize and compress your CSS code, you can use our [online CSS compressor and optimizer](#) based on csstidy. If you want to create a linear or radial gradient as background or border, check our [CSS Gradient Generator](#).



Hey! You found this booklet  
interesting? Support Converting  
Colors with the new Membership  
Option!

The pro membership hides all ads, plus gives you  
double the colors in the color bucket, and more  
awesome pro features!

**[Learn more, Memberships starting at \\$2.50/m!](#)**

**Follow me  
on Twitter!**

@ConvertingColor