

Converting Colors

Hex(3E2321)

Have a look what the booklet for
Hex(3E2321) contains.

Hex(3E2321)	3
<i>Conversions</i>	4
<i>Details</i>	6
<i>Harmonies</i>	11
<i>Previews</i>	23
<i>Color Blindness Simulation</i>	26
<i>CSS Examples</i>	29

Color

Hex(3E2321)

Conversions

Conversions Part 1

Format	Color
Hex	3E2321
RGB	62, 35, 33
RGB Percent	24%, 14%, 13%
CMY	0.7569, 0.8627, 0.8706
CMYK	0.00, 0.44, 0.47, 0.76
HSL	4°, 31%, 19%
HSV	4°, 47%, 24%
XYZ	2.8622, 2.3360, 1.7389
YIQ	42.8450, 16.7340, 5.1020

Conversions

Conversions Part 2

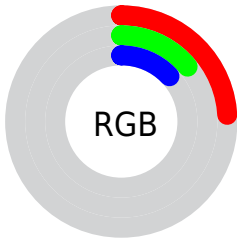
Format	Color
RYB	62, 35, 33
Decimal	4072225
CIELab	17.16, 12.63, 6.81
CIElCh	17, 14.343, 28.332
Yxy	2.3360, 0.4126, 0.3367
Android (android.graphics.Color)	4282262305 (0xFF3E2321)
YUV	42.8450, -4.8536, 16.7989
Hunter-Lab	15.2840, 6.6798, 3.9533

Details

The Hex color **3E2321** is a dark color, and the websafe version is hex **333333**. A complement of this color would be **213C3E**, and the grayscale version is **2B2B2B**.

A 20% lighter version of the original color is **6F504D**, and **010000** is the 20% darker color. If you saturate the color by 10%, you get **3E1D1B**, and if you desaturate by 10%, it is **3E2927**.

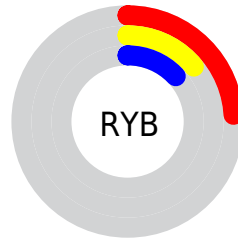
Distribution



Red (24%)

Green (14%)

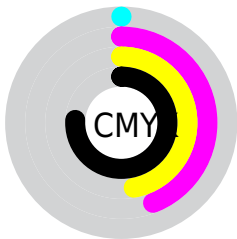
Blue (13%)



Red (24%)

Yellow (14%)

Blue (13%)

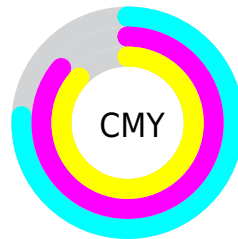


Cyan (0%)

Magenta (44%)

Yellow (47%)

Black (76%)



Cyan (76%)

Magenta (86%)

Yellow (87%)

Brightness & Saturation Gradients

These gradients show how the Hex color 3E2321 changes by changing the brightness by 10 percent. The first figure shows a shift by +10% for each color and the second figure -10%.

Similar to the brightness gradients but the following saturation gradients show a change of the Hex color 3E2321 by changing the saturation by 10% instead.



3E2321



3E2321

FFFFFF



280E0A



6F504D



010000



896865



000000



A3817E



BF9B98



DBB6B2



F8D2CE



FFEEEE



3E2321



3E2321

■ 3E1D1B

■ 3E2927

■ 3E1715

■ 3E2F2D

■ 3E120E

■ 3E3434

■ 3E0C08

■ 3E3A3A

■ 3E0602

■ 3E4040

■ 3E0400

■ 3E4646

■ 3E4B4C

■ 3E5153

■ 3E5759

Harmonies

Analogous

The Analogous color harmony consists of three colors that are next to each other on the color wheel.



3D222B



3E2321



3A2619

Triad

The Triadic color harmony groups three colors that are evenly spaced from another and form a triangle on the color wheel.



3E2321



1B2F1F



1A2B3F

Complementary

The Complementary color scheme is a pair of colors which are on the opposite of each other on the color wheel.



3E2321



213C3E

Split Complementary

Split-complementary colors differ from the complementary color scheme. The scheme consists of three colors, the original color and two neighbors of the complement color.



092E3B



3E2321



0D3029

Square

The Square scheme is like the rectangle color scheme, but the four colors are evenly spaced on the color wheel.



3E2321



272D18



033034



2B283C

Rectangle

The Rectangle color scheme consists of four colors that form a rectangle on the color wheel.



3E2321



352816



033034



142C3E

Sweetspot

The Sweet Spot groups the original color and five complimentary colors.



3E2321



524746



3E213C



292222



A8A8A8



292929

Same Dimension

The Same Dimension uses a secret algorithm to generate beautiful new colors.



3E2321



522724



3E3121



1F1C1C



5E0700



DE0F00

Inverse Universe

The Inverse Universe completely reimagines the original color for something new.



213C3E



244E52



212E3E



1C1E1F



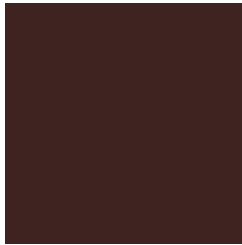
00585E



00CFDE

Previews

White Background



This preview shows how the Hex color 3E2321 looks on a white background.

Color Contrast Check

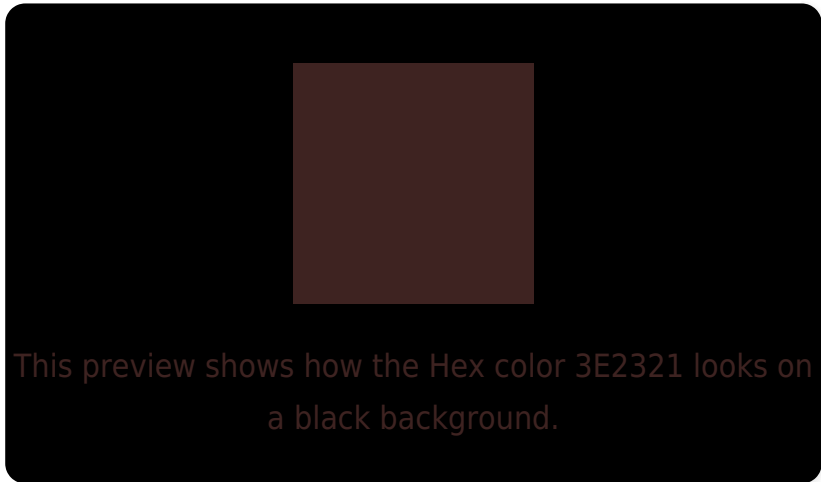
Large Text (above 18pt) WCAG AA ✓ Pass

Any Text WCAG AA ✓ Pass

Large Text (above 18pt) WCAG AAA ✓ Pass

Any Text WCAG AAA ✓ Pass

Black Background



Color Contrast Check

Large Text (above 18pt) WCAG AA × Fail

Any Text WCAG AA × Fail

Large Text (above 18pt) WCAG AAA × Fail

Any Text WCAG AAA × Fail

If you want to check with other color combinations, try the [Color Contrast Checker](#).

Hex 3E2321 Background



This preview shows how black text looks on a background with the Hex color 3E2321.

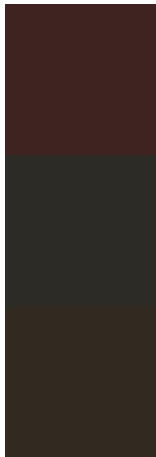


This preview shows how white text looks on a background with the Hex color 3E2321.

Color Blindness Simulation

Color vision deficiency is a very complex topic, and I could not describe the different causes any better than Wikipedia does, so if you want to learn more, you should check out their [article about color blindness](#).

Dichromacy



Original Color
3E2321

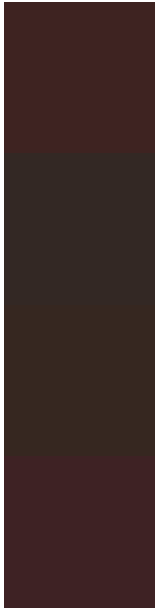
Protanopia
2D2B25

Deuteranopia
322920



Tritanopia
3E2225

Trichromacy



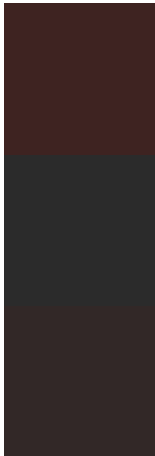
Original Color
3E2321

Protanomaly
332824

Deuteranomaly
362720

Tritanomaly
3E2224

Monochromacy



Original Color
3E2321

Achromatopsia
2B2B2B

Achromatomaly
322827

CSS Examples

Text

The CSS property to change the color of the text to Hex 3E2321 is called "color". The color property can be set on classes, ids or directly on the HTML element.

This example shows how text in the color #3E2321 looks like.

```
.text, #text, p{  
    color:#3E2321  
}
```

If you want to add a text shadow in that color use the text-shadow property, you can generate a text shadow directly with our [CSS Text Shadow Generator](#).

Here you see how black text with a 4 pixel #3E2321 colored shadow looks like.

```
.shadow{ text-shadow: 4px 4px 2px #3E2321
}
```

Border

The CSS property to change the border of an element to Hex 3E2321 is called "border". The border property can be set on classes, ids or directly on the HTML element.

This example shows the color as border, it can be applied via the CSS property "border" or "border-color".

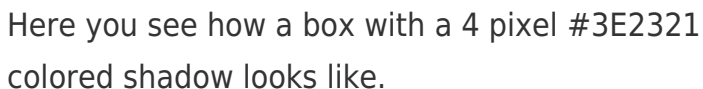
```
.border, #border, table{ border:4px solid
#3E2321 }
```

If only the border color should be changed use the property `border-color`.

```
.border{ border-color:#3E2321 }
```

If you want to add a box shadow in that color use:

Here you see how a box with a 4 pixel #3E2321 colored shadow looks like.



```
.boxshadow{ -moz-box-shadow:4px 4px 4px  
4px #3E2321; -webkit-box-shadow:4px 4px  
4px 4px #3E2321; box-shadow:4px 4px 4px  
4px #3E2321 }
```

Background

The CSS property to change the background color of an element to Hex 3E2321 is called "background". The background property can be set on classes, ids or directly on the HTML element.

```
.background, #background, body{  
background:#3E2321 }
```

If only the background color should be changed can be used:

```
.background{ background-color:#3E2321 }
```

This example shows the color as background, it is applied via the CSS property "background".

To optimize and compress your CSS code, you can use our [online CSS compressor and optimizer](#) based on csstidy. If you want to create a linear or radial gradient as background or border, check our [CSS Gradient Generator](#).

Hey! You found this booklet interesting? Support Converting Colors with the new Membership Option!

The pro membership hides all ads, plus gives you double the colors in the color bucket, and more awesome pro features!

[Learn more, Memberships starting at \\$2.50/m!](#)

**Follow me
on Twitter!**

@ConvertingColor