

Converting Colors

Hex(3F121A)

Have a look what the booklet for
Hex(3F121A) contains.

| | |
|--|----|
| Hex(3F121A) | 3 |
| <i>Conversions</i> | 4 |
| <i>Details</i> | 6 |
| <i>Harmonies</i> | 11 |
| <i>Previews</i> | 23 |
| <i>Color Blindness Simulation</i> | 26 |
| <i>CSS Examples</i> | 29 |

Color

Hex(3F121A)

Conversions

Conversions Part 1

| Format | Color |
|---------------|---------------------------|
| Hex | 3F121A |
| RGB | 63, 18, 26 |
| RGB Percent | 25%, 7%, 10% |
| CMY | 0.7529, 0.9294, 0.8980 |
| CMYK | 0.00, 0.71, 0.59, 0.75 |
| HSL | 349°, 56%, 16% |
| HSV | 349°, 71%, 25% |
| XYZ | 2.4527, 1.5640, 1.1499 |
| YIQ | 32.3670, 24.2520, 12.0280 |

Conversions

Conversions Part 2

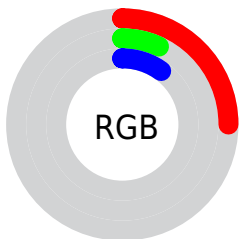
| Format | Color |
|-------------------------------------|---|
| RYB | 63, 18, 26 |
| Decimal | 4133402 |
| CIELab | 13.01, 22.71, 6.14 |
| CIElCh | 13, 23.528, 15.117 |
| Yxy | 1.5640, 0.4747, 0.3027 |
| Android (android.graphics.Color) | 4282323482 (0xFF3F121A) |
| YUV | 32.3670, -3.1389, 26.8651 |
| Hunter-Lab | 12.5058, 13.1225, 3.3025 |

Details

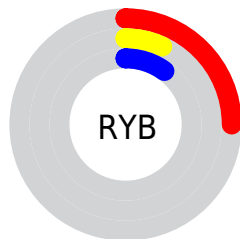
The Hex color **3F121A** is a dark color, and the websafe version is hex **330000**. A complement of this color would be **123F37**, and the grayscale version is **202020**.

A 20% lighter version of the original color is **723F45**, and **000000** is the 20% darker color. If you saturate the color by 10%, you get **3F0C15**, and if you desaturate by 10%, it is **3F181F**.

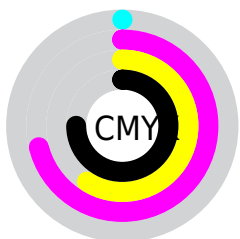
Distribution



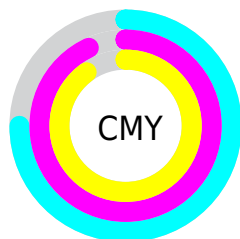
- Red (25%)
- Green (7%)
- Blue (10%)



- Red (25%)
- Yellow (7%)
- Blue (10%)



- Cyan (0%)
- Magenta (71%)
- Yellow (59%)
- Black (75%)



- Cyan (75%)
- Magenta (93%)
- Yellow (90%)

Brightness & Saturation Gradients

These gradients show how the Hex color 3F121A changes by changing the brightness by 10 percent. The first figure shows a shift by +10% for each color and the second figure -10%.

Similar to the brightness gradients but the following saturation gradients show a change of the Hex color 3F121A by changing the saturation by 10% instead.

 3F121A

 3F121A

 FFF8FD

 2A0000

 723F45

 000000

 8C575C

 A77075

 C3898E

 E0A4A9

 FDBFC4

 FFD8E0

 3F121A

 3F121A

■ 3F0C15

■ 3F181F

■ 3F0510

■ 3F1F24

■ 3F000B

■ 3F252A

■ 3F2B2F

■ 3F3234

■ 3F3839

■ 3F3E3E

■ 3F4443

■ 3F4B49

Harmonies

Analogous

The Analogous color harmony consists of three colors that are next to each other on the color wheel.



3B132A



3F121A



3B1707

Triad

The Triadic color harmony groups three colors that are evenly spaced from another and form a triangle on the color wheel.



3F121A



102705



002641

Complementary

The Complementary color scheme is a pair of colors which are on the opposite of each other on the color wheel.



3F121A



123F37

Split Complementary

Split-complementary colors differ from the complementary color scheme. The scheme consists of three colors, the original color and two neighbors of the complement color.



002838



3F121A



002919

Square

The Square scheme is like the rectangle color scheme, but the four colors are evenly spaced on the color wheel.



3F121A



242300



00292A



112141

Rectangle

The Rectangle color scheme consists of four colors that form a rectangle on the color wheel.



3F121A



351B00



00292A



00273F

Sweetspot

The Sweet Spot groups the original color and five complimentary colors.



3F121A



524044



37123F



291F20



A8A8A8



292929

Same Dimension

The Same Dimension uses a secret algorithm to generate beautiful new colors.



3F121A



520B18



3F2012



1F1C1C



5E0011



DE0027

Inverse Universe

The Inverse Universe completely reimagines the original color for something new.



3F121A



520B18



12313F



1F1C1C



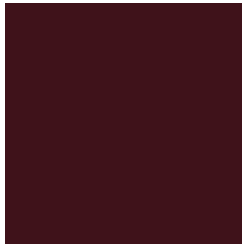
5E0011



DE0027

Previews

White Background



This preview shows how the Hex color 3F121A looks on a white background.

Color Contrast Check

Large Text (above 18pt) WCAG AA ✓ Pass

Any Text WCAG AA ✓ Pass

Large Text (above 18pt) WCAG AAA ✓ Pass

Any Text WCAG AAA ✓ Pass

Black Background



Color Contrast Check

Large Text (above 18pt) WCAG AA × Fail

Any Text WCAG AA × Fail

Large Text (above 18pt) WCAG AAA × Fail

Any Text WCAG AAA × Fail

If you want to check with other color combinations, try the [Color Contrast Checker](#).

Hex 3F121A Background



This preview shows how black text looks on a background with the Hex color 3F121A.

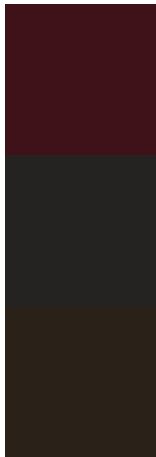


This preview shows how white text looks on a background with the Hex color 3F121A.

Color Blindness Simulation

Color vision deficiency is a very complex topic, and I could not describe the different causes any better than Wikipedia does, so if you want to learn more, you should check out their [article about color blindness](#).


Dichromacy



Original Color
3F121A

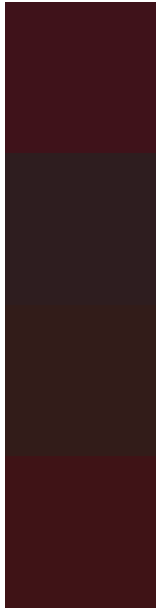
Protanopia
242322

Deuteranopia
2A2218



Tritanopia
3F1314

Trichromacy



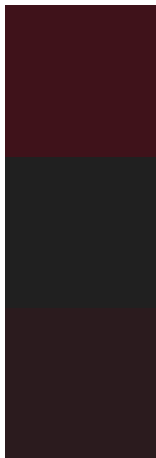
Original Color
3F121A

Protanomaly
2E1D1F

Deuteranomaly
321C19

Tritanomaly
3F1316

Monochromacy



Original Color
3F121A

Achromatopsia
202020

Achromatomaly
2B1B1E

CSS Examples

Text

The CSS property to change the color of the text to Hex 3F121A is called "color". The color property can be set on classes, ids or directly on the HTML element.

This example shows how text in the color #3F121A looks like.

```
.text, #text, p{  
    color:#3F121A  
}
```

If you want to add a text shadow in that color use the text-shadow property, you can generate a text shadow directly with our [CSS Text Shadow Generator](#).

Here you see how black text with a 4 pixel #3F121A colored shadow looks like.

```
.shadow{ text-shadow: 4px 4px 2px #3F121A
}
```

Border

The CSS property to change the border of an element to Hex 3F121A is called "border". The border property can be set on classes, ids or directly on the HTML element.

This example shows the color as border, it can be applied via the CSS property "border" or "border-color".

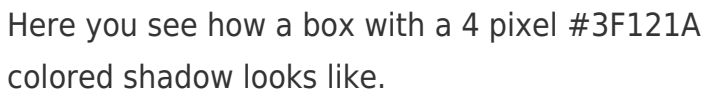
```
.border, #border, table{ border:4px solid
#3F121A }
```

If only the border color should be changed use the property `border-color`.

```
.border{ border-color:#3F121A }
```

If you want to add a box shadow in that color use:

Here you see how a box with a 4 pixel #3F121A colored shadow looks like.

A rectangular box with a dark red border and a dark red shadow. The box is white with a thin dark red border. Below the box, there is a thick dark red horizontal bar. The shadow is a dark red rectangular area that is slightly offset from the bottom and right edges of the box.

```
.boxshadow{ -moz-box-shadow:4px 4px 4px  
4px #3F121A; -webkit-box-shadow:4px 4px  
4px 4px #3F121A; box-shadow:4px 4px 4px  
4px #3F121A }
```

Background

The CSS property to change the background color of an element to Hex 3F121A is called "background". The background property can be set on classes, ids or directly on the HTML element.

```
.background, #background, body{  
background:#3F121A }
```

If only the background color should be changed can be used:

```
.background{ background-color:#3F121A }
```

This example shows the color as background, it is applied via the CSS property "background".

To optimize and compress your CSS code, you can use our [online CSS compressor and optimizer](#) based on csstidy. If you want to create a linear or radial gradient as background or border, check our [CSS Gradient Generator](#).

Hey! You found this booklet interesting? Support Converting Colors with the new Membership Option!

The pro membership hides all ads, plus gives you double the colors in the color bucket, and more awesome pro features!

[Learn more, Memberships starting at \\$2.50/m!](#)

**Follow me
on Twitter!**

@ConvertingColor