

Converting Colors

Hex(3F1F1A)

Have a look what the booklet for
Hex(3F1F1A) contains.

Hex(3F1F1A)	3
<i>Conversions</i>	4
<i>Details</i>	6
<i>Harmonies</i>	11
<i>Previews</i>	23
<i>Color Blindness Simulation</i>	26
<i>CSS Examples</i>	29

Color

Hex(3F1F1A)

Conversions

Conversions Part 1

Format	Color
Hex	3F1F1A
RGB	63, 31, 26
RGB Percent	25%, 12%, 10%
CMY	0.7529, 0.8784, 0.8980
CMYK	0.00, 0.51, 0.59, 0.75
HSL	8°, 42%, 17%
HSV	8°, 59%, 25%
XYZ	2.7263, 2.1113, 1.2411
YIQ	39.9980, 20.6770, 5.2290

Conversions

Conversions Part 2

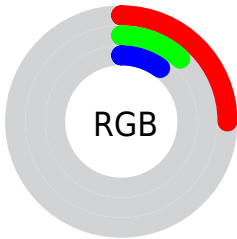
Format	Color
RYB	63, 32, 26
Decimal	4136730
CIELab	16.06, 14.86, 10.27
CIElCh	16, 18.064, 34.637
Yxy	2.1113, 0.4485, 0.3473
Android (android.graphics.Color)	4282326810 (0xFF3F1F1A)
YUV	39.9980, -6.9010, 20.1728
Hunter-Lab	14.5304, 8.0639, 5.1070

Details

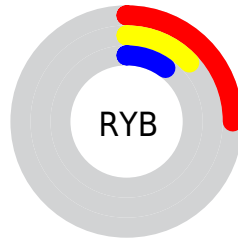
The Hex color **3F1F1A** is a dark color, and the websafe version is hex **330000**. A complement of this color would be **1A3A3F**, and the grayscale version is **282828**.

A 20% lighter version of the original color is **714C45**, and **000000** is the 20% darker color. If you saturate the color by 10%, you get **3F1A14**, and if you desaturate by 10%, it is **3F2420**.

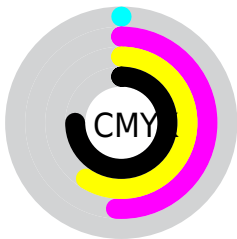
Distribution



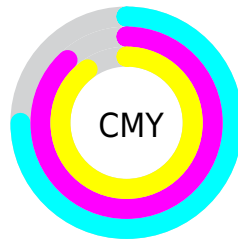
- Red (25%)
- Green (12%)
- Blue (10%)



- Red (25%)
- Yellow (13%)
- Blue (10%)



- Cyan (0%)
- Magenta (51%)
- Yellow (59%)
- Black (75%)



- Cyan (75%)
- Magenta (88%)
- Yellow (90%)

Brightness & Saturation Gradients

These gradients show how the Hex color 3F1F1A changes by changing the brightness by 10 percent. The first figure shows a shift by +10% for each color and the second figure -10%.

Similar to the brightness gradients but the following saturation gradients show a change of the Hex color 3F1F1A by changing the saturation by 10% instead.



3F1F1A



3F1F1A

FFFFFFD



290900



714C45



000000



8B645D



A67D75



C1978F



DEB1A9



FBCDC5



FFE9E0



3F1F1A



3F1F1A

■ 3F1A14

■ 3F2420

■ 3F140D

■ 3F2A27

■ 3F0F07

■ 3F2F2D

■ 3F0901

■ 3F3533

■ 3F0900

■ 3F3A3A

■ 3F4040

■ 3F4546

■ 3F4B4C

■ 3F5053

Harmonies

Analogous

The Analogous color harmony consists of three colors that are next to each other on the color wheel.



401D26



3F1F1A



382311

Triad

The Triadic color harmony groups three colors that are evenly spaced from another and form a triangle on the color wheel.



3F1F1A



0F2E1C



162941

Complementary

The Complementary color scheme is a pair of colors which are on the opposite of each other on the color wheel.



3F1F1A



1A3A3F

Split Complementary

Split-complementary colors differ from the complementary color scheme. The scheme consists of three colors, the original color and two neighbors of the complement color.



002C3F



3F1F1A



002E2A

Square

The Square scheme is like the rectangle color scheme, but the four colors are evenly spaced on the color wheel.



3F1F1A



202B12



002E36



2C243D

Rectangle

The Rectangle color scheme consists of four colors that form a rectangle on the color wheel.



3F1F1A



32260D



002E36



0C2A41

Sweetspot

The Sweet Spot groups the original color and five complimentary colors.



3F1F1A



524543



3F1A3A



292120



A8A8A8



292929

Same Dimension

The Same Dimension uses a secret algorithm to generate beautiful new colors.



3F1F1A



522018



3F311A



1F1C1C



5E0D00



DE1E00

Inverse Universe

The Inverse Universe completely reimagines the original color for something new.



1A3A3F



184A52



1A283F



1C1E1F



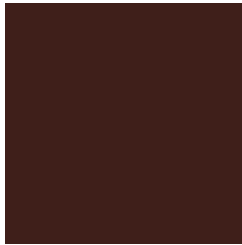
00525E



00CODE

Previews

White Background



This preview shows how the Hex color 3F1F1A looks on a white background.

Color Contrast Check

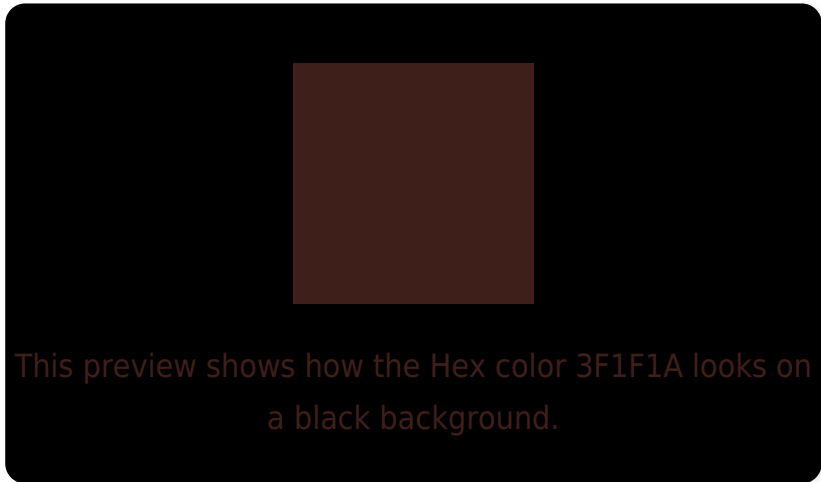
Large Text (above 18pt) WCAG AA ✓ Pass

Any Text WCAG AA ✓ Pass

Large Text (above 18pt) WCAG AAA ✓ Pass

Any Text WCAG AAA ✓ Pass

Black Background



Color Contrast Check

Large Text (above 18pt) WCAG AA × Fail

Any Text WCAG AA × Fail

Large Text (above 18pt) WCAG AAA × Fail

Any Text WCAG AAA × Fail

If you want to check with other color combinations, try the [Color Contrast Checker](#).

Hex 3F1F1A Background



This preview shows how black text looks on a background with the Hex color 3F1F1A.

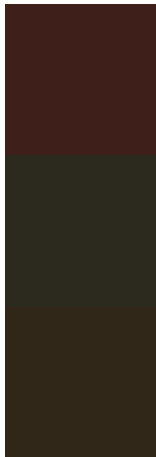


This preview shows how white text looks on a background with the Hex color 3F1F1A.

Color Blindness Simulation

Color vision deficiency is a very complex topic, and I could not describe the different causes any better than Wikipedia does, so if you want to learn more, you should check out their [article about color blindness](#).

Dichromacy



Original Color
3F1F1A

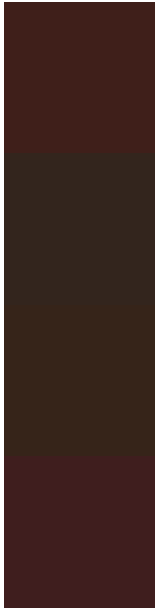
Protanopia
2C291E

Deuteranopia
312719



Tritanopia
3F1E20

Trichromacy



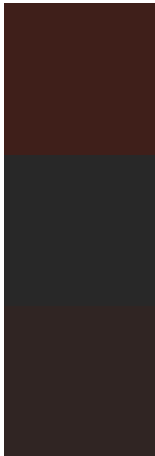
Original Color
3F1F1A

Protanomaly
33251D

Deuteranomaly
362419

Tritanomaly
3F1E1E

Monochromacy



Original Color
3F1F1A

Achromatopsia
282828

Achromatomaly
302523

CSS Examples

Text

The CSS property to change the color of the text to Hex 3F1F1A is called "color". The color property can be set on classes, ids or directly on the HTML element.

This example shows how text in the color #3F1F1A looks like.

```
.text, #text, p{  
    color:#3F1F1A  
}
```

If you want to add a text shadow in that color use the text-shadow property, you can generate a text shadow directly with our [CSS Text Shadow Generator](#).

Here you see how black text with a 4 pixel #3F1F1A colored shadow looks like.

```
.shadow{ text-shadow: 4px 4px 2px #3F1F1A
}
```

Border

The CSS property to change the border of an element to Hex 3F1F1A is called "border". The border property can be set on classes, ids or directly on the HTML element.

This example shows the color as border, it can be applied via the CSS property "border" or "border-color".

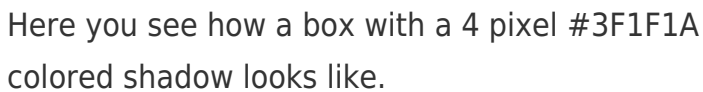
```
.border, #border, table{ border:4px solid
#3F1F1A }
```

If only the border color should be changed use the property `border-color`.

```
.border{ border-color:#3F1F1A }
```

If you want to add a box shadow in that color use:

Here you see how a box with a 4 pixel #3F1F1A colored shadow looks like.



```
.boxshadow{ -moz-box-shadow:4px 4px 4px  
4px #3F1F1A; -webkit-box-shadow:4px 4px  
4px 4px #3F1F1A; box-shadow:4px 4px 4px  
4px #3F1F1A }
```

Background

The CSS property to change the background color of an element to Hex 3F1F1A is called "background". The background property can be set on classes, ids or directly on the HTML element.

```
.background, #background, body{  
background:#3F1F1A }
```

If only the background color should be changed can be used:

```
.background{ background-color:#3F1F1A }
```

This example shows the color as background, it is applied via the CSS property "background".

To optimize and compress your CSS code, you can use our [online CSS compressor and optimizer](#) based on csstidy. If you want to create a linear or radial gradient as background or border, check our [CSS Gradient Generator](#).

Hey! You found this booklet interesting? Support Converting Colors with the new Membership Option!

The pro membership hides all ads, plus gives you double the colors in the color bucket, and more awesome pro features!

[Learn more, Memberships starting at \\$2.50/m!](#)

**Follow me
on Twitter!**

@ConvertingColor