

Converting Colors

Hex(3F2520)

Have a look what the booklet for
Hex(3F2520) contains.

| | |
|--|----|
| Hex(3F2520) | 3 |
| <i>Conversions</i> | 4 |
| <i>Details</i> | 6 |
| <i>Harmonies</i> | 11 |
| <i>Previews</i> | 23 |
| <i>Color Blindness Simulation</i> | 26 |
| <i>CSS Examples</i> | 29 |

Color

Hex(3F2520)

Conversions

Conversions Part 1

| Format | Color |
|-------------|--------------------------|
| Hex | 3F2520 |
| RGB | 63, 37, 32 |
| RGB Percent | 25%, 15%, 13% |
| CMY | 0.7529, 0.8549, 0.8745 |
| CMYK | 0.00, 0.41, 0.49, 0.75 |
| HSL | 10°, 33%, 19% |
| HSV | 10°, 49%, 25% |
| XYZ | 2.9722, 2.4842, 1.6893 |
| YIQ | 44.2040, 17.1010, 3.9570 |

Conversions

Conversions Part 2

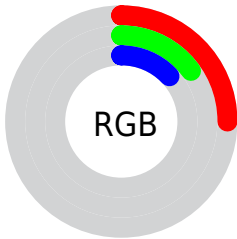
| Format | Color |
|-------------------------------------|------------------------------|
| R_{YB} | 63, 38, 32 |
| Decimal | 4138272 |
| CIE _{Lab} | 17.85, 11.63, 8.47 |
| CIE _{LCh} | 18, 14.392, 36.072 |
| Yxy | 2.4842, 0.4159, 0.3476 |
| Android (android.graphics.Color) | 4282328352 (0xFF3F2520) |
| YUV | 44.2040, -6.0166, 16.4841 |
| Hunter-Lab | 15.7613, 6.0783, 4.6780 |

Details

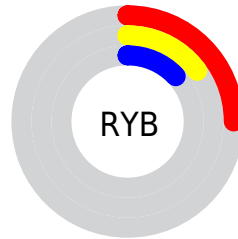
The Hex color **3F2520** is a dark color, and the websafe version is hex **333333**. A complement of this color would be **203A3F**, and the grayscale version is **2C2C2C**.

A 20% lighter version of the original color is **70524C**, and **060000** is the 20% darker color. If you saturate the color by 10%, you get **3F201A**, and if you desaturate by 10%, it is **3F2A26**.

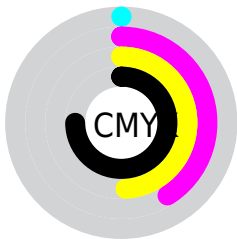
Distribution



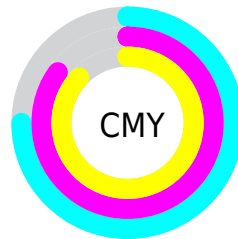
- Red (25%)
- Green (15%)
- Blue (13%)



- Red (25%)
- Yellow (15%)
- Blue (13%)



- Cyan (0%)
- Magenta (41%)
- Yellow (49%)
- Black (75%)



- Cyan (75%)
- Magenta (85%)
- Yellow (87%)

Brightness & Saturation Gradients

These gradients show how the Hex color 3F2520 changes by changing the brightness by 10 percent. The first figure shows a shift by +10% for each color and the second figure -10%.

Similar to the brightness gradients but the following saturation gradients show a change of the Hex color 3F2520 by changing the saturation by 10% instead.

■ 3F2520

■ 3F2520

FFFFFF

■ 291109

■ 70524C

■ 060000

■ 8A6A64

■ 000000

■ A5837D

■ C09E97

■ DCB9B1

■ F9D4CD

■ FFF1E9

■ 3F2520

■ 3F2520

■ 3F201A

■ 3F2A26

■ 3F1A13

■ 3F302D

■ 3F150D

■ 3F3533

■ 3F1007

■ 3F3A39

■ 3F0B00

■ 3F3F40

■ 3F0A00

■ 3F4546

■ 3F4A4C

■ 3F4F52

■ 3F5559

Harmonies

Analogous

The Analogous color harmony consists of three colors that are next to each other on the color wheel.



40242A



3F2520



3A2819

Triad

The Triadic color harmony groups three colors that are evenly spaced from another and form a triangle on the color wheel.



3F2520



193123



202C40

Complementary

The Complementary color scheme is a pair of colors which are on the opposite of each other on the color wheel.



3F2520



203A3F

Split Complementary

Split-complementary colors differ from the complementary color scheme. The scheme consists of three colors, the original color and two neighbors of the complement color.



0F2F3E



3F2520



0B312E

Square

The Square scheme is like the rectangle color scheme, but the four colors are evenly spaced on the color wheel.



3F2520



252F1B



043138



30283C

Rectangle

The Rectangle color scheme consists of four colors that form a rectangle on the color wheel.



3F2520



342B17



043138



1B2D40

Sweetspot

The Sweet Spot groups the original color and five complimentary colors.



3F2520



524745



3F203A



292321



A8A8A8



292929

Same Dimension

The Same Dimension uses a secret algorithm to generate beautiful new colors.



3F2520



522921



3F3420



1F1C1C



5E0F00



DE2400

Inverse Universe

The Inverse Universe completely reimagines the original color for something new.



203A3F



214A52



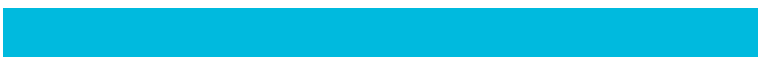
202B3F



1C1E1F



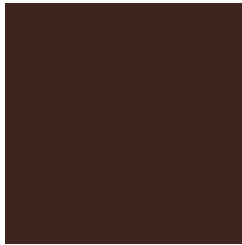
004F5E



00BADE

Previews

White Background



This preview shows how the Hex color 3F2520 looks on a white background.

Color Contrast Check

Large Text (above 18pt) WCAG AA ✓ Pass

Any Text WCAG AA ✓ Pass

Large Text (above 18pt) WCAG AAA ✓ Pass

Any Text WCAG AAA ✓ Pass

Black Background



Color Contrast Check

Large Text (above 18pt) WCAG AA × Fail

Any Text WCAG AA × Fail

Large Text (above 18pt) WCAG AAA × Fail

Any Text WCAG AAA × Fail

If you want to check with other color combinations, try the [Color Contrast Checker](#).

Hex 3F2520 Background



This preview shows how black text looks on a background with the Hex color 3F2520.

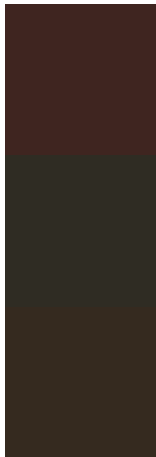


This preview shows how white text looks on a background with the Hex color 3F2520.

Color Blindness Simulation

Color vision deficiency is a very complex topic, and I could not describe the different causes any better than Wikipedia does, so if you want to learn more, you should check out their [article about color blindness](#).

Dichromacy



Original Color
3F2520

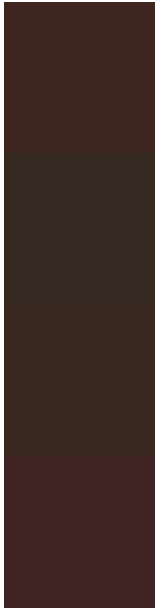
Protanopia
2F2C23

Deuteranopia
352A1F



Tritanopia
402427

Trichromacy



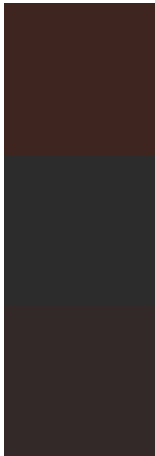
Original Color
3F2520

Protanomaly
352922

Deuteranomaly
39281F

Tritanomaly
402424

Monochromacy



Original Color
3F2520

Achromatopsia
2C2C2C

Achromatomaly
332928

CSS Examples

Text

The CSS property to change the color of the text to Hex 3F2520 is called "color". The color property can be set on classes, ids or directly on the HTML element.

This example shows how text in the color #3F2520 looks like.

```
.text, #text, p{  
    color:#3F2520  
}
```

If you want to add a text shadow in that color use the text-shadow property, you can generate a text shadow directly with our [CSS Text Shadow Generator](#).

Here you see how black text with a 4 pixel #3F2520 colored shadow looks like.

```
.shadow{ text-shadow: 4px 4px 2px #3F2520
}
```

Border

The CSS property to change the border of an element to Hex 3F2520 is called "border". The border property can be set on classes, ids or directly on the HTML element.

This example shows the color as border, it can be applied via the CSS property "border" or "border-color".

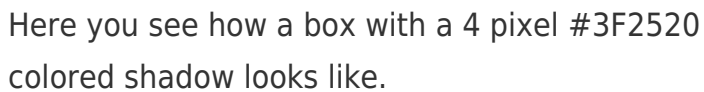
```
.border, #border, table{ border:4px solid
#3F2520 }
```

If only the border color should be changed use the property `border-color`.

```
.border{ border-color:#3F2520 }
```

If you want to add a box shadow in that color use:

Here you see how a box with a 4 pixel #3F2520 colored shadow looks like.



```
.boxshadow{ -moz-box-shadow:4px 4px 4px  
4px #3F2520; -webkit-box-shadow:4px 4px  
4px 4px #3F2520; box-shadow:4px 4px 4px  
4px #3F2520 }
```

Background

The CSS property to change the background color of an element to Hex 3F2520 is called "background". The background property can be set on classes, ids or directly on the HTML element.

```
.background, #background, body{  
background:#3F2520 }
```

If only the background color should be changed can be used:

```
.background{ background-color:#3F2520 }
```

This example shows the color as background, it is applied via the CSS property "background".

To optimize and compress your CSS code, you can use our [online CSS compressor and optimizer](#) based on csstidy. If you want to create a linear or radial gradient as background or border, check our [CSS Gradient Generator](#).

Hey! You found this booklet interesting? Support Converting Colors with the new Membership Option!

The pro membership hides all ads, plus gives you double the colors in the color bucket, and more awesome pro features!

[Learn more, Memberships starting at \\$2.50/m!](#)

**Follow me
on Twitter!**

@ConvertingColor