

Converting Colors

Hex(3F282F)

Have a look what the booklet for
Hex(3F282F) contains.

| | |
|--|----|
| Hex(3F282F) | 3 |
| <i>Conversions</i> | 4 |
| <i>Details</i> | 6 |
| <i>Harmonies</i> | 11 |
| <i>Previews</i> | 23 |
| <i>Color Blindness Simulation</i> | 26 |
| <i>CSS Examples</i> | 29 |

Color

Hex(3F282F)

Conversions

Conversions Part 1

| Format | Color |
|-------------|--------------------------|
| Hex | 3F282F |
| RGB | 63, 40, 47 |
| RGB Percent | 25%, 16%, 18% |
| CMY | 0.7529, 0.8431, 0.8157 |
| CMYK | 0.00, 0.37, 0.25, 0.75 |
| HSL | 342°, 22%, 20% |
| HSV | 342°, 37%, 25% |
| XYZ | 3.3218, 2.7796, 3.0508 |
| YIQ | 47.6750, 11.4610, 7.0530 |

Conversions

Conversions Part 2

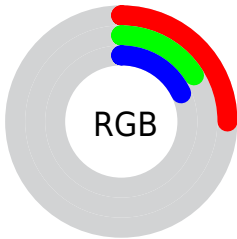
| Format | Color |
|-------------------------------------|------------------------------|
| R_{YB} | 63, 40, 47 |
| Decimal | 4139055 |
| CIE _{Lab} | 19.14, 12.01, -0.16 |
| CIE _{LCh} | 19, 12.015, 359.230 |
| Yxy | 2.7796, 0.3630, 0.3037 |
| Android (android.graphics.Color) | 4282329135 (0xFF3F282F) |
| YUV | 47.6750, -0.3328, 13.4400 |
| Hunter-Lab | 16.6721, 6.3886, 0.8212 |

Details

The Hex color **3F282F** is a dark color, and the websafe version is hex **333333**. A complement of this color would be **283F38**, and the grayscale version is **303030**.

A 20% lighter version of the original color is **6F555D**, and **130000** is the 20% darker color. If you saturate the color by 10%, you get **3F222B**, and if you desaturate by 10%, it is **3F2E33**.

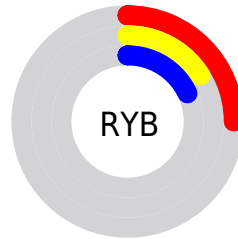
Distribution



Red (25%)

Green (16%)

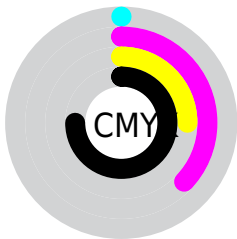
Blue (18%)



Red (25%)

Yellow (16%)

Blue (18%)

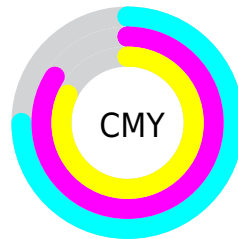


Cyan (0%)

Magenta (37%)

Yellow (25%)

Black (75%)



Cyan (75%)

Magenta (84%)

Yellow (82%)

Brightness & Saturation Gradients

These gradients show how the Hex color 3F282F changes by changing the brightness by 10 percent. The first figure shows a shift by +10% for each color and the second figure -10%.

Similar to the brightness gradients but the following saturation gradients show a change of the Hex color 3F282F by changing the saturation by 10% instead.



3F282F



3F282F

FFFFFF



29131A



6F555D



130000



896E75



000000



A3878F



BFA1A9



DABCC5



F7D8E1



FFF5FD



3F282F



3F282F

■ 3F222B

■ 3F2E33

■ 3F1B26

■ 3F3538

■ 3F1522

■ 3F3B3C

■ 3F0F1D

■ 3F4141

■ 3F0819

■ 3F4845

■ 3F0215

■ 3F4E49

■ 3F0013

■ 3F544E

■ 3F5A52

■ 3F6156

Harmonies

Analogous

The Analogous color harmony consists of three colors that are next to each other on the color wheel.



392937



3F282F



402926

Triad

The Triadic color harmony groups three colors that are evenly spaced from another and form a triangle on the color wheel.



3F282F



2C301F



17323D

Complementary

The Complementary color scheme is a pair of colors which are on the opposite of each other on the color wheel.



3F282F



283F38

Split Complementary

Split-complementary colors differ from the complementary color scheme. The scheme consists of three colors, the original color and two neighbors of the complement color.



133337



3F282F



213225

Square

The Square scheme is like the rectangle color scheme, but the four colors are evenly spaced on the color wheel.



3F282F



352E1D



18332E



232F40

Rectangle

The Rectangle color scheme consists of four colors that form a rectangle on the color wheel.



3F282F



3E2A22



18332E



15323B

Sweetspot

The Sweet Spot groups the original color and five complimentary colors.



3F282F



52494B



38283F



292325



A8A8A8



292929

Same Dimension

The Same Dimension uses a secret algorithm to generate beautiful new colors.



3F282F



522E39



3F2C28



1F1C1C



5E001D



DE0044

Inverse Universe

The Inverse Universe completely reimagines the original color for something new.



3F282F



522E39



283B3F



1F1C1C



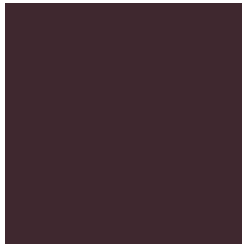
5E001D



DE0044

Previews

White Background



This preview shows how the Hex color 3F282F looks on a white background.

Color Contrast Check

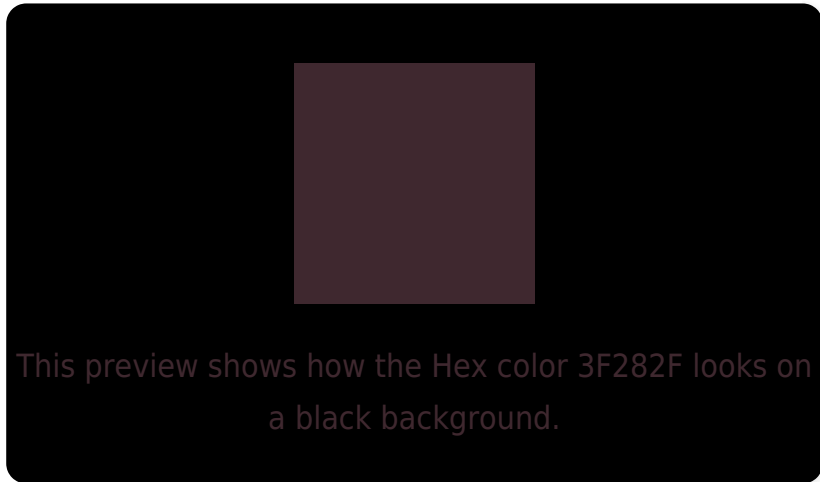
Large Text (above 18pt) WCAG AA ✓ Pass

Any Text WCAG AA ✓ Pass

Large Text (above 18pt) WCAG AAA ✓ Pass

Any Text WCAG AAA ✓ Pass

Black Background



Color Contrast Check

Large Text (above 18pt) WCAG AA × Fail

Any Text WCAG AA × Fail

Large Text (above 18pt) WCAG AAA × Fail

Any Text WCAG AAA × Fail

If you want to check with other color combinations, try the [Color Contrast Checker](#).

Hex 3F282F Background



This preview shows how black text looks on a background with the Hex color 3F282F.



This preview shows how white text looks on a background with the Hex color 3F282F.

Color Blindness Simulation

Color vision deficiency is a very complex topic, and I could not describe the different causes any better than Wikipedia does, so if you want to learn more, you should check out their [article about color blindness](#).

Dichromacy



Original Color
3F282F

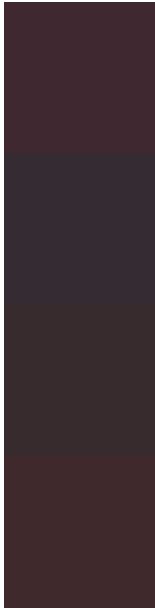
Protanopia
2E2E33

Deuteranopia
342D2E



Tritanopia
3F292C

Trichromacy



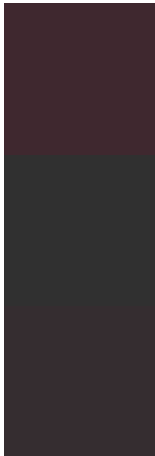
Original Color
3F282F

Protanomaly
342C32

Deuteranomaly
382B2E

Tritanomaly
3F292D

Monochromacy



Original Color
3F282F

Achromatopsia
303030

Achromatomaly
352D30

CSS Examples

Text

The CSS property to change the color of the text to Hex 3F282F is called "color". The color property can be set on classes, ids or directly on the HTML element.

This example shows how text in the color #3F282F looks like.

```
.text, #text, p{  
    color:#3F282F  
}
```

If you want to add a text shadow in that color use the text-shadow property, you can generate a text shadow directly with our [CSS Text Shadow Generator](#).

Here you see how black text with a 4 pixel #3F282F colored shadow looks like.

```
.shadow{ text-shadow: 4px 4px 2px #3F282F
}
```

Border

The CSS property to change the border of an element to Hex 3F282F is called "border". The border property can be set on classes, ids or directly on the HTML element.

This example shows the color as border, it can be applied via the CSS property "border" or "border-color".

```
.border, #border, table{ border:4px solid
#3F282F }
```

If only the border color should be changed use the property `border-color`.

```
.border{ border-color:#3F282F }
```

If you want to add a box shadow in that color use:

Here you see how a box with a 4 pixel #3F282F colored shadow looks like.

```
.boxshadow{ -moz-box-shadow:4px 4px 4px  
4px #3F282F; -webkit-box-shadow:4px 4px  
4px 4px #3F282F; box-shadow:4px 4px 4px  
4px #3F282F }
```

Background

The CSS property to change the background color of an element to Hex 3F282F is called "background". The background property can be set on classes, ids or directly on the HTML element.

```
.background, #background, body{  
background:#3F282F }
```

If only the background color should be changed can be used:

```
.background{ background-color:#3F282F }
```

This example shows the color as background, it is applied via the CSS property "background".

To optimize and compress your CSS code, you can use our [online CSS compressor and optimizer](#) based on csstidy. If you want to create a linear or radial gradient as background or border, check our [CSS Gradient Generator](#).

Hey! You found this booklet interesting? Support Converting Colors with the new Membership Option!

The pro membership hides all ads, plus gives you double the colors in the color bucket, and more awesome pro features!

[Learn more, Memberships starting at \\$2.50/m!](#)

**Follow me
on Twitter!**

@ConvertingColor