

Converting Colors

Hex(3F2B27)

Have a look what the booklet for
Hex(3F2B27) contains.

Hex(3F2B27)	3
<i>Conversions</i>	4
<i>Details</i>	6
<i>Harmonies</i>	11
<i>Previews</i>	23
<i>Color Blindness Simulation</i>	26
<i>CSS Examples</i>	29

Color

Hex(3F2B27)

Conversions

Conversions Part 1

Format	Color
Hex	3F2B27
RGB	63, 43, 39
RGB Percent	25%, 17%, 15%
CMY	0.7529, 0.8314, 0.8471
CMYK	0.00, 0.32, 0.38, 0.75
HSL	10°, 24%, 20%
HSV	10°, 38%, 25%
XYZ	3.2800, 2.9310, 2.3123
YIQ	48.5240, 13.2040, 2.9960

Conversions

Conversions Part 2

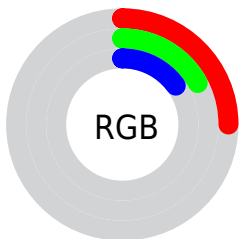
Format	Color
RYB	63, 44, 39
Decimal	4139815
CIELab	19.77, 8.62, 6.28
CIELCh	20, 10.668, 36.060
Yxy	2.9310, 0.3848, 0.3439
Android (android.graphics.Color)	4282329895 (0xFF3F2B27)
YUV	48.5240, -4.6953, 12.6955
Hunter-Lab	17.1202, 4.2378, 3.9762

Details

The Hex color **3F2B27** is a dark color, and the websafe version is hex **333333**. A complement of this color would be **273B3F**, and the grayscale version is **313131**.

A 20% lighter version of the original color is **6F5954**, and **120000** is the 20% darker color. If you saturate the color by 10%, you get **3F2621**, and if you desaturate by 10%, it is **3F302D**.

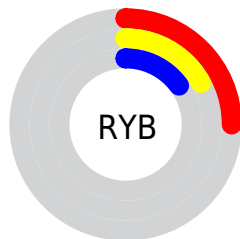
Distribution



Red (25%)

Green (17%)

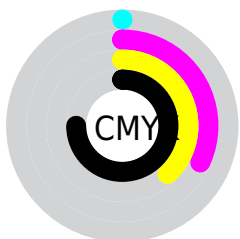
Blue (15%)



Red (25%)

Yellow (17%)

Blue (15%)

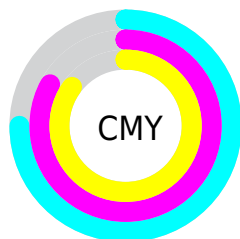


Cyan (0%)

Magenta (32%)

Yellow (38%)

Black (75%)



Cyan (75%)

Magenta (83%)

Yellow (85%)

Brightness & Saturation Gradients

These gradients show how the Hex color 3F2B27 changes by changing the brightness by 10 percent. The first figure shows a shift by +10% for each color and the second figure -10%.

Similar to the brightness gradients but the following saturation gradients show a change of the Hex color 3F2B27 by changing the saturation by 10% instead.



3F2B27



3F2B27

FFFFFF



291613



6F5954



120000



89716C



000000



A48A85



BFA59F



DBC0BA



F7DCD6



FFF8F2



3F2B27



3F2B27

■ 3F2621

■ 3F302D

■ 3F211A

■ 3F3634

■ 3F1B14

■ 3F3B3A

■ 3F160E

■ 3F4040

■ 3F1107

■ 3F4547

■ 3F0B01

■ 3F4B4D

■ 3F0A00

■ 3F5053

■ 3F5559

■ 3F5A60

Harmonies

Analogous

The Analogous color harmony consists of three colors that are next to each other on the color wheel.



3F2A2E



3F2B27



3B2D22

Triad

The Triadic color harmony groups three colors that are evenly spaced from another and form a triangle on the color wheel.



3F2B27



223429



28303F

Complementary

The Complementary color scheme is a pair of colors which are on the opposite of each other on the color wheel.



3F2B27



273B3F

Split Complementary

Split-complementary colors differ from the complementary color scheme. The scheme consists of three colors, the original color and two neighbors of the complement color.



1E323E



3F2B27



1B3431

Square

The Square scheme is like the rectangle color scheme, but the four colors are evenly spaced on the color wheel.



3F2B27



2B3223



193439



332D3C

Rectangle

The Rectangle color scheme consists of four colors that form a rectangle on the color wheel.



3F2B27



362F20



193439



25313F

Sweetspot

The Sweet Spot groups the original color and five complimentary colors.



3F2B27



524A49



3F273B



292423



A8A8A8



292929

Same Dimension

The Same Dimension uses a secret algorithm to generate beautiful new colors.



3F2B27



52322C



3F3727



1F1C1C



5E1000



DE2500

Inverse Universe

The Inverse Universe completely reimagines the original color for something new.



273B3F



2C4B52



272F3F



1C1E1F



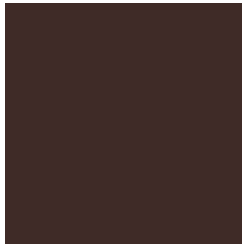
004F5E



00B9DE

Previews

White Background



This preview shows how the Hex color 3F2B27 looks on a white background.

Color Contrast Check

Large Text (above 18pt) WCAG AA ✓ Pass

Any Text WCAG AA ✓ Pass

Large Text (above 18pt) WCAG AAA ✓ Pass

Any Text WCAG AAA ✓ Pass

Black Background



Color Contrast Check

Large Text (above 18pt) WCAG AA × Fail

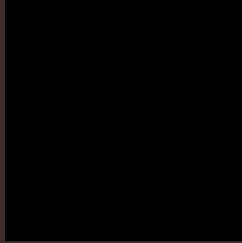
Any Text WCAG AA × Fail

Large Text (above 18pt) WCAG AAA × Fail

Any Text WCAG AAA × Fail

If you want to check with other color combinations, try the [Color Contrast Checker](#).

Hex 3F2B27 Background



This preview shows how black text looks on a background with the Hex color 3F2B27.

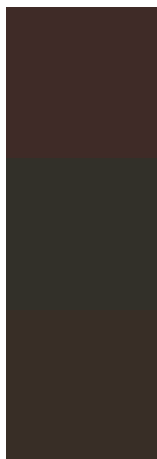


This preview shows how white text looks on a background with the Hex color 3F2B27.

Color Blindness Simulation

Color vision deficiency is a very complex topic, and I could not describe the different causes any better than Wikipedia does, so if you want to learn more, you should check out their [article about color blindness](#).

Dichromacy

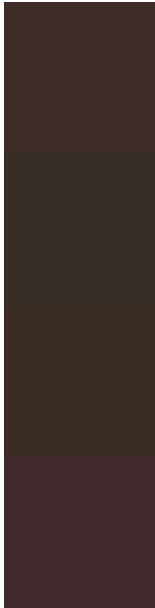


Original Color
3F2B27

Protanopia
323029

Deuteranopia
382E26

Trichromacy



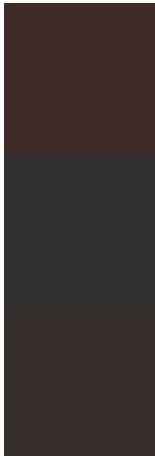
Original Color
3F2B27

Protanomaly
372E28

Deuteranomaly
3B2D26

Tritanomaly
402A2B

Monochromacy



Original Color
3F2B27

Achromatopsia
313131

Achromatomaly
362F2D

CSS Examples

Text

The CSS property to change the color of the text to Hex 3F2B27 is called "color". The color property can be set on classes, ids or directly on the HTML element.

This example shows how text in the color #3F2B27 looks like.

```
.text, #text, p{  
  color:#3F2B27  
}
```

If you want to add a text shadow in that color use the text-shadow property, you can generate a text shadow directly with our [CSS Text Shadow Generator](#).

Here you see how black text with a 4 pixel #3F2B27 colored shadow looks like.

```
.shadow{ text-shadow: 4px 4px 2px #3F2B27
}
```

Border

The CSS property to change the border of an element to Hex 3F2B27 is called "border". The border property can be set on classes, ids or directly on the HTML element.

This example shows the color as border, it can be applied via the CSS property "border" or "border-color".

```
.border, #border, table{ border:4px solid
#3F2B27 }
```

If only the border color should be changed use the property `border-color`.

```
.border{ border-color:#3F2B27 }
```

If you want to add a box shadow in that color use:

Here you see how a box with a 4 pixel #3F2B27 colored shadow looks like.

```
.boxshadow{ -moz-box-shadow:4px 4px 4px  
4px #3F2B27; -webkit-box-shadow:4px 4px  
4px 4px #3F2B27; box-shadow:4px 4px 4px  
4px #3F2B27 }
```

Background

The CSS property to change the background color of an element to Hex 3F2B27 is called "background". The background property can be set on classes, ids or directly on the HTML element.

```
.background, #background, body{  
background:#3F2B27 }
```

If only the background color should be changed can be used:

```
.background{ background-color:#3F2B27 }
```

This example shows the color as background, it is applied via the CSS property "background".

To optimize and compress your CSS code, you can use our [online CSS compressor and optimizer](#) based on csstidy. If you want to create a linear or radial gradient as background or border, check our [CSS Gradient Generator](#).

Hey! You found this booklet interesting? Support Converting Colors with the new Membership Option!

The pro membership hides all ads, plus gives you double the colors in the color bucket, and more awesome pro features!

[Learn more, Memberships starting at \\$2.50/m!](#)

**Follow me
on Twitter!**

@ConvertingColor