

Converting Colors

Hex(40170C)

Have a look what the booklet for
Hex(40170C) contains.

Hex(40170C)	3
<i>Conversions</i>	4
<i>Details</i>	6
<i>Harmonies</i>	11
<i>Previews</i>	23
<i>Color Blindness Simulation</i>	26
<i>CSS Examples</i>	29

Color

Hex(40170C)

Conversions

Conversions Part 1

Format	Color
Hex	40170C
RGB	64, 23, 12
RGB Percent	25%, 9%, 5%
CMY	0.7490, 0.9098, 0.9529
CMYK	0.00, 0.64, 0.81, 0.75
HSL	13°, 68%, 15%
HSV	13°, 81%, 25%
XYZ	2.4871, 1.7293, 0.5505
YIQ	34.0050, 27.9670, 5.2710

Conversions

Conversions Part 2

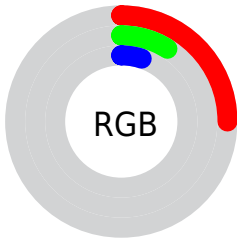
Format	Color
RYB	64, 26, 12
Decimal	4200204
CIELab	14.00, 19.14, 16.26
CIELCh	14, 25.115, 40.343
Yxy	1.7293, 0.5217, 0.3628
Android (android.graphics.Color)	4282390284 (0xFF40170C)
YUV	34.0050, -10.8485, 26.3056
Hunter-Lab	13.1504, 10.7462, 6.7231

Details

The Hex color **40170C** is a dark color, and the websafe version is hex **330000**. A complement of this color would be **0C3540**, and the grayscale version is **222222**.

A 20% lighter version of the original color is **734337**, and **000000** is the 20% darker color. If you saturate the color by 10%, you get **401206**, and if you desaturate by 10%, it is **401C12**.

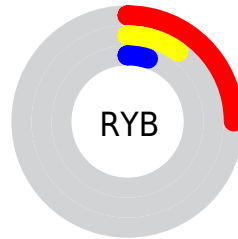
Distribution



Red (25%)

Green (9%)

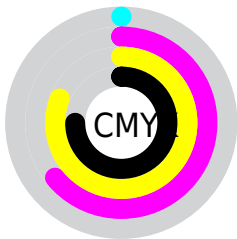
Blue (5%)



Red (25%)

Yellow (10%)

Blue (5%)

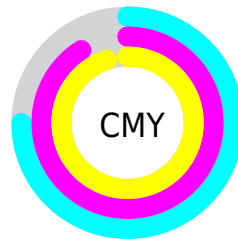


Cyan (0%)

Magenta (64%)

Yellow (81%)

Black (75%)



Cyan (75%)

Magenta (91%)

Yellow (95%)

Brightness & Saturation Gradients

These gradients show how the Hex color 40170C changes by changing the brightness by 10 percent. The first figure shows a shift by +10% for each color and the second figure -10%.

Similar to the brightness gradients but the following saturation gradients show a change of the Hex color 40170C by changing the saturation by 10% instead.

 40170C

 40170C

 FFFDEC

 290000

 734337

 000000

 8E5B4E

 A97466

 C68E7F

 E2A999

 FFC4B4

 FFE0CF

 40170C

 40170C

■ 401206

■ 401C12

■ 400E00

■ 402119

■ 40261F

■ 402B26

■ 40302C

■ 403532

■ 403A39

■ 403F3F

■ 404446

Harmonies

Analogous

The Analogous color harmony consists of three colors that are next to each other on the color wheel.



43121E



40170C



371E00

Triad

The Triadic color harmony groups three colors that are evenly spaced from another and form a triangle on the color wheel.



40170C



002B17



072446

Complementary

The Complementary color scheme is a pair of colors which are on the opposite of each other on the color wheel.



40170C



0C3540

Split Complementary

Split-complementary colors differ from the complementary color scheme. The scheme consists of three colors, the original color and two neighbors of the complement color.



002945



40170C



002C29

Square

The Square scheme is like the rectangle color scheme, but the four colors are evenly spaced on the color wheel.



40170C



152903



002B3A



2C1C3F

Rectangle

The Rectangle color scheme consists of four colors that form a rectangle on the color wheel.



40170C



2D2300



002B3A



002647

Sweetspot

The Sweet Spot groups the original color and five complimentary colors.



40170C



544440



400C36



2B211F



ABABAB



2B2B2B

Same Dimension

The Same Dimension uses a secret algorithm to generate beautiful new colors.



40170C



541302



40300C



211F1E



611400



E02F00

Inverse Universe

The Inverse Universe completely reimagines the original color for something new.



0C3540



024354



0C1C40



1E2021



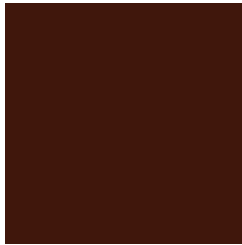
004C61



00B1E0

Previews

White Background



This preview shows how the Hex color 40170C looks on a white background.

Color Contrast Check

Large Text (above 18pt) WCAG AA ✓ Pass

Any Text WCAG AA ✓ Pass

Large Text (above 18pt) WCAG AAA ✓ Pass

Any Text WCAG AAA ✓ Pass

Black Background



Color Contrast Check

Large Text (above 18pt) WCAG AA × Fail

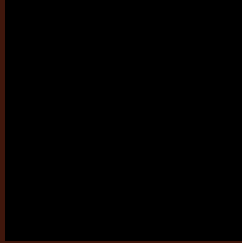
Any Text WCAG AA × Fail

Large Text (above 18pt) WCAG AAA × Fail

Any Text WCAG AAA × Fail

If you want to check with other color combinations, try the [Color Contrast Checker](#).

Hex 40170C Background



This preview shows how black text looks on a background with the Hex color 40170C.

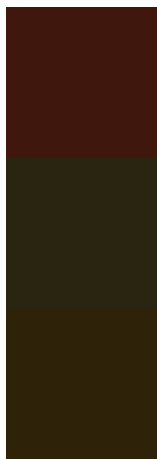


This preview shows how white text looks on a background with the Hex color 40170C.

Color Blindness Simulation

Color vision deficiency is a very complex topic, and I could not describe the different causes any better than Wikipedia does, so if you want to learn more, you should check out their [article about color blindness](#).

Dichromacy



Original Color
40170C

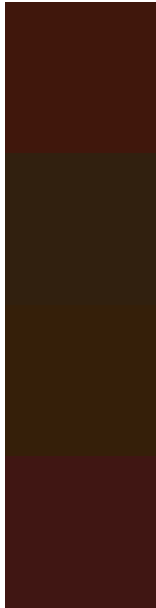
Protanopia
292510

Deuteranopia
2E2308



Tritanopia
401617

Trichromacy



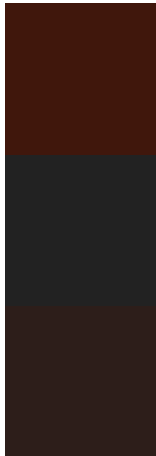
Original Color
40170C

Protanomaly
31200F

Deuteranomaly
351F09

Tritanomaly
401613

Monochromacy



Original Color
40170C

Achromatopsia
222222

Achromatomaly
2D1E1A

CSS Examples

Text

The CSS property to change the color of the text to Hex 40170C is called "color". The color property can be set on classes, ids or directly on the HTML element.

This example shows how text in the color #40170C looks like.

```
.text, #text, p{  
    color:#40170C  
}
```

If you want to add a text shadow in that color use the text-shadow property, you can generate a text shadow directly with our [CSS Text Shadow Generator](#).

Here you see how black text with a 4 pixel #40170C colored shadow looks like.

```
.shadow{ text-shadow: 4px 4px 2px #40170C
}
```

Border

The CSS property to change the border of an element to Hex 40170C is called "border". The border property can be set on classes, ids or directly on the HTML element.

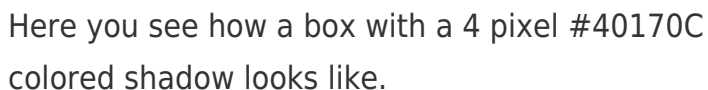
This example shows the color as border, it can be applied via the CSS property "border" or "border-color".

```
.border, #border, table{ border:4px solid
#40170C }
```

If only the border color should be changed use the property `border-color`.

```
.border{ border-color:#40170C }
```

If you want to add a box shadow in that color use:



Here you see how a box with a 4 pixel #40170C colored shadow looks like.

```
.boxshadow{ -moz-box-shadow:4px 4px 4px  
4px #40170C; -webkit-box-shadow:4px 4px  
4px 4px #40170C; box-shadow:4px 4px 4px  
4px #40170C }
```

Background

The CSS property to change the background color of an element to Hex 40170C is called "background". The background property can be set on classes, ids or directly on the HTML element.

```
.background, #background, body{  
background:#40170C }
```

If only the background color should be changed can be used:

```
.background{ background-color:#40170C }
```

This example shows the color as background, it is applied via the CSS property "background".

To optimize and compress your CSS code, you can use our [online CSS compressor and optimizer](#) based on csstidy. If you want to create a linear or radial gradient as background or border, check our [CSS Gradient Generator](#).

Hey! You found this booklet
interesting? Support Converting
Colors with the new Membership
Option!

The pro membership hides all ads, plus gives you
double the colors in the color bucket, and more
awesome pro features!

[Learn more, Memberships starting at \\$2.50/m!](#)

**Follow me
on Twitter!**

@ConvertingColor