

# Converting Colors

Hex(402727)

Have a look what the booklet for  
Hex(402727) contains.

<b>Hex(402727)</b> .....	3
<b><i>Conversions</i></b> .....	4
<b><i>Details</i></b> .....	6
<b><i>Harmonies</i></b> .....	11
<b><i>Previews</i></b> .....	23
<b><i>Color Blindness Simulation</i></b> .....	26
<b><i>CSS Examples</i></b> .....	29

# Color

**Hex(402727)**

# Conversions

## Conversions Part 1

Format	Color
Hex	402727
RGB	64, 39, 39
RGB Percent	25%, 15%, 15%
CMY	0.7490, 0.8471, 0.8471
CMYK	0.00, 0.39, 0.39, 0.75
HSL	0°, 24%, 20%
HSV	0°, 39%, 25%
XYZ	3.2061, 2.6875, 2.2692
YIQ	46.4750, 14.9000, 5.3000

# Conversions

## Conversions Part 2

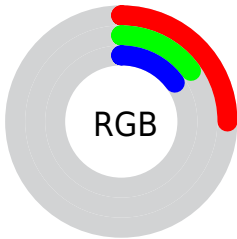
<b>Format</b>	<b>Color</b>
<b>RYB</b>	64, 39, 39
Decimal	4204327
CIELab	18.75, 11.78, 4.87
CIElCh	19, 12.751, 22.447
Yxy	2.6875, 0.3928, 0.3292
Android (android.graphics.Color)	4282394407 (0xFF402727)
YUV	46.4750, -3.6852, 15.3694
Hunter-Lab	16.3936, 6.2202, 3.2686

# Details

The Hex color **402727** is a dark color, and the websafe version is hex **333333**. A complement of this color would be **274040**, and the grayscale version is **2E2E2E**.

A 20% lighter version of the original color is **715454**, and **100000** is the 20% darker color. If you saturate the color by 10%, you get **402121**, and if you desaturate by 10%, it is **402D2D**.

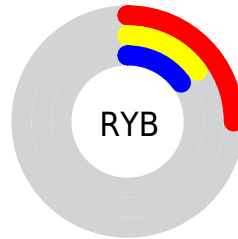
# Distribution



Red (25%)

Green (15%)

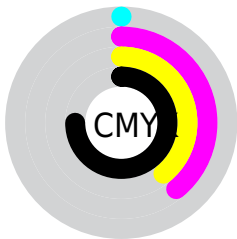
Blue (15%)



Red (25%)

Yellow (15%)

Blue (15%)

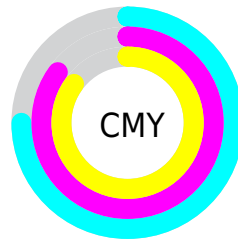


Cyan (0%)

Magenta (39%)

Yellow (39%)

Black (75%)



Cyan (75%)

Magenta (85%)

Yellow (85%)

# Brightness & Saturation Gradients

These gradients show how the Hex color 402727 changes by changing the brightness by 10 percent. The first figure shows a shift by +10% for each color and the second figure -10%.

Similar to the brightness gradients but the following saturation gradients show a change of the Hex color 402727 by changing the saturation by 10% instead.





402727



402727

FFFFFF



291212



715454



100000



8B6D6C



000000



A58685



C1A09F



DDBBBA



F9D7D6



FFF3F2



402727



402727

■ 402121

■ 402D2D

■ 401A1A

■ 403434

■ 401414

■ 403A3A

■ 400D0D

■ 404141

■ 400707

■ 404747

■ 400101

■ 404D4D

■ 400000

■ 405454

■ 405A5A

■ 406161

# Harmonies

## Analogous

The Analogous color harmony consists of three colors that are next to each other on the color wheel.



3E2730



402727



3D291F

# Triad

The Triadic color harmony groups three colors that are evenly spaced from another and form a triangle on the color wheel.



402727



223122



1E2F40

# Complementary

The Complementary color scheme is a pair of colors which are on the opposite of each other on the color wheel.



402727



274040

# Split Complementary

Split-complementary colors differ from the complementary color scheme. The scheme consists of three colors, the original color and two neighbors of the complement color.



12313C



402727



17332B

# Square

The Square scheme is like the rectangle color scheme, but the four colors are evenly spaced on the color wheel.



402727



2D2F1C



103334



2C2C3F

# Rectangle

The Rectangle color scheme consists of four colors that form a rectangle on the color wheel.



402727



392B1C



103334



19303F



# Sweetspot

The Sweet Spot groups the original color and five complimentary colors.



402727



544A4A



402740



2B2525



ABABAB



2B2B2B



# Same Dimension

The Same Dimension uses a secret algorithm to generate beautiful new colors.



402727



542D2D



403427



211E1E



610000



E00000



# Inverse Universe

The Inverse Universe completely reimagines the original color for something new.



274040



2D5454



273440



1E2121



006161

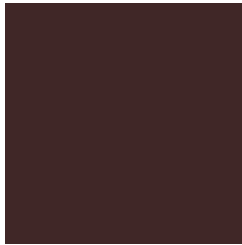


00E0E0



# Previews

## White Background



This preview shows how the Hex color 402727 looks on a white background.

## Color Contrast Check

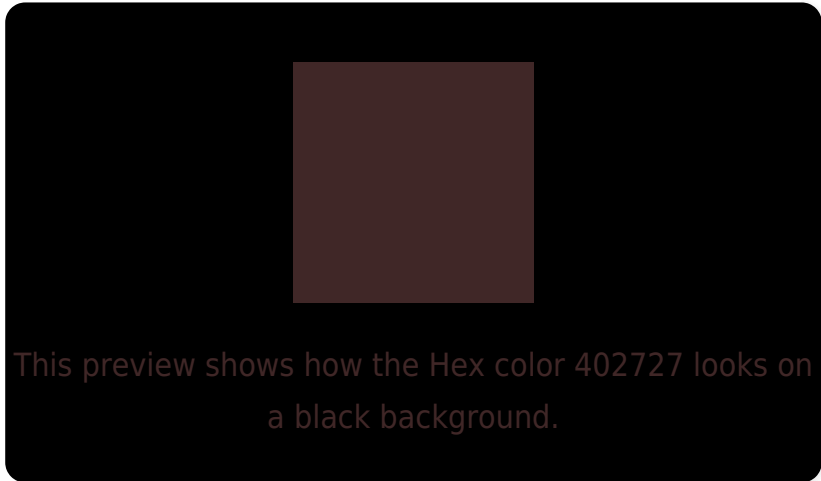
Large Text (above 18pt) WCAG AA ✓ Pass

Any Text WCAG AA ✓ Pass

Large Text (above 18pt) WCAG AAA ✓ Pass

Any Text WCAG AAA ✓ Pass

# Black Background



## Color Contrast Check

Large Text (above 18pt) WCAG AA × Fail

Any Text WCAG AA × Fail

Large Text (above 18pt) WCAG AAA × Fail

Any Text WCAG AAA × Fail

If you want to check with other color combinations, try the [Color Contrast Checker](#).



## Hex 402727 Background



This preview shows how black text looks on a background with the Hex color 402727.

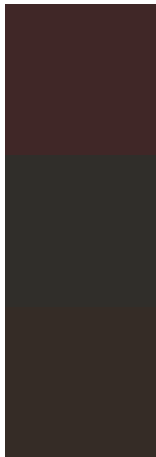


This preview shows how white text looks on a background with the Hex color 402727.

# Color Blindness Simulation

Color vision deficiency is a very complex topic, and I could not describe the different causes any better than Wikipedia does, so if you want to learn more, you should check out their [article about color blindness](#).

## Dichromacy



**Original Color**  
402727

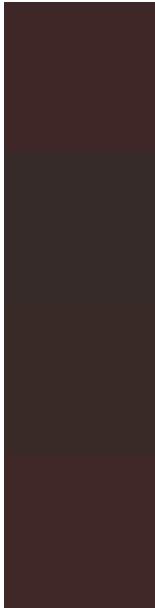
**Protanopia**  
302E2A

**Deuteranopia**  
352C26



**Tritanopia**  
402729

# Trichromacy



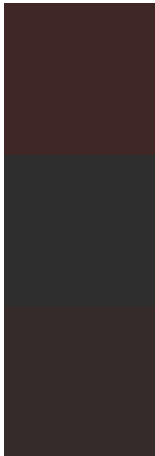
**Original Color**  
402727

**Protanomaly**  
362B29

**Deuteranomaly**  
392A26

**Tritanomaly**  
402728

# Monochromacy



**Original Color**  
402727

**Achromatopsia**  
2E2E2E

**Achromatomaly**  
352B2B

# CSS Examples

## Text

The CSS property to change the color of the text to Hex 402727 is called "color". The color property can be set on classes, ids or directly on the HTML element.

This example shows how text in the color #402727 looks like.

```
.text, #text, p{  
    color:#402727  
}
```

If you want to add a text shadow in that color use the text-shadow property, you can generate a text shadow directly with our [CSS Text Shadow Generator](#).

Here you see how black text with a 4 pixel #402727 colored shadow looks like.

```
.shadow{ text-shadow: 4px 4px 2px #402727
}
```

## Border

The CSS property to change the border of an element to Hex 402727 is called "border". The border property can be set on classes, ids or directly on the HTML element.

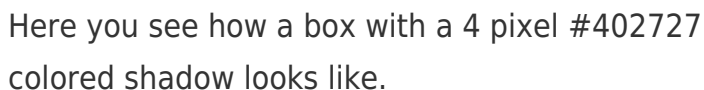
This example shows the color as border, it can be applied via the CSS property "border" or "border-color".

```
.border, #border, table{ border:4px solid
#402727 }
```

If only the border color should be changed use the property `border-color`.

```
.border{ border-color:#402727 }
```

If you want to add a box shadow in that color use:



Here you see how a box with a 4 pixel #402727 colored shadow looks like.

```
.boxshadow{ -moz-box-shadow:4px 4px 4px  
4px #402727; -webkit-box-shadow:4px 4px  
4px 4px #402727; box-shadow:4px 4px 4px  
4px #402727 }
```

# Background

The CSS property to change the background color of an element to Hex 402727 is called "background". The background property can be set on classes, ids or directly on the HTML element.

```
.background, #background, body{  
background:#402727 }
```

If only the background color should be changed can be used:

```
.background{ background-color:#402727 }
```

This example shows the color as background, it is applied via the CSS property "background".

To optimize and compress your CSS code, you can use our [online CSS compressor and optimizer](#) based on csstidy. If you want to create a linear or radial gradient as background or border, check our [CSS Gradient Generator](#).



# Hey! You found this booklet interesting? Support Converting Colors with the new Membership Option!

The pro membership hides all ads, plus gives you double the colors in the color bucket, and more awesome pro features!

**[Learn more, Memberships starting at \\$2.50/m!](#)**

**Follow me  
on Twitter!**

@ConvertingColor