

Converting Colors

Hex(412A2B)

Have a look what the booklet for
Hex(412A2B) contains.

Hex(412A2B)	3
<i>Conversions</i>	4
<i>Details</i>	6
<i>Harmonies</i>	11
<i>Previews</i>	23
<i>Color Blindness Simulation</i>	26
<i>CSS Examples</i>	29

Color

Hex(412A2B)

Conversions

Conversions Part 1

Format	Color
Hex	412A2B
RGB	65, 42, 43
RGB Percent	25%, 16%, 17%
CMY	0.7451, 0.8353, 0.8314
CMYK	0.00, 0.35, 0.34, 0.75
HSL	357°, 21%, 21%
HSV	357°, 35%, 25%
XYZ	3.4440, 2.9542, 2.6742
YIQ	48.9910, 13.3870, 5.1870

Conversions

Conversions Part 2

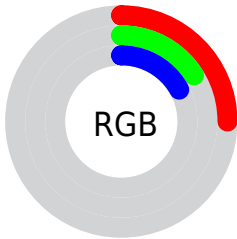
Format	Color
RYB	65, 42, 43
Decimal	4270635
CIE Lab	19.86, 10.89, 3.69
CIE LCh	20, 11.496, 18.727
Yxy	2.9542, 0.3796, 0.3256
Android (android.graphics.Color)	4282460715 (0xFF412A2B)
YUV	48.9910, -2.9536, 14.0399
Hunter-Lab	17.1877, 5.6885, 2.8066

Details

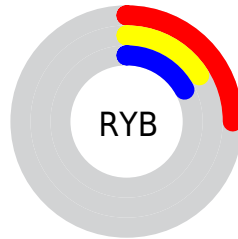
The Hex color **412A2B** is a dark color, and the websafe version is hex **333333**. A complement of this color would be **2A4140**, and the grayscale version is **313131**.

A 20% lighter version of the original color is **725858**, and **160000** is the 20% darker color. If you saturate the color by 10%, you get **412425**, and if you desaturate by 10%, it is **413131**.

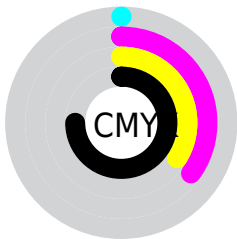
Distribution



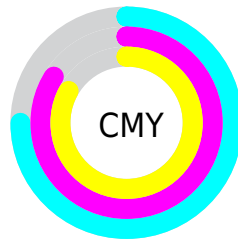
- Red (25%)
- Green (16%)
- Blue (17%)



- Red (25%)
- Yellow (16%)
- Blue (17%)



- Cyan (0%)
- Magenta (35%)
- Yellow (34%)
- Black (75%)



- Cyan (75%)
- Magenta (84%)
- Yellow (83%)

Brightness & Saturation Gradients

These gradients show how the Hex color 412A2B changes by changing the brightness by 10 percent. The first figure shows a shift by +10% for each color and the second figure -10%.

Similar to the brightness gradients but the following saturation gradients show a change of the Hex color 412A2B by changing the saturation by 10% instead.



412A2B



412A2B

FFFFFF



2A1517



725858



160000



8B7071



000000



A6898A



C1A4A4



DDBFC0



FADBDB



FFF7F8



412A2B



412A2B

■ 412425

■ 413131

■ 411D1F

■ 413737

■ 411618

■ 413E3E

■ 411012

■ 414444

■ 41090C

■ 414A4A

■ 410306

■ 415150

■ 410003

■ 415857

■ 415E5D

■ 416563

Harmonies

Analogous

The Analogous color harmony consists of three colors that are next to each other on the color wheel.



3F2A34



412A2B



3F2C24

Triad

The Triadic color harmony groups three colors that are evenly spaced from another and form a triangle on the color wheel.



412A2B



273325



213240

Complementary

The Complementary color scheme is a pair of colors which are on the opposite of each other on the color wheel.



412A2B



2A4140

Split Complementary

Split-complementary colors differ from the complementary color scheme. The scheme consists of three colors, the original color and two neighbors of the complement color.



18343C



412A2B



1E342C

Square

The Square scheme is like the rectangle color scheme, but the four colors are evenly spaced on the color wheel.



412A2B



313120



173535



2D2F40

Rectangle

The Rectangle color scheme consists of four colors that form a rectangle on the color wheel.



412A2B



3B2D21



173535



1D333F

Sweetspot

The Sweet Spot groups the original color and five complimentary colors.



412A2B



544B4B



402A41



2B2626



ABABAB



2B2B2B

Same Dimension

The Same Dimension uses a secret algorithm to generate beautiful new colors.



412A2B



543132



41342A



211E1E



610004



E0000A

Inverse Universe

The Inverse Universe completely reimagines the original color for something new.



412A2B



543132



2A3741



211E1E



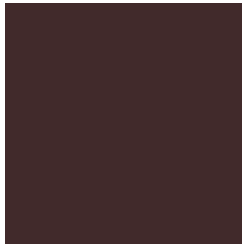
610004



E0000A

Previews

White Background



This preview shows how the Hex color 412A2B looks on a white background.

Color Contrast Check

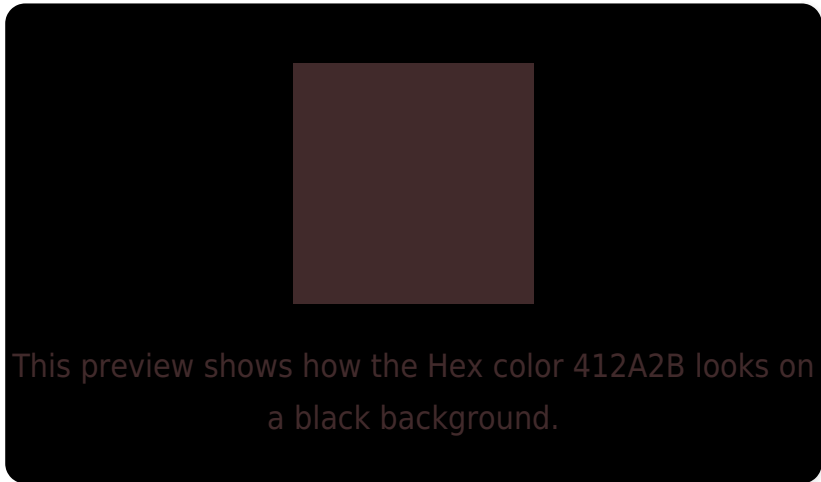
Large Text (above 18pt) WCAG AA ✓ Pass

Any Text WCAG AA ✓ Pass

Large Text (above 18pt) WCAG AAA ✓ Pass

Any Text WCAG AAA ✓ Pass

Black Background



Color Contrast Check

Large Text (above 18pt) WCAG AA × Fail

Any Text WCAG AA × Fail

Large Text (above 18pt) WCAG AAA × Fail

Any Text WCAG AAA × Fail

If you want to check with other color combinations, try the [Color Contrast Checker](#).

Hex 412A2B Background



This preview shows how black text looks on a background with the Hex color 412A2B.

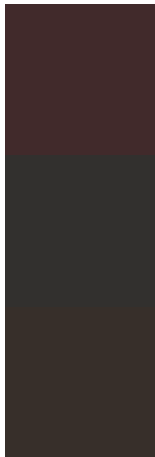


This preview shows how white text looks on a background with the Hex color 412A2B.

Color Blindness Simulation

Color vision deficiency is a very complex topic, and I could not describe the different causes any better than Wikipedia does, so if you want to learn more, you should check out their [article about color blindness](#).

Dichromacy



Original Color
412A2B

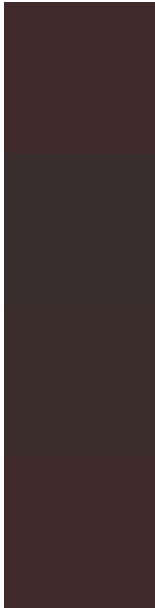
Protanopia
32302E

Deuteranopia
372F2A



Tritanopia
412A2D

Trichromacy



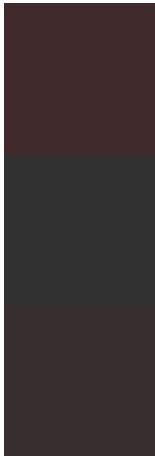
Original Color
412A2B

Protanomaly
372E2D

Deuteranomaly
3B2D2A

Tritanomaly
412A2C

Monochromacy



Original Color
412A2B

Achromatopsia
313131

Achromatomaly
372E2F

CSS Examples

Text

The CSS property to change the color of the text to Hex 412A2B is called "color". The color property can be set on classes, ids or directly on the HTML element.

This example shows how text in the color #412A2B looks like.

```
.text, #text, p{  
    color:#412A2B  
}
```

If you want to add a text shadow in that color use the text-shadow property, you can generate a text shadow directly with our [CSS Text Shadow Generator](#).

Here you see how black text with a 4 pixel #412A2B colored shadow looks like.

```
.shadow{ text-shadow: 4px 4px 2px #412A2B
}
```

Border

The CSS property to change the border of an element to Hex 412A2B is called "border". The border property can be set on classes, ids or directly on the HTML element.

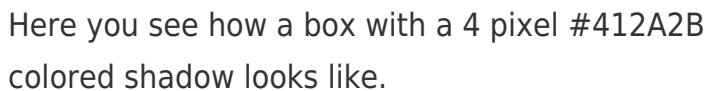
This example shows the color as border, it can be applied via the CSS property "border" or "border-color".

```
.border, #border, table{ border:4px solid
#412A2B }
```

If only the border color should be changed use the property `border-color`.

```
.border{ border-color:#412A2B }
```

If you want to add a box shadow in that color use:



Here you see how a box with a 4 pixel #412A2B colored shadow looks like.

```
.boxshadow{ -moz-box-shadow:4px 4px 4px  
4px #412A2B; -webkit-box-shadow:4px 4px  
4px 4px #412A2B; box-shadow:4px 4px 4px  
4px #412A2B }
```

Background

The CSS property to change the background color of an element to Hex 412A2B is called "background". The background property can be set on classes, ids or directly on the HTML element.

```
.background, #background, body{  
background:#412A2B }
```

If only the background color should be changed can be used:

```
.background{ background-color:#412A2B }
```

This example shows the color as background, it is applied via the CSS property "background".

To optimize and compress your CSS code, you can use our [online CSS compressor and optimizer](#) based on csstidy. If you want to create a linear or radial gradient as background or border, check our [CSS Gradient Generator](#).

Hey! You found this booklet interesting? Support Converting Colors with the new Membership Option!

The pro membership hides all ads, plus gives you double the colors in the color bucket, and more awesome pro features!

[Learn more, Memberships starting at \\$2.50/m!](#)

**Follow me
on Twitter!**

@ConvertingColor