

# Converting Colors

Hex(413325)

Have a look what the booklet for  
Hex(413325) contains.

<b>Hex(413325)</b> .....	3
<b><i>Conversions</i></b> .....	4
<b><i>Details</i></b> .....	6
<b><i>Harmonies</i></b> .....	11
<b><i>Previews</i></b> .....	23
<b><i>Color Blindness Simulation</i></b> .....	26
<b><i>CSS Examples</i></b> .....	29

# Color

Hex(413325)

# Conversions

## Conversions Part 1

<b>Format</b>	<b>Color</b>
Hex	413325
RGB	65, 51, 37
RGB Percent	25%, 20%, 15%
CMY	0.7451, 0.8000, 0.8549
CMYK	0.00, 0.22, 0.43, 0.75
HSL	30°, 27%, 20%
HSV	30°, 43%, 25%
XYZ	3.6977, 3.6250, 2.2551
YIQ	53.5900, 12.8380, -1.3860

# Conversions

## Conversions Part 2

<b>Format</b>	<b>Color</b>
<b>RYB</b>	65, 65, 37
Decimal	4272933
CIELab	22.39, 3.94, 11.27
CIELCh	22, 11.937, 70.711
Yxy	3.6250, 0.3861, 0.3785
Android (android.graphics.Color)	4282463013 (0xFF413325)
YUV	53.5900, -8.1789, 10.0066
Hunter-Lab	19.0395, 1.3478, 6.3053

# Details

The Hex color **413325** is a dark color, and the websafe version is hex **333333**. A complement of this color would be **253341**, and the grayscale version is **363636**.

A 20% lighter version of the original color is **726152**, and **140500** is the 20% darker color. If you saturate the color by 10%, you get **41301F**, and if you desaturate by 10%, it is **41362C**.

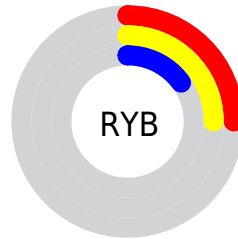
# Distribution



Red (25%)

Green (20%)

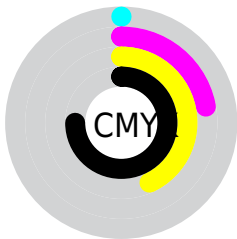
Blue (15%)



Red (25%)

Yellow (25%)

Blue (15%)

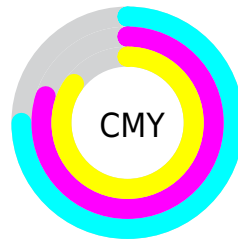


Cyan (0%)

Magenta (22%)

Yellow (43%)

Black (75%)



Cyan (75%)

Magenta (80%)

Yellow (85%)

# Brightness & Saturation Gradients

These gradients show how the Hex color 413325 changes by changing the brightness by 10 percent. The first figure shows a shift by +10% for each color and the second figure -10%.

Similar to the brightness gradients but the following saturation gradients show a change of the Hex color 413325 by changing the saturation by 10% instead.





413325



413325

FFFFFF



2A1E10



726152



140500



8B7A6A



000000



A69483



C1AE9D



DDCAB8



FAE6D4



FFFFF0



413325



413325

■ 41301F

■ 41362C

■ 412D18

■ 413A32

■ 412912

■ 413D39

■ 41260B

■ 41403F

■ 412305

■ 414346

■ 412100

■ 41474C

■ 414A53

■ 414D59

■ 415060

# Harmonies

## Analogous

The Analogous color harmony consists of three colors that are next to each other on the color wheel.



46302A



413325



393624

# Triad

The Triadic color harmony groups three colors that are evenly spaced from another and form a triangle on the color wheel.



413325



1D3B38



3B3243

# Complementary

The Complementary color scheme is a pair of colors which are on the opposite of each other on the color wheel.



413325



253341

# Split Complementary

Split-complementary colors differ from the complementary color scheme. The scheme consists of three colors, the original color and two neighbors of the complement color.



2F3547



413325



1B3A41

# Square

The Square scheme is like the rectangle color scheme, but the four colors are evenly spaced on the color wheel.



413325



253A2F



233846



43303C

# Rectangle

The Rectangle color scheme consists of four colors that form a rectangle on the color wheel.



413325



323826



233846



373345



# Sweetspot

The Sweet Spot groups the original color and five complimentary colors.



413325



544F49



412533



2B2824



ABABAB



2B2B2B



# Same Dimension

The Same Dimension uses a secret algorithm to generate beautiful new colors.



413325



543E28



414125



211F1E



613000



E07000



# Inverse Universe

The Inverse Universe completely reimagines the original color for something new.



253341



283E54



252541



1E1F21



003061

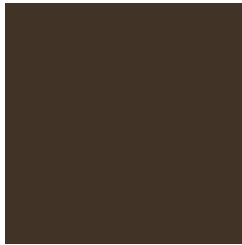


0070E0



# Previews

## White Background



This preview shows how the Hex color 413325 looks on a white background.

## Color Contrast Check

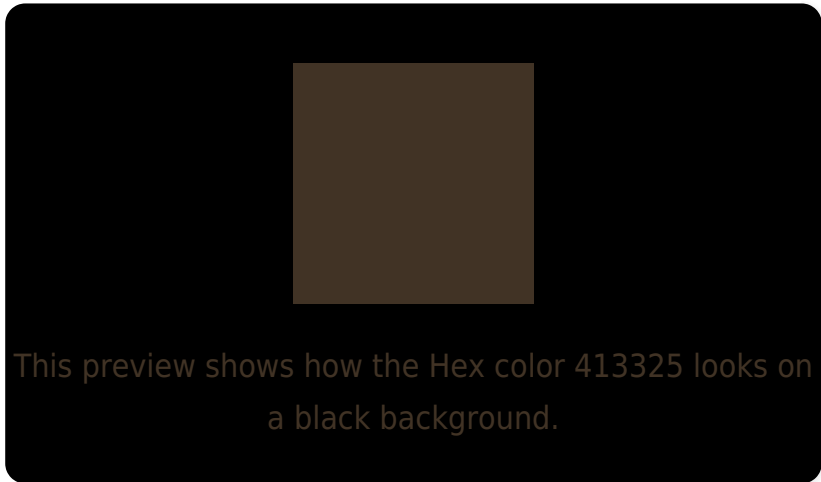
Large Text (above 18pt) WCAG AA ✓ Pass

Any Text WCAG AA ✓ Pass

Large Text (above 18pt) WCAG AAA ✓ Pass

Any Text WCAG AAA ✓ Pass

# Black Background



## Color Contrast Check

Large Text (above 18pt) WCAG AA × Fail

Any Text WCAG AA × Fail

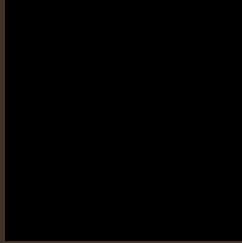
Large Text (above 18pt) WCAG AAA × Fail

Any Text WCAG AAA × Fail

If you want to check with other color combinations, try the [Color Contrast Checker](#).



## Hex 413325 Background



This preview shows how black text looks on a background with the Hex color 413325.

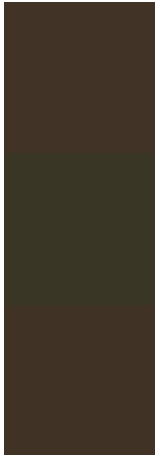


This preview shows how white text looks on a background with the Hex color 413325.

# Color Blindness Simulation

Color vision deficiency is a very complex topic, and I could not describe the different causes any better than Wikipedia does, so if you want to learn more, you should check out their [article about color blindness](#).

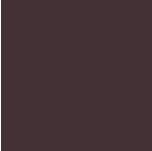
## Dichromacy



**Original Color**  
413325

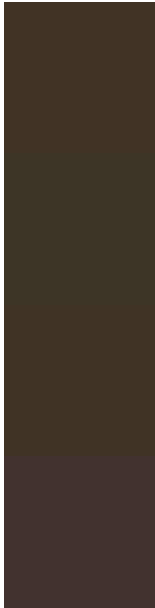
**Protanopia**  
3A3626

**Deuteranopia**  
403325



**Tritanopia**  
433135

# Trichromacy



**Original Color**  
413325

**Protanomaly**  
3D3526

**Deuteranomaly**  
403325

**Tritanomaly**  
42322F

# Monochromacy



**Original Color**  
413325

**Achromatopsia**  
363636

**Achromatomaly**  
3A3530

# CSS Examples

## Text

The CSS property to change the color of the text to Hex 413325 is called "color". The color property can be set on classes, ids or directly on the HTML element.

This example shows how text in the color #413325 looks like.

```
.text, #text, p{  
    color:#413325  
}
```

If you want to add a text shadow in that color use the text-shadow property, you can generate a text shadow directly with our [CSS Text Shadow Generator](#).

Here you see how black text with a 4 pixel #413325 colored shadow looks like.

```
.shadow{ text-shadow: 4px 4px 2px #413325
}
```

## Border

The CSS property to change the border of an element to Hex 413325 is called "border". The border property can be set on classes, ids or directly on the HTML element.

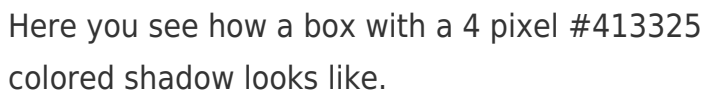
This example shows the color as border, it can be applied via the CSS property "border" or "border-color".

```
.border, #border, table{ border:4px solid
#413325 }
```

If only the border color should be changed use the property `border-color`.

```
.border{ border-color:#413325 }
```

If you want to add a box shadow in that color use:



Here you see how a box with a 4 pixel #413325 colored shadow looks like.

```
.boxshadow{ -moz-box-shadow:4px 4px 4px  
4px #413325; -webkit-box-shadow:4px 4px  
4px 4px #413325; box-shadow:4px 4px 4px  
4px #413325 }
```

# Background

The CSS property to change the background color of an element to Hex 413325 is called "background". The background property can be set on classes, ids or directly on the HTML element.

```
.background, #background, body{  
background:#413325 }
```

If only the background color should be changed can be used:

```
.background{ background-color:#413325 }
```

This example shows the color as background, it is applied via the CSS property "background".

To optimize and compress your CSS code, you can use our [online CSS compressor and optimizer](#) based on csstidy. If you want to create a linear or radial gradient as background or border, check our [CSS Gradient Generator](#).



Hey! You found this booklet interesting? Support Converting Colors with the new Membership Option!

The pro membership hides all ads, plus gives you double the colors in the color bucket, and more awesome pro features!

**[Learn more, Memberships starting at \\$2.50/m!](#)**

**Follow me  
on Twitter!**

@ConvertingColor