

# Converting Colors

Hex(41372A)

Have a look what the booklet for  
Hex(41372A) contains.

<b>Hex(41372A)</b> .....	3
<b><i>Conversions</i></b> .....	4
<b><i>Details</i></b> .....	6
<b><i>Harmonies</i></b> .....	11
<b><i>Previews</i></b> .....	23
<b><i>Color Blindness Simulation</i></b> .....	26
<b><i>CSS Examples</i></b> .....	29

# Color

Hex(41372A)

# Conversions

## Conversions Part 1

Format	Color
Hex	41372A
RGB	65, 55, 42
RGB Percent	25%, 22%, 16%
CMY	0.7451, 0.7843, 0.8353
CMYK	0.00, 0.15, 0.35, 0.75
HSL	34°, 21%, 21%
HSV	34°, 35%, 25%
XYZ	3.9641, 4.0234, 2.7581
YIQ	56.5080, 10.1330, -1.9230

# Conversions

## Conversions Part 2

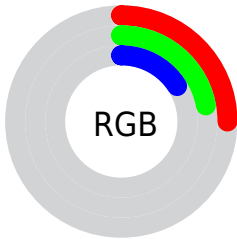
<b>Format</b>	<b>Color</b>
<a href="#">RYB</a>	<a href="#">60, 65, 42</a>
Decimal	<a href="#">4273962</a>
CIELab	<a href="#">23.75, 2.07, 9.79</a>
CIELCh	<a href="#">24, 10.010, 78.090</a>
Yxy	<a href="#">4.0234, 0.3689, 0.3744</a>
Android (android.graphics.Color)	<a href="#">4282464042 (0xFF41372A)</a>
YUV	<a href="#">56.5080, -7.1524, 7.4475</a>
Hunter-Lab	<a href="#">20.0583, 0.1745, 5.8881</a>

# Details

The Hex color **41372A** is a dark color, and the websafe version is hex **333333**. A complement of this color would be **2A3441**, and the grayscale version is **393939**.

A 20% lighter version of the original color is **716657**, and **160B00** is the 20% darker color. If you saturate the color by 10%, you get **413424**, and if you desaturate by 10%, it is **413A31**.

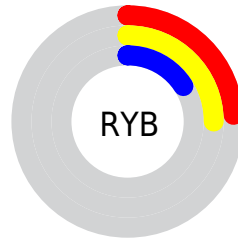
# Distribution



Red (25%)

Green (22%)

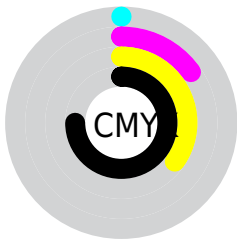
Blue (16%)



Red (24%)

Yellow (25%)

Blue (16%)

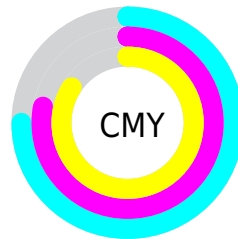


Cyan (0%)

Magenta (15%)

Yellow (35%)

Black (75%)



Cyan (75%)

Magenta (78%)

Yellow (84%)

# Brightness & Saturation Gradients

These gradients show how the Hex color 41372A changes by changing the brightness by 10 percent. The first figure shows a shift by +10% for each color and the second figure -10%.

Similar to the brightness gradients but the following saturation gradients show a change of the Hex color 41372A by changing the saturation by 10% instead.





41372A



41372A

FFFFFF



2B2216



716657



160B00



8B7F70



000000



A59989



C1B3A3



DDCFBF



F9EBDA



FFFFFF7



41372A



41372A

■ 413424

■ 413A31

■ 41311D

■ 413D37

■ 412F16

■ 413F3E

■ 412C10

■ 414244

■ 412909

■ 41454A

■ 412603

■ 414851

■ 412500

■ 414B58

■ 414E5E

■ 415065

# Harmonies

## Analogous

The Analogous color harmony consists of three colors that are next to each other on the color wheel.



46352E



41372A



39392A

# Triad

The Triadic color harmony groups three colors that are evenly spaced from another and form a triangle on the color wheel.



41372A



243D3D



3F3543

# Complementary

The Complementary color scheme is a pair of colors which are on the opposite of each other on the color wheel.



41372A



2A3441

# Split Complementary

Split-complementary colors differ from the complementary color scheme. The scheme consists of three colors, the original color and two neighbors of the complement color.



363847



41372A



253C43

# Square

The Square scheme is like the rectangle color scheme, but the four colors are evenly spaced on the color wheel.



41372A



293D35



2C3A47



46333C

# Rectangle

The Rectangle color scheme consists of four colors that form a rectangle on the color wheel.



41372A



343B2D



2C3A47



3C3644



# Sweetspot

The Sweet Spot groups the original color and five complimentary colors.



41372A



54504B



412A34



2B2926



ABABAB



2B2B2B



# Same Dimension

The Same Dimension uses a secret algorithm to generate beautiful new colors.



41372A



544531



40412A



21201E



613700



E07F00



# Inverse Universe

The Inverse Universe completely reimagines the original color for something new.



2A3441



314054



2B2A41



1E1F21



002A61

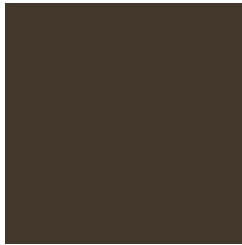


0062E0



# Previews

## White Background



This preview shows how the Hex color 41372A looks on a white background.

## Color Contrast Check

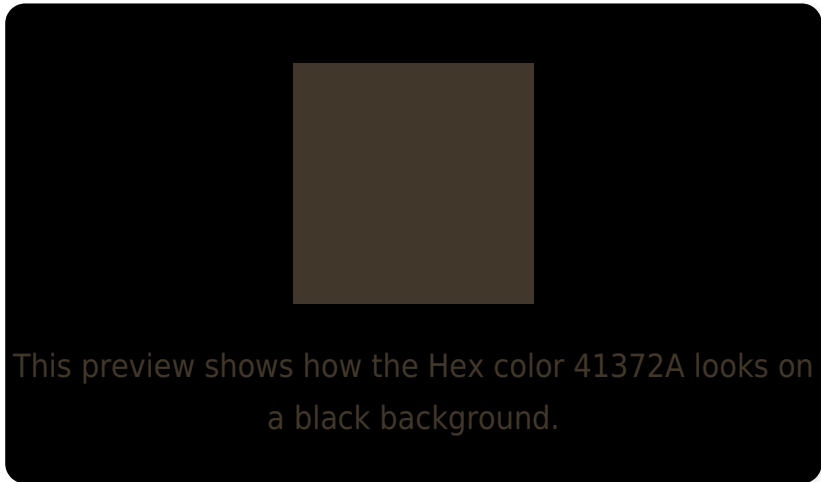
Large Text (above 18pt) WCAG AA ✓ Pass

Any Text WCAG AA ✓ Pass

Large Text (above 18pt) WCAG AAA ✓ Pass

Any Text WCAG AAA ✓ Pass

# Black Background



## Color Contrast Check

Large Text (above 18pt) WCAG AA × Fail

Any Text WCAG AA × Fail

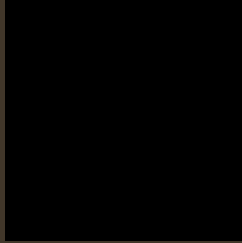
Large Text (above 18pt) WCAG AAA × Fail

Any Text WCAG AAA × Fail

If you want to check with other color combinations, try the [Color Contrast Checker](#).



## Hex 41372A Background



This preview shows how black text looks on a background with the Hex color 41372A.



This preview shows how white text looks on a background with the Hex color 41372A.

# Color Blindness Simulation

Color vision deficiency is a very complex topic, and I could not describe the different causes any better than Wikipedia does, so if you want to learn more, you should check out their [article about color blindness](#).

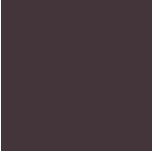
## Dichromacy



**Original Color**  
41372A

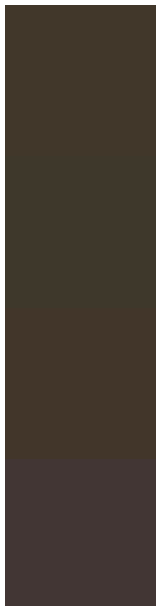
**Protanopia**  
3D392B

**Deuteranopia**  
43362A



**Tritanopia**  
433539

# Trichromacy



**Original Color**

41372A

**Protanomaly**

3E382B

**Deuteranomaly**

42362A

**Tritanomaly**

423634

# Monochromacy



**Original Color**

41372A

**Achromatopsia**

393939

**Achromatomaly**

3C3834

# CSS Examples

## Text

The CSS property to change the color of the text to Hex 41372A is called "color". The color property can be set on classes, ids or directly on the HTML element.

This example shows how text in the color #41372A looks like.

```
.text, #text, p{  
    color:#41372A  
}
```

If you want to add a text shadow in that color use the text-shadow property, you can generate a text shadow directly with our [CSS Text Shadow Generator](#).

Here you see how black text with a 4 pixel #41372A colored shadow looks like.

```
.shadow{ text-shadow: 4px 4px 2px #41372A
}
```

## Border

The CSS property to change the border of an element to Hex 41372A is called "border". The border property can be set on classes, ids or directly on the HTML element.

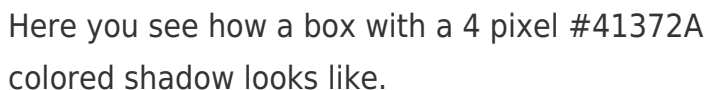
This example shows the color as border, it can be applied via the CSS property "border" or "border-color".

```
.border, #border, table{ border:4px solid
#41372A }
```

If only the border color should be changed use the property border-color.

```
.border{ border-color:#41372A }
```

If you want to add a box shadow in that color use:



Here you see how a box with a 4 pixel #41372A colored shadow looks like.

```
.boxshadow{ -moz-box-shadow:4px 4px 4px  
4px #41372A; -webkit-box-shadow:4px 4px  
4px 4px #41372A; box-shadow:4px 4px 4px  
4px #41372A }
```

# Background

The CSS property to change the background color of an element to Hex 41372A is called "background". The background property can be set on classes, ids or directly on the HTML element.

```
.background, #background, body{  
background:#41372A }
```

If only the background color should be changed can be used:

```
.background{ background-color:#41372A }
```

This example shows the color as background, it is applied via the CSS property "background".

To optimize and compress your CSS code, you can use our [online CSS compressor and optimizer](#) based on csstidy. If you want to create a linear or radial gradient as background or border, check our [CSS Gradient Generator](#).



Hey! You found this booklet interesting? Support Converting Colors with the new Membership Option!

The pro membership hides all ads, plus gives you double the colors in the color bucket, and more awesome pro features!

**[Learn more, Memberships starting at \\$2.50/m!](#)**

**Follow me  
on Twitter!**

@ConvertingColor