

# Converting Colors

Hex(421609)

Have a look what the booklet for  
Hex(421609) contains.

<b>Hex(421609)</b> .....	3
<b><i>Conversions</i></b> .....	4
<b><i>Details</i></b> .....	6
<b><i>Harmonies</i></b> .....	11
<b><i>Previews</i></b> .....	23
<b><i>Color Blindness Simulation</i></b> .....	26
<b><i>CSS Examples</i></b> .....	29

**Color**

**Hex(421609)**

# Conversions

## Conversions Part 1

Format	Color
Hex	421609
RGB	66, 22, 9
RGB Percent	26%, 9%, 4%
CMY	0.7412, 0.9137, 0.9647
CMYK	0.00, 0.67, 0.86, 0.74
HSL	14°, 76%, 15%
HSV	14°, 86%, 26%
XYZ	2.5830, 1.7518, 0.4604
YIQ	33.6740, 30.3970, 5.2850

# Conversions

## Conversions Part 2

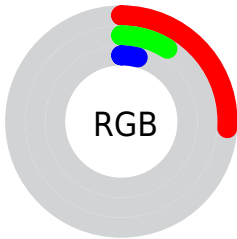
<b>Format</b>	<b>Color</b>
<a href="#">RYB</a>	<a href="#">66, 26, 9</a>
Decimal	<a href="#">4331017</a>
CIELab	<a href="#">14.13, 20.47, 17.77</a>
CIELCh	<a href="#">14, 27.106, 40.965</a>
Yxy	<a href="#">1.7518, 0.5387, 0.3653</a>
Android (android.graphics.Color)	<a href="#">4282521097 (0xFF421609)</a>
YUV	<a href="#">33.6740, -12.1643, 28.3499</a>
Hunter-Lab	<a href="#">13.2355, 11.6730, 7.2023</a>

# Details

The Hex color **421609** is a dark color, and the websafe version is hex **330000**. A complement of this color would be **093542**, and the grayscale version is **222222**.

A 20% lighter version of the original color is **764335**, and **000000** is the 20% darker color. If you saturate the color by 10%, you get **421102**, and if you desaturate by 10%, it is **421B10**.

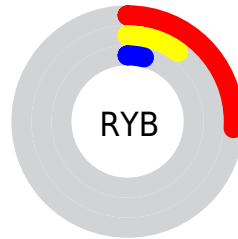
# Distribution



Red (26%)

Green (9%)

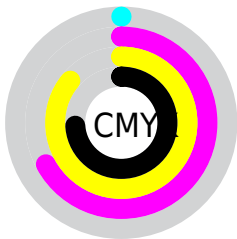
Blue (4%)



Red (26%)

Yellow (10%)

Blue (4%)

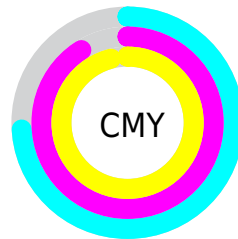


Cyan (0%)

Magenta (67%)

Yellow (86%)

Black (74%)



Cyan (74%)

Magenta (91%)

Yellow (96%)

# Brightness & Saturation Gradients

These gradients show how the Hex color 421609 changes by changing the brightness by 10 percent. The first figure shows a shift by +10% for each color and the second figure -10%.

Similar to the brightness gradients but the following saturation gradients show a change of the Hex color 421609 by changing the saturation by 10% instead.



 421609


 421609

 FFFCE9

 2A0000

 764335

 000000

 915B4C

 AC7364

 C98D7D

 E5A897

 FFC3B1

 FFDFCD

 421609

 421609

■ 421102

■ 421B10

■ 420F00

■ 422016

■ 42251D

■ 422A23

■ 422F2A

■ 423531

■ 423A37

■ 423F3E

■ 424444

# Harmonies

## Analogous

The Analogous color harmony consists of three colors that are next to each other on the color wheel.



46101E



421609



371E00

# Triad

The Triadic color harmony groups three colors that are evenly spaced from another and form a triangle on the color wheel.



421609



002C17



032449

# Complementary

The Complementary color scheme is a pair of colors which are on the opposite of each other on the color wheel.



421609



093542

# Split Complementary

Split-complementary colors differ from the complementary color scheme. The scheme consists of three colors, the original color and two neighbors of the complement color.



002948



421609



002D2B

# Square

The Square scheme is like the rectangle color scheme, but the four colors are evenly spaced on the color wheel.



421609



132900



002C3C



2D1C41

# Rectangle

The Rectangle color scheme consists of four colors that form a rectangle on the color wheel.



421609



2D2300



002C3C



00264A



# Sweetspot

The Sweet Spot groups the original color and five complimentary colors.



421609



574540



420936



2B211E



ABABAB



2B2B2B



# Same Dimension

The Same Dimension uses a secret algorithm to generate beautiful new colors.



421609



571400



423209



211F1E



611600



E03300



# Inverse Universe

The Inverse Universe completely reimagines the original color for something new.



093542



004357



091942



1E2021



004B61

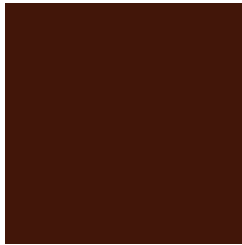


00ADE0



# Previews

## White Background



This preview shows how the Hex color 421609 looks on a white background.

## Color Contrast Check

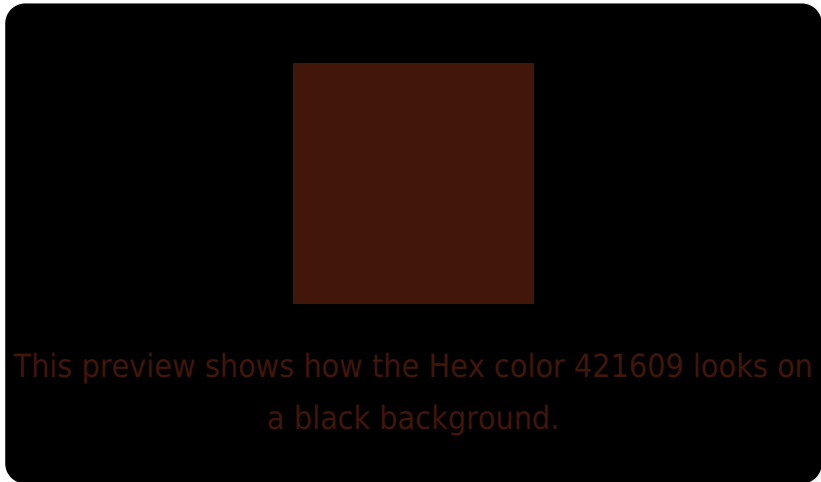
Large Text (above 18pt) WCAG AA ✓ Pass

Any Text WCAG AA ✓ Pass

Large Text (above 18pt) WCAG AAA ✓ Pass

Any Text WCAG AAA ✓ Pass

# Black Background



## Color Contrast Check

Large Text (above 18pt) WCAG AA × Fail

Any Text WCAG AA × Fail

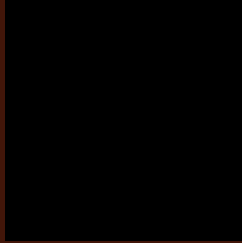
Large Text (above 18pt) WCAG AAA × Fail

Any Text WCAG AAA × Fail

If you want to check with other color combinations, try the [Color Contrast Checker](#).



## Hex 421609 Background



This preview shows how black text looks on a background with the Hex color 421609.

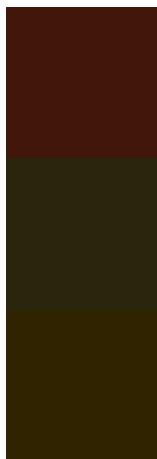


This preview shows how white text looks on a background with the Hex color 421609.

# Color Blindness Simulation

Color vision deficiency is a very complex topic, and I could not describe the different causes any better than Wikipedia does, so if you want to learn more, you should check out their [article about color blindness](#).

## Dichromacy



**Original Color**  
421609

**Protanopia**  
2A250D

**Deuteranopia**  
2F2300



**Tritanopia**  
421516

# Trichromacy



**Original Color**  
421609

**Protanomaly**  
33200C

**Deuteranomaly**  
361E03

**Tritanomaly**  
421511

# Monochromacy



**Original Color**  
421609

**Achromatopsia**  
222222

**Achromatomaly**  
2E1E19

# CSS Examples

## Text

The CSS property to change the color of the text to Hex 421609 is called "color". The color property can be set on classes, ids or directly on the HTML element.

This example shows how text in the color #421609 looks like.

```
.text, #text, p{  
    color:#421609  
}
```

If you want to add a text shadow in that color use the text-shadow property, you can generate a text shadow directly with our [CSS Text Shadow Generator](#).

Here you see how black text with a 4 pixel #421609 colored shadow looks like.

```
.shadow{ text-shadow: 4px 4px 2px #421609
}
```

## Border

The CSS property to change the border of an element to Hex 421609 is called "border". The border property can be set on classes, ids or directly on the HTML element.

This example shows the color as border, it can be applied via the CSS property "border" or "border-color".

```
.border, #border, table{ border:4px solid
#421609 }
```

If only the border color should be changed use the property border-color.

```
.border{ border-color:#421609 }
```

If you want to add a box shadow in that color use:

Here you see how a box with a 4 pixel #421609 colored shadow looks like.

```
.boxshadow{ -moz-box-shadow:4px 4px 4px  
4px #421609; -webkit-box-shadow:4px 4px  
4px 4px #421609; box-shadow:4px 4px 4px  
4px #421609 }
```

# Background

The CSS property to change the background color of an element to Hex 421609 is called "background". The background property can be set on classes, ids or directly on the HTML element.

```
.background, #background, body{  
background:#421609 }
```

If only the background color should be changed can be used:

```
.background{ background-color:#421609 }
```

This example shows the color as background, it is applied via the CSS property "background".

To optimize and compress your CSS code, you can use our [online CSS compressor and optimizer](#) based on csstidy. If you want to create a linear or radial gradient as background or border, check our [CSS Gradient Generator](#).



Hey! You found this booklet  
interesting? Support Converting  
Colors with the new Membership  
Option!

The pro membership hides all ads, plus gives you  
double the colors in the color bucket, and more  
awesome pro features!

**[Learn more, Memberships starting at \\$2.50/m!](#)**

**Follow me  
on Twitter!**

@ConvertingColor