

# Converting Colors

Hex(42160D)

Have a look what the booklet for  
Hex(42160D) contains.

<b>Hex(42160D)</b> .....	3
<b><i>Conversions</i></b> .....	4
<b><i>Details</i></b> .....	6
<b><i>Harmonies</i></b> .....	11
<b><i>Previews</i></b> .....	23
<b><i>Color Blindness Simulation</i></b> .....	26
<b><i>CSS Examples</i></b> .....	29

**Color**

**Hex(42160D)**

# Conversions

## Conversions Part 1

Format	Color
Hex	42160D
RGB	66, 22, 13
RGB Percent	26%, 9%, 5%
CMY	0.7412, 0.9137, 0.9490
CMYK	0.00, 0.67, 0.80, 0.74
HSL	10°, 67%, 15%
HSV	10°, 80%, 26%
XYZ	2.6063, 1.7611, 0.5833
YIQ	34.1300, 29.1130, 6.5290

# Conversions

## Conversions Part 2

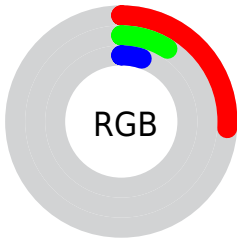
<b>Format</b>	<b>Color</b>
<b>RYB</b>	66, 24, 13
Decimal	4331021
CIELab	14.18, 20.69, 16.10
CIElCh	14, 26.219, 37.898
Yxy	1.7611, 0.5264, 0.3557
Android (android.graphics.Color)	4282521101 (0xFF42160D)
YUV	34.1300, -10.4171, 27.9500
Hunter-Lab	13.2707, 11.8329, 6.6834

# Details

The Hex color **42160D** is a dark color, and the websafe version is hex **330000**. A complement of this color would be **0D3942**, and the grayscale version is **222222**.

A 20% lighter version of the original color is **764338**, and **000000** is the 20% darker color. If you saturate the color by 10%, you get **421106**, and if you desaturate by 10%, it is **421B14**.

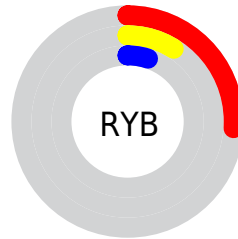
# Distribution



Red (26%)

Green (9%)

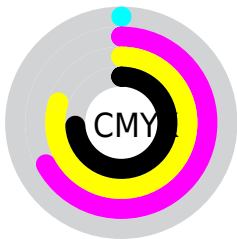
Blue (5%)



Red (26%)

Yellow (9%)

Blue (5%)

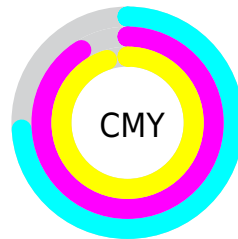


Cyan (0%)

Magenta (67%)

Yellow (80%)

Black (74%)



Cyan (74%)

Magenta (91%)

Yellow (95%)

# Brightness & Saturation Gradients

These gradients show how the Hex color 42160D changes by changing the brightness by 10 percent. The first figure shows a shift by +10% for each color and the second figure -10%.

Similar to the brightness gradients but the following saturation gradients show a change of the Hex color 42160D by changing the saturation by 10% instead.



 42160D

 42160D

 FFFCED

 2A0000

 764338

 000000

 915B4F

 AC7467

 C88D80

 E5A89A

 FFC3B5

 FFD0D0

 42160D

 42160D

■ 421106

■ 421B14

■ 420B00

■ 42211A

■ 422621

■ 422C27

■ 42312E

■ 423735

■ 423C3B

■ 424242

■ 424748

# Harmonies

## Analogous

The Analogous color harmony consists of three colors that are next to each other on the color wheel.



451120



42160D



391E00

# Triad

The Triadic color harmony groups three colors that are evenly spaced from another and form a triangle on the color wheel.



42160D



002C15



002548

# Complementary

The Complementary color scheme is a pair of colors which are on the opposite of each other on the color wheel.



42160D



0D3942

# Split Complementary

Split-complementary colors differ from the complementary color scheme. The scheme consists of three colors, the original color and two neighbors of the complement color.



002A46



42160D



002C28

# Square

The Square scheme is like the rectangle color scheme, but the four colors are evenly spaced on the color wheel.



42160D



162900



002C3A



2B1D41

# Rectangle

The Rectangle color scheme consists of four colors that form a rectangle on the color wheel.



42160D



2F2300



002C3A



002749



# Sweetspot

The Sweet Spot groups the original color and five complimentary colors.



42160D



574542



420D39



2B211F



ABABAB



2B2B2B



# Same Dimension

The Same Dimension uses a secret algorithm to generate beautiful new colors.



42160D



571203



42300D



211E1E



611000



E02600



# Inverse Universe

The Inverse Universe completely reimagines the original color for something new.



0D3942



034957



0D1F42



1E2121



005061

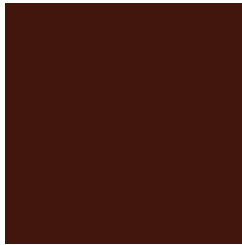


00BAE0



# Previews

## White Background



This preview shows how the Hex color 42160D looks on a white background.

## Color Contrast Check

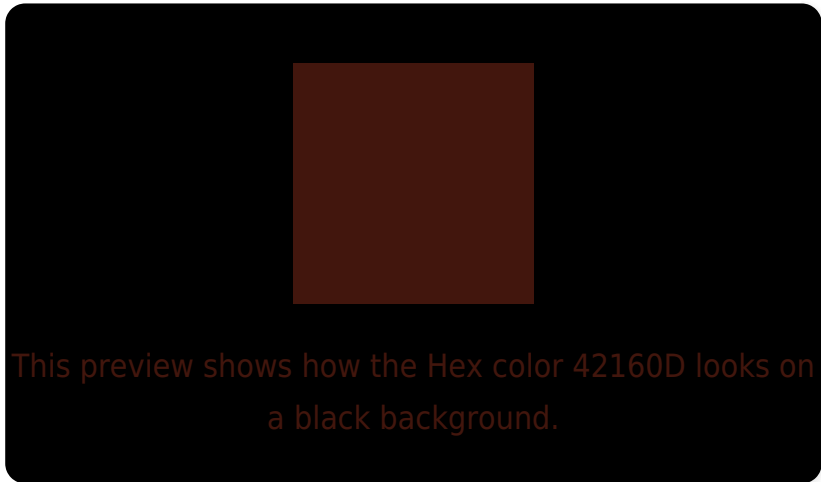
Large Text (above 18pt) WCAG AA ✓ Pass

Any Text WCAG AA ✓ Pass

Large Text (above 18pt) WCAG AAA ✓ Pass

Any Text WCAG AAA ✓ Pass

# Black Background



## Color Contrast Check

Large Text (above 18pt) WCAG AA × Fail

Any Text WCAG AA × Fail

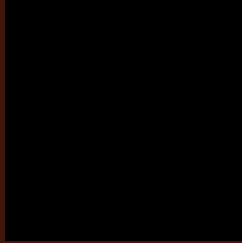
Large Text (above 18pt) WCAG AAA × Fail

Any Text WCAG AAA × Fail

If you want to check with other color combinations, try the [Color Contrast Checker](#).



## Hex 42160D Background



This preview shows how black text looks on a background with the Hex color 42160D.

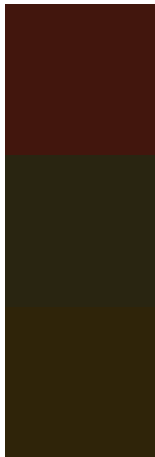


This preview shows how white text looks on a background with the Hex color 42160D.

# Color Blindness Simulation

Color vision deficiency is a very complex topic, and I could not describe the different causes any better than Wikipedia does, so if you want to learn more, you should check out their [article about color blindness](#).

## Dichromacy



**Original Color**  
42160D

**Protanopia**  
292511

**Deuteranopia**  
2F2409



**Tritanopia**  
421516

# Trichromacy



**Original Color**

42160D

**Protanomaly**

322010

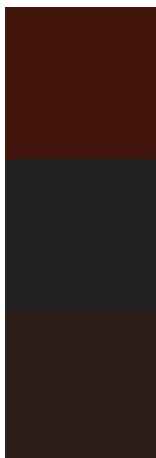
**Deuteranomaly**

361F0A

**Tritanomaly**

421513

# Monochromacy



**Original Color**

42160D

**Achromatopsia**

222222

**Achromatomaly**

2E1E1A

# CSS Examples

## Text

The CSS property to change the color of the text to Hex 42160D is called "color". The color property can be set on classes, ids or directly on the HTML element.

This example shows how text in the color #42160D looks like.

```
.text, #text, p{  
    color:#42160D  
}
```

If you want to add a text shadow in that color use the text-shadow property, you can generate a text shadow directly with our [CSS Text Shadow Generator](#).

Here you see how black text with a 4 pixel #42160D colored shadow looks like.

```
.shadow{ text-shadow: 4px 4px 2px #42160D
}
```

## Border

The CSS property to change the border of an element to Hex 42160D is called "border". The border property can be set on classes, ids or directly on the HTML element.

This example shows the color as border, it can be applied via the CSS property "border" or "border-color".

```
.border, #border, table{ border:4px solid
#42160D }
```

If only the border color should be changed use the property `border-color`.

```
.border{ border-color:#42160D }
```

If you want to add a box shadow in that color use:

Here you see how a box with a 4 pixel #42160D colored shadow looks like.

```
.boxshadow{ -moz-box-shadow:4px 4px 4px  
4px #42160D; -webkit-box-shadow:4px 4px  
4px 4px #42160D; box-shadow:4px 4px 4px  
4px #42160D }
```

# Background

The CSS property to change the background color of an element to Hex 42160D is called "background". The background property can be set on classes, ids or directly on the HTML element.

```
.background, #background, body{  
background:#42160D }
```

If only the background color should be changed can be used:

```
.background{ background-color:#42160D }
```

This example shows the color as background, it is applied via the CSS property "background".

To optimize and compress your CSS code, you can use our [online CSS compressor and optimizer](#) based on csstidy. If you want to create a linear or radial gradient as background or border, check our [CSS Gradient Generator](#).



# Hey! You found this booklet interesting? Support Converting Colors with the new Membership Option!

The pro membership hides all ads, plus gives you double the colors in the color bucket, and more awesome pro features!

**[Learn more, Memberships starting at \\$2.50/m!](#)**

**Follow me  
on Twitter!**

@ConvertingColor