

Converting Colors

Hex(421C1E)

Have a look what the booklet for
Hex(421C1E) contains.

Hex(421C1E)	3
<i>Conversions</i>	4
<i>Details</i>	6
<i>Harmonies</i>	11
<i>Previews</i>	23
<i>Color Blindness Simulation</i>	26
<i>CSS Examples</i>	29

Color

Hex(421C1E)

Conversions

Conversions Part 1

Format	Color
Hex	421C1E
RGB	66, 28, 30
RGB Percent	26%, 11%, 12%
CMY	0.7412, 0.8902, 0.8824
CMYK	0.00, 0.58, 0.55, 0.74
HSL	357°, 40%, 18%
HSV	357°, 58%, 26%
XYZ	2.8964, 2.0825, 1.4776
YIQ	39.5900, 22.0060, 8.6780

Conversions

Conversions Part 2

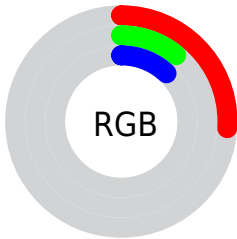
Format	Color
R_{YB}	66, 28, 30
Decimal	4332574
CIE _{Lab}	15.91, 18.61, 7.32
CIE _{LCh}	16, 20.000, 21.469
Yxy	2.0825, 0.4486, 0.3225
Android (android.graphics.Color)	4282522654 (0xFF421C1E)
YUV	39.5900, -4.7279, 23.1616
Hunter-Lab	14.4309, 10.5721, 4.0308

Details

The Hex color **421C1E** is a dark color, and the websafe version is hex **330000**. A complement of this color would be **1C4240**, and the grayscale version is **282828**.

A 20% lighter version of the original color is **74494A**, and **030000** is the 20% darker color. If you saturate the color by 10%, you get **421518**, and if you desaturate by 10%, it is **422324**.

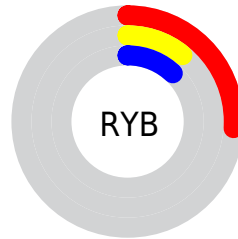
Distribution



Red (26%)

Green (11%)

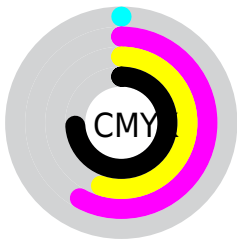
Blue (12%)



Red (26%)

Yellow (11%)

Blue (12%)

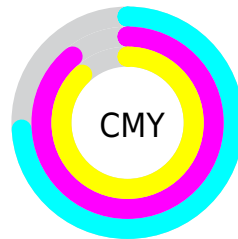


Cyan (0%)

Magenta (58%)

Yellow (55%)

Black (74%)



Cyan (74%)

Magenta (89%)

Yellow (88%)

Brightness & Saturation Gradients

These gradients show how the Hex color 421C1E changes by changing the brightness by 10 percent. The first figure shows a shift by +10% for each color and the second figure -10%.

Similar to the brightness gradients but the following saturation gradients show a change of the Hex color 421C1E by changing the saturation by 10% instead.

■ 421C1E

■ 421C1E

FFFFFF

■ 2B0605

■ 74494A

■ 030000

■ 8F6161

■ 000000

■ AA7A7A

■ C59494

■ E2AFAE

■ FFCACA

■ FFE6E6

■ 421C1E

■ 421C1E

■ 421518

■ 422324

■ 420F11

■ 42292B

■ 42080B

■ 423031

■ 420205

■ 423637

■ 420003

■ 423D3D

■ 424444

■ 424A4A

■ 425150

■ 425756

Harmonies

Analogous

The Analogous color harmony consists of three colors that are next to each other on the color wheel.



401C2C



421C1E



3D2012

Triad

The Triadic color harmony groups three colors that are evenly spaced from another and form a triangle on the color wheel.



421C1E



152D15



002A44

Complementary

The Complementary color scheme is a pair of colors which are on the opposite of each other on the color wheel.



421C1E



1C4240

Split Complementary

Split-complementary colors differ from the complementary color scheme. The scheme consists of three colors, the original color and two neighbors of the complement color.



002D3D



421C1E



002E23

Square

The Square scheme is like the rectangle color scheme, but the four colors are evenly spaced on the color wheel.



421C1E



262A0B



002F32



222542

Rectangle

The Rectangle color scheme consists of four colors that form a rectangle on the color wheel.



421C1E



37240B



002F32



002C42

Sweetspot

The Sweet Spot groups the original color and five complimentary colors.



421C1E



574849



3F1C42



2B2323



ABABAB



2B2B2B

Same Dimension

The Same Dimension uses a secret algorithm to generate beautiful new colors.



421C1E



571B1E



422C1C



211E1E



610005



E0000C

Inverse Universe

The Inverse Universe completely reimagines the original color for something new.



421C1E



571B1E



1C3242



211E1E



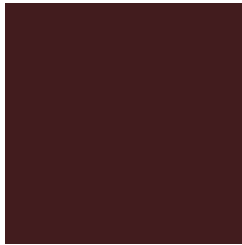
610005



E0000C

Previews

White Background



This preview shows how the Hex color 421C1E looks on a white background.

Color Contrast Check

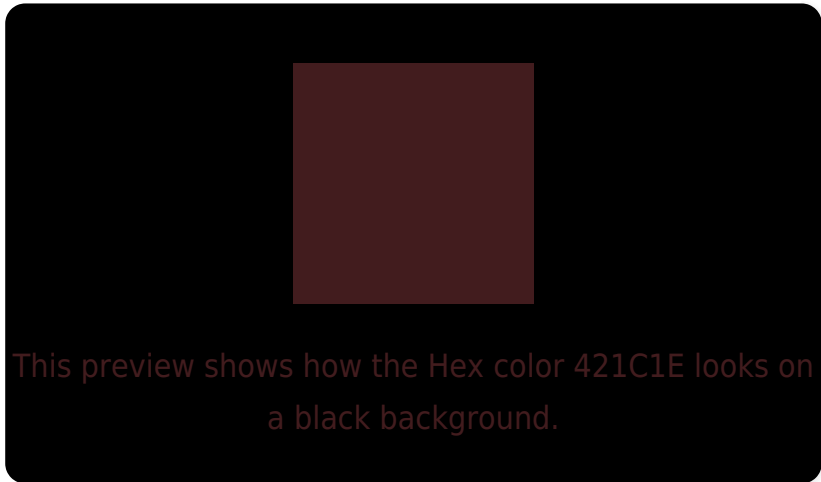
Large Text (above 18pt) WCAG AA ✓ Pass

Any Text WCAG AA ✓ Pass

Large Text (above 18pt) WCAG AAA ✓ Pass

Any Text WCAG AAA ✓ Pass

Black Background



Color Contrast Check

Large Text (above 18pt) WCAG AA × Fail

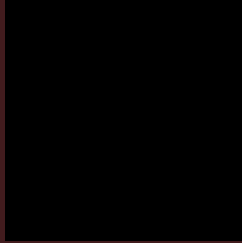
Any Text WCAG AA × Fail

Large Text (above 18pt) WCAG AAA × Fail

Any Text WCAG AAA × Fail

If you want to check with other color combinations, try the [Color Contrast Checker](#).

Hex 421C1E Background



This preview shows how black text looks on a background with the Hex color 421C1E.



This preview shows how white text looks on a background with the Hex color 421C1E.

Color Blindness Simulation

Color vision deficiency is a very complex topic, and I could not describe the different causes any better than Wikipedia does, so if you want to learn more, you should check out their [article about color blindness](#).

Dichromacy



Original Color
421C1E

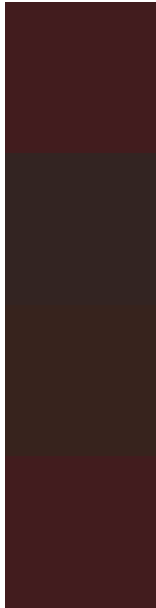
Protanopia
2A2824

Deuteranopia
30271C



Tritanopia
421C1E

Trichromacy



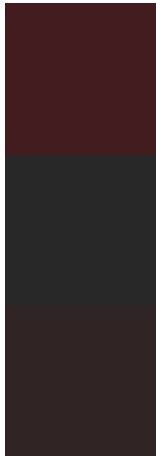
Original Color
421C1E

Protanomaly
332422

Deuteranomaly
37231D

Tritanomaly
421C1E

Monochromacy



Original Color
421C1E

Achromatopsia
282828

Achromatomaly
312424

CSS Examples

Text

The CSS property to change the color of the text to Hex 421C1E is called "color". The color property can be set on classes, ids or directly on the HTML element.

This example shows how text in the color #421C1E looks like.

```
.text, #text, p{  
    color:#421C1E  
}
```

If you want to add a text shadow in that color use the text-shadow property, you can generate a text shadow directly with our [CSS Text Shadow Generator](#).

Here you see how black text with a 4 pixel #421C1E colored shadow looks like.

```
.shadow{ text-shadow: 4px 4px 2px #421C1E
}
```

Border

The CSS property to change the border of an element to Hex 421C1E is called "border". The border property can be set on classes, ids or directly on the HTML element.

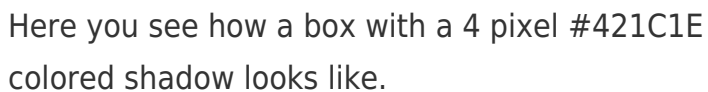
This example shows the color as border, it can be applied via the CSS property "border" or "border-color".

```
.border, #border, table{ border:4px solid
#421C1E }
```

If only the border color should be changed use the property `border-color`.

```
.border{ border-color:#421C1E }
```

If you want to add a box shadow in that color use:



Here you see how a box with a 4 pixel #421C1E colored shadow looks like.

```
.boxshadow{ -moz-box-shadow:4px 4px 4px  
4px #421C1E; -webkit-box-shadow:4px 4px  
4px 4px #421C1E; box-shadow:4px 4px 4px  
4px #421C1E }
```

Background

The CSS property to change the background color of an element to Hex 421C1E is called "background". The background property can be set on classes, ids or directly on the HTML element.

```
.background, #background, body{  
background:#421C1E }
```

If only the background color should be changed can be used:

```
.background{ background-color:#421C1E }
```

This example shows the color as background, it is applied via the CSS property "background".

To optimize and compress your CSS code, you can use our [online CSS compressor and optimizer](#) based on csstidy. If you want to create a linear or radial gradient as background or border, check our [CSS Gradient Generator](#).

Hey! You found this booklet interesting? Support Converting Colors with the new Membership Option!

The pro membership hides all ads, plus gives you double the colors in the color bucket, and more awesome pro features!

[Learn more, Memberships starting at \\$2.50/m!](#)

**Follow me
on Twitter!**

@ConvertingColor